

DETAILED DESIGN (Construction Documentation)

Time

Four weeks

You will prepare a set of Detailed Design drawings that will be submitted as a single sided A3 package of documentation.

Outputs

Comprehensive construction documentation including but not limited to:

- Landscape works plan
- Grading/levels plan
- Soft landscape plan and plant schedule
- Sections
- Construction details


JUST TO CLARIFY.....

WHY DETAILED DESIGN

WHY TENDER DOCUMENTATION

WHY CONSTRUCTION DOCUMENTATION?

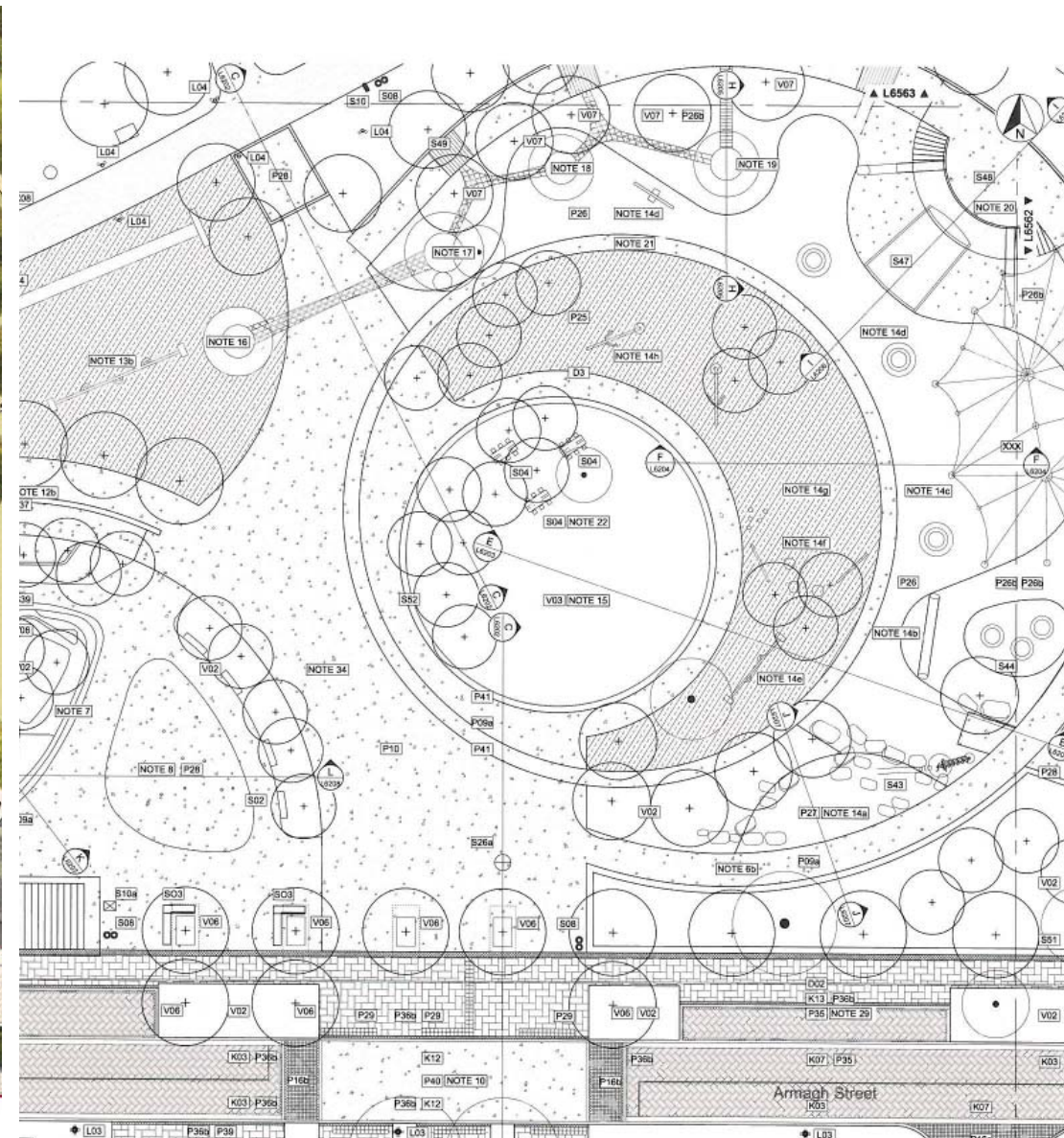
T E N D E R
NOT FOR CONSTRUCTION

TITLE LANDSCAPE WORKS HARDSCAPE FINISHES	DATE	12/8/02	SCALE	
	DRAWN	SK	D1 A1	1:200
	CHECKED	MW	JOB No.	0082
	DRAWING No.	0082-LA-01	REV	A 

WE ARE TAKING A LEAP FROM CONCEPT TO CONSTRUCTION



WHAT ARE THE MAIN DIFFERENCES....?



SETTING UP YOUR DRAWING SHEET

(TYPICALLY ALL DRAWING SHEETS ARE LANDSCAPE ORIENTATION AND PRODUCED AT A1 AND CAN BE SCALED AND READ AT A3)

INFORMATION IN TITLEBLOCK GOES HERE



Notes

- 1 Contractors to verify all dimensions on site prior to commencing work.
- 2 Contractors are responsible for confirming the location of all underground services on site prior to commencing work.
- 3 Figured dimensions to be taken in preference to scaled dimensions.

31.03.08 FOR TENDER

Revision

Issued for:

TENDER

Design	YT	SCALE
Drawn	SK	1:150 @ A1
Check	YT	1:300 @ A3
Apprv'd	JP	Copyright © Boffa Miskell Limited 2008

Prepared for

KRISTIN SCHOOL



Boffa Miskell Limited
Level 3, IBM Centre B2 Wyndham Street
PO Box 91 250, Auckland, New Zealand
Tel: 64-9-359-2526 Fax: 64-9-359-5300
www.boffamiskell.co.nz

**24 CLASSROOM
BLOCK
STAGE 2
PROPOSED LANDSCAPE WORKS**

DRAWING NO.
A06270-001

REVISION
1

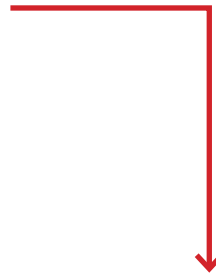




SETTING UP YOUR DRAWING SHEET

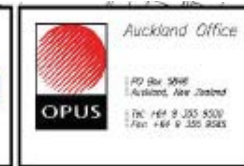
(TYPICALLY ALL DRAWING SHEETS ARE LANDSCAPE ORIENTATION AND PRODUCED AT A1 AND CAN BE SCALED AND READ AT A3)

OR HERE



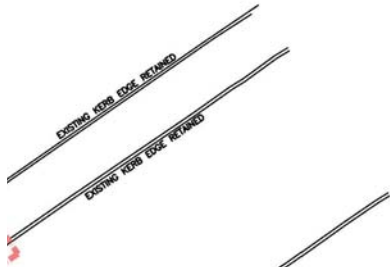
NO	DESCRIPTION	DATE	BY	CHECKED	DATE
08	IF-REVISED FOR CONSTRUCTION	15.05.13	DESIGN TP	SK	10/08/11
07	FOR CONSENT - REDUCTION OF MIN. TREE HEIGHTS AT PLAYING	21.02.13	DRAWN SK	TP	10/08/11
06	FOR CONSENT	05.02.13	REVISED T. OREN		14/09/11
05	REVISION OF TREE HEIGHT		APPROVED K. E. KUSKEY		19/12/11

This drawing and its contents are the property of Oates International Consultants Limited. Any unauthorised employment or reproduction, in full or in part, is forbidden.



TITLE: AUCKLAND MANUKAU EASTERN TRANSPORT INITIATIVE AMETI PACKAGE 01: PANMURE - PHASE 1 MAIN ALIGNMENT			
LANDSCAPE WORKS INDEX SHEET AND OVERALL PLAN			
SHEET: FOR CONSTRUCTION	FILE: 1-C0362.02		
SCALE: 1:2500(A1) 1:5000(A3)	PLAT DATE: 15 MAY 2013	DATE: 1/11/20	7104 700 RB

INFORMATION REQUIRED TO SET UP YOUR TITLEBLOCK



- 31.03.08 FOR TENDER

Revision

Issued for:

TENDER

Design	YT	SCALE
Drawn	SK	1:150 @ A1
Check	YT	1:300 @ A3
Appv'd	JP	Copyright © Boffa Miskell Limited 2008

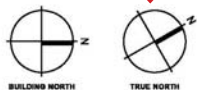
Prepared for

KRISTIN SCHOOL



Boffa Miskell Limited
Level 3, IBM Centre 82 Wyndham Street
PO Box 91 250, Auckland, New Zealand
Tel: 64-9-358-2526 Fax: 64-9-359-5300
www.boffamiskell.co.nz

**24 CLASSROOM
BLOCK
STAGE 2**
PROPOSED LANDSCAPE WORKS



DRAWING NO. REVISION

A06270-001



WHAT 'ISSUE' IS THIS
(FOR YOU 'FOR CONSTRUCTION')

SCALE OF DRAWING AT A1 AND A3

CLIENT (M. BRADBURY)

LOGO OF COMPANY PRODUCING DRAWINGS
(UNITEC LOGO)

PHYSICAL ADDRESS AND CONTACT NUMBER
(UNITEC)

NAME OF PROJECT AND THEN
NAME OF DRAWING

NORTH POINT REQUIRED FOR ALL PLANS

REVISION STATUS (-, A, B, C

DRAWING NUMBER IN SET OF DRAWINGS

CODE UNIQUE TO PARTICULAR OFFICE (NOT RQRD)

DRAWING ORDER.....TYPICALLY

01 DRAWING REGISTER

02 DEMOLITION PLAN (NOT REQUIRED FOR THIS ASSIGNMENT)

03 HARD LANDSCAPE PLAN

04 LEVELS PLAN

05 SETOUT PLAN



THESE TWO ARE SOMETIMES COMBINED IF THERE IS
NOT TOO MUCH INFORMATION TO CONVEY

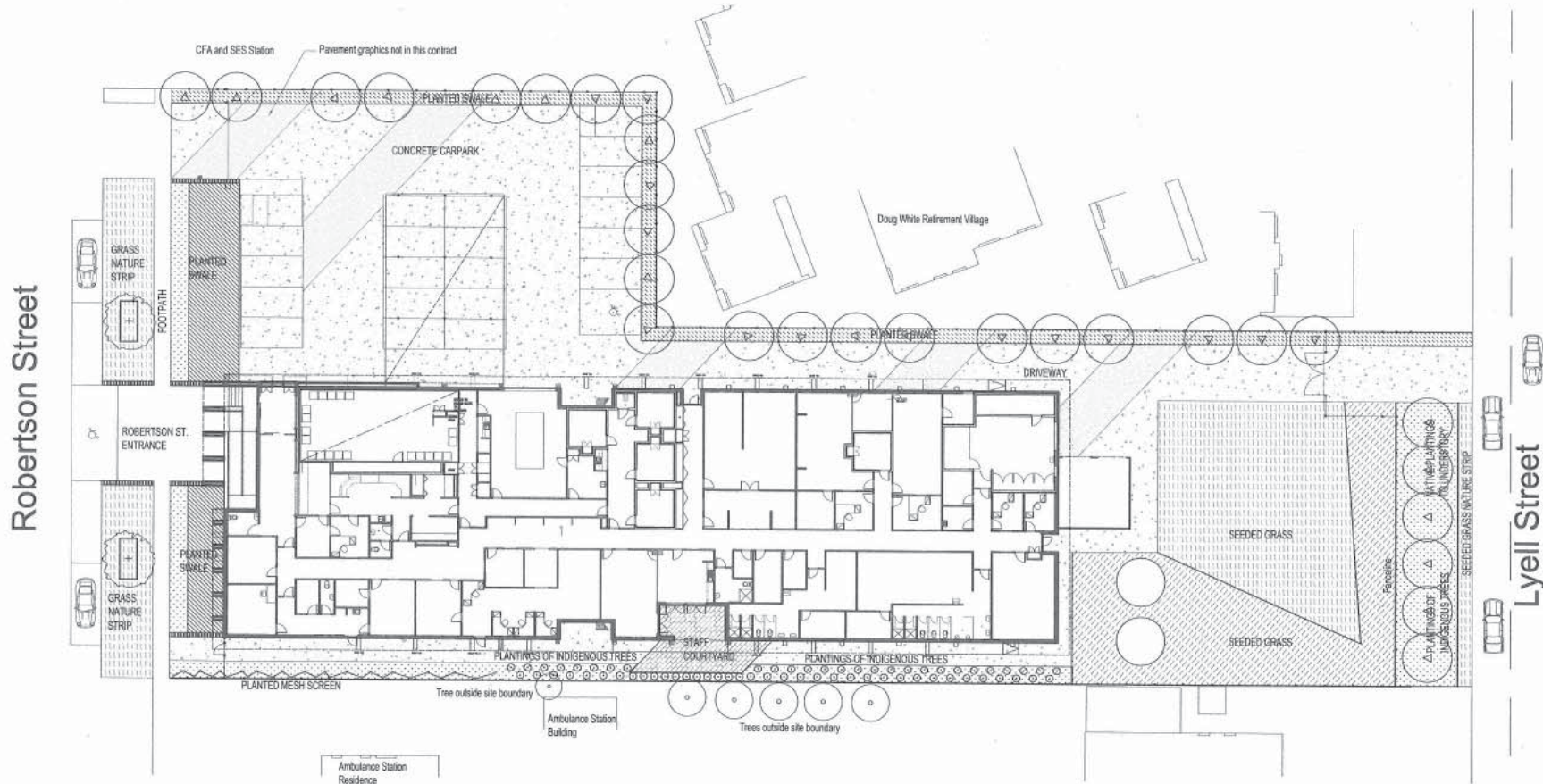
06 SOFT LANDSCAPE PLAN

07 DETAILS

08 DETAILS

09 DETAILS

LANDSCAPE WORKS



GISBORNE POLICE STATION DRAWING REGISTER

- 0082-LA-00 Landscape Works Drawing Register
- 0082-LA-01 Landscape Works Hardscape Finishes
- 0082-LA-02 Landscape Works Softscape Setout
- 0082-LA-03 Landscape Works Hardscape Details
- 0082-LA-04 Landscape Works Softscape Details

AND IT CAN
ALSO MEAN THIS....
ITS BASICALLY A TABLE OF
CONTENTS FOR YOUR DRAWING
SET

TENDER
NOT FOR CONSTRUCTION

REV	DESCRIPTION	BY	DATE
A	For Tender	SK	12/8/02
+	Preliminary	SK	7/6/02

© COPYRIGHT
This drawing and design remains the property of SKMdesign ASSOCIATES and may not be copied in any way without prior written approval from SKM.

IMPORTANT NOTE
THIS DRAWING MUST BE READ IN CONJUNCTION WITH THE OTHER CONTRACT DOCUMENTS AND ANY INSTRUCTIONS ISSUED DURING THE COURSE OF THE CONTRACT. IT IS THE RESPONSIBILITY OF CONTRACTORS TO VERIFY THE LOCATION OF ALL UNDERGROUND SERVICES PRIOR TO COMMENCING ANY EXCAVATIONS.



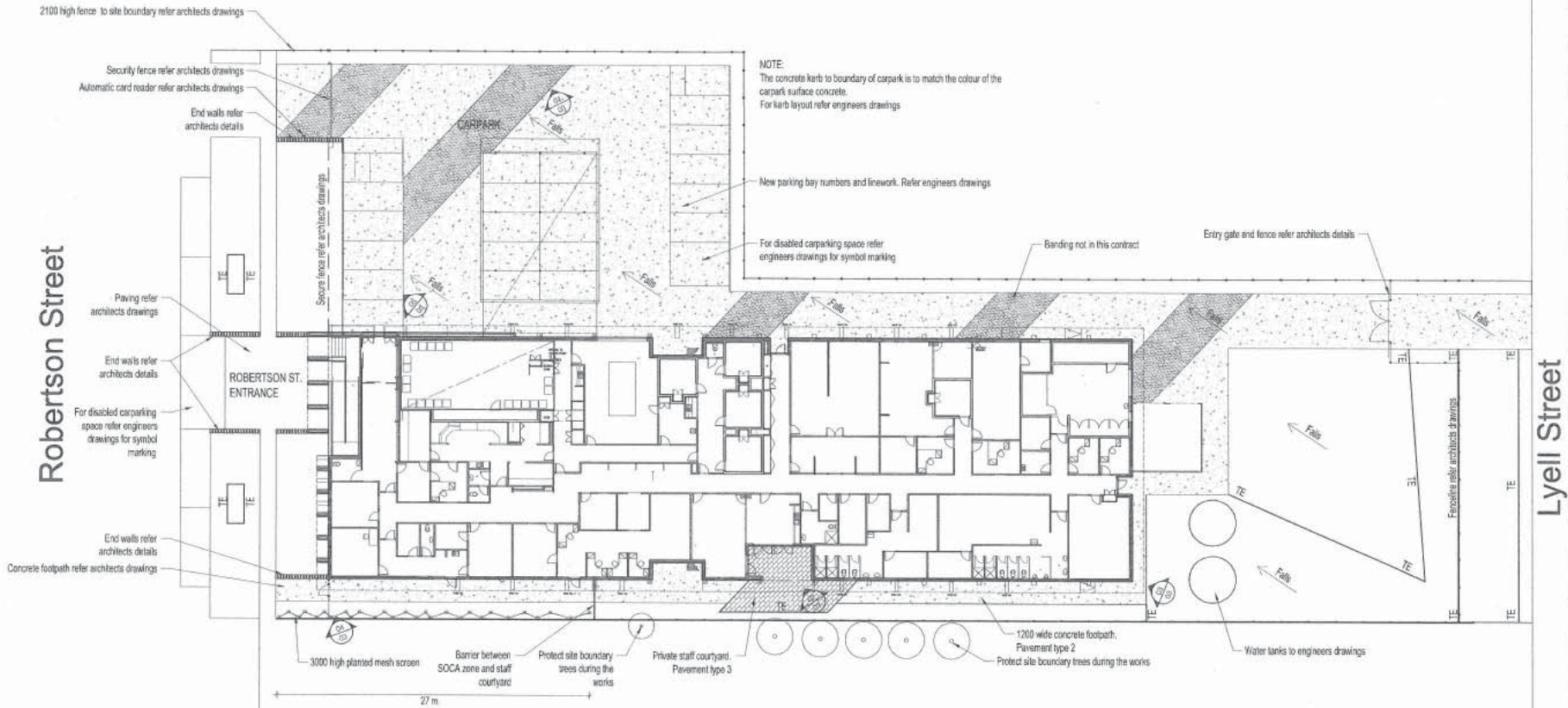
SKMdesign
580 GIBSON ROAD
TELEPHONE: 0248 3100
ARMADALE 3143
FACSIMILE: 0248 3006

PROJECT
GISBORNE POLICE STATION

TITLE
LANDSCAPE WORKS
DRAWING REGISTER

DATE	SCALE
12/8/02	1:200
DRAWN SK	IN A1
CHECKED MW	JOB No. 0082
DRAWING No. 0082-LA-00	REV A

HARD LANDSCAPE PLAN



MATERIALS SCHEDULE	
Pavement type 1: Hypercrete with concrete, colour blue. Refer specification	Pavement type 5: 14mm diameter crushed gravel, refer specification
Pavement type 2: Concrete. For colour refer specification. For construction refer engineers drawings.	Entry wall refer architects drawings
Pavement type 3: 600x300x40 Cast in Stone pavers, refer specification.	3000 height 32mm diamond pitch galvanised cyclone mesh screen, refer specification
Pavement type 4: Broom finish concrete, refer specification	Parking bay numbers and line work. Concrete applied road finish as specified
Timber edge, refer specification	

TENDER
NOT FOR CONSTRUCTION

REV	DESCRIPTION	BY	DATE
A	For Tender	SK	12/8/02
-	Preliminary	SK	7/6/02

© COPYRIGHT
This drawing and design remains the property of SKMdesign and associated entities and may not be copied or reproduced without prior written approval from SKMdesign.

IMPORTANT NOTE
THIS DRAWING IS TO BE READ IN CONJUNCTION WITH THE DESIGN CONTRACT DOCUMENTS AND ANY INSTRUCTIONS ISSUED DURING THE COURSE OF THE CONTRACT.
IT IS THE RESPONSIBILITY OF THE CONTRACTOR TO VERIFY THE LOCATION OF ALL UNDERGROUND SERVICES PRIOR TO COMMENCING ANY EXCAVATIONS.

ALL DIMENSIONS ARE IN MILLIMETERS. DO NOT SCALE DRAWINGS.
VERIFY ALL DIMENSIONS AND LEVELS ON SITE BEFORE COMMENCING ANY WORK.
NOTIFY SKMdesign IMMEDIATELY OF ANY DISCREPANCIES AND/OR OMISSIONS.



SKMdesign
980 ORCHARD ROAD
TELEPHONE 5248 3100
ARMADALE 3643
TASGMAIL 9508 8066

PROJECT: GIBBORNE POLICE STATION

TITLE: LANDSCAPE WORKS
HARDSCAPE FINISHES

DATE	12/8/02	SCALE	1:200
DRAWN	SK	BY	SK
CHECKED	NRW	JOB NO.	0082
DRAWING NO.	0082-LA-01	REV	A

HARD LANDSCAPE PLAN

ENSURE THAT WHAT YOU DRAFT IS WHAT YOU WOULD SEE IE:

IF PAVERS ARE 400X600MM DRAFT THEM THAT SIZE

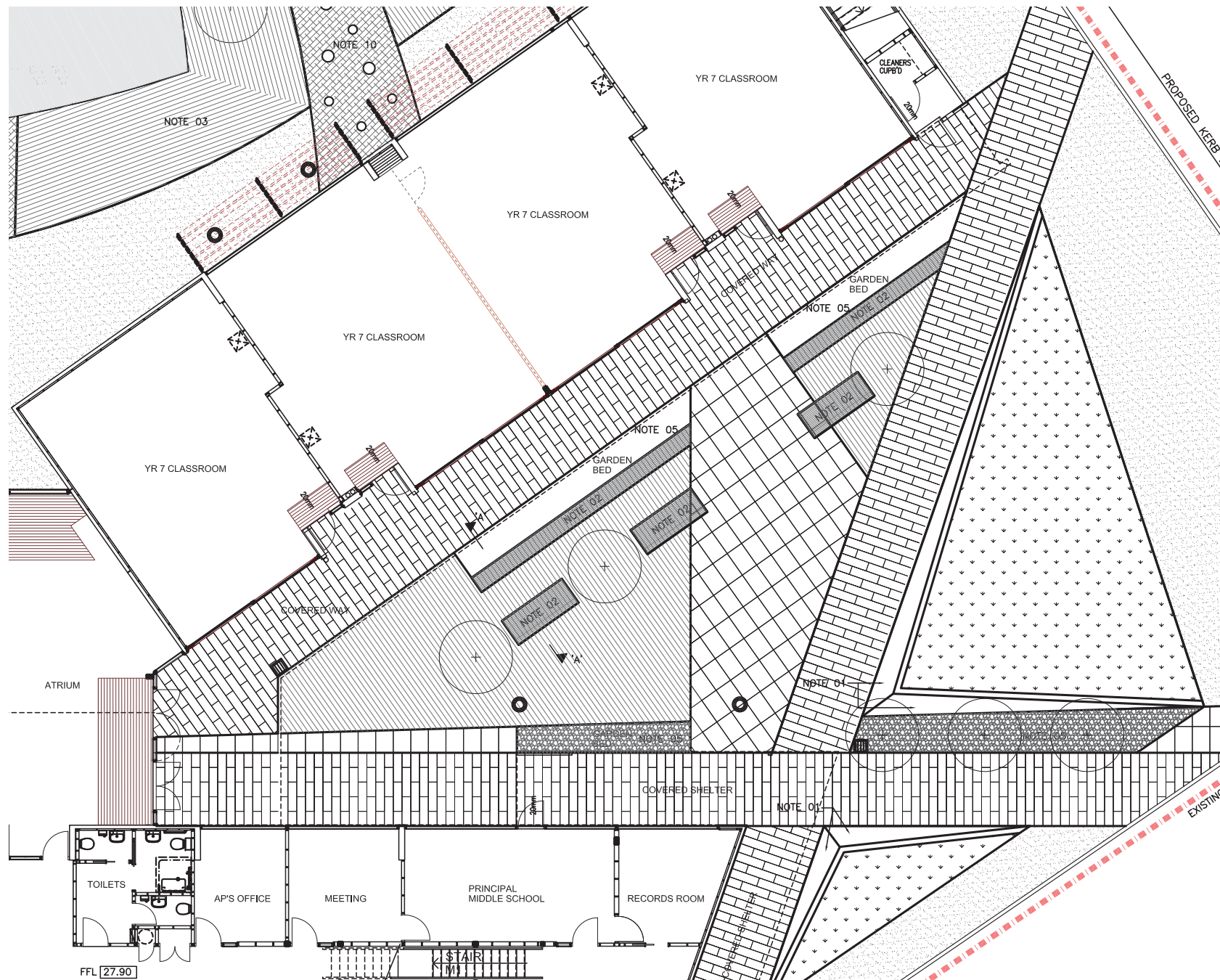
IF TIMBER IS 150MM WIDE DRAFT IT THAT WIDTH

DRAFT THE WIDTH OF THE WALL

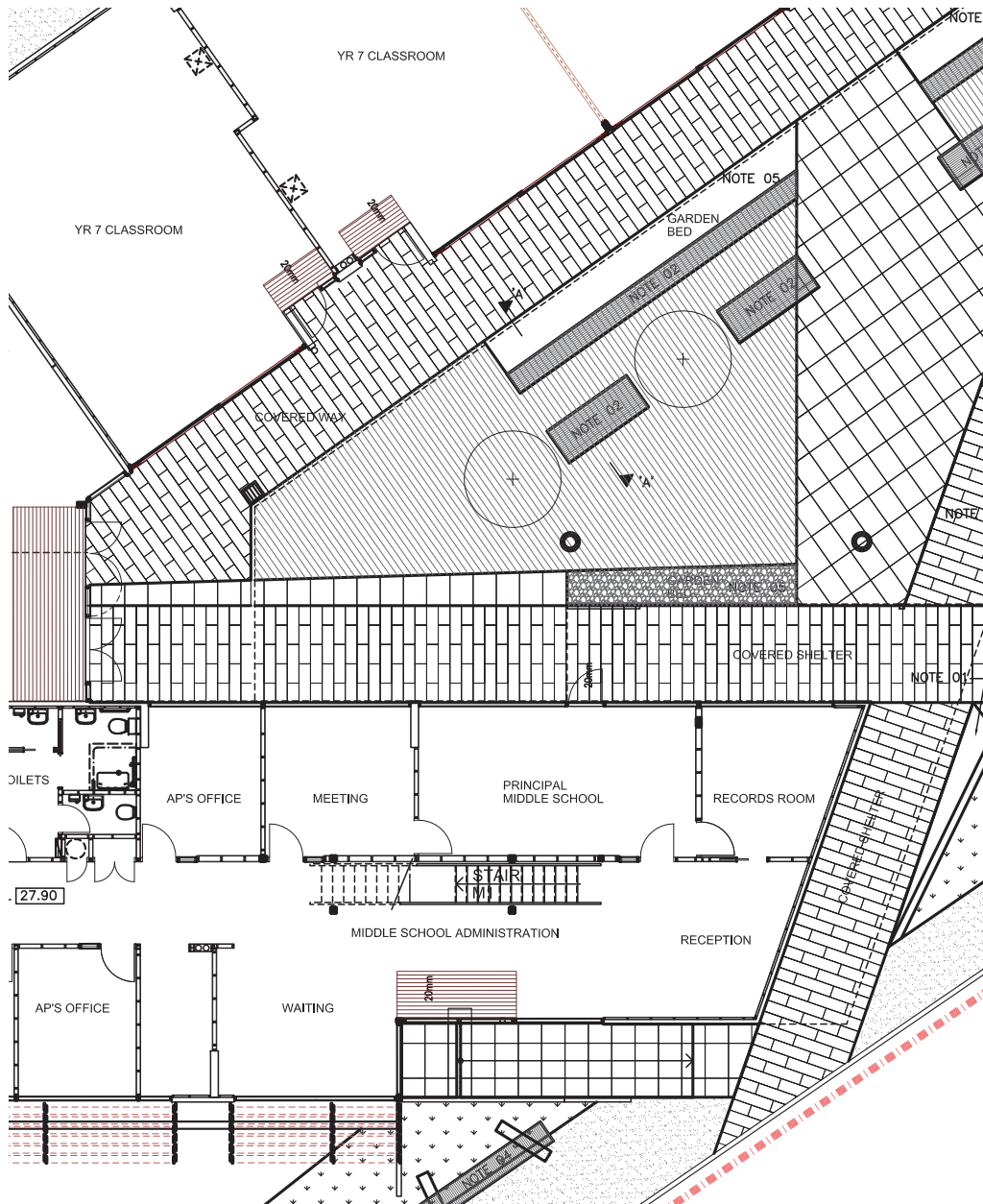
DRAFT THE WIDTH OF A KERB

BUILDING LINES ARE ALWAYS A THICKER LINE








LINES BETWEEN MATERIAL CHANGES ARE TYPICALLY A THICKER LINE



HARD LANDSCAPE PLAN



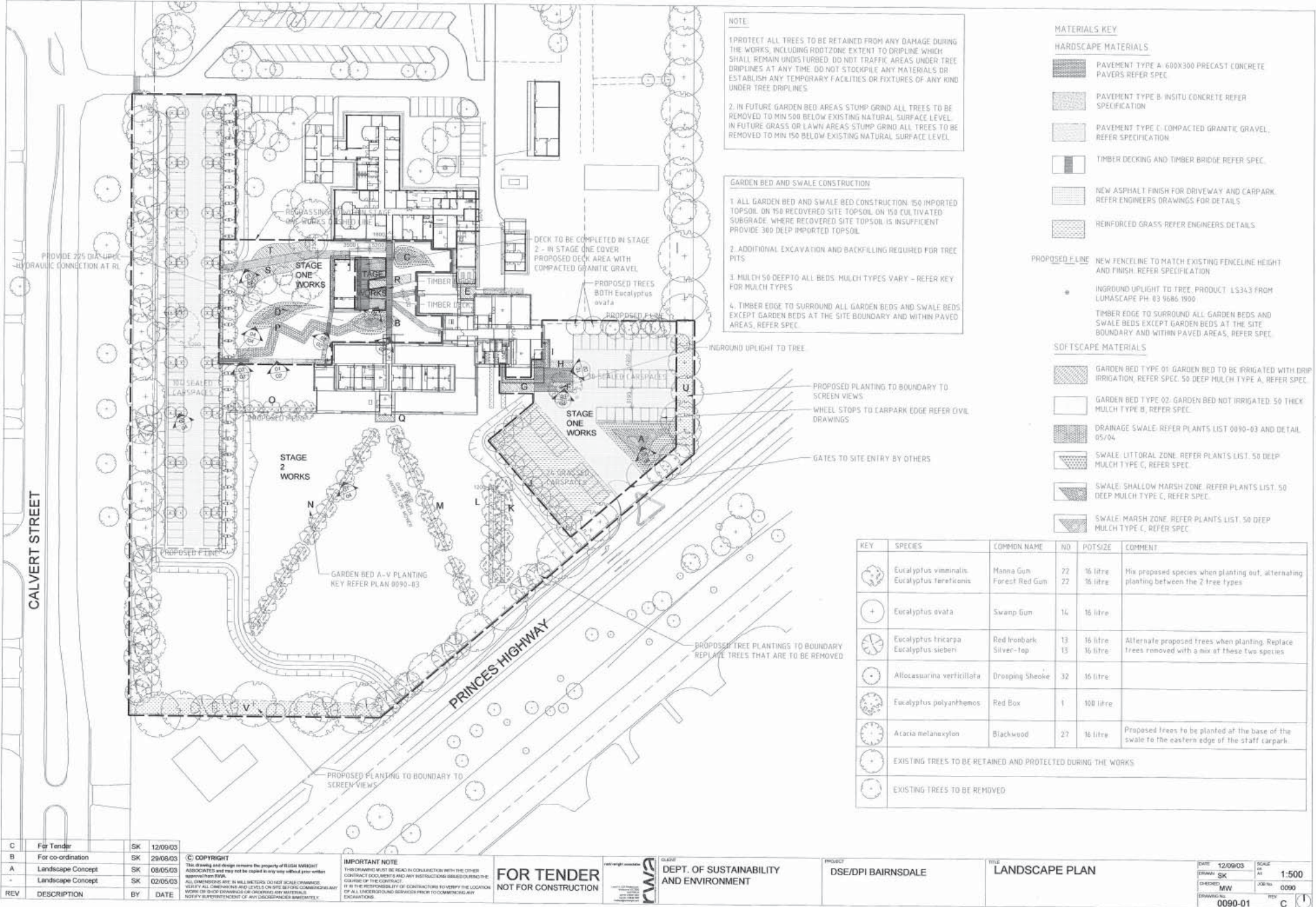
KEY

-  HORIZON INTERNATIONAL PAVERS. REFER SUPPLIERS LIST THIS SHEET. REFER DRAWING A06270-004 DETAIL 6 AND 7.
-  TIMBER DECK. REFER DRAWING A06270-005.
-  BASALT 'MULCH', TO BE SPREAD OVER GARDEN BED TO 100MM THICKNESS. REFER SPECIFICATION.
-  600x900x40mm ASIAN BASALT, COMBED FINISHED (CODE G3027). REFER SUPPLIERS LIST THIS SHEET. REFER DETAIL 11 AND 12 ON DRAWING A06270-004.
-  EXPOSED HAWKES BAY PEBBLE CONCRETE TO MATCH STAGE 1. REFER TYPICAL DETAIL ON DRAWING A06270-004 DETAIL 01.
-  ACID ETCHED CONCRETE TO MATCH STAGE 1. REFER TYPICAL DETAIL ON DRAWING A06270-004 DETAIL 01.
-  FEATURE CONCRETE. REFER TYPICAL DETAIL ON DRAWING A06270-004 DETAIL 01.

ENSURE THAT YOUR 'KEY' HAS EXACTLY THE SAME SYMBOL AS SHOWN ON THE DRAWING IE:

- SAME PEN WEIGHT
- SAME ORIENTATION
- SAME SIZE

LANDSCAPE WORKS PLAN (A MIX OF HARD AND SOFT LS)



C	For Tender	SK	12/09/03
B	For co-ordination	SK	29/08/03
A	Landscape Concept	SK	08/05/03
-	Landscape Concept	SK	02/05/03
REV	DESCRIPTION	BY	DATE

© COPYRIGHT
This drawing and design remain the property of BUSH MORTGAGE ASSOCIATED and may not be copied or used in any way without prior written approval from BMA.

IMPORTANT NOTE
THIS DRAWING MUST BE READ IN CONJUNCTION WITH THE OTHER CONTRACT DOCUMENTS AND ANY INSTRUCTIONS ISSUED DURING THE COURSE OF THE CONTRACT.
IT IS THE RESPONSIBILITY OF CONTRACTORS TO VERIFY THE LOCATION OF ALL UNDERGROUND SERVICES PRIOR TO COMMENCING ANY EXCAVATIONS.

FOR TENDER
NOT FOR CONSTRUCTION



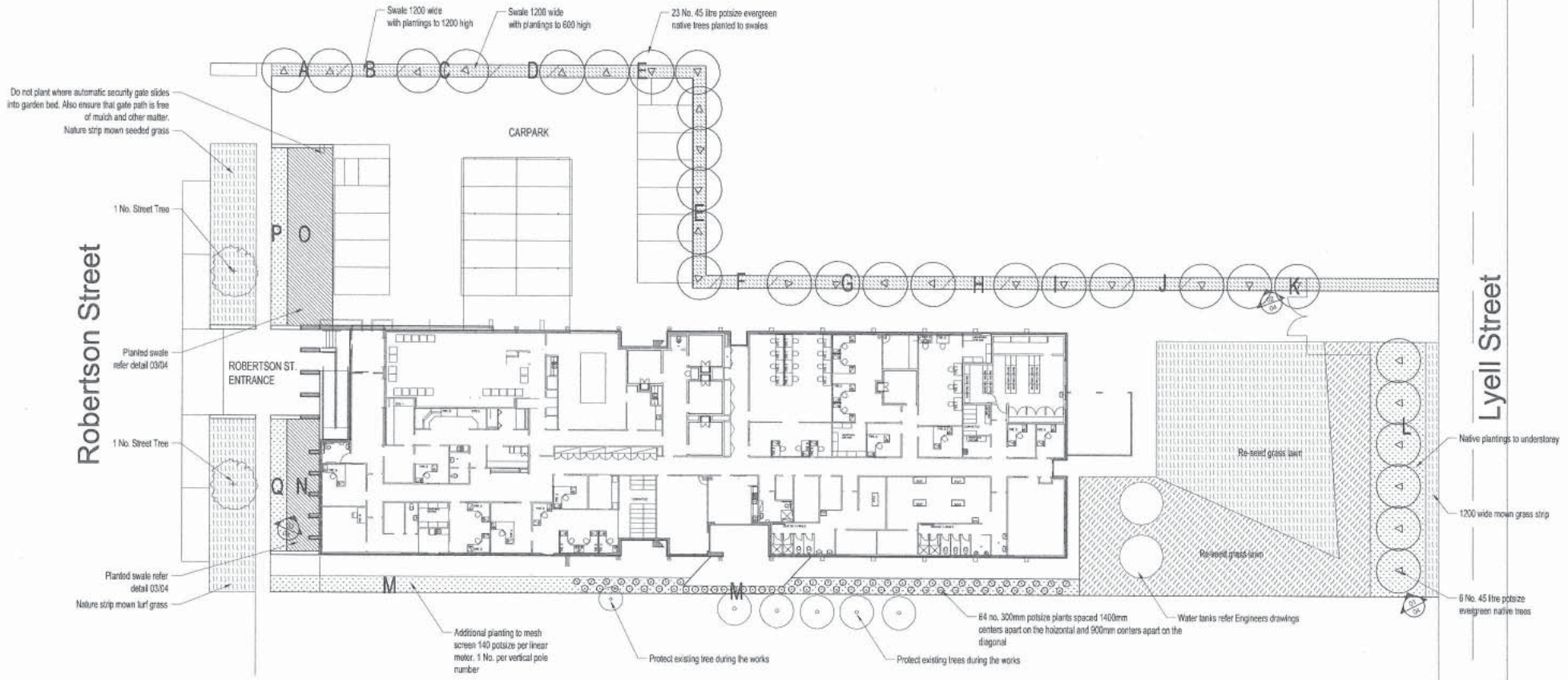
DEPT. OF SUSTAINABILITY AND ENVIRONMENT

PROJECT: DSE/DPI BAIRNSDALE

TITLE: LANDSCAPE PLAN

DATE	12/09/03	SCALE	AS SH	1:500
DRAWN	SK			
CHECKED	MW	JOB NO.	0090	
DRAWING NO.	0090-01	REV	C	

SOFT LANDSCAPE PLAN



MATERIALS SCHEDULE

- Swale bed construction A-K:
Swale - 150mm thick imported topsoil on 150 thick recovered site topsoil.
- Garden bed construction L, M, N, P, Q:
150 thick imported topsoil on 150 recovered site topsoil with mulch type 'B' (refer spec).
- Swale bed construction N, C:
150 thick imported topsoil on 150 recovered site topsoil with mulch type 'A' (refer spec).
- Seeded grass as specified mown to 100mm
- Seeded grass as specified mown to 40mm

- Existing trees at the site boundary. Protect during the works. Refer specification
- 29 No. native evergreen trees. For tree planting refer specification
- New street trees: Quercus canariensis min 90mm caliper D6H min 4.0m height field grown. For tree planting refer specification

GARDEN BED	POTSIZE	NO. PER SQ.M	NO.
A	Tube stock	6	48
B	Tube stock	6	48
C	Tube stock	6	60
D	Tube stock	6	56
E	Tube stock	6	262
F	Tube stock	6	39
G	Tube stock	6	114
H	Tube stock	6	42
I	Tube stock	6	78
J	Tube stock	6	42
K	Tube stock	6	108
L	Tube stock	6	720
M	Tube stock	4	412
N	Tube stock	6	234
O	Tube stock	6	432
P	Tube stock	6	150
Q	Tube stock	6	108

TENDER
NOT FOR CONSTRUCTION

REV	DESCRIPTION	BY	DATE
A	For Tender	SK	12/8/02
-	Preliminary	SK	7/6/02

© COPYRIGHT
This drawing and design remains the property of WASH WREATH ASSOCIATES and may not be copied in any way without prior written approval from WWA.

IMPORTANT NOTE
THIS DRAWING MUST BE READ IN CONJUNCTION WITH THE OTHER CONTRACT DOCUMENTS AND ANY INSTRUCTIONS ISSUED DURING THE COURSE OF THE CONTRACT. IT IS THE RESPONSIBILITY OF CONTRACTORS TO VERIFY THE LOCATION OF ALL UNDERGROUND SERVICES PRIOR TO COMMENCING ANY EXCAVATIONS.

WWA
WASH WREATH ASSOCIATES
100 OPHIDIAN ROAD
TELEPHONE 5048 3100

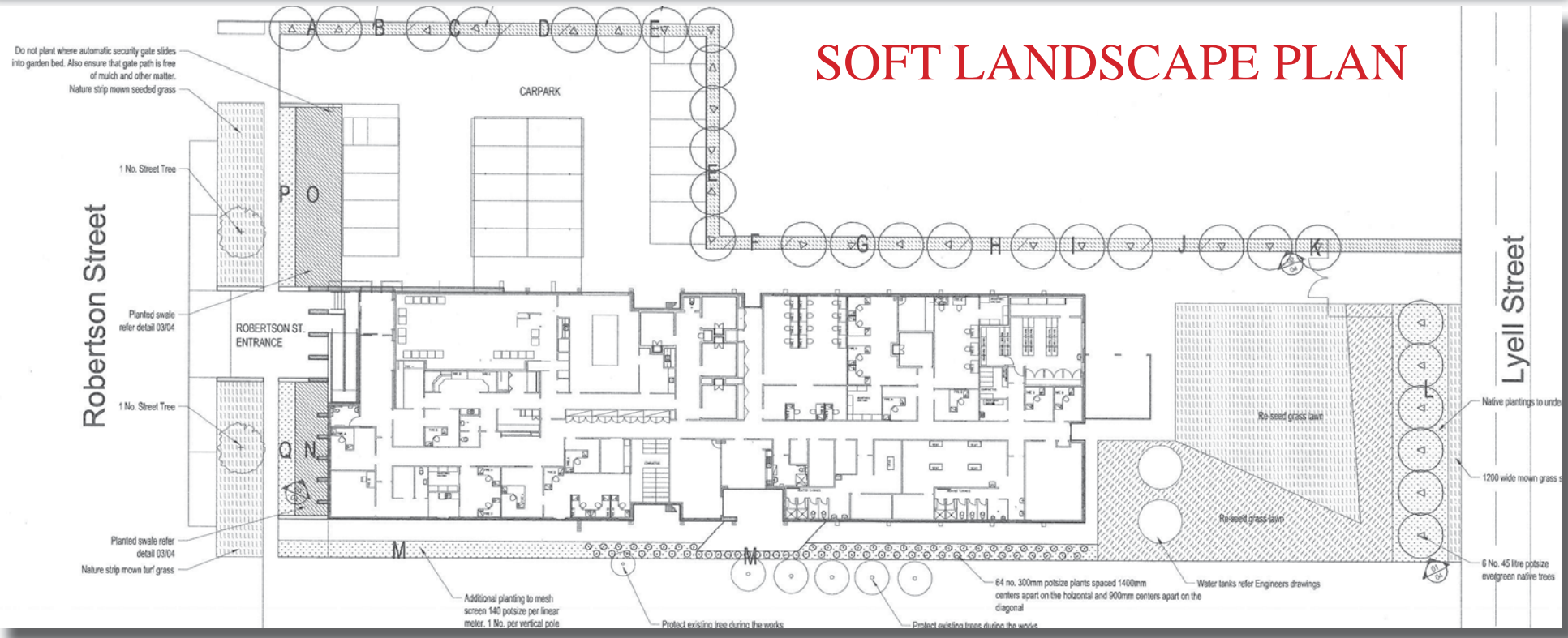
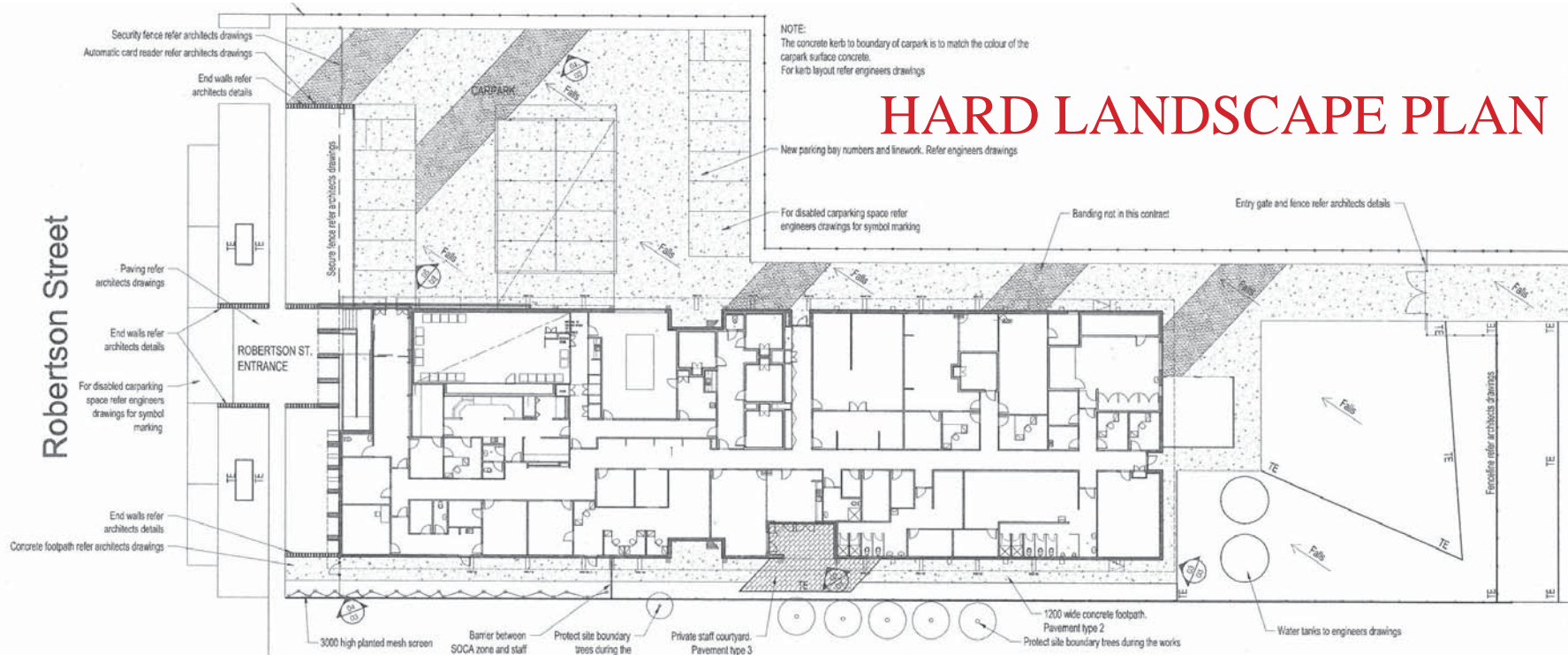
skm design
100 OPHIDIAN ROAD
TELEPHONE 5048 3100
FACSIMILE 5048 3252

PROJECT: GIBBORNE POLICE STATION

TITLE: LANDSCAPE WORKS
SOFTSCAPE SETOUT

DATE: 12/8/02
DRAWN: SK
CHECKED: MW
DESIGNED: MW
SCALE: A1
1:200
JOB NO: 0082
REV: A

0082-LA-02

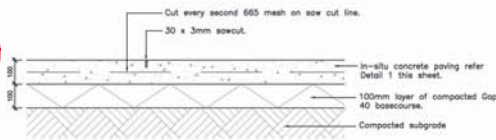


REFERENCING DETAILS FROM A PLAN

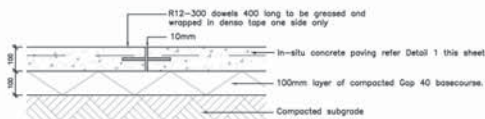
DETAIL KEY

DETAIL #
SHEET #

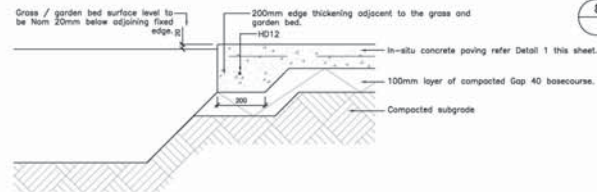
1 TYPICAL DETAIL CONCRETE PAVING
Scale 1:10 @ A1



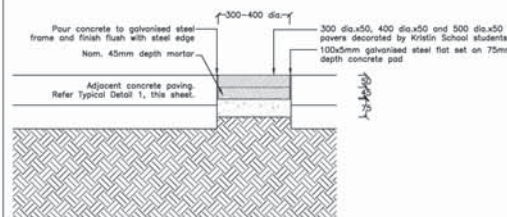
2 TYPICAL EXPANSION JOINT
Scale 1:10 @ A1



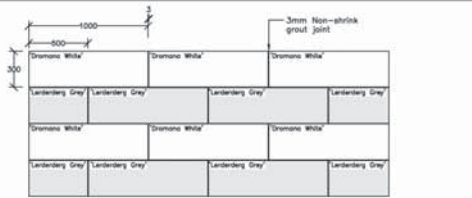
3 TYPICAL CONSTRUCTION JOINT
Scale 1:10 @ A1



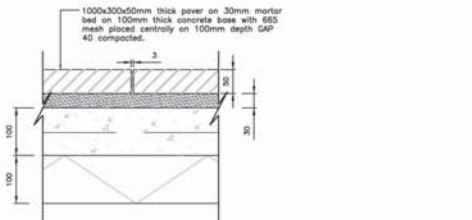
4 CONCRETE TO GARDENBED OR GRASS MOUND
Scale 1:10 @ A1



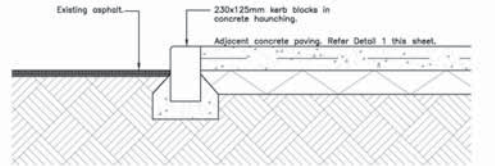
5 STEEL FRAME FOR STUDENT 'ART' PAVERS
Scale 1:10 @ A1



6 HORIZON PAVER SETOUT AND PAVING PATTERN
Scale 1:20 @ A1



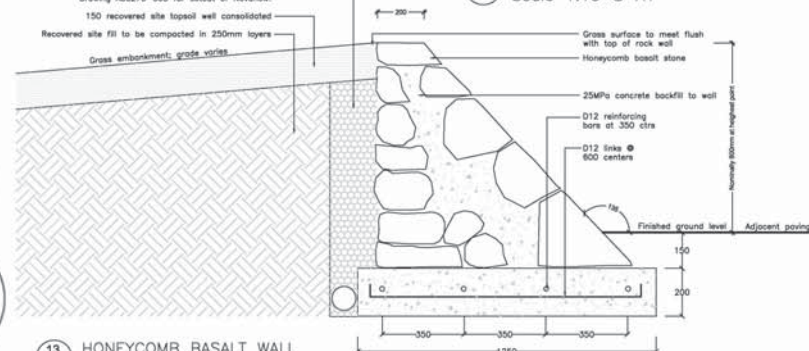
7 HORIZON PAVER LAYING DETAIL
Scale 1:5 @ A1



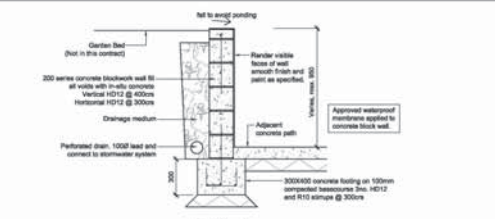
8 CONCRETE KERB
Scale 1:10 @ A1

NOTE:
1. Wall to be constructed by Auckland Stone Masons. Contact Len Lewis on 021 921 344 or 09 830 8908.
2. Refer Water Dynamics irrigation plan prior to commencing construction of the wall.

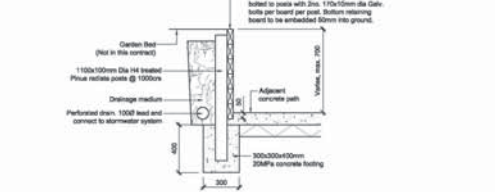
12 BASALT STONE PAVING AND CONCRETE PAVING INTERFACE
Scale 1:10 @ A1



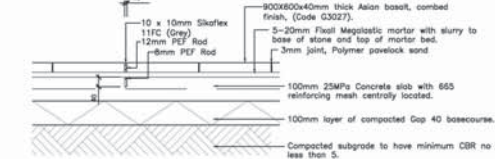
13 HONEYCOMB BASALT WALL
Scale 1:10 @ A1



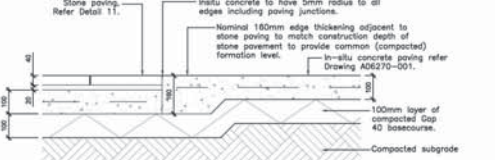
9 MASONRY BLOCK RETAINING WALL AT GARDEN BED
Scale 1:20 @ A1



10 TIMBER RETAINING WALL AT GARDEN BED
Scale 1:20 @ A1



11 BASALT STONE PAVING AND CONTRACTION JOINT
Scale 1:10 @ A1



12 BASALT STONE PAVING AND CONCRETE PAVING INTERFACE
Scale 1:10 @ A1

Notes

- Contractors to verify all dimensions on site prior to commencing work.
- Contractors are responsible for confirming the location of all underground services on site prior to commencing work.
- Figured dimensions to be taken in preference to scaled dimensions.

Concrete Note

GENERAL CONCRETE
All concrete to be 20MPa unless otherwise specified.
All cuts to be diamond saw cuts to accurate fit.
All reinforcing to have minimum 35mm cover.
Concrete mix to be supplied by Stevensons and the qualities of the finishes to match the approved samples. Stevensons Ltd, Contact Ann Jones 09-921-8471.
Samples of all concrete mix and finishes to be supplied in advance to construction to allow sufficient time for testing and approvals and resampling where required. Dense distribution of aggregate to approved samples.

CONCRETE FOOTPATH
All areas of concrete footpath to have typical CR cross fall to garden bed edge unless otherwise noted. Contractor to seek direction of the Engineer when footpath cross fall grades exceed 3% or a less than 1%.
Refer Hard Landscape setout plans for the level and cross fall details.
Location of sawcuts are to be approved by Engineer prior to sawcutting. All saw cuts to take place within 24hours of pour.

31.03.08 FOR TENDER
Rev DATE DESCRIPTION

Revision

Issued for:
TENDER

Design YTP/JP SCALE as shown
Drawn SK
Check YP
Approved JP
Copyright © Boffa Miskell Limited 2008

Prepared for:
Kristin School



Boffa Miskell Limited
Level 3, 88M Centre 82 Wyndham Street
PO Box 91 260, Auckland, New Zealand
Tel: 64-9-359-2526 Fax: 64-9-359-5300
www.boffamiskell.co.nz

Kristin School
24 Classroom Block Stage 2
Hard Landscape Works
Detail Sheet 1

DRAWING NO. A06270-004
REVISION

SO WHERE TO FROM HERE.....

- HOW LARGE IS MY SITE? WHERE IS MY EXTENT OF WORKS?
- **DO I NEED A DRAWING REGISTER THAT REFERS TO THE LARGER SITE WITH A SERIES OF PLANS?**
- AM I ADJUSTING LEVELS ON SITE? (WE WILL DISCUSS THIS IN ANOTHER CLASS)
- **WHAT MATERIALS AM I USING ON SITE? HOW DO THESE MATERIALS MEET ONE ANOTHER?**
- WHAT PLANTS AND TREES AM I USING IN MY DESIGN, AND HOW WILL I REPRESENT THESE?
- **WHAT DETAILS WOULD BE MOST RELEVANT TO DRAFT UP?**