

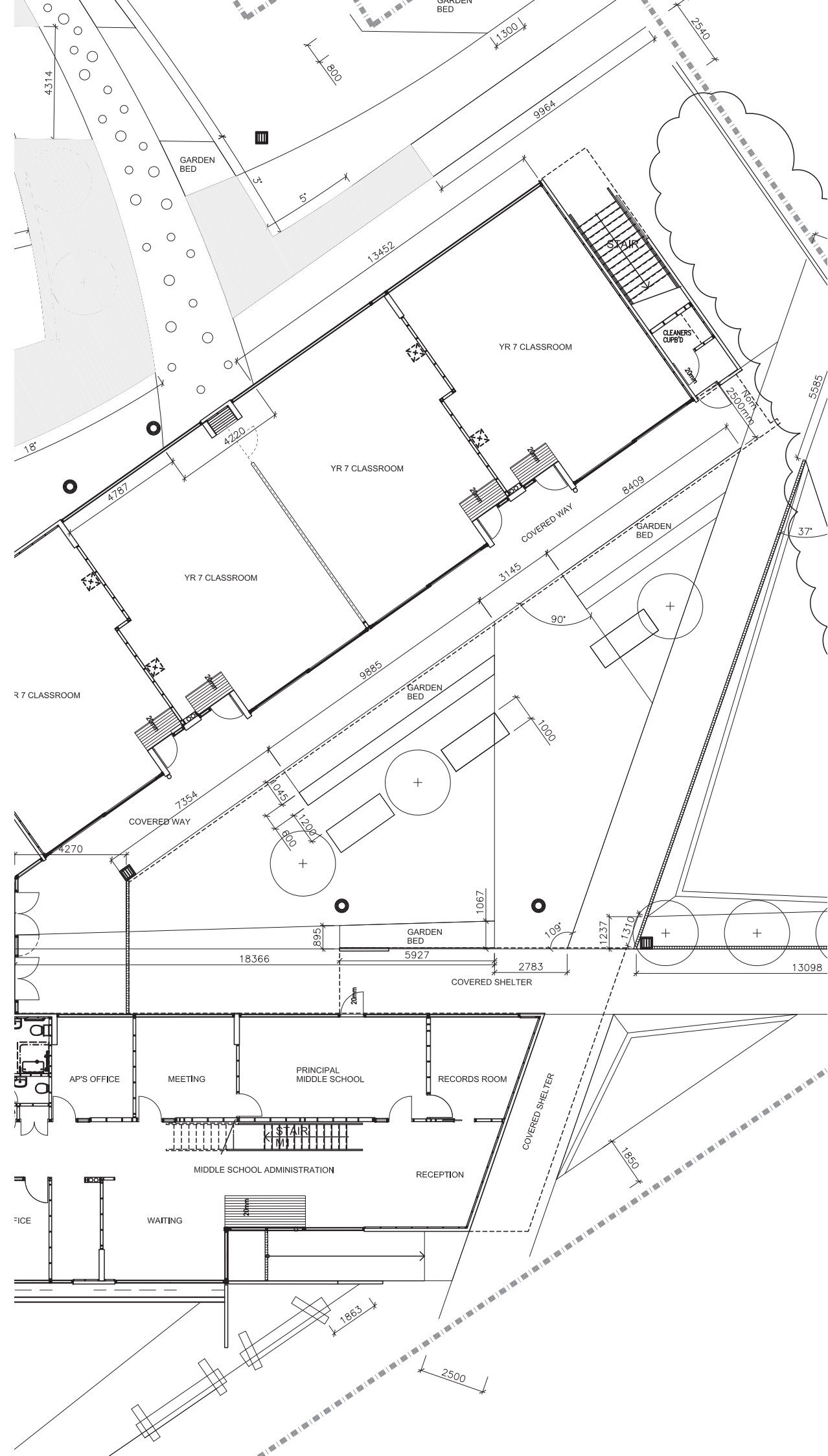
SITE SETOUT

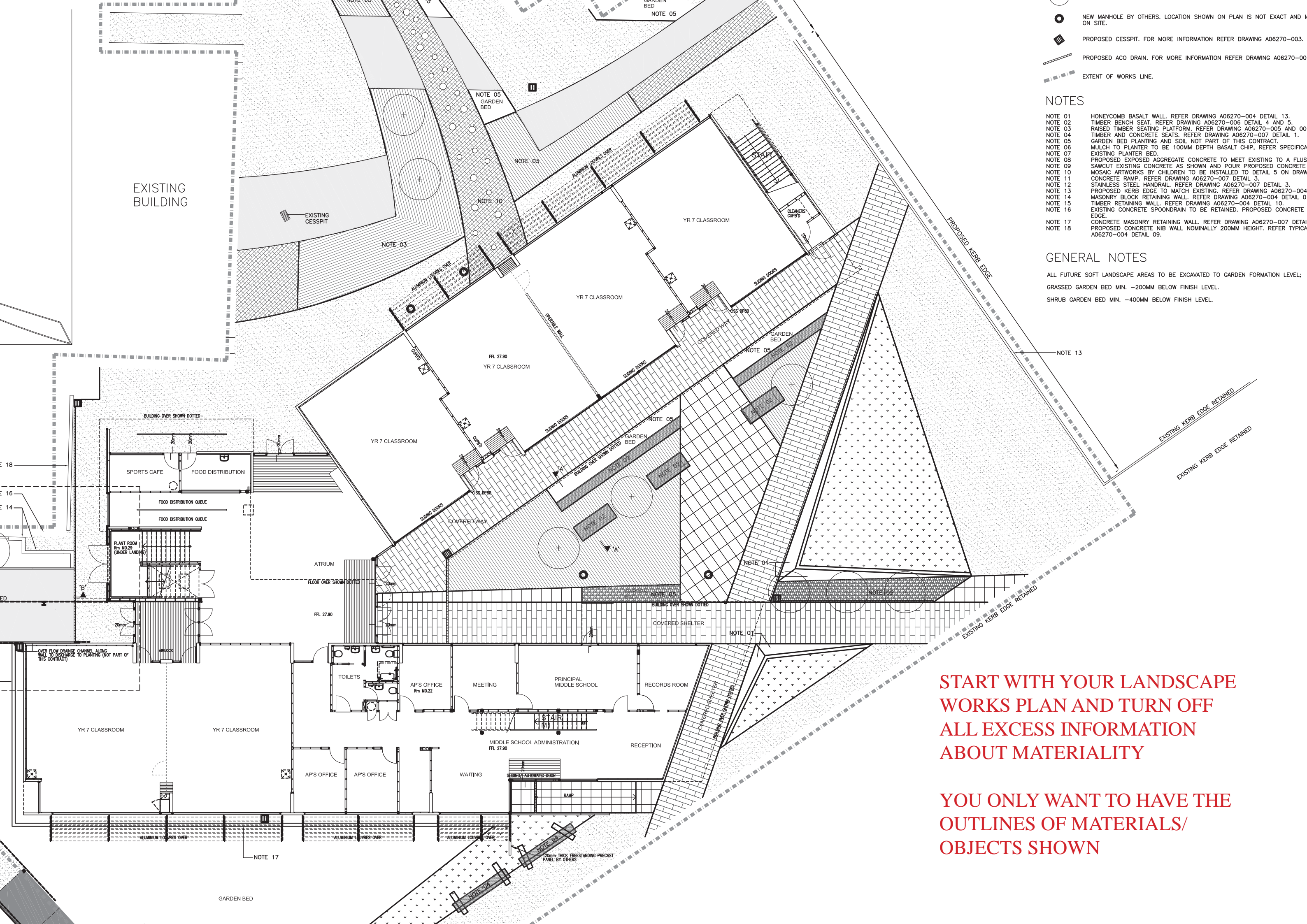
USE OF THE 2 METHODS

DIMENSION LINES

OR

X & Y AXIS CO-ORDINATES





- NEW MANHOLE BY OTHERS. LOCATION SHOWN ON PLAN IS NOT EXACT AND ON SITE.
- PROPOSED CESSPIT. FOR MORE INFORMATION REFER DRAWING A06270-003.
- PROPOSED ACO DRAIN. FOR MORE INFORMATION REFER DRAWING A06270-004.
- EXTENT OF WORKS LINE.

NOTES

- NOTE 01 HONEYCOMB BASALT WALL. REFER DRAWING A06270-004 DETAIL 13.
- NOTE 02 TIMBER BENCH SEAT. REFER DRAWING A06270-006 DETAIL 4 AND 5.
- NOTE 03 RAISED TIMBER SEATING PLATFORM. REFER DRAWING A06270-005 AND 006.
- NOTE 04 TIMBER AND CONCRETE SEATING. REFER DRAWING A06270-007 DETAIL 1.
- NOTE 05 GARDEN BED PLANTING AND SOIL NOT PART OF THIS CONTRACT.
- NOTE 06 MULCH TO PLANTER TO BE 100MM DEPTH BASALT CHIP, REFER SPECIFICATION.
- NOTE 07 EXISTING PLANTER BED.
- NOTE 08 PROPOSED EXPOSED AGGREGATE CONCRETE TO MEET EXISTING TO A FLUSH.
- NOTE 09 SAWCUT EXISTING CONCRETE AS SHOWN AND POUR PROPOSED CONCRETE.
- NOTE 10 MOSAIC ARTWORKS BY CHILDREN TO BE INSTALLED TO DETAIL 5 ON DRAWING.
- NOTE 11 CONCRETE RAMP. REFER DRAWING A06270-007 DETAIL 3.
- NOTE 12 STAINLESS STEEL HANDRAIL. REFER DRAWING A06270-007 DETAIL 3.
- NOTE 13 PROPOSED KERB EDGE TO MATCH EXISTING. REFER DRAWING A06270-004 DETAIL 0.
- NOTE 14 MASONRY BLOCK RETAINING WALL. REFER DRAWING A06270-004 DETAIL 0.
- NOTE 15 TIMBER RETAINING WALL. REFER DRAWING A06270-004 DETAIL 10.
- NOTE 16 EXISTING CONCRETE SPOONDRAIN TO BE RETAINED. PROPOSED CONCRETE EDGE.
- NOTE 17 CONCRETE MASONRY RETAINING WALL. REFER DRAWING A06270-007 DETAIL 0.
- NOTE 18 PROPOSED CONCRETE NIB WALL NOMINALLY 200MM HEIGHT. REFER TYPICAL A06270-004 DETAIL 09.

GENERAL NOTES

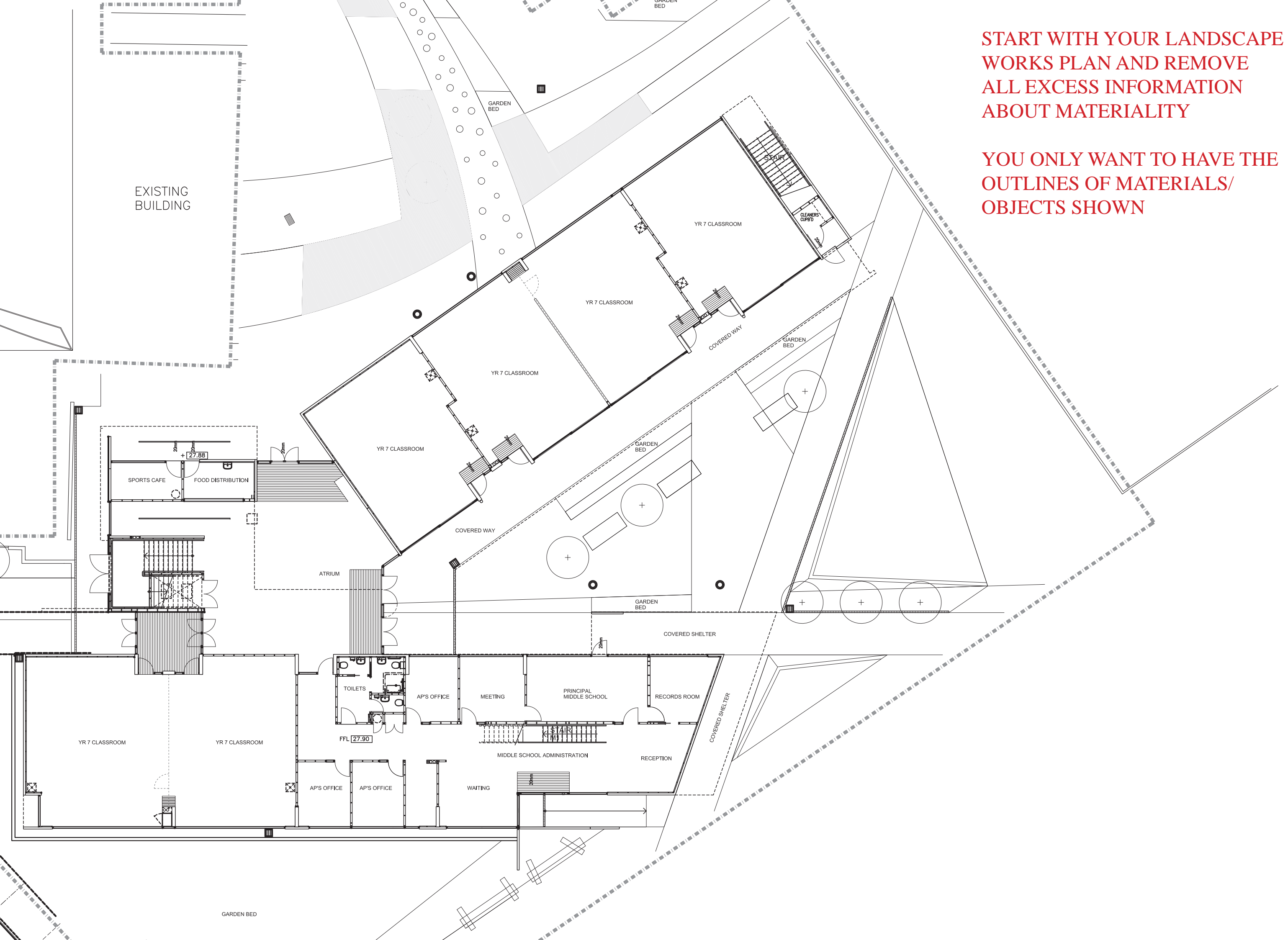
- ALL FUTURE SOFT LANDSCAPE AREAS TO BE EXCAVATED TO GARDEN FORMATION LEVEL.
- GRASSED GARDEN BED MIN. -200MM BELOW FINISH LEVEL.
- SHRUB GARDEN BED MIN. -400MM BELOW FINISH LEVEL.

START WITH YOUR LANDSCAPE WORKS PLAN AND TURN OFF ALL EXCESS INFORMATION ABOUT MATERIALITY

YOU ONLY WANT TO HAVE THE OUTLINES OF MATERIALS/ OBJECTS SHOWN

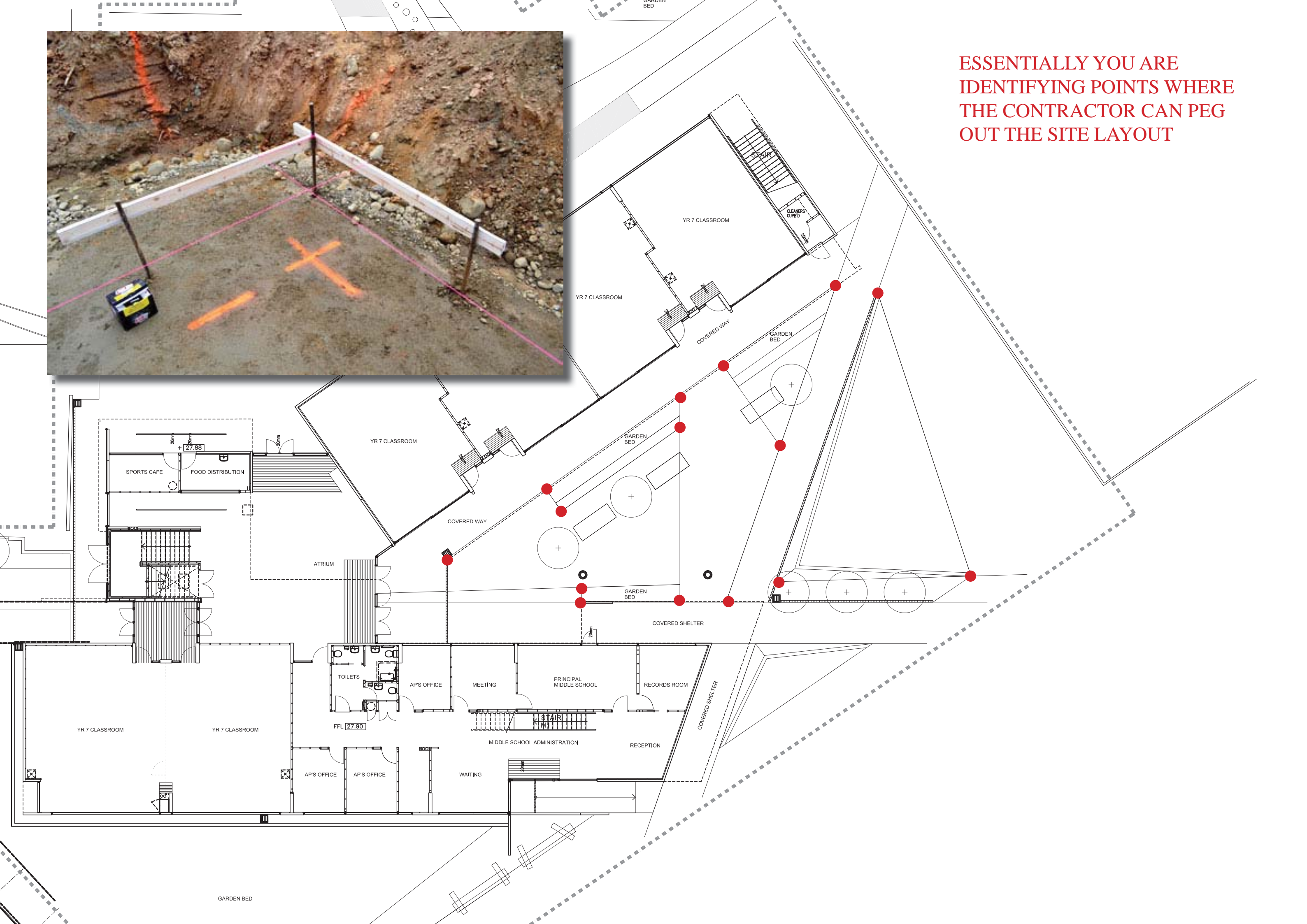
START WITH YOUR LANDSCAPE
WORKS PLAN AND REMOVE
ALL EXCESS INFORMATION
ABOUT MATERIALITY

YOU ONLY WANT TO HAVE THE
OUTLINES OF MATERIALS/
OBJECTS SHOWN





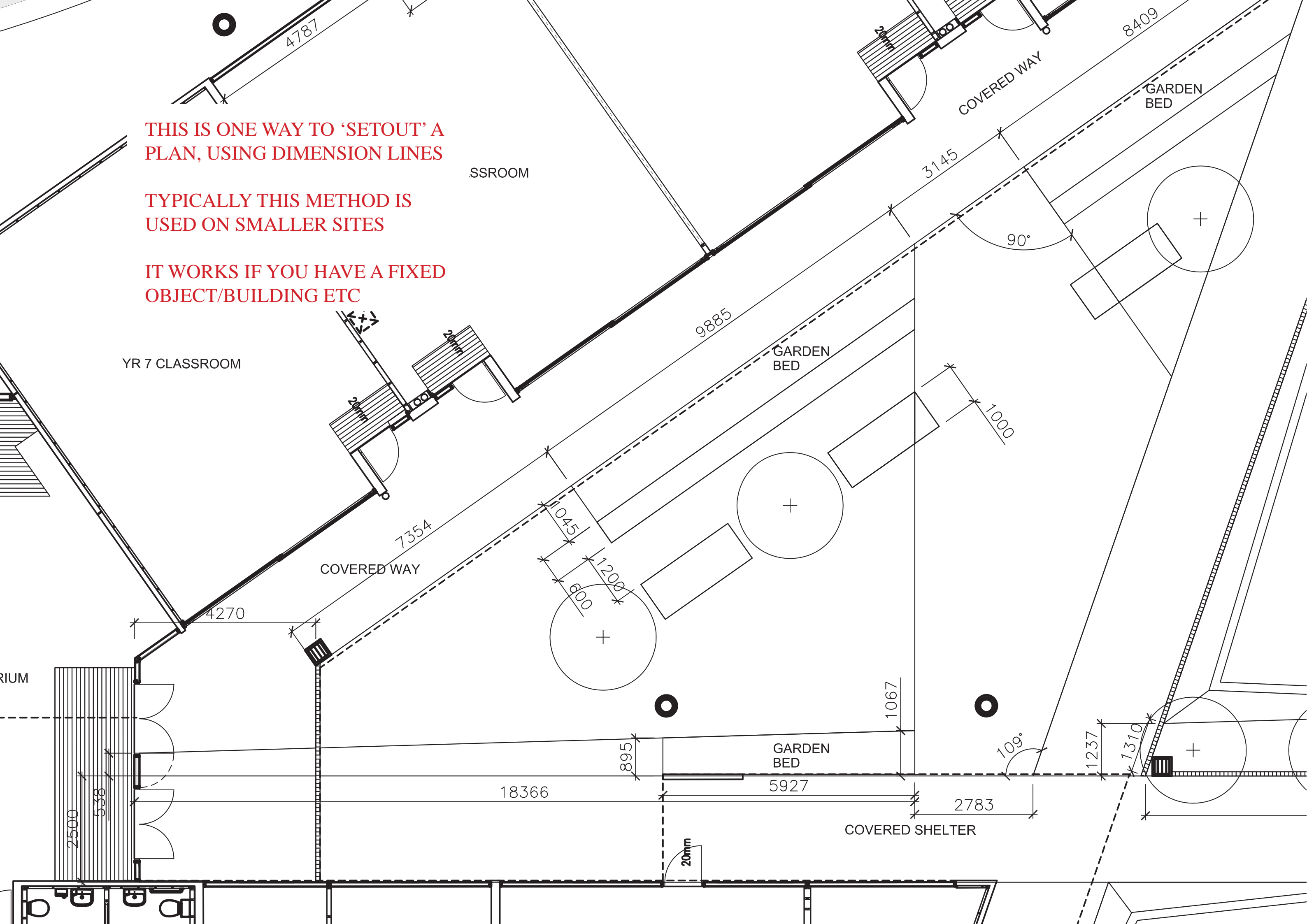
ESSENTIALLY YOU ARE IDENTIFYING POINTS WHERE THE CONTRACTOR CAN PEG OUT THE SITE LAYOUT

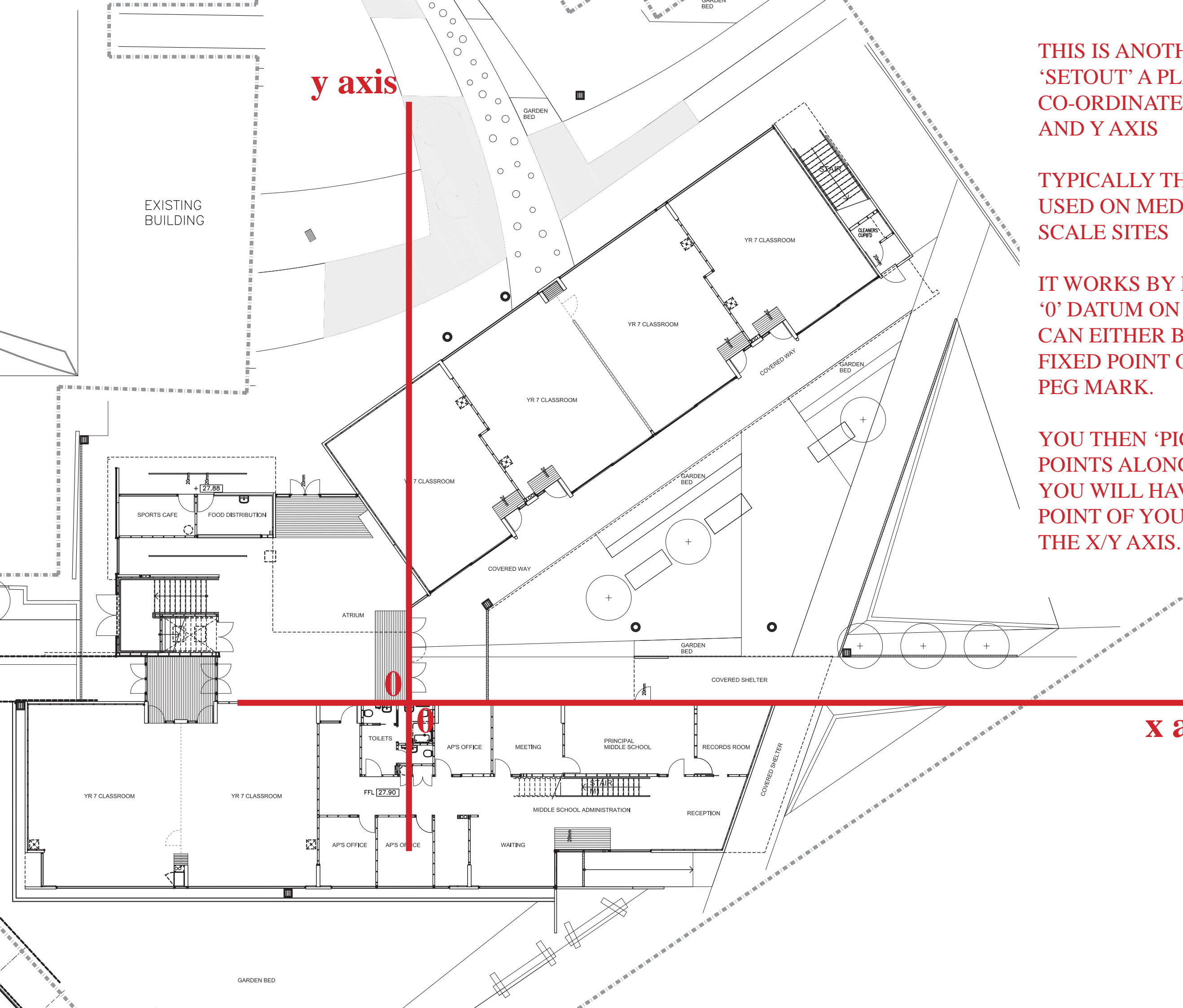


THIS IS ONE WAY TO 'SETOUT' A PLAN, USING DIMENSION LINES

TYPICALLY THIS METHOD IS USED ON SMALLER SITES

IT WORKS IF YOU HAVE A FIXED OBJECT/BUILDING ETC





y axis

THIS IS ANOTHER WAY TO 'SETOUT' A PLAN, USING CO-ORDINATES ALONG THE X AND Y AXIS

TYPICALLY THIS METHOD IS USED ON MEDIUM TO LARGE SCALE SITES

IT WORKS BY REGISTERING A '0' DATUM ON A SITE WHICH CAN EITHER BE AN EXISTING FIXED POINT OR A NEW SURVEY PEG MARK.

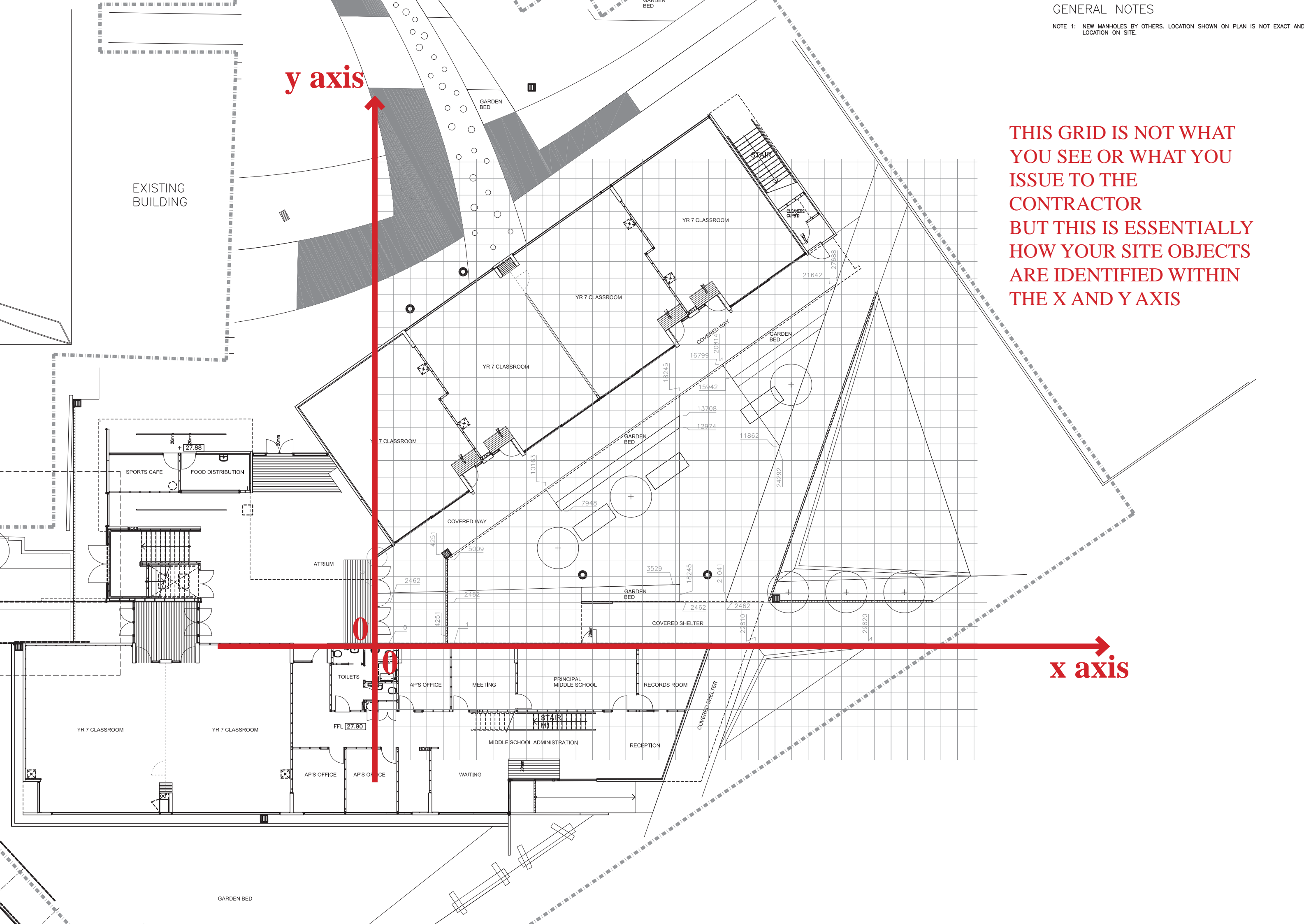
YOU THEN 'PICK' COORDINATE POINTS ALONG THE AXIS - AND YOU WILL HAVE THE EXACT POINT OF YOUR OBJECT ALONG THE X/Y AXIS.

x axis

y axis

THIS GRID IS NOT WHAT YOU SEE OR WHAT YOU ISSUE TO THE CONTRACTOR BUT THIS IS ESSENTIALLY HOW YOUR SITE OBJECTS ARE IDENTIFIED WITHIN THE X AND Y AXIS

x axis





y axis

Y

Z

NOTE: SET OUT DIMENSIONS ARE RELATIONAL. SHOULD ONE COORDINATE CHANGE, OTHER DIMENSIONS SHOULD CHANGE. A DIGITAL FILE IS AVAILABLE FOR SETOUT BY SURVEYOR.

DIMENSION KEY



OFFSET ALONG Y AXIS FROM SETOUT LINE



OFFSET ALONG X AXIS FROM SETOUT POINT



3 ARCHITECTS GRID

x axis

4

REV	DESCRIPTION	BY	DATE
1	CONSTRUCTION	SK	10/11/02

© COPYRIGHT
This drawing and design are the property of RUSHWRIGHT ASSOCIATES and may not be copied in any way without prior written approval from this company.

ALL DIMENSIONS ARE IN METRES. DO NOT SCALE DRAWINGS. VERIFY ALL DIMENSIONS AND LEVELS ON SITE BEFORE COMMENCING ANY WORK OR STOP WORKING ON COMMENCING ANY MATERIALS. NOTIFY SUPERVISOR OF ANY DISCREPANCIES FROM TO COMMENCING WORK.

NOTE: PROTECT ALL EXISTING TREES. DO NOT EXCAVATE, TRAFFIC OVER, OR PLACE ANY MATERIAL WITHIN 5 METRES OF THE CANOPY EXTENT OF ANY EXISTING TREE WITHOUT WRITTEN APPROVAL FROM THE SUPERINTENDENT.

rushwright associates
Level 11, 522 Flinders Lane
Melbourne VIC 3000
Australia
Tel: +61 3 9412 7000
Fax: +61 3 9412 7001
Email: info@rushwright.com.au
www.rushwright.com.au

Ashton Raggatt McDougall
Level 11, 522 Flinders Lane
Melbourne, VIC 3000, Australia
Telephone: +61 3 9412 7000
Facsimile: +61 3 9412 7001
Email: am.mcdougall@ar.com.au
Web: www.ar.com.au

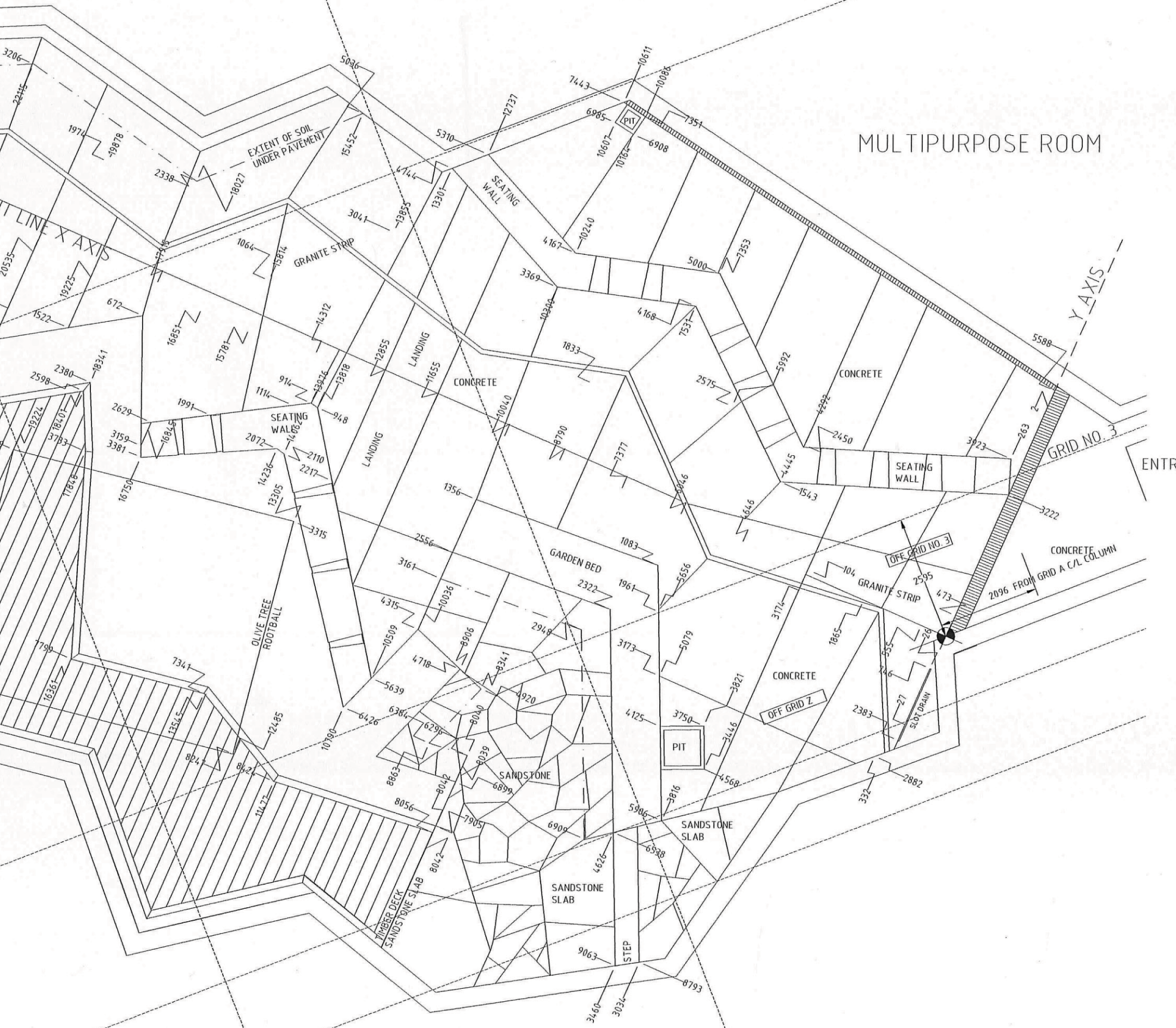
SHRINE OF REMEMBRANCE TRUSTEES

PROJECT
SHRINE OF REMEMBRANCE UNDERCROFT DEVELOPMENT STAGE 1

FILE
LANDSCAPE WORKS NW COURTYARD CONSTRUCTION SETOUT

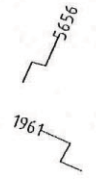
FOR CONSTRUCTION			
DATE	10/11/02	SCALE	1:50
DRAWN	SK	CHECKED	MW
JOB No.	0047	REV.	
DRAWING No.	GA-L017		

NOTE: SET OUT DIMENSIONS ARE RELATIONAL. SHOULD ONE COORDINATE CHANGE, OTHER DIMENSIONS SHOULD CHANGE. A DIGITAL FILE IS AVAILABLE FOR SETOUT BY SURVEYOR.



MULTIPURPOSE ROOM

DIMENSION KEY



OFFSET ALONG Y AXIS FROM SETOUT LINE

OFFSET ALONG X AXIS FROM SETOUT POINT