

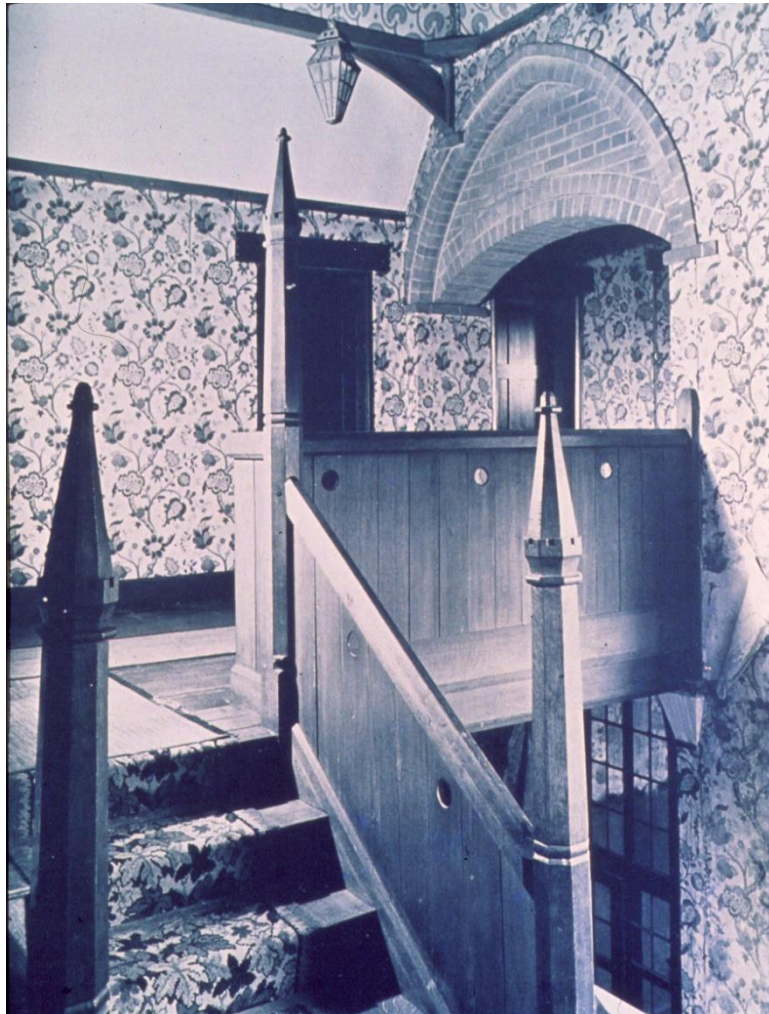
Webb's Red House - 1859

source: Kaplan,W (1998) Encyclopaedia of Arts and Crafts1850-1920



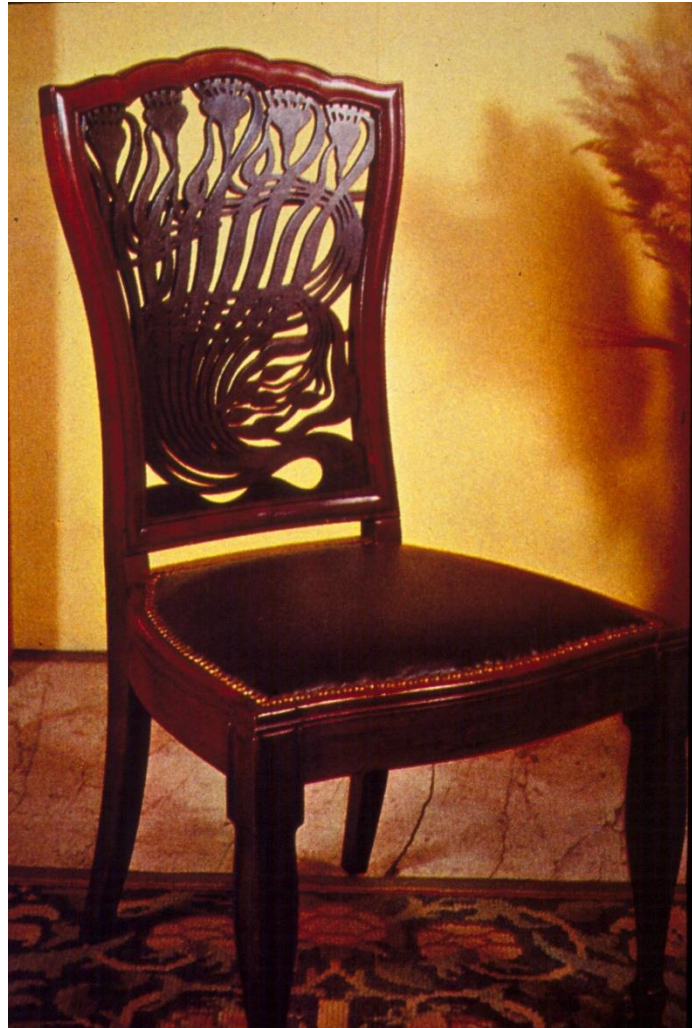
Webb's Red House – interior

source: Kaplan,W (1998) Encyclopaedia of Arts and Crafts1850-1920



Mackmurdo Chair

source: Kaplan,W (1998) Encyclopaedia of Arts and Crafts1850-1920



Arthur Heygate Mackmurdo.

source: Kaplan,W (1998) Encyclopaedia of Arts and Crafts1850-1920



The Orchard House – Voysey

source: Kaplan,W (1998) Encyclopaedia of Arts and Crafts1850-1920



Furnishings by Voysey

source: Kaplan,W (1998) Encyclopaedia of Arts and Crafts1850-1920



one of the
commercial
realise his gr
Victorian fab
forms derive
Victorian arc
past styles –
indiscrimina
insensitivity
with the vis
In Morris's v
influences fr
for instance,
fabrics, Ori
were always
that all the p
together in

His work ha
from that of
Where other
insensitive t
purpose, his
where other
overbearing
and pseudo
characterise
between for
all by a flat



William Mo
producing n
a better life.
larger syste
One feels th
pretentious
has been let
return to fir
for simplici

The furnitur
designed by
tendencies:
regard for h
were based
still in com
were also o
furniture, so
paintings of
very costly.
contradictio
his aim was
improve the
and user, th
made goods
anyone exp
against bein
swinish lux

In spite of v

School of Art Glasgow- Mackintosh

ref: greatbuildings.com



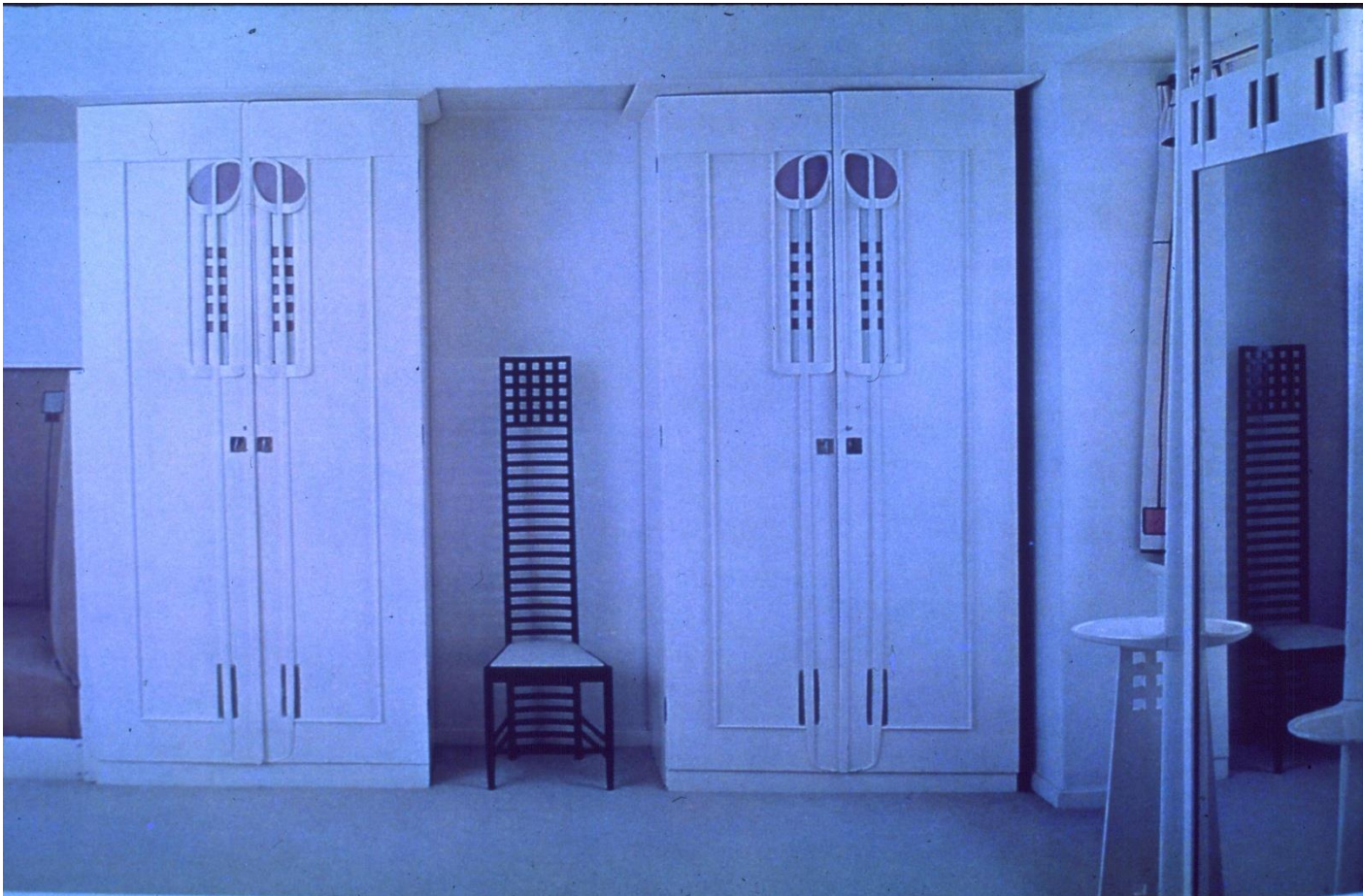
School of Art Glasgow-Mackintosh

ref: greatbuildings .com



School of Art Glasgow-Mackintosh

ref: greatbuildings .com



School of Art Glasgow-Mackintosh

ref: greatbuildings .com



Casa Batllo – Gaudi

source: Zerbst,R (1985) Antoni Gaudi



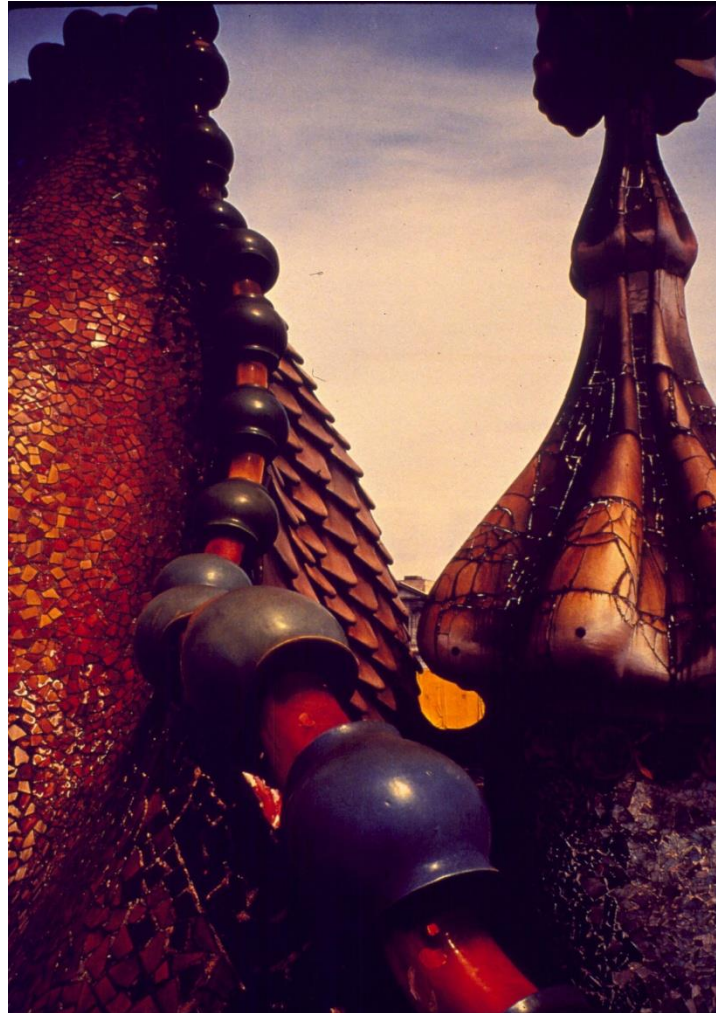
Casa Batllo – Gaudi

source: Zerbst,R (1985) Antoni Gaudi



Casa Batllo – Gaudi

source: Zerbst,R (1985) Antoni Gaudi



Casa Mila –Gaudi

source: Zerbst,R (1985) Antoni Gaudi



Casa Mila – Gaudi

source: Zerbst,R (1985) Antoni Gaudi



Casa Mila- Gaudi

source: Zerbst,R (1985) Antoni Gaudi



Parc Guell crypt – Gaudi

source: Zerbst,R (1985) Antoni Gaudi



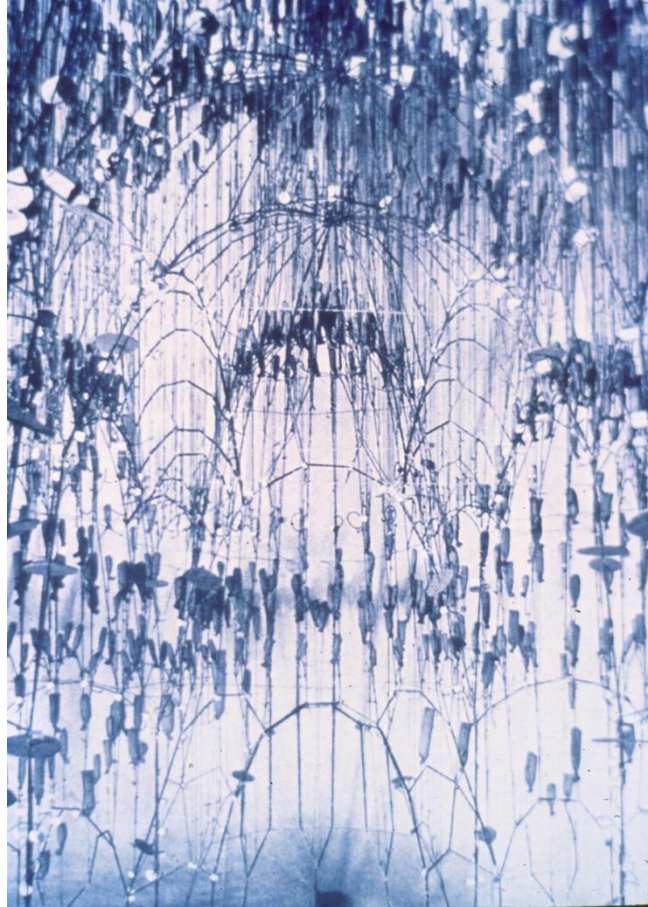
Parc Guell –Gaudi

source: Zerbst,R (1985) Antoni Gaudi



Gaudi force model for the crypt structure

source: Zerbst, R (1985) Antoni Gaudi



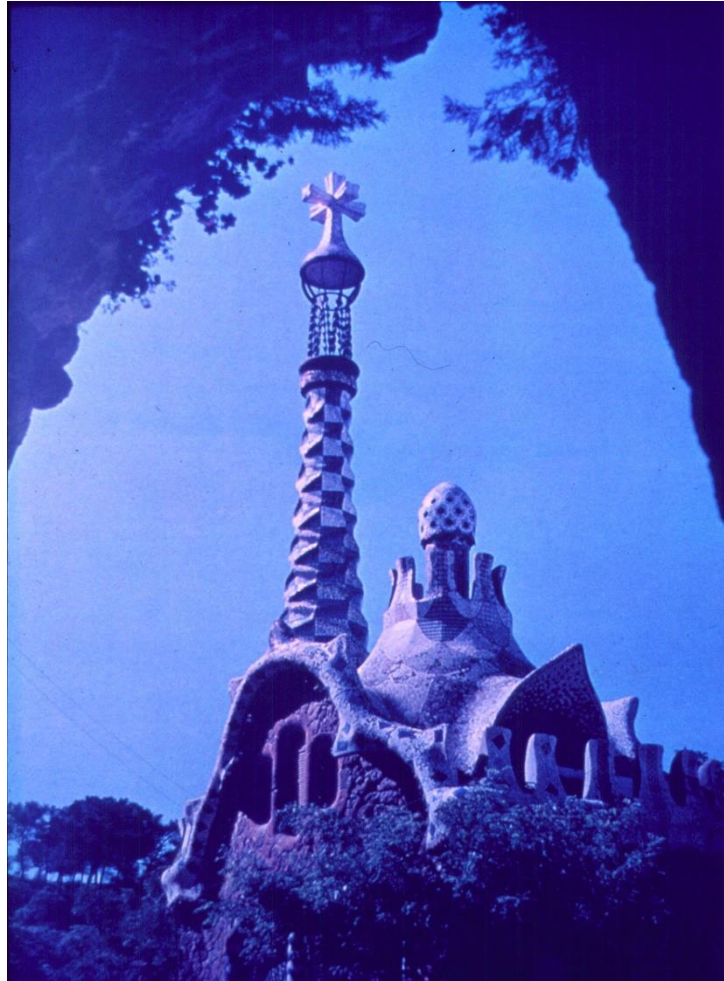
Casa Battlo interior – Gaudi

source: Zerbst,R (1985) Antoni Gaudi



Parc Guell 1

source: Zerbst,R (1985) Antoni Gaudi



Parc Guell 2

source: Zerbst,R (1985) Antoni Gaudi



Parc Guell crypt

source: Zerst,R (1985) Antoni Gaudi



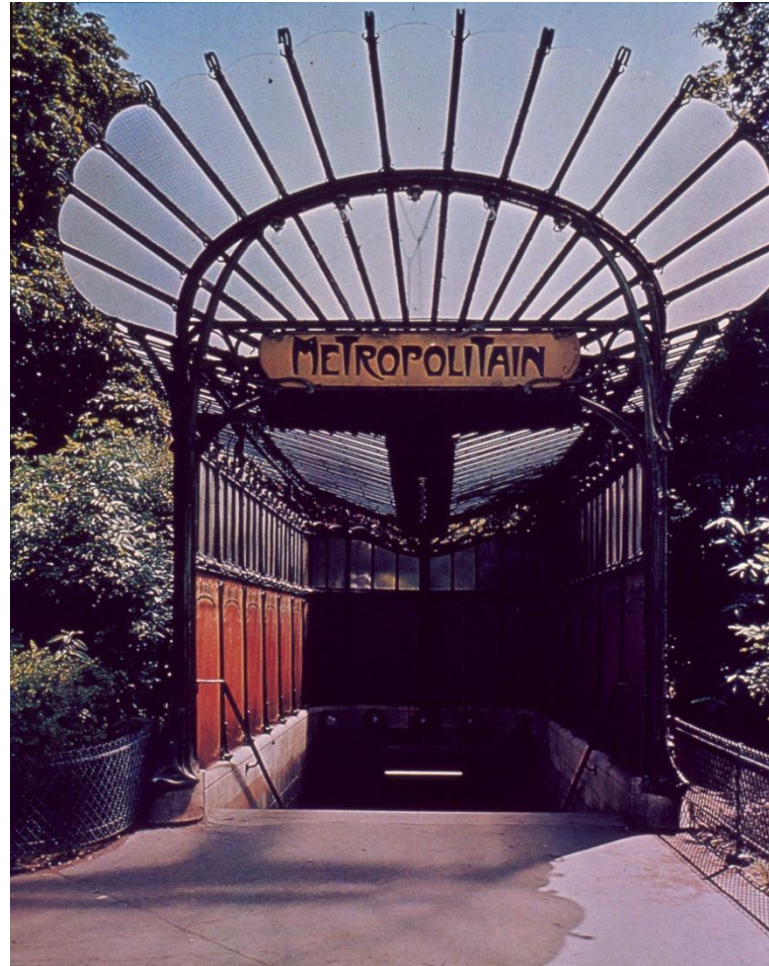
Sagrada Família – Gaudi

source: Zerbst,R (1985) Antoni Gaudi



Metro entrance by Guimard in Paris

ref: wikipedia.org



Castle Beranger by Guimard

ref: wikipedia.org

