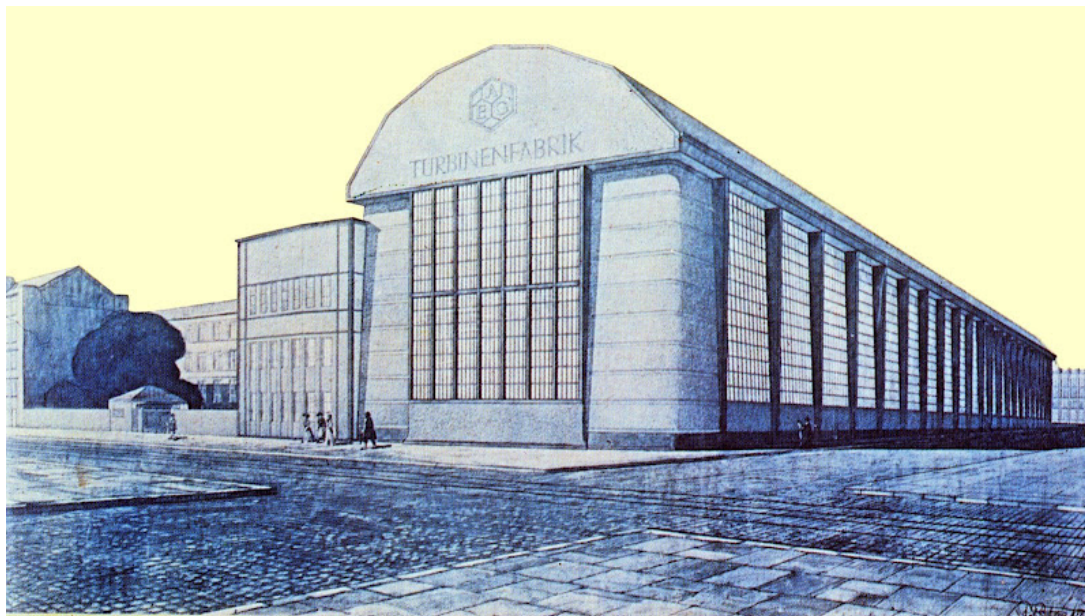
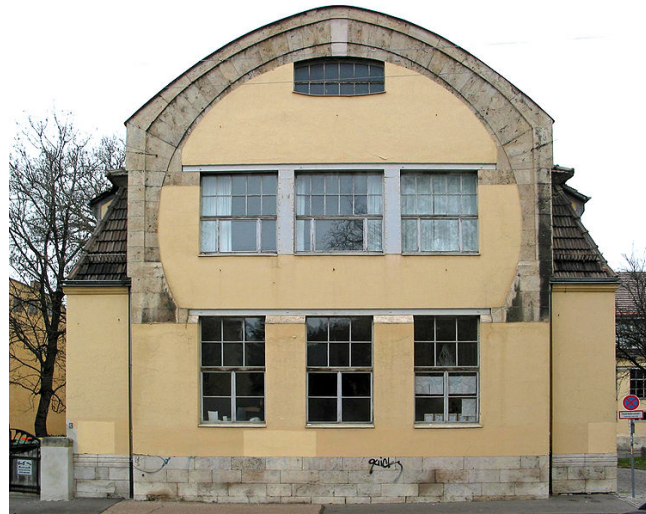




# Early Modernism in Europe and the US.

## Part 1 - Europe

# Early European Modernism



# Early European Modernism



Secession Building Vienna.  
1897 by Joseph Maria  
Olbrich.

Glasgow School of Art. Charles  
Rennie Mackintosh. 1897-  
1909



*“Art outside the confines of academic tradition “*

# Early European Modernism



Jugendstil

Deutsche Werkbund

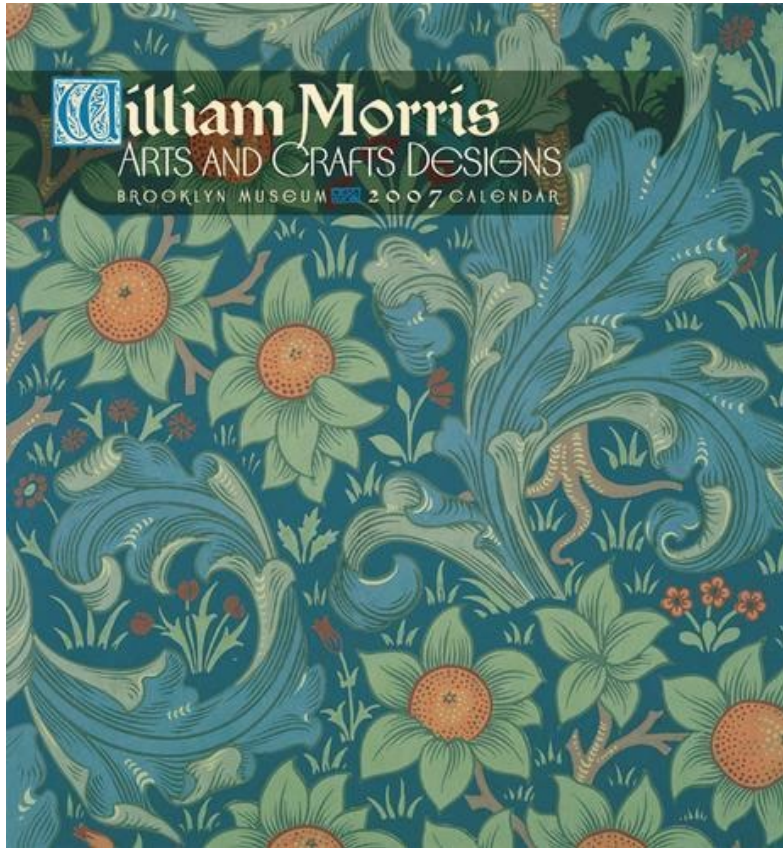


Vienna Secession.

*"All art is at once surface and symbol"*  
Oscar Wilde

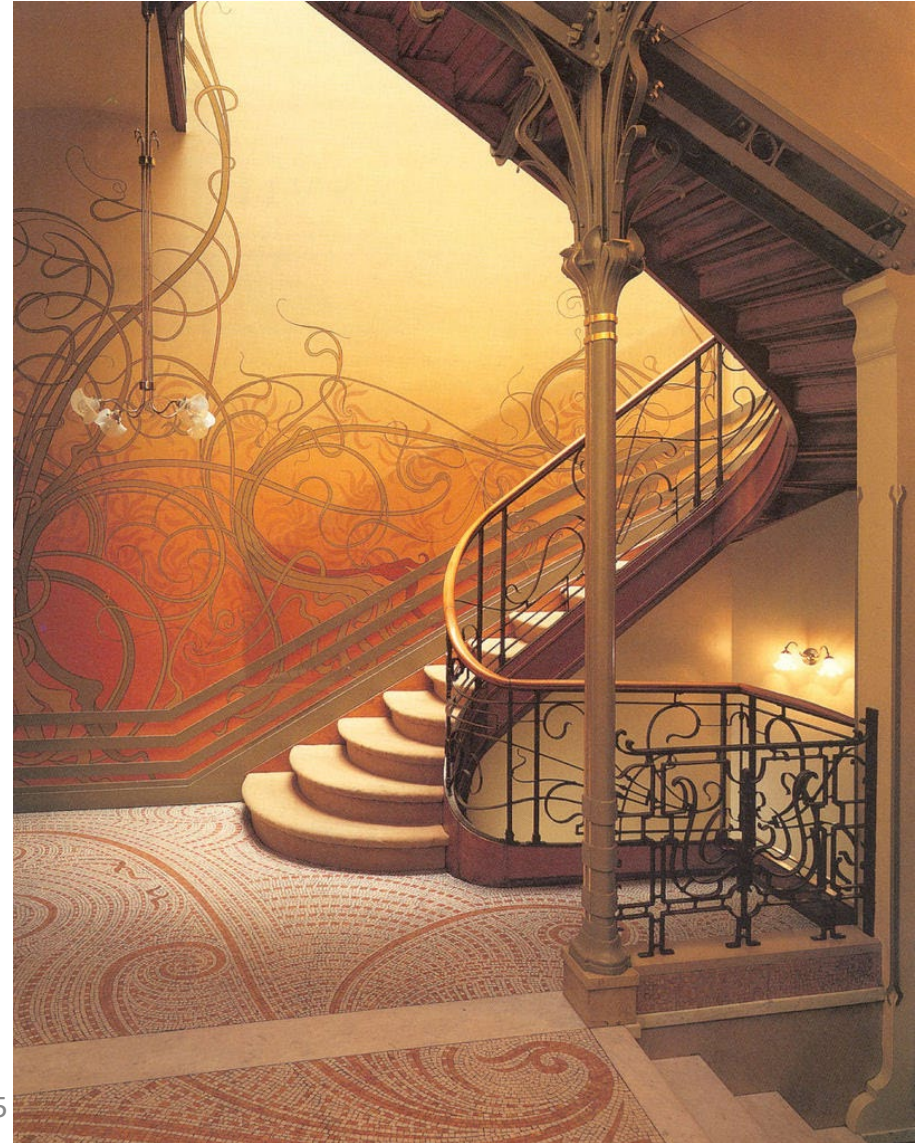


# Early European Modernism



Arts and Crafts developed in England in the 1860s. Art Nouveau arose in the Belle Epoque of the 1890s in Paris, Munich (Jugendstil), and Wiener (Sezession). Art Nouveau is a rejection of the European Academic Style

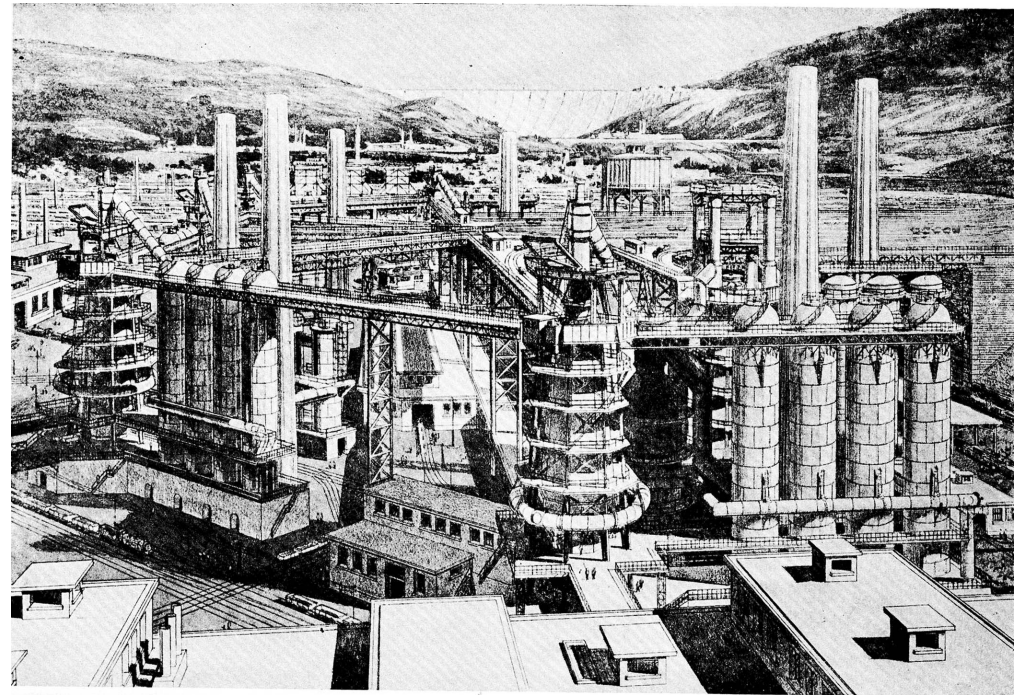
Superficially, Arts and Crafts is floral patterned wallpaper, Art Nouveau is posters of wimmen with flowers in their hair.



# Early European Modernism



Garnier, Cité Industrielle: o centro (com edifícios para reuniões em forma de losango) e moradias, 1917. (Fonte: FRAMPTON, 1997)



67. Cité Industrielle, furnaces, view, dated 1917.

Garnier Cite industrielle

© Unitec New Zealand

# Early European Modernism

Vienna Postal savings bank- Otto Wagner. 1905



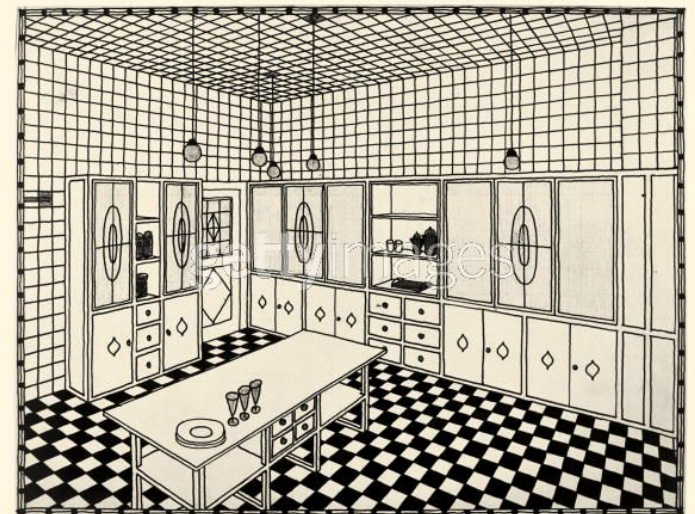
# Early European Modernism

Palais Stoclet by Josef Hoffmann 1905 - 1911



REGIERUNGSRAT PROFESSOR JOSEF HOFFMANN, WIENER WERKSTÄTTE, WIEN  
Das Stoclethaus zu Brüssel. — Die Straßenfassade

Fassadenverkleidung in weißem Marmor von Turilli (Norwegen), eingefasst mit wulstförmigen, schwarz oxydierten Kupferstäben mit getriebenen, vergoldeten Ornamenten. Die in Kupfer getriebenen Monumentalfiguren des Turmes nach Entwürfen von Professor Metzner



This house had many items and arefacts designed by such icon as Gustav Klimt as seen top right.

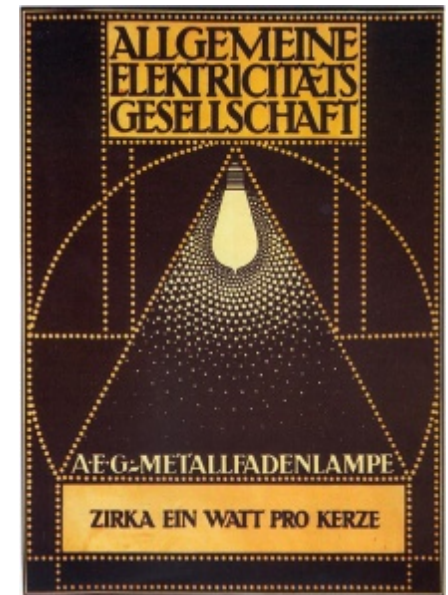


# Early European Modernism



AEG Turbine Factory by Peter Behrens.  
1908-09

© Unitec New Zealand



# Early European Modernism



Goldman and Salatsch Building-  
Adolph Loos 1909

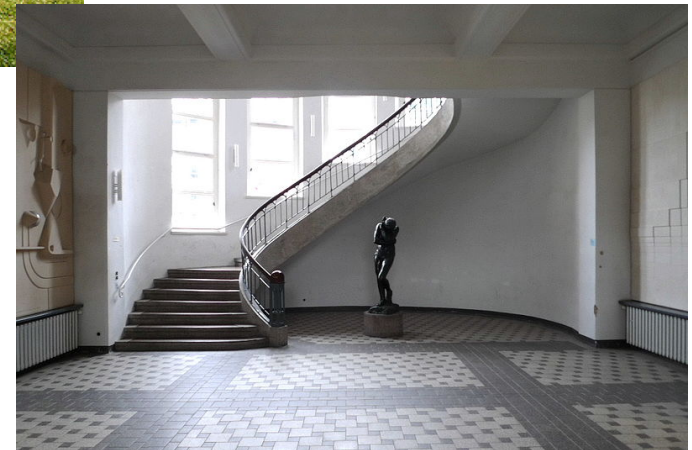
# Early European Modernism

The main building of the Bauhaus University Weimar. 1904-1911 by Henry van Der Velde



Foyer of the Bauhaus University Building Weimar.

*“Decorate construction but never construct decoration”*



# Early European Modernism

Fagus Factory 1911-1913 by Walter Gropius and Adolph Meyer



*Is there beauty  
inherent in  
functional design ?”*

# Early European Modernism

Bauhaus building at Dessau by Walter Gropius.

*“Architecture adapted to our world of machines, radios and fast cars.”*  
Gropius.

Constructed between 1919 -1925



# Early European Modernism



Typography above workshop block of the Bauhaus at Dessau by Herbert Bayer.



# Early European Modernism

Helsinki Railway Station by Eliel Saarinen . 1919.



# Early European Modernism

Zonnestraal Sanitarium in Hilversum , Netherlands by Jan Duiker. 1925





# Early European Modernism

Malmo Opera House by Sigurd  
Lewerentz and others . 1933-1944.



# Early European Modernism

Wassily Chair by Marcel Breuer



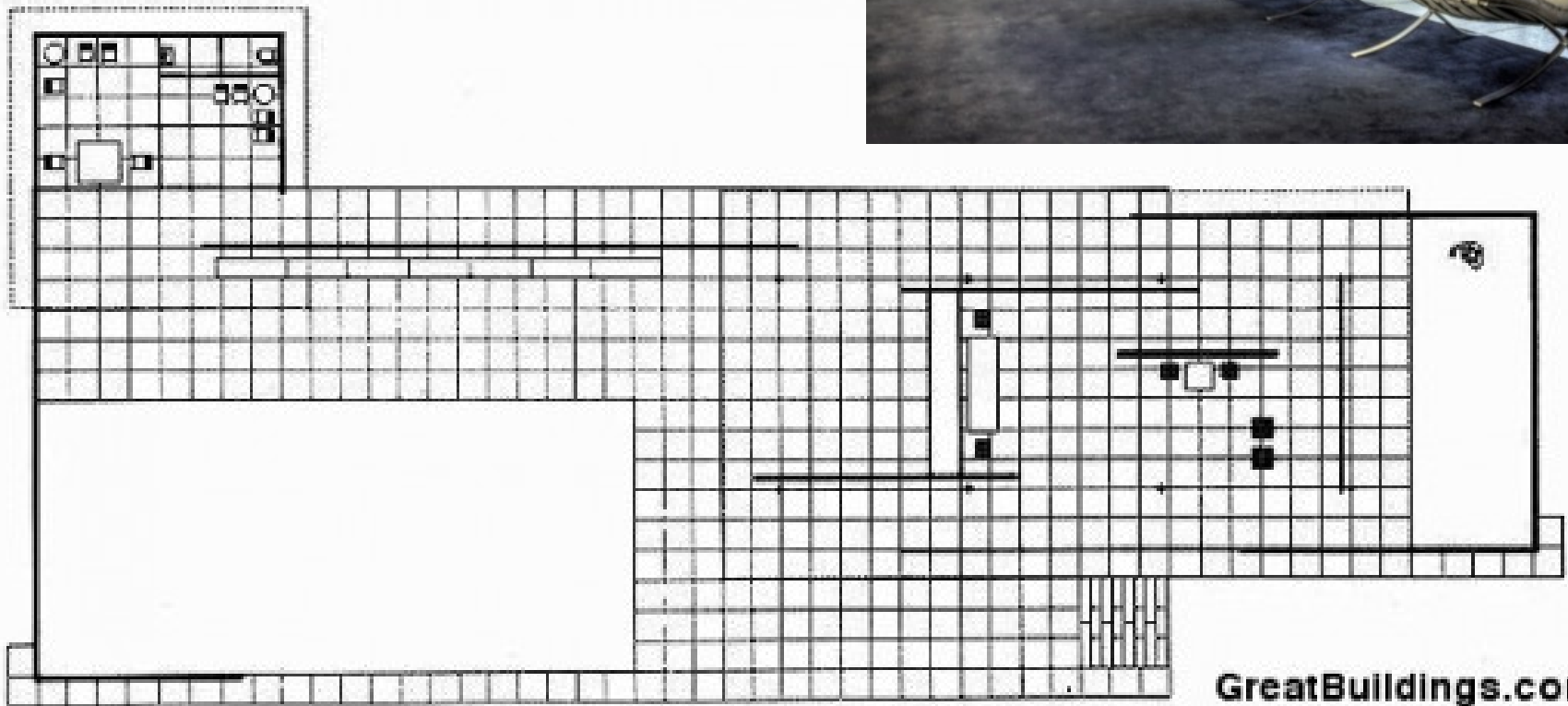
Example of a cantilever chair.

Barcelona Chair by Mies Van Der Rohe.

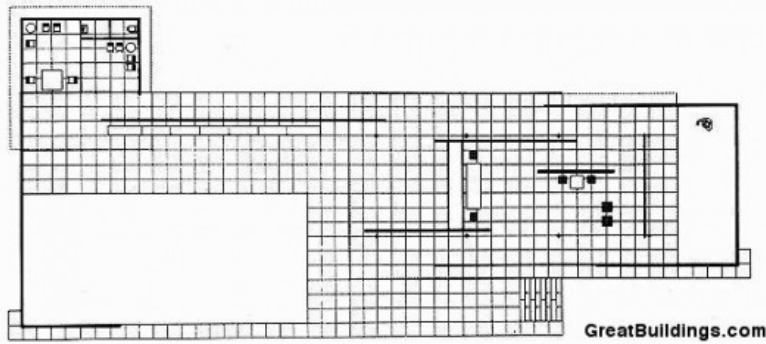


# Early European Modernism

Barcelona chair in the pavilion for which it was designed. 1929.



# Early European Modernism



Barcelona Pavilion by  
Mies Van Der Rohe.  
1929.

# Early European Modernism



Isokon.

Lawn  
road flats  
by  
Welles  
Coates  
and  
partners.

1934.

# Early European Modernism



Villa Savoye. Le Corbusier

# Early European Modernism

La Tourette Convent



Unite D' Habitation



# Early European Modernism

## Ronchamp Church

