



# The 90s until today.

## Architectural history snapshot.

International buildings .

International architects.

Selected international architecture. 1990's until present. Experience Museum Project

Frank Gehry. Seattle. 1995-2000



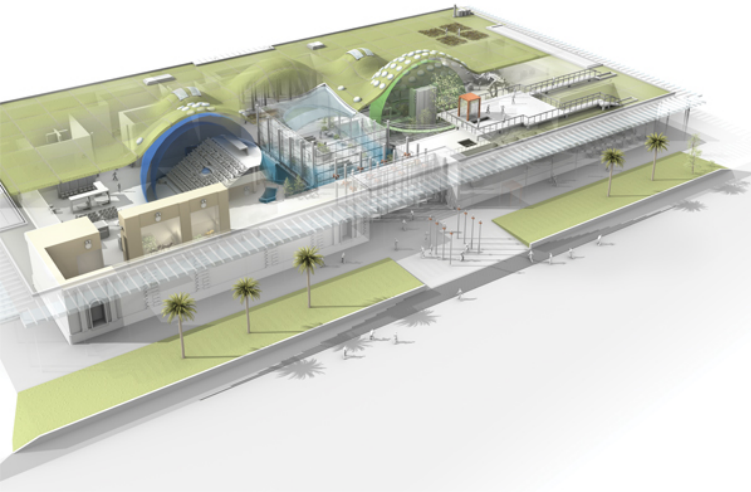


Selected international architecture. 1990's until present. Jewish Museum Berlin 1999



Daniel Libeskind

Selected international architecture. 1990's until present.



explaining,  
and protecting the natural world



Selected international architecture. 1990's until present.



© Malachy McGarrigle 2016



© Malachy McGarrigle 2016



© Malachy McGarrigle 2016

Selected international architecture. 1990's until present.



© Malachy McGarrigle 2016



© Malachy McGarrigle 2016

# Selected international architecture. 1990's until present.



© Malachy McGarrigle 2016



© Malachy McGarrigle 2016



© Malachy McGarrigle 2016

Selected international architecture. 1990's until present.



© Malachy McGarrigle 2016

**De Young Memorial museum.  
Herzog and De Meuron. 2005  
San Francisco**



© Malachy McGarrigle 2016



© Malachy McGarrigle 2016



Selected international architecture. 1990's until present.



© Malachy McGarrigle 2016



© Malachy McGarrigle 2016



© Malachy McGarrigle 2016

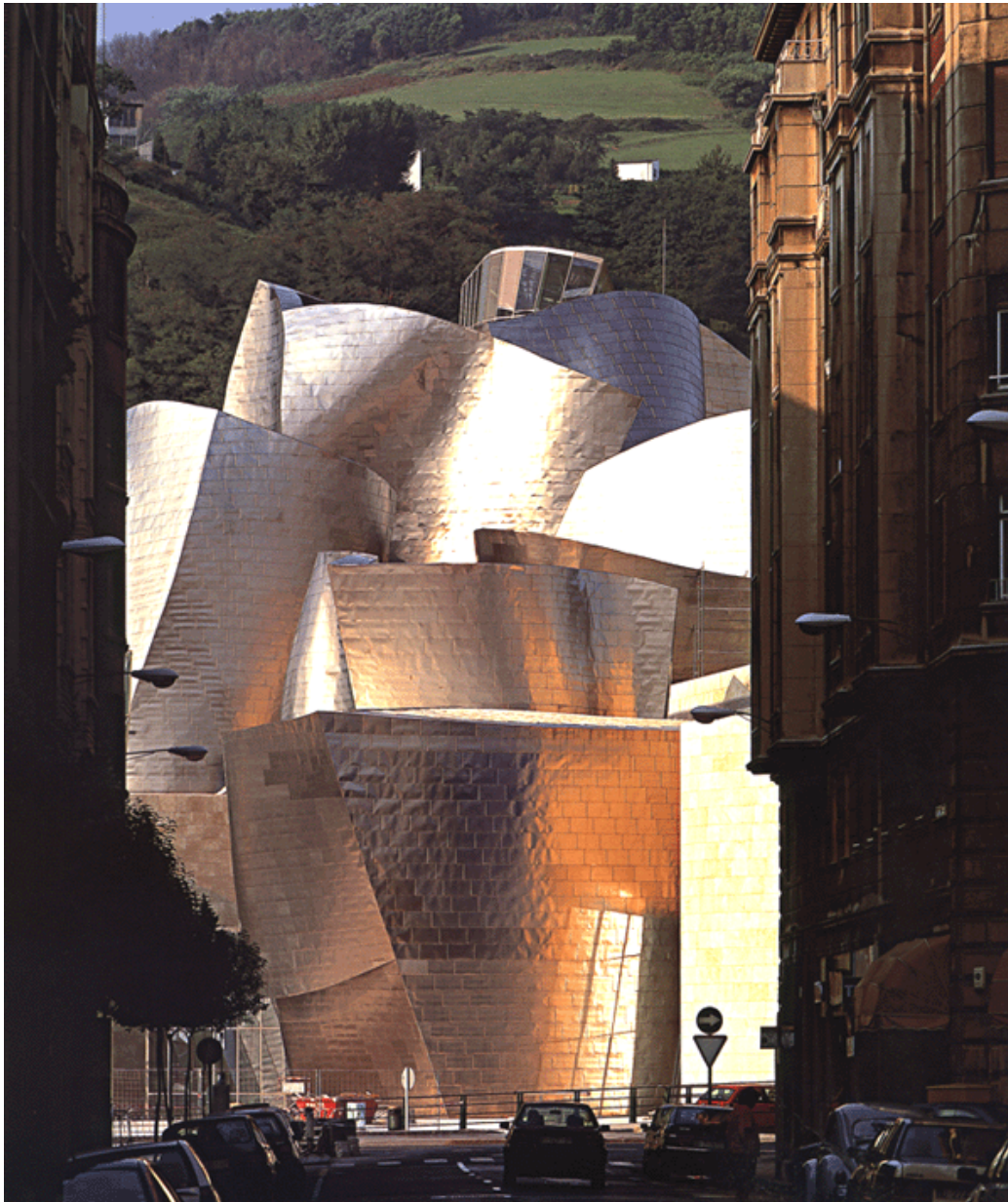
Selected international architecture. 1990's until present. Tate Modern . 2000



Selected international architecture. 1990's until present. Bilbao Guggenheim



Selected international architecture. 1990's until present.



Selected international architecture. 1990's until present.



**Frederick R. Weisman Art  
Museum. 1993.  
Frank Gehry  
Minneapolis USA**

Selected international architecture. 1990's until present.

**Disney Concert Hall**  
**Frank Gehry**  
**Los Angeles. 2003**



Selected international architecture. 1990's until present.

Dr Chau Chak Wing  
Building 2015  
Sydney UTS

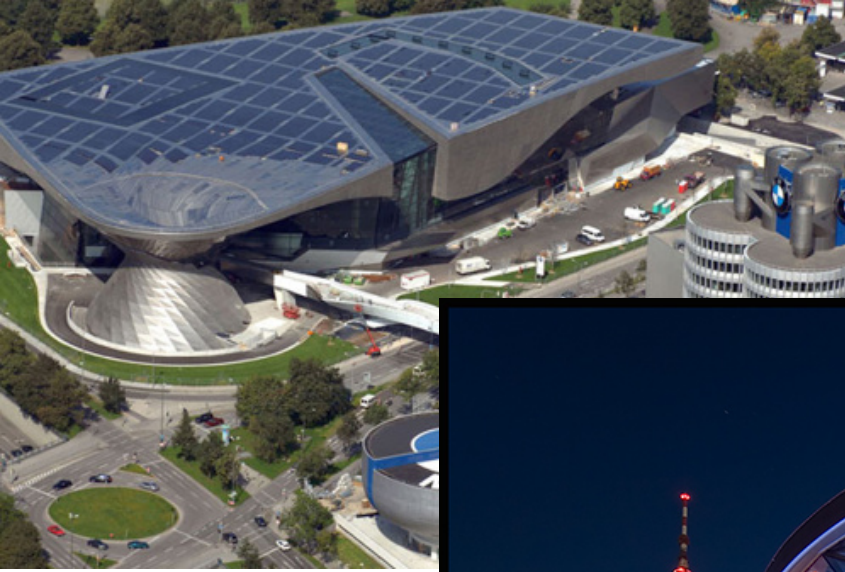


Gehry and Vlado Muncic.  
Dancing house Prague.





Selected international architecture. 1990's until present.



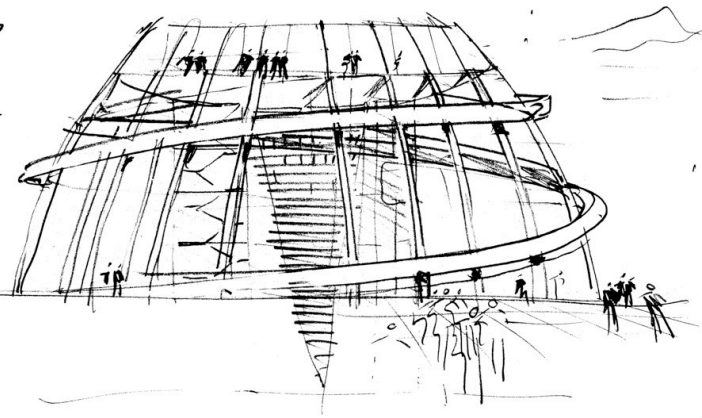




# Selected international architecture. 1990's until present.



of course in this  
approach  
it's not easy  
to incorporate  
stairs &  
staircases  
from  
upper  
platform  
down  
to main  
level.



Selected international architecture. 1990's until present.

Diagonal bracing reduces number of columns  
floorspaces inside are open



Selected international architecture. 1990's until present. Nimes Carre d Art

## Foster and Partners 1993



**Foster and Partners 1993**



Selected international architecture. 1990's until present. Valencia Congress Centre

**Foster and Partners 1998**



Selected international architecture. 1990's until present.



©Marks Barfield Architects

2000. 135 m high. 32 capsules

Selected international architecture. 1990's until present.



Selected international architecture. 1990's until present.



Copyright © Buro Happold \ Mandy Reynolds





Selected international architecture. 1990's until present.



2004

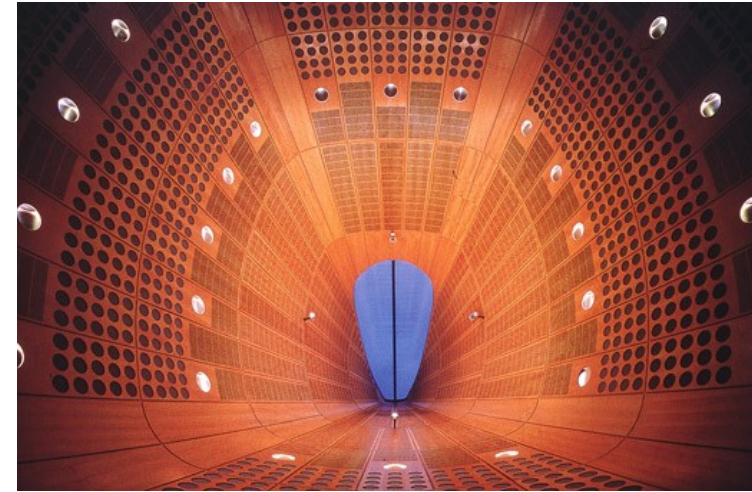
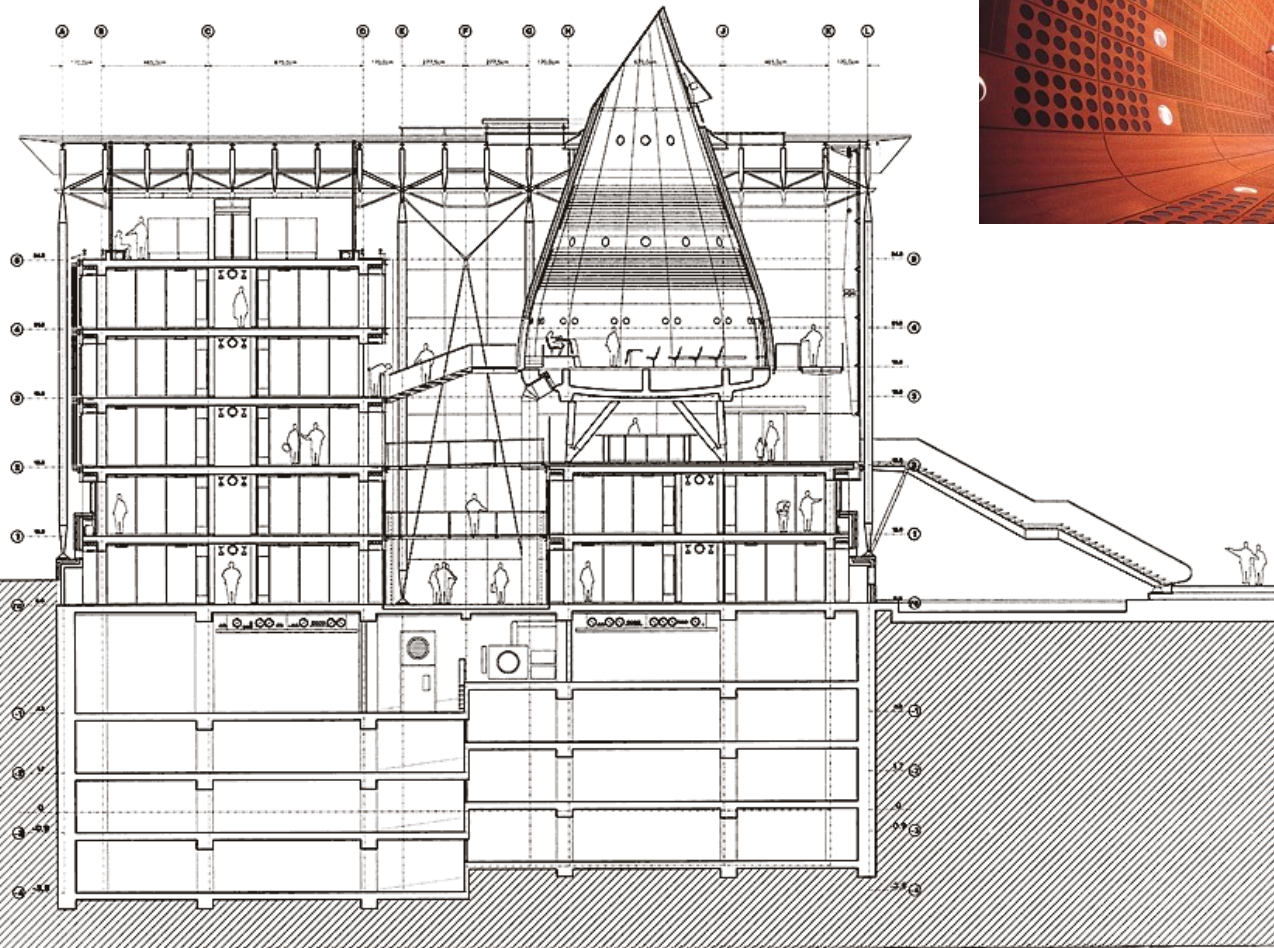
Selected international architecture. 1990's until present.

## **Bordeaux Law Courts. Richard Rogers. 1998**



Selected international architecture. 1990's until present.

## Bordeaux Law Courts



Seattle Central  
Library 2004



Selected international architecture. 1990's until present. Rem Koolhaas

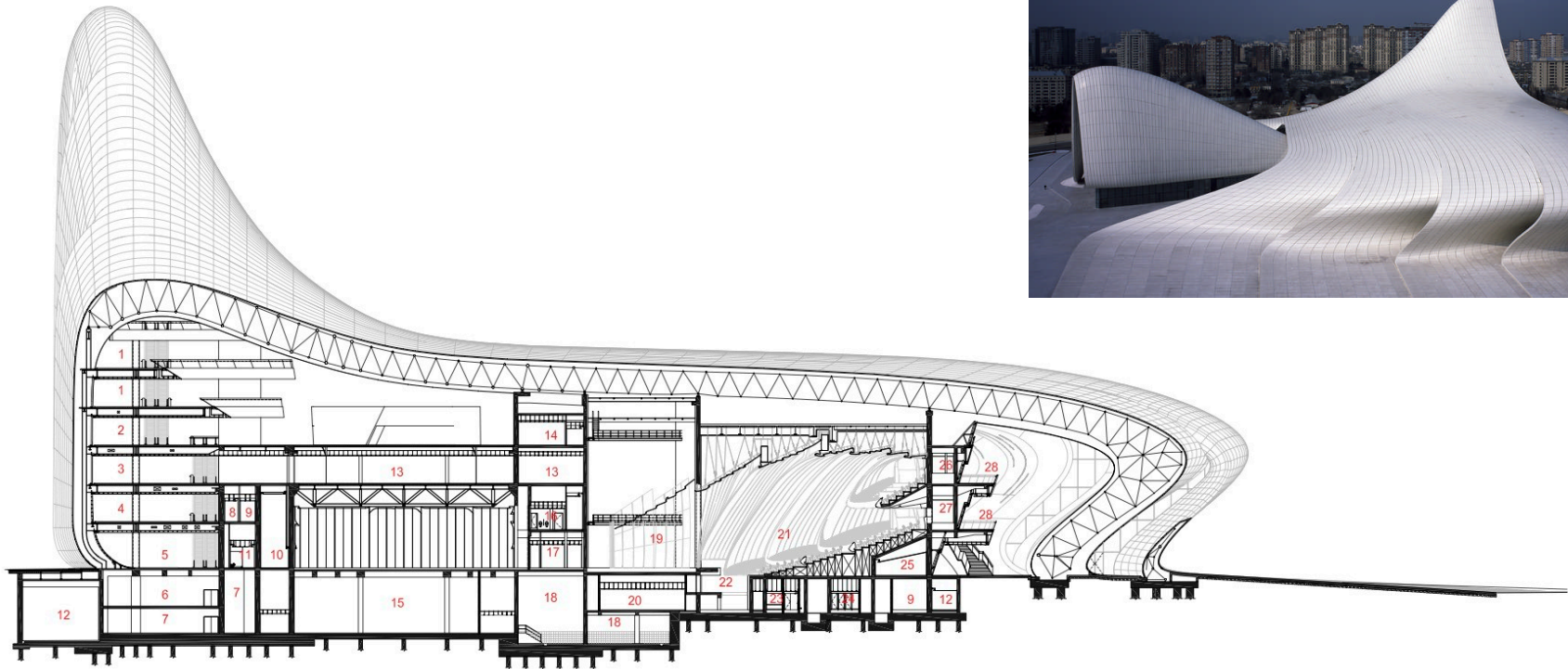


Selected international architecture. 1990's until present.

**Heydar Aliyev centre.  
Baku. 2013**



# Selected international architecture. 1990's until present.



- 1 Learning and Reading Zone
- 2 Multimedia Zone
- 3 Business Zone
- 4 Children's Activity Zone
- 5 Welcome Zone
- 6 Library Storage
- 7 Library Stack
- 8 Disabled Restroom
- 9 Janitor's Room
- 10 Conference Centre Lobby
- 11 Female Restroom
- 12 Loading Bay
- 13 Meeting Room
- 14 Network Room
- 15 Auditorium/Multipurpose Hall Storage
- 16 Male Restroom
- 17 Service Kitchen
- 18 AHU Room
- 19 Main Stage
- 20 Backstage Storage
- 21 Auditorium
- 22 Orchestra Pit
- 23 Guest Dressing Room
- 24 Women's Locker Room / WC
- 25 CloakRoom
- 26 Translator Room
- 27 Projection Room
- 28 Balcony



Section A-A  
Heydar Aliyev Centre

## Heydar Aliyev centre. Baku. 2012

Selected international architecture. 1990's until present.



**Galaxy Soho  
Beijing China.  
2009 - 2012**



Selected international architecture. 1990's until present.



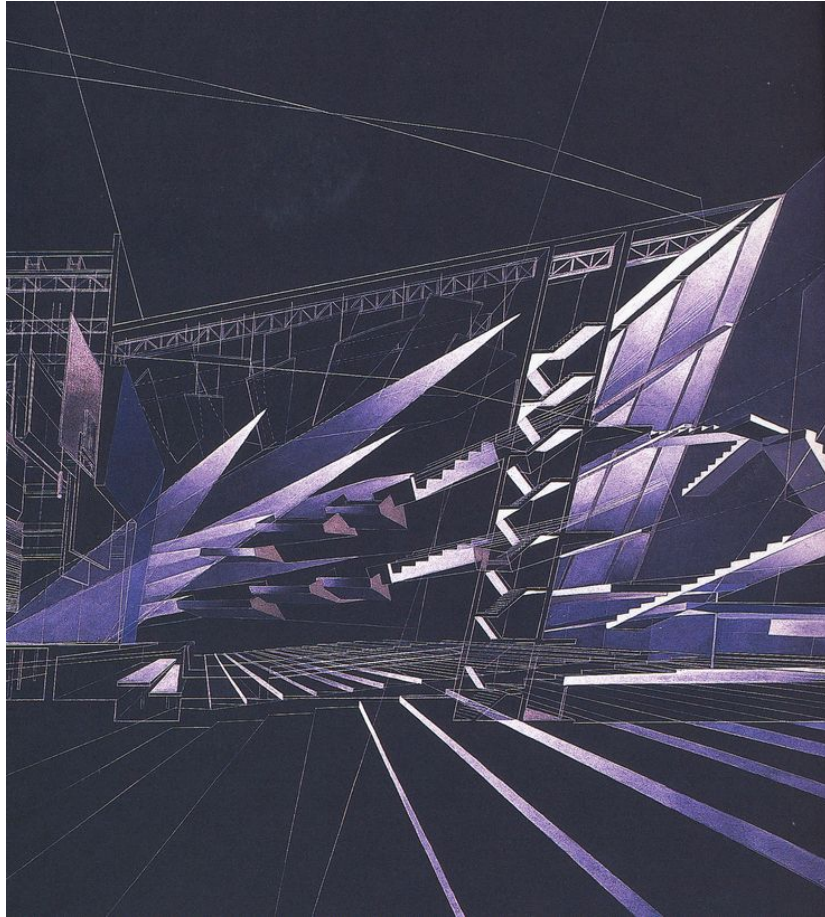
Zaragoza Bridge Pavilion. Photograph: Zaha Hadid Architects



**Bridge Pavilion Zaragoza by Zaha Hadid. 2008**

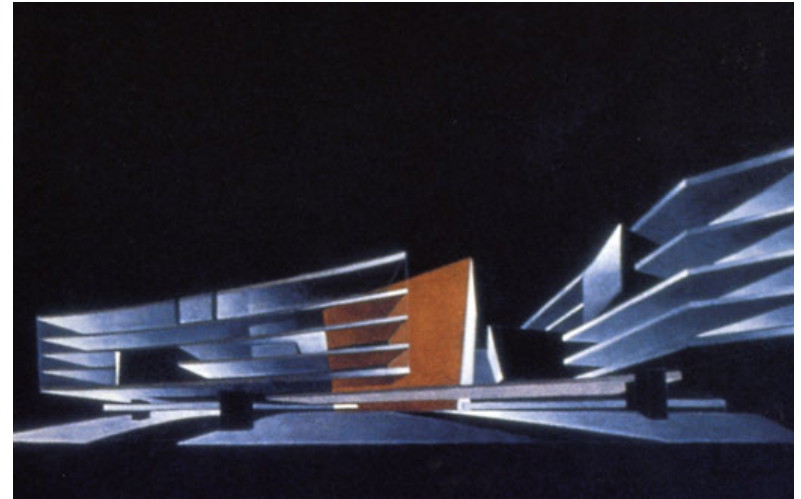
Selected international architecture. 1990's until present.

## Cardiff Bay Opera house.



Cardiff Bay Study painting

Zaha Hadid.

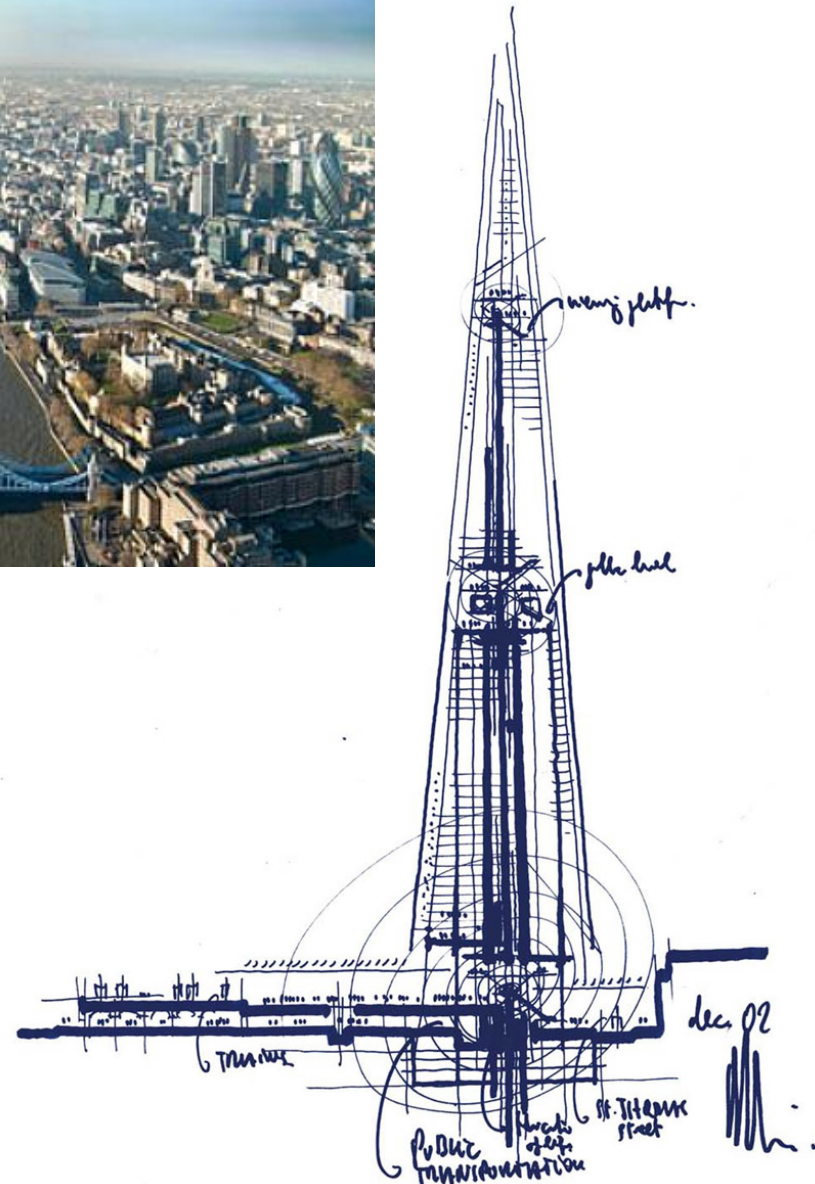


Vitra fire station, Baden-Wuerttemberg, Weil am Rhein, Germany Photograph: LOOK Die Bildagentur der Fotogra/Alamy



Selected international architecture. 1990's until present.

**Renzo Piano**  
**The Shard**  
**London.**  
**2013**



Selected international architecture. 1990's until present.



## Renzo Piano Jean-Marie Tjibaou Cultural Centre



Selected international architecture. 1990's until present.



**Renzo Piano Jean-Marie Tjibaou Cultural Centre**



Selected international architecture. 1990's until present.

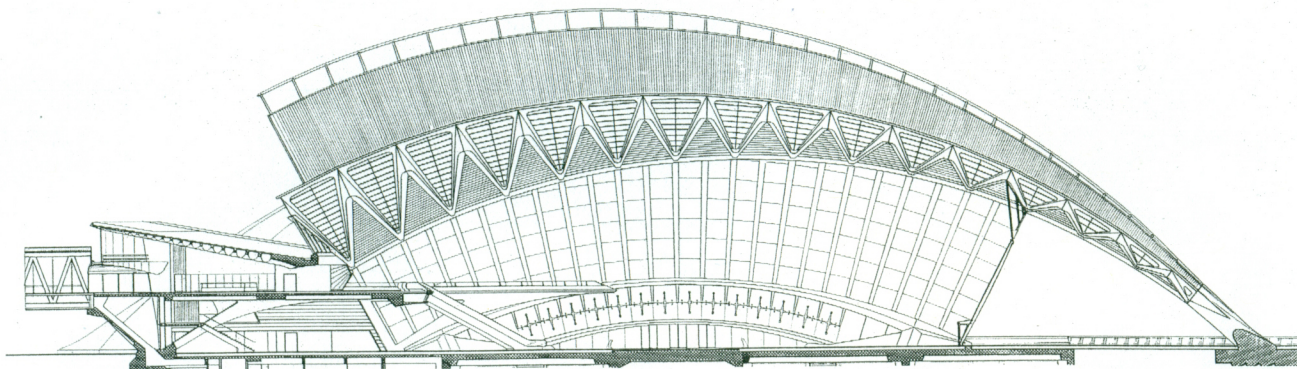
## Renzo Piano Jean-Marie Tjibaou Cultural Centre



Selected international architecture. 1990's until present. Santiago Calatrava



Selected international architecture. 1990's until present. Santiago Calatrava





Selected international architecture. 1990's until present. Santiago Calatrava

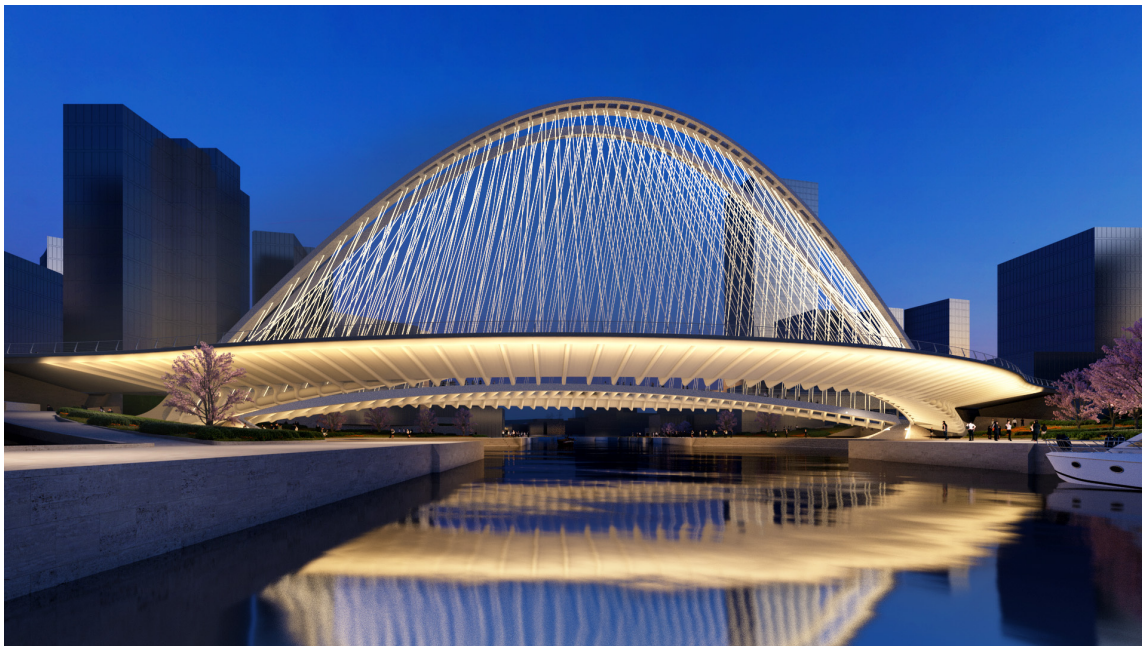
Samuel Beckett Bridge ,  
Dublin. 2007



Florida Polytechnic by  
Calatrava

Selected international architecture. 1990's until present. Santiago Calatrava

Xianbi Bridge. Calatrava ,  
one of three designed for  
Chinese city of Huashan



Selected international architecture. 1990's until present. Santiago Calatrava



Selected international architecture. 1990's until present. Kengo Kuma



Yusuhara wooden bridge museum.



Selected international architecture. 1990's until present.



Selected international architecture. 1990's until present.



**Rozak House. 2002**  
**N Territories , Australia**  
**Adrian Welke , Troppo architects**

Selected international architecture. 1990's until present.



**Rozak House. 2002**  
**N Territories , Australia**  
**Adrian Welke , Troppo architects**



## Topic recap and societal context discussion.

From all the preceding slides and photographs, use the notes that you took during the class lecture and discussion to make a list of the following -:

The major factors that architects take into account in designing a modern building for the 21<sup>st</sup> Century .

What you think is the societal context in which these works were produced ?

What technological trends or advances have been made in these periods and influenced the building designers in coming up with their various distinctive proposals?

It is suggested you do this exercise as a group and come up with answers that everyone has contributed too and agrees with.