

# ISLANDS AND CONTOURS

geography and contour lines



Kauai, Hawaii *Shutterstock*





Coddle Island, Nova Scotia, is a 192-acre island near power and water access

[https://img.i-scmp.com/cdn-cgi/image/fit=contain,width=1098,format=auto/sites/default/files/styles/1200x800/public/d8/images/methode/2019/11/19/e843c044-0a74-11ea-afcd-7b308be3ba45\\_image\\_hires\\_124609.jpg?itok=cQhAZfrd&v=1574138776](https://img.i-scmp.com/cdn-cgi/image/fit=contain,width=1098,format=auto/sites/default/files/styles/1200x800/public/d8/images/methode/2019/11/19/e843c044-0a74-11ea-afcd-7b308be3ba45_image_hires_124609.jpg?itok=cQhAZfrd&v=1574138776)





Rangitoto Island

Waitemata Harbour

Tāmaki Makaurau







Motuihe Island

Waitemata Harbour

Tāmaki Makaurau



<https://geomapspublic.aucklandcouncil.govt.nz/viewer/index.html>



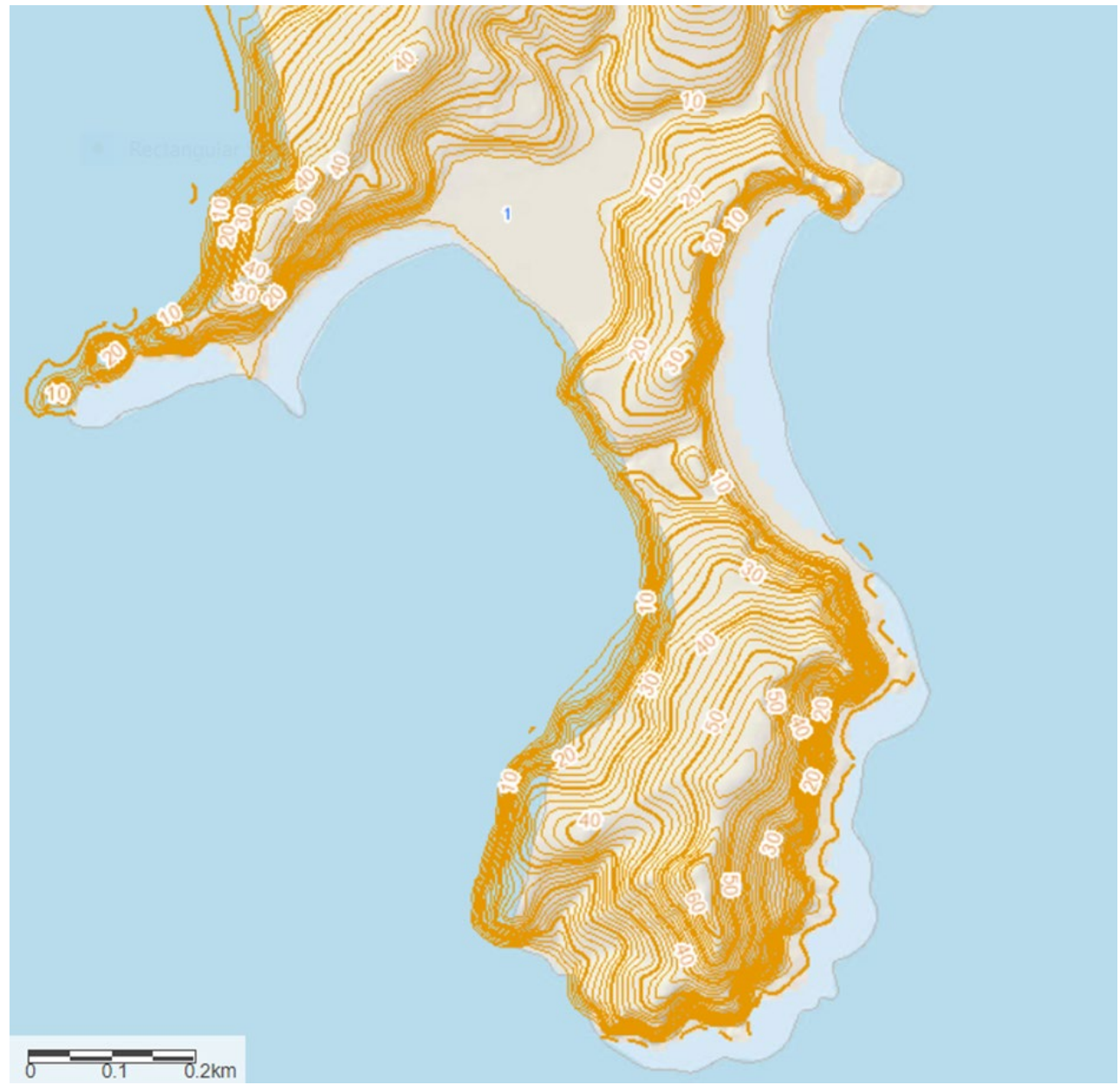


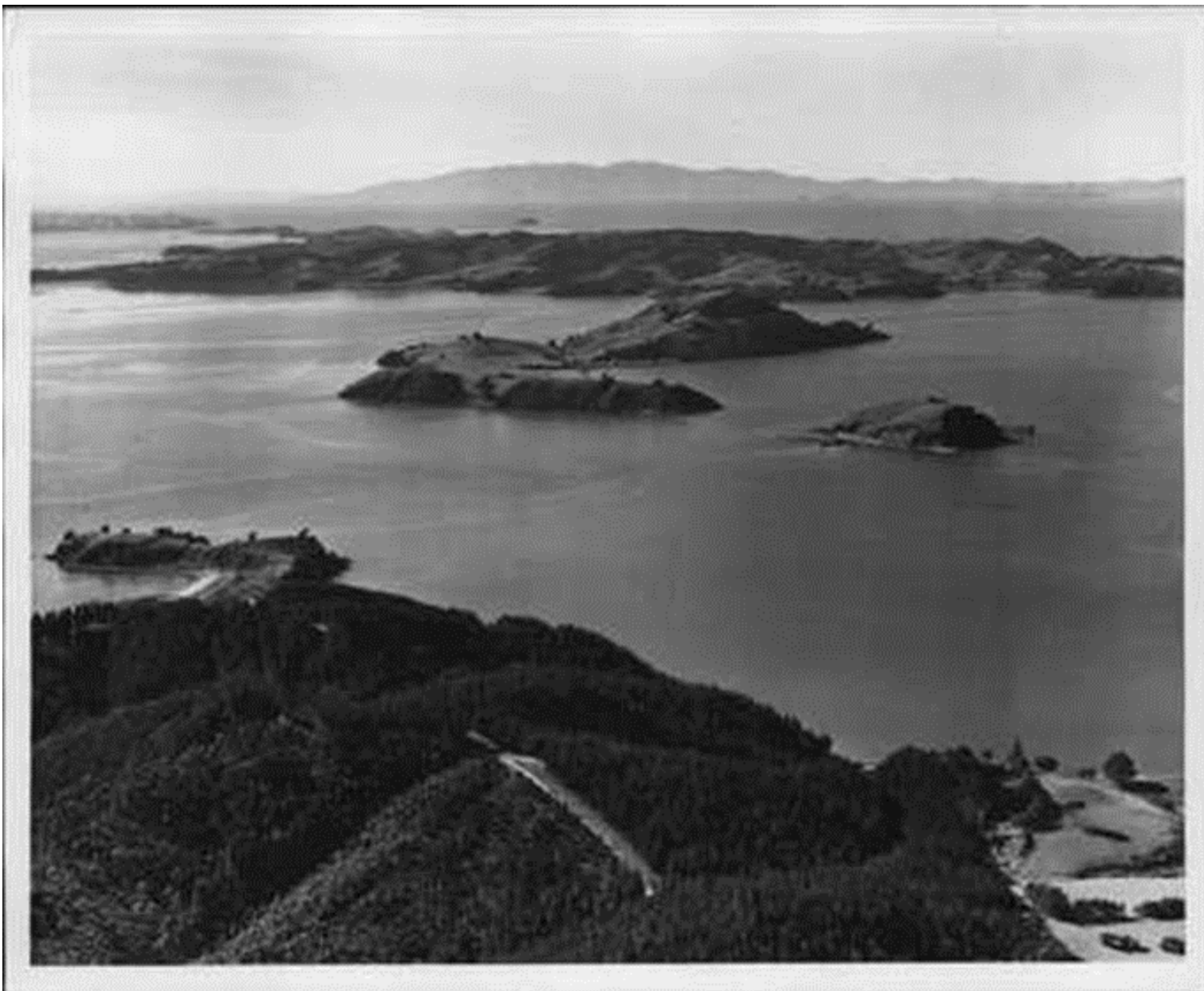
Rotorua Island

Waitemata Harbour

Tāmaki Makaurau







Pakihi Island

Waitemata Harbour

Tāmaki Makaurau

[https://www.aucklandmuseum.com/collection/object/am\\_library-photography-63445](https://www.aucklandmuseum.com/collection/object/am_library-photography-63445)





<https://geomapspublic.aucklandcouncil.govt.nz/viewer/index.html>