

THRESHOLDS

the parti diagram

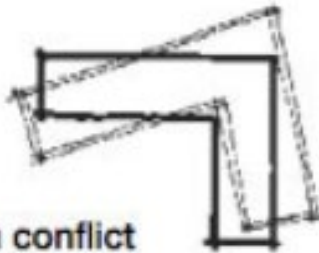
exploring circulation through plan and section



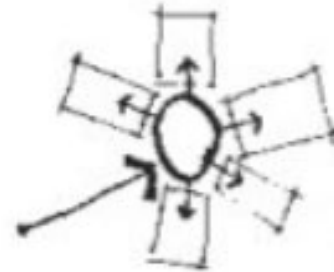
Odd shapes intrude on "pure" space



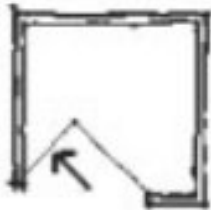
Finger poking into the woods



L's in conflict



Radial scheme with missing spoke



Box subtracted



Core segregates public-private

15/ PARTI

"A *parti* is the central idea or concept of a building"

101 Things I Learned in Architecture School - Matthew Frederick, The MIT Press @2007

BAN

Rectangular Site



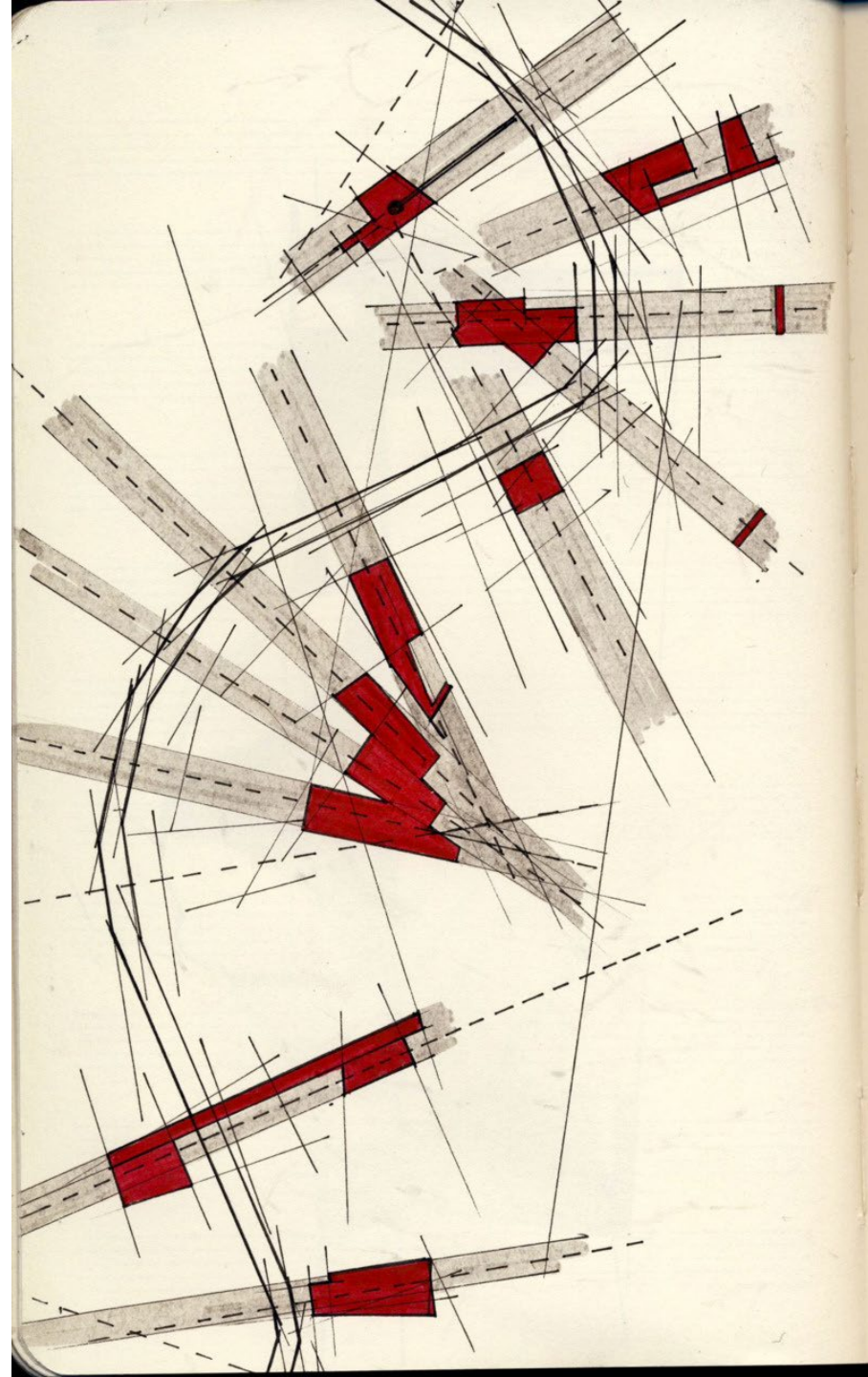
ARCHIPLAN

© FEDERICO BABINA

A **parti** diagram shows a concept in its simplest form. It focuses on the key structural and relational or spatial features of an idea. The term Parti refers to the concept or primary organizing idea of a design.

Federico Babina analysis of Shigeru Ban plan

<https://nz.pinterest.com/pin/567242515551790986/>

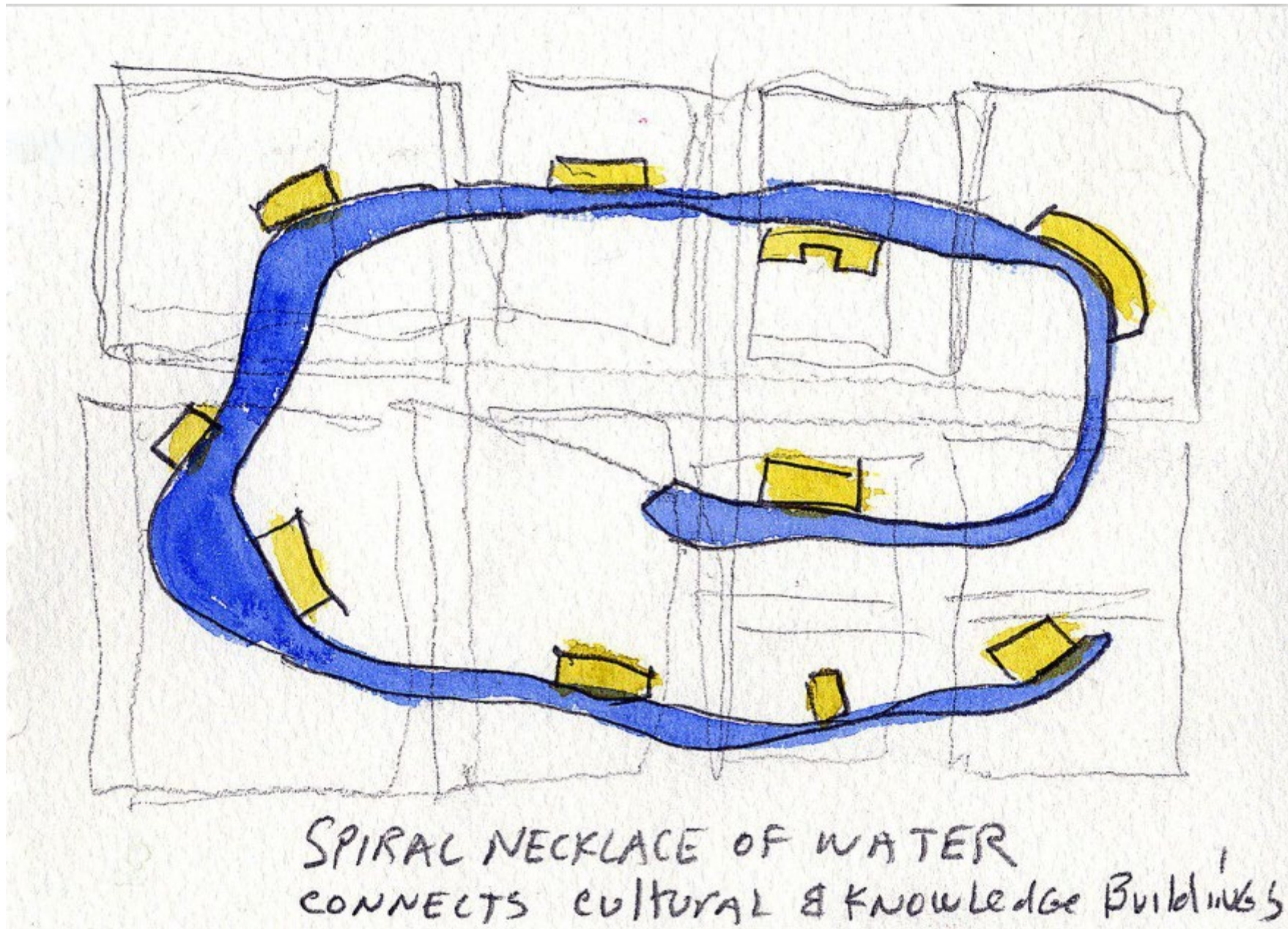


<https://conceptsketch.tumblr.com/post/31575753316>

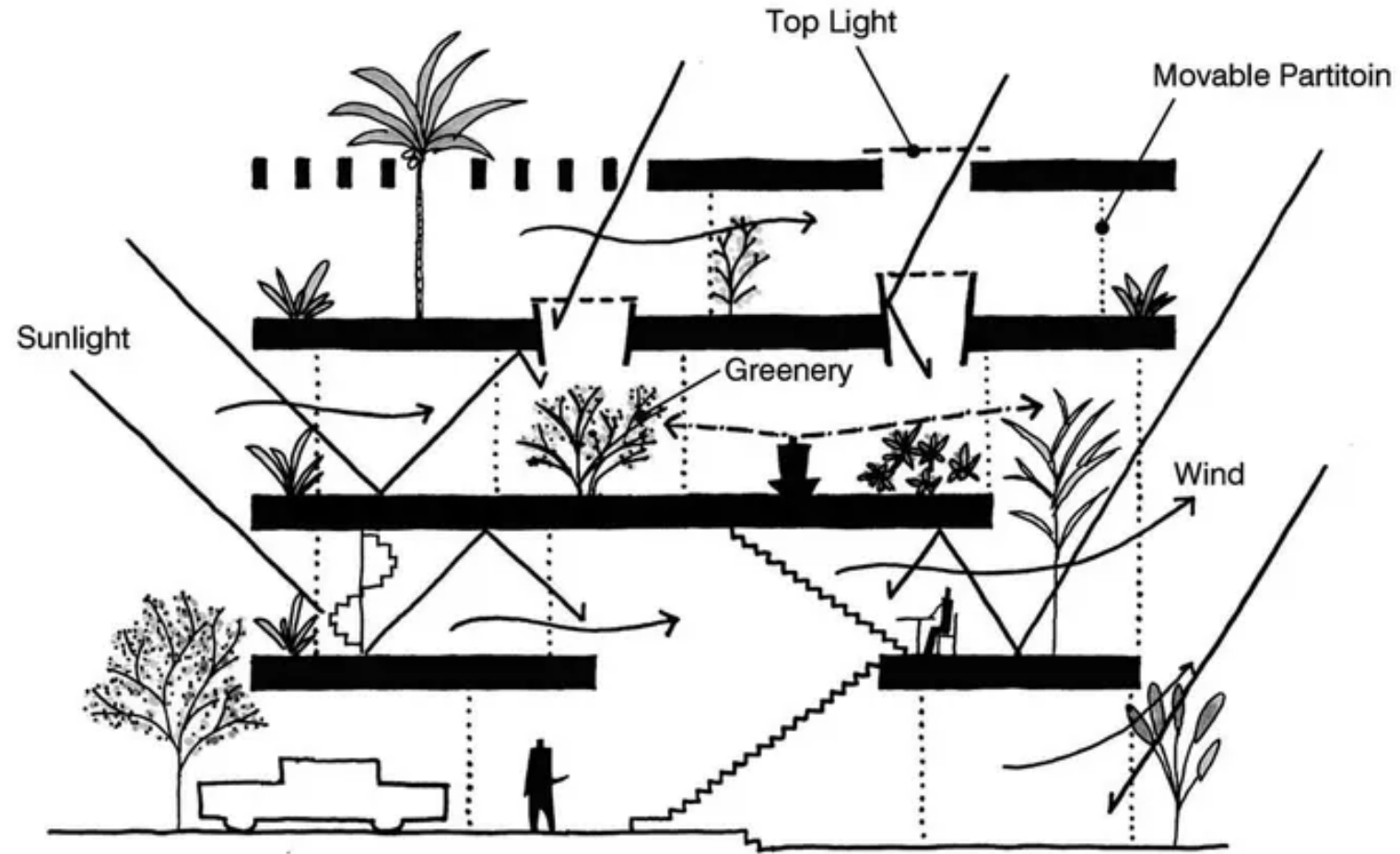
Rectangular S



Bologna Civic Offices, Mario Cucinella Architects, Parti diagram



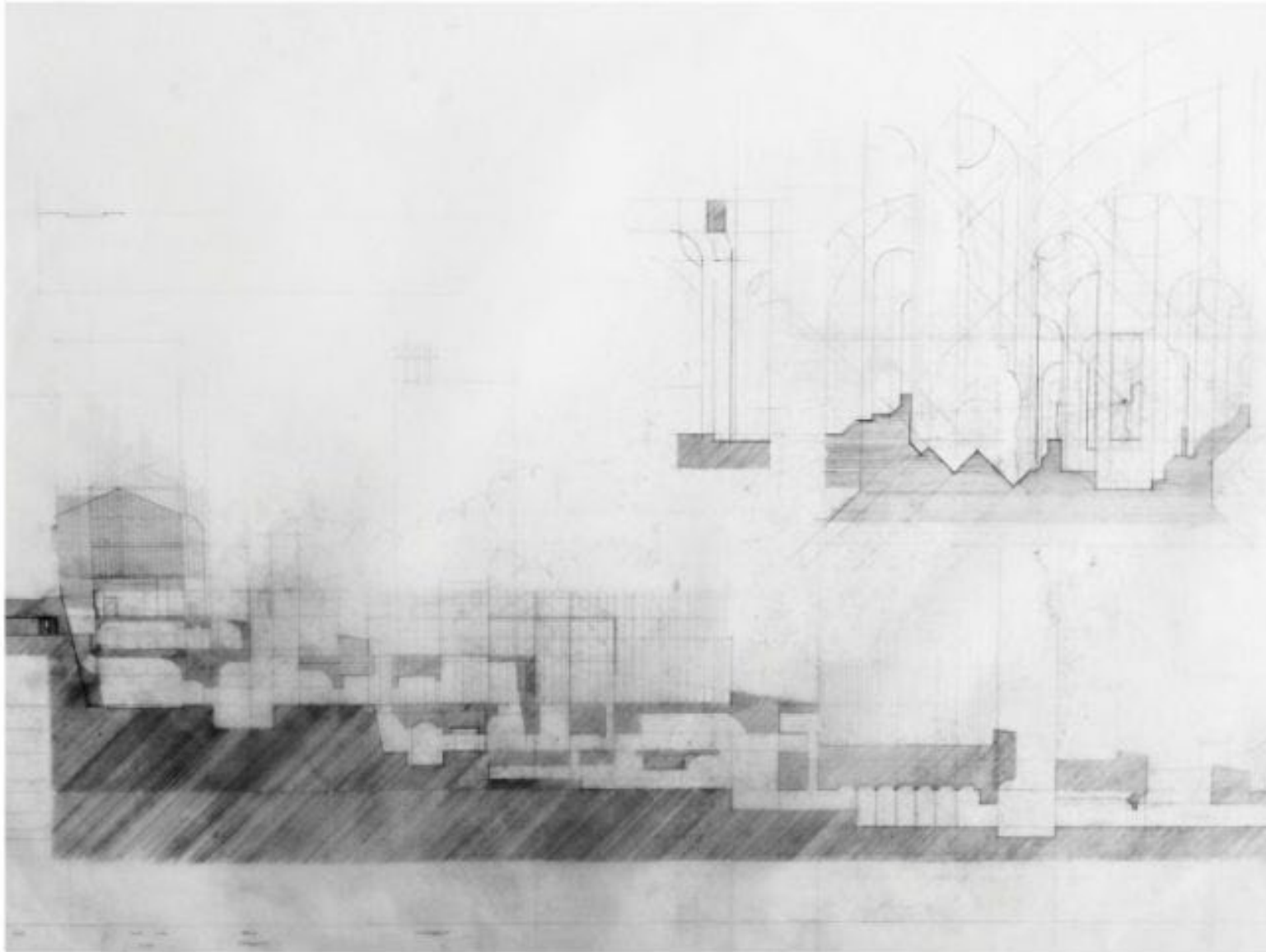
SPIRAL NECKLACE OF WATER
CONNECTS CULTURAL & KNOWLEDGE BUILDINGS



Diagram

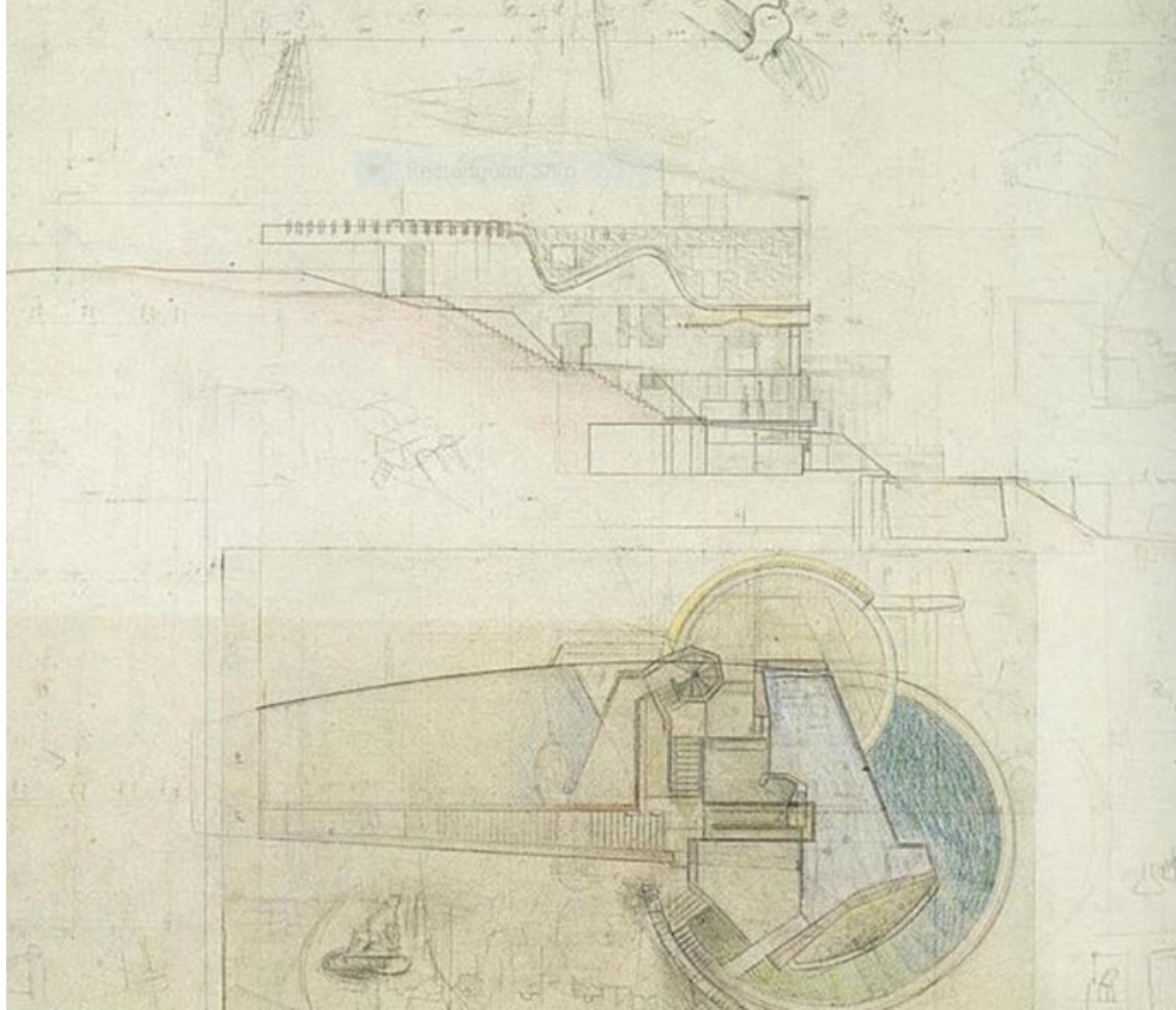
Anh House / S+Na. – Sanuki + Nishizawa architects

<https://www.archdaily.com/453719/anh-house-s-na-nil-sanuki-nishizawa-architects>



Studying sectional development and circulation in relation to ground –
The Highgate Wake House –
KooZA/rch

<https://www.koozarch.com/interviews/the-highgate-wake-house/>

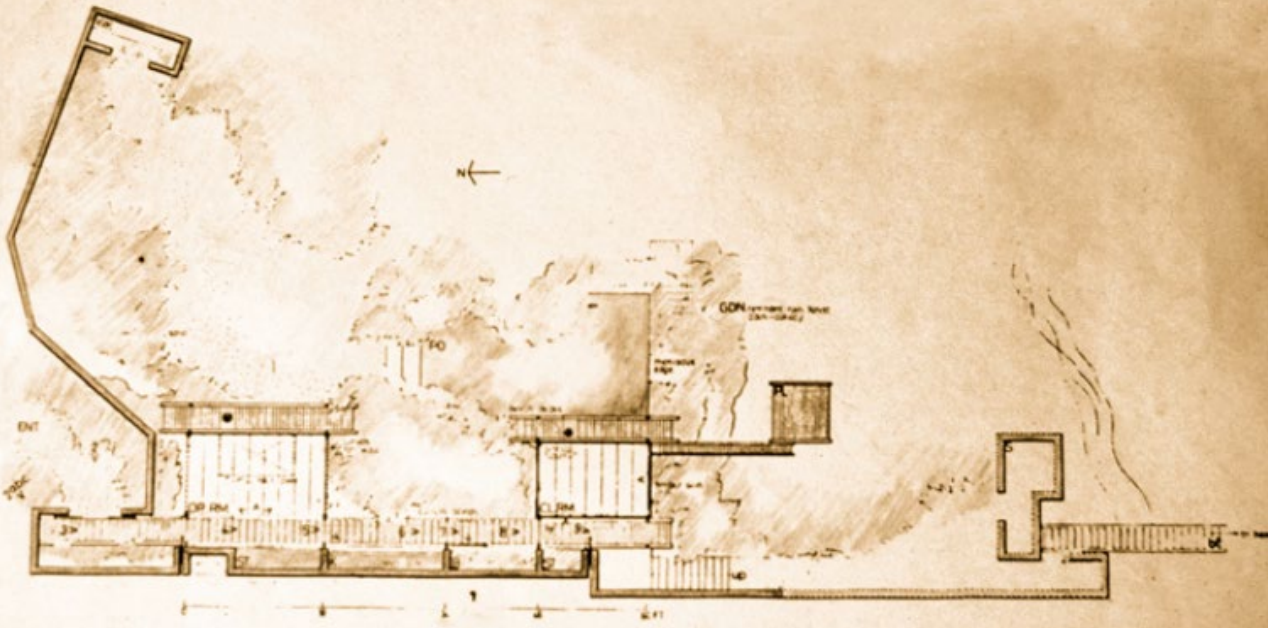
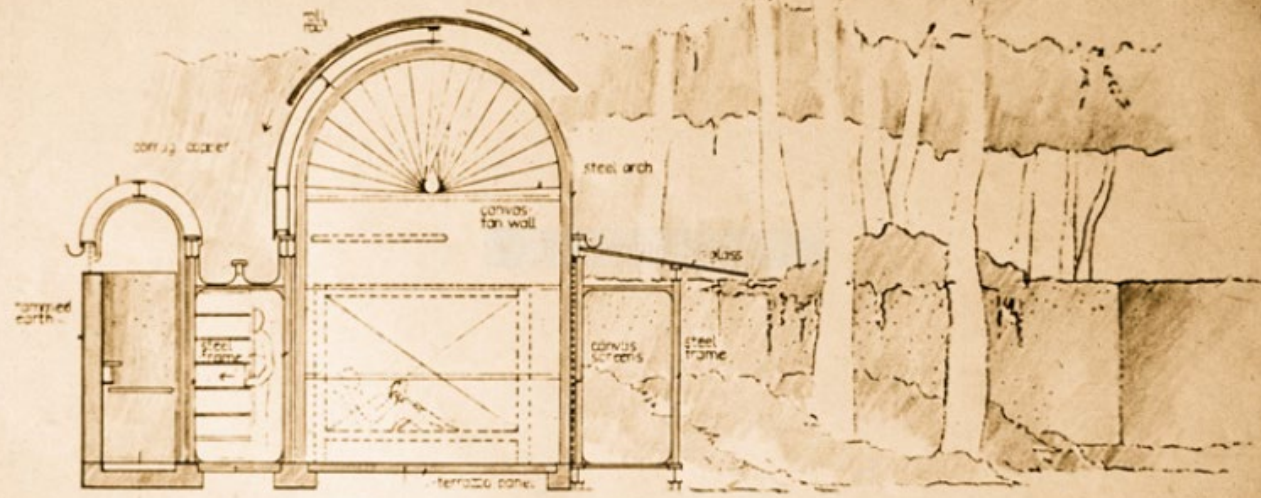


Carlo Scarpa

<https://www.pencil.com/museum.php?show=11070&p>

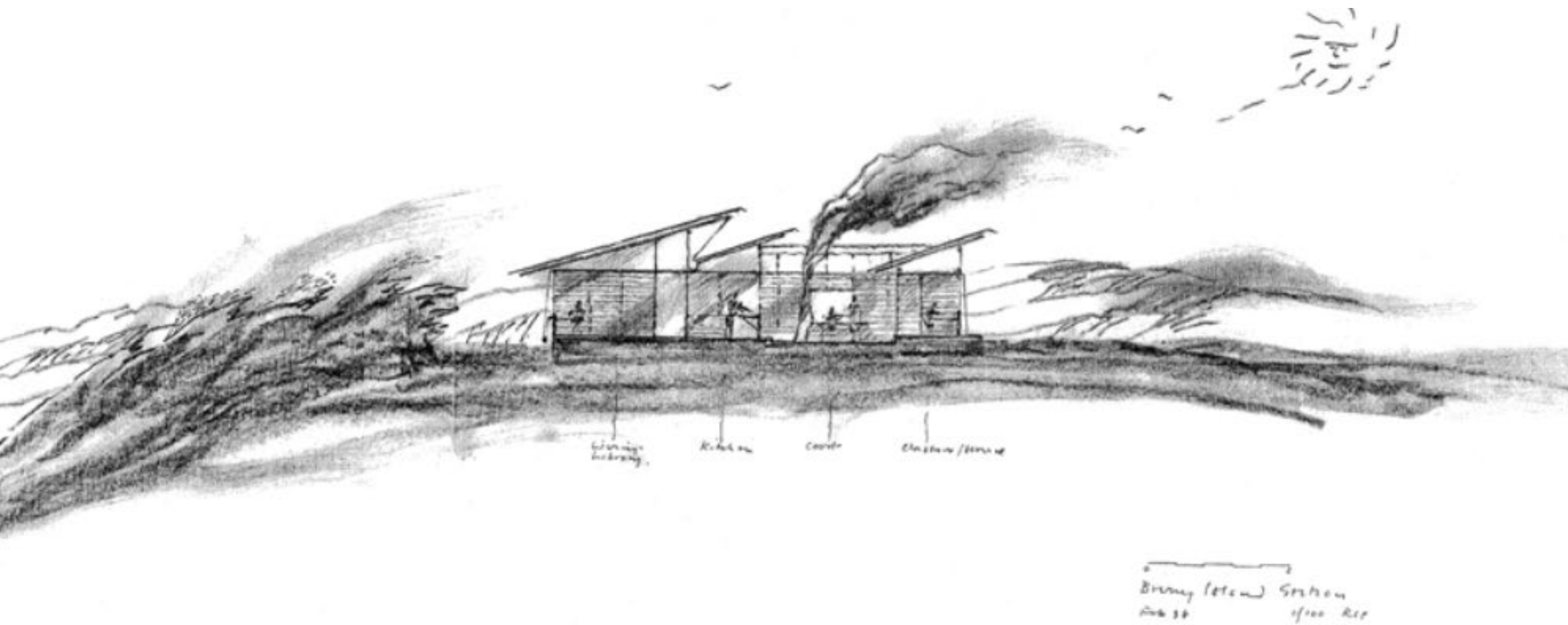
=

Sketching and testing ideas in plan and section to communicate and record thinking are an essential skill in the architect's tool box

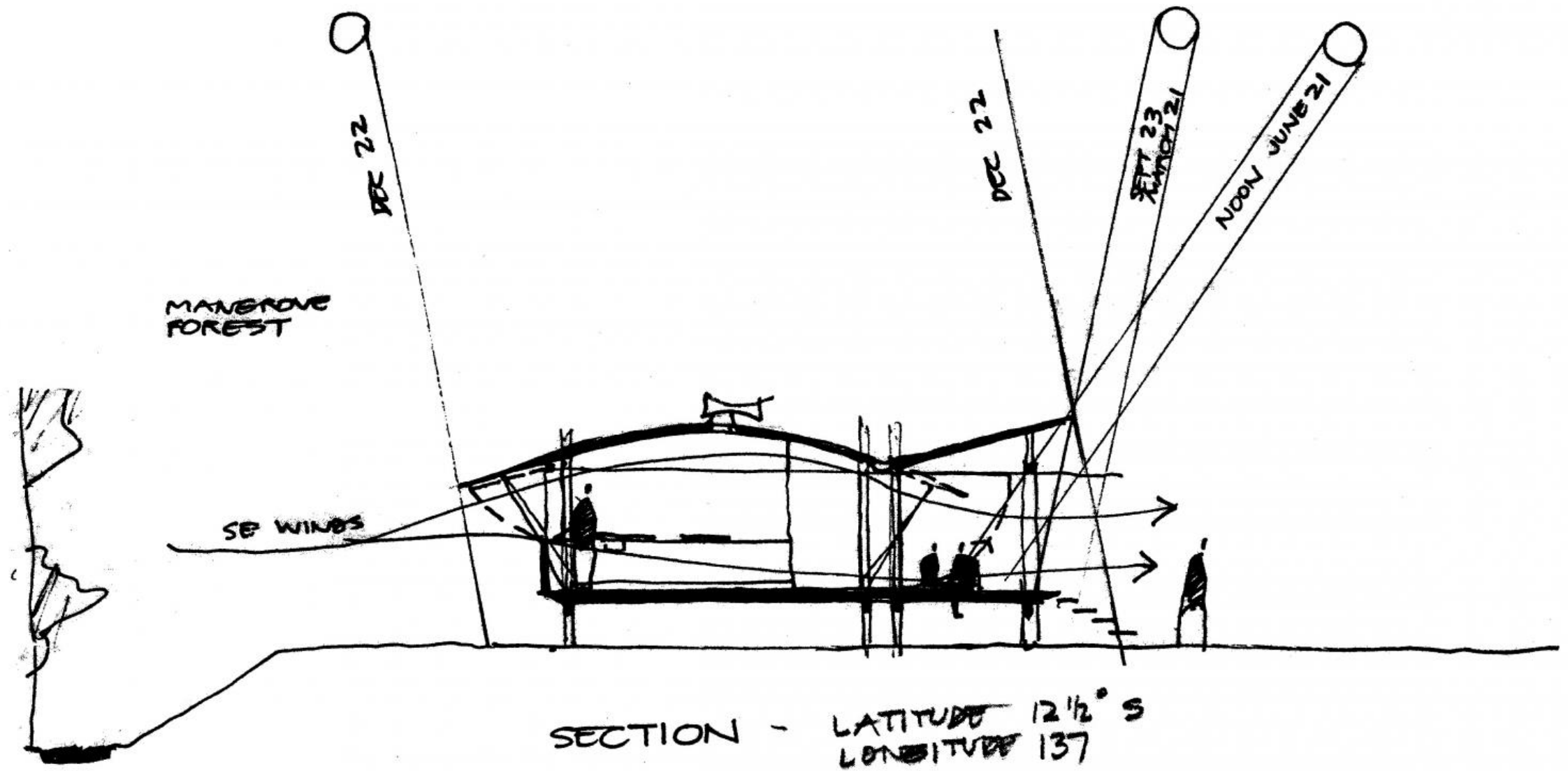


*Palm Garden House, 1976
Richard Leplastrier*

<https://panfilo.co/2013/12/07/richard-leplastrier/>



Cloudy Bay Retreat, Richard Leplastrier
<https://panfilo.co/2013/12/07/richard-leplastrier/>

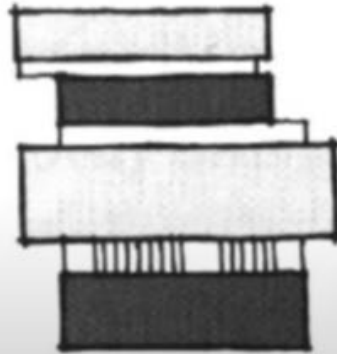


Sections sum up Glenn Murcutt's climatic interests and construction methods: in the sketch, the Marika-Alderton house <https://arquitecturaviva.com/articles/llamame-glenn-3>

Use your *parti* as a guidepost in designing the many aspects of a building.



Stair across layers



Stair parallel to layers

Riproduci (k)



5:18 / 18:31



Let's Talk About Parti Diagrams - Vol. 02 | feat. Seattle Library and Chichu Art Museum

<https://www.youtube.com/watch?v=8xBxGw-UcA>