

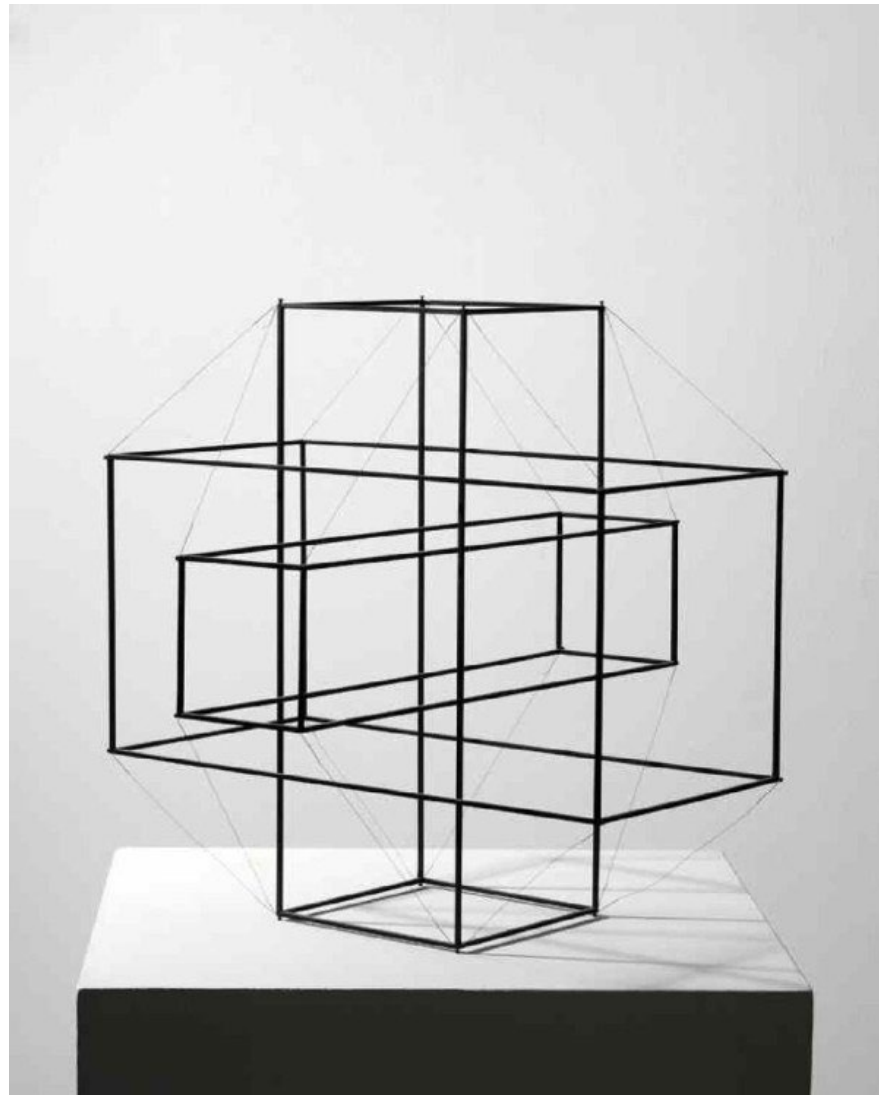
MATERIALITY

3D – 2D – 1D modelling and composition
concepts and space

1D models – linear elements



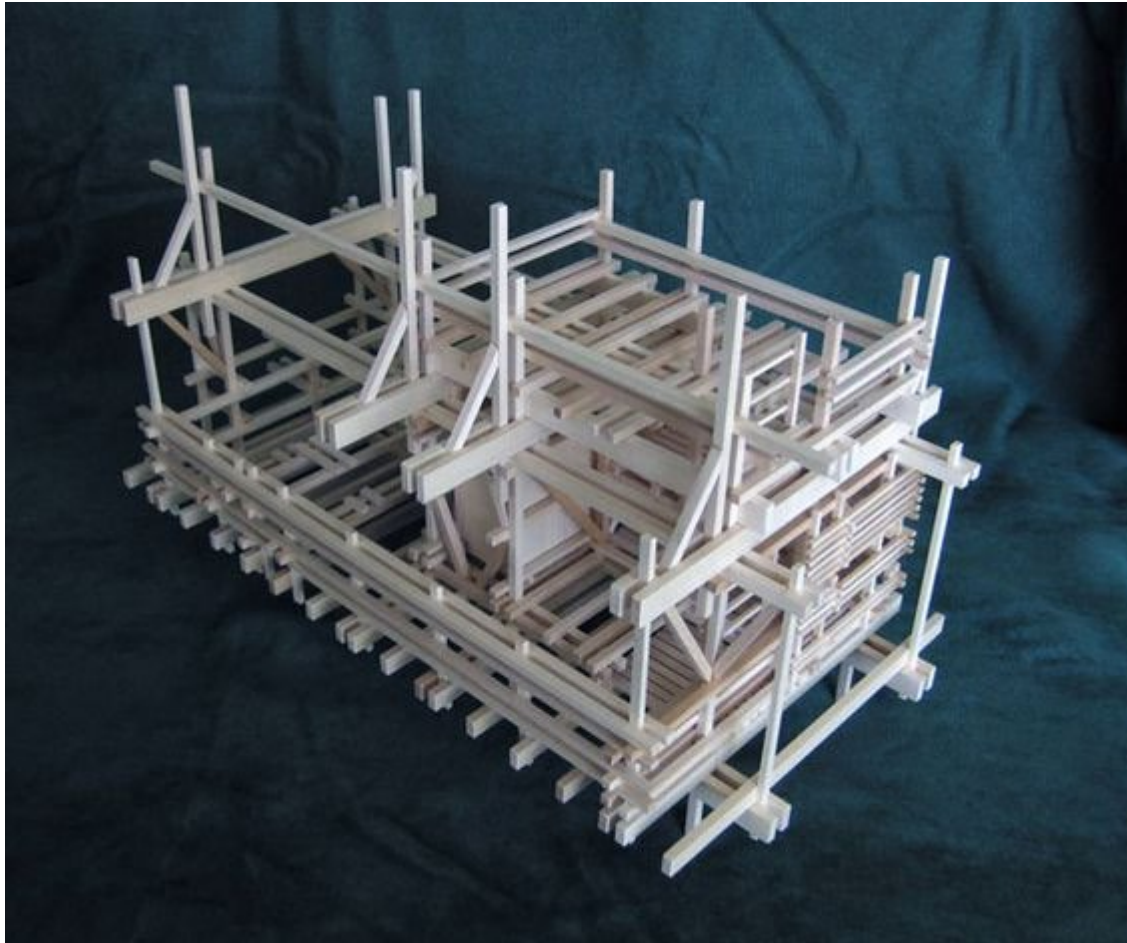
<http://pr2011.aaschool.ac.uk/students/Andrew-Hum>



Norman Dilworth
Structure Series 2A No. 2, 1972
Sculpture, Laurent Delaye Gallery
<https://trendland.com/art-paris-2014/>

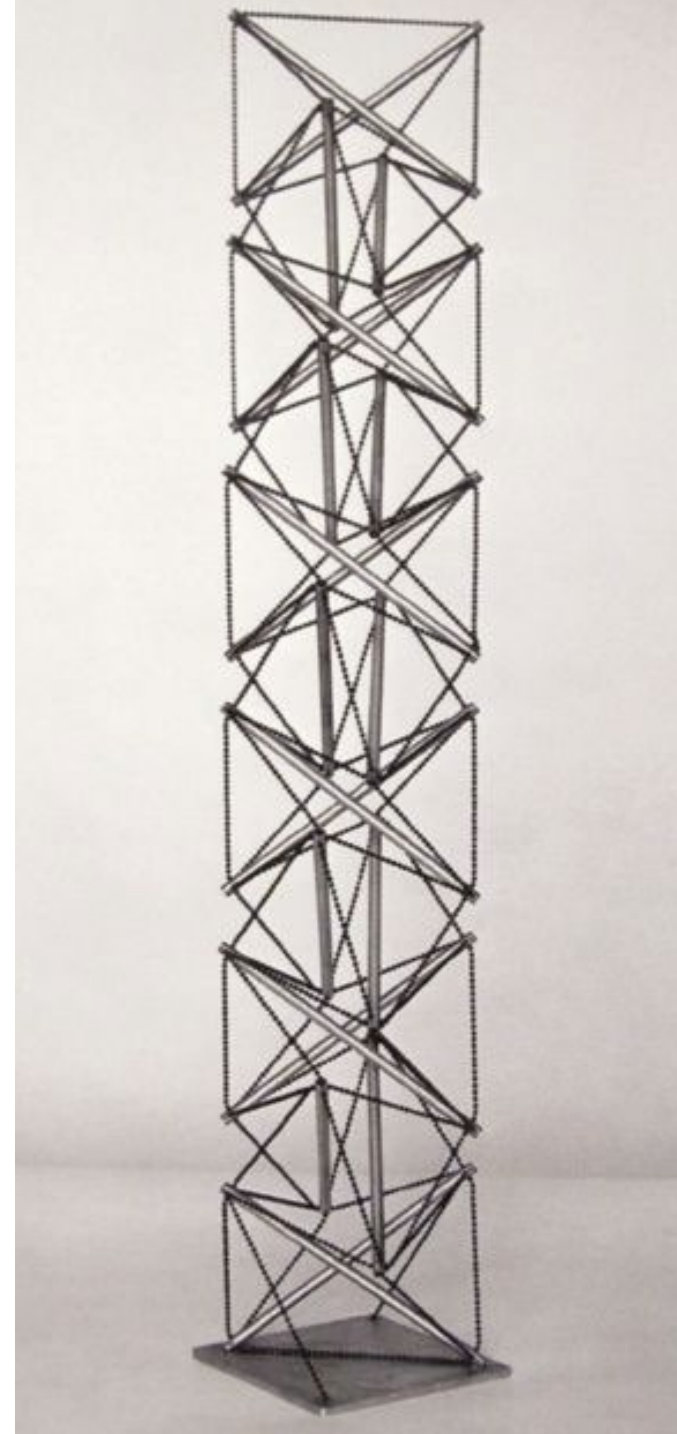


Karey Helms – kinetic structures and material exploration
<https://www.kareyhelms.com/kinetic-structures/>



SHELTER FROM THE STORM, architectural model in basswood
Konotopia

<https://www.pinterest.nz/pin/216595063300710838/>



Kenneth Snelson "X-Column" 1959

<http://mondo-blogo.blogspot.com/2012/01/genius-of-kenneth-snelson.html?m=1>



RAMP STUDY MODEL by [kilsue](#)

May 4, 2008, 5:31 pm

Filed under: [Kil Sue](#)

<https://aainter3.wordpress.com/2008/05/04/ramp-study-model/>

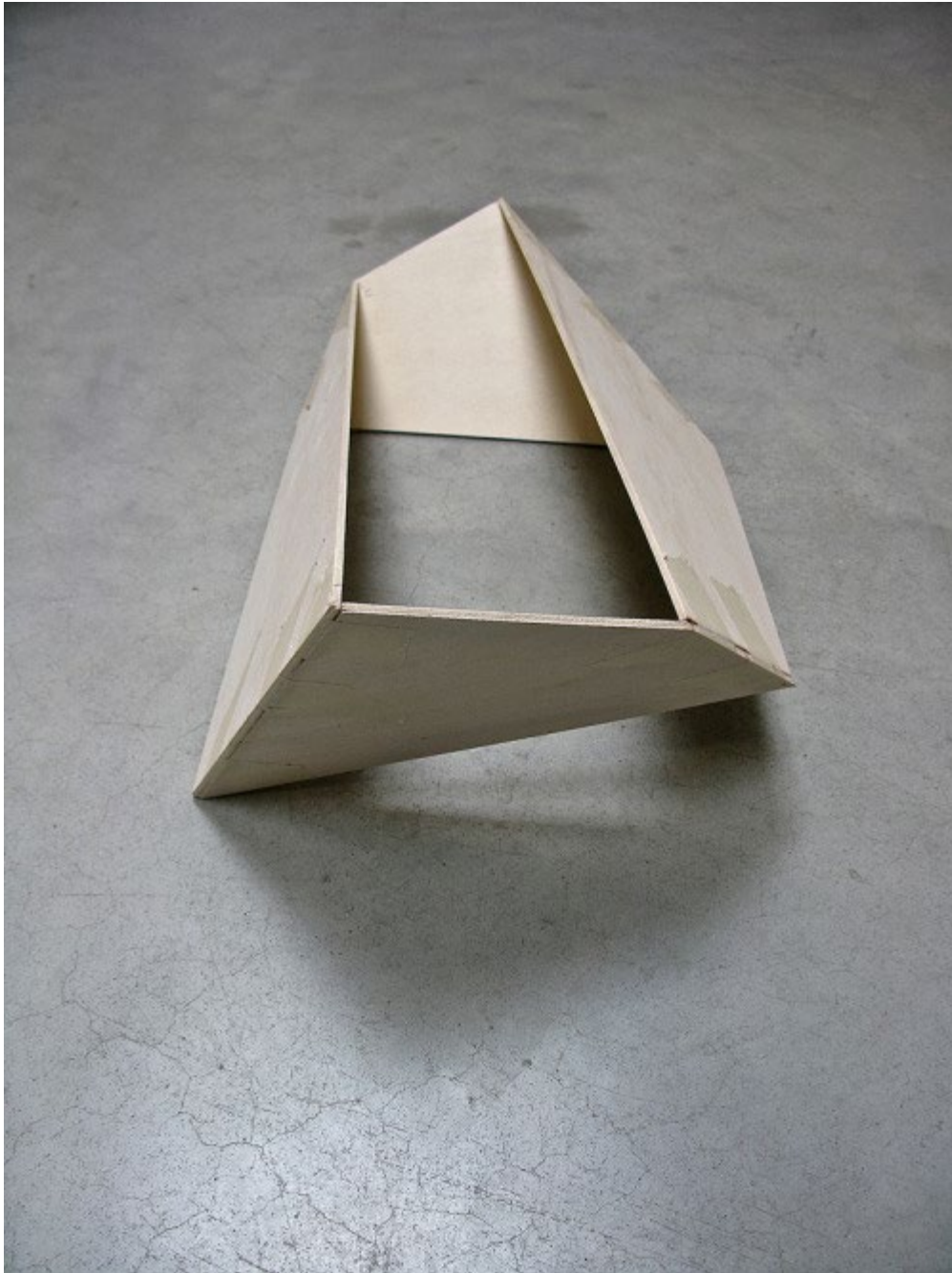


Peter Zumthor, Architectural Models

<https://au.phaidon.com/agenda/architecture/articles/2012/june/26/peter-zumthor-exclusive-look-at-architecture-models/>

<https://au.phaidon.com/resource/archcvr.jpg>

2D models – planar elements

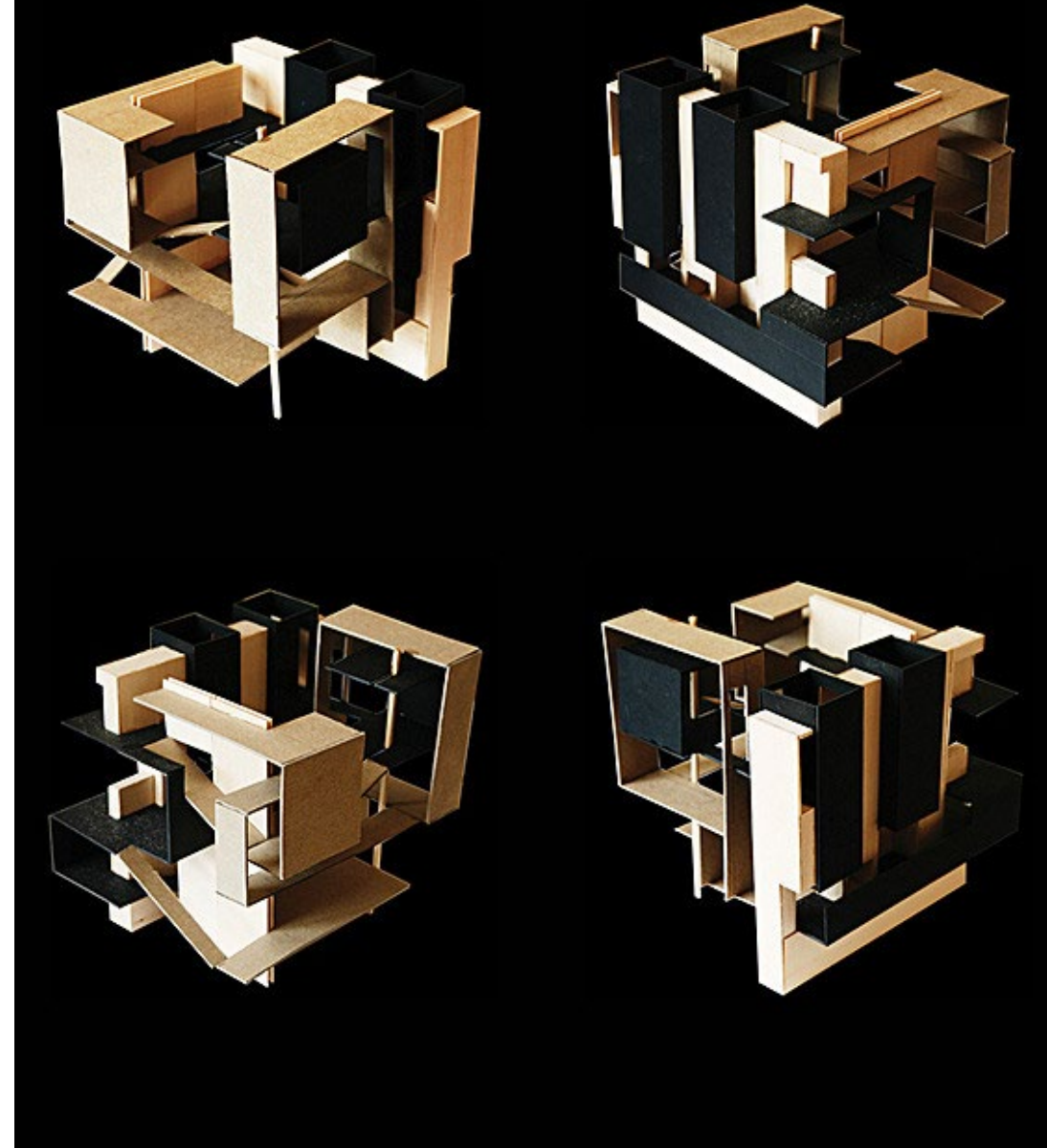


<https://nicoonmars.tumblr.com/post/44655004542/studie-in-hout-by-simon-oud>



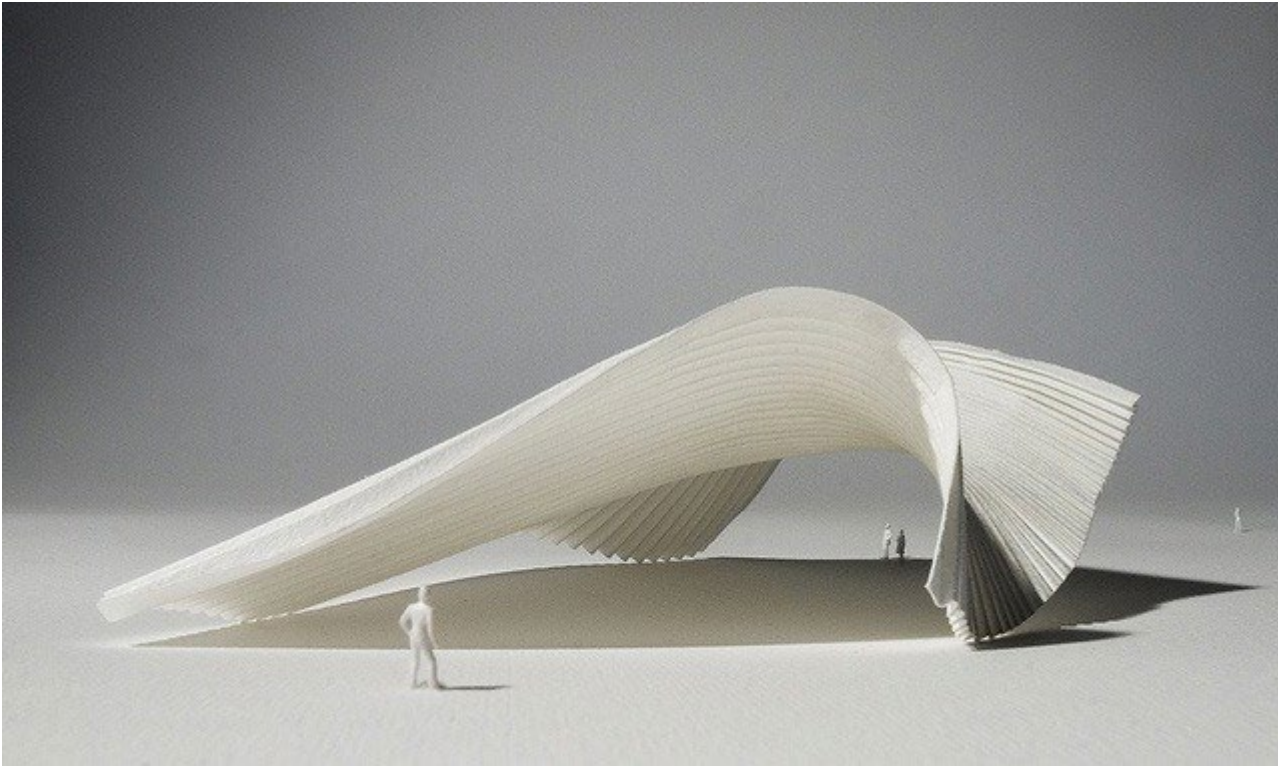
Chris Morrow - Summer Semester 2005

http://www.verladams.com/gallery/teaching/pre-architecture/primary_elements_II/primary_elements_II_1.html



A Public Archives for Venice, An Addition to Le Corbusier's (Unbuilt) Venice Hospital - Hai Chi

https://36.media.tumblr.com/3289010b18adef94d70bf103fb2e4c71/tumblr_nb5c8v1FKW1qm4bu8o2_1280.jpg



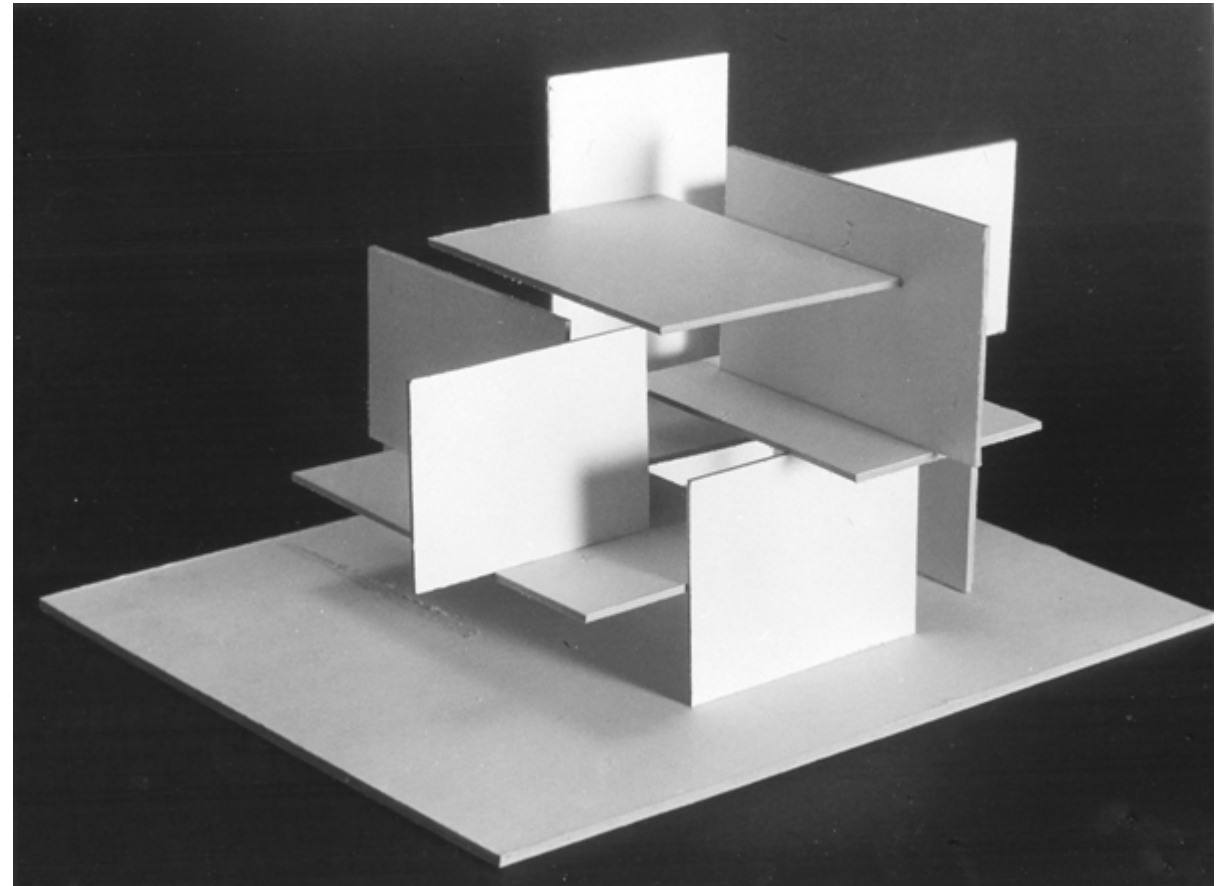
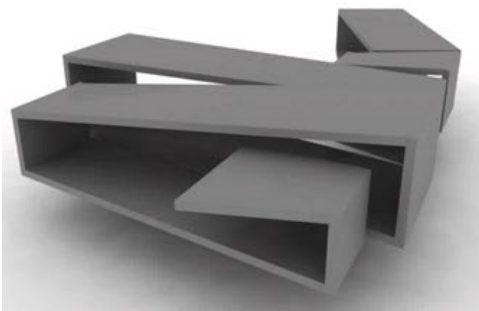
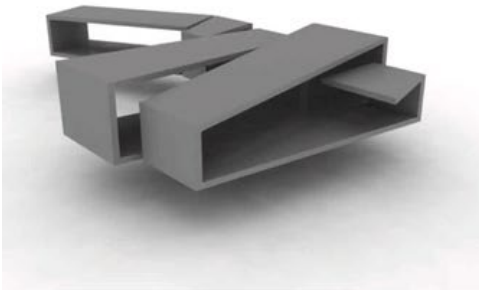
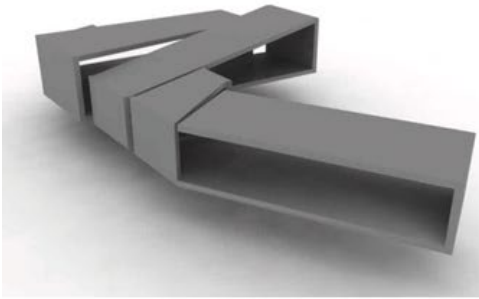
[Architectural Model by Richard Sweeney](https://conceptmodel.tumblr.com/post/61811610549/fabriciomora-architectural-model-by-richard)

<https://conceptmodel.tumblr.com/post/61811610549/fabriciomora-architectural-model-by-richard>



Angela Glajcar is a German artist who creates sculptures from torn paper and plastic

<https://i.pinimg.com/600x/e7/ed/d5/e7edd577ff52408c0a09b3738f106c90.jpg>



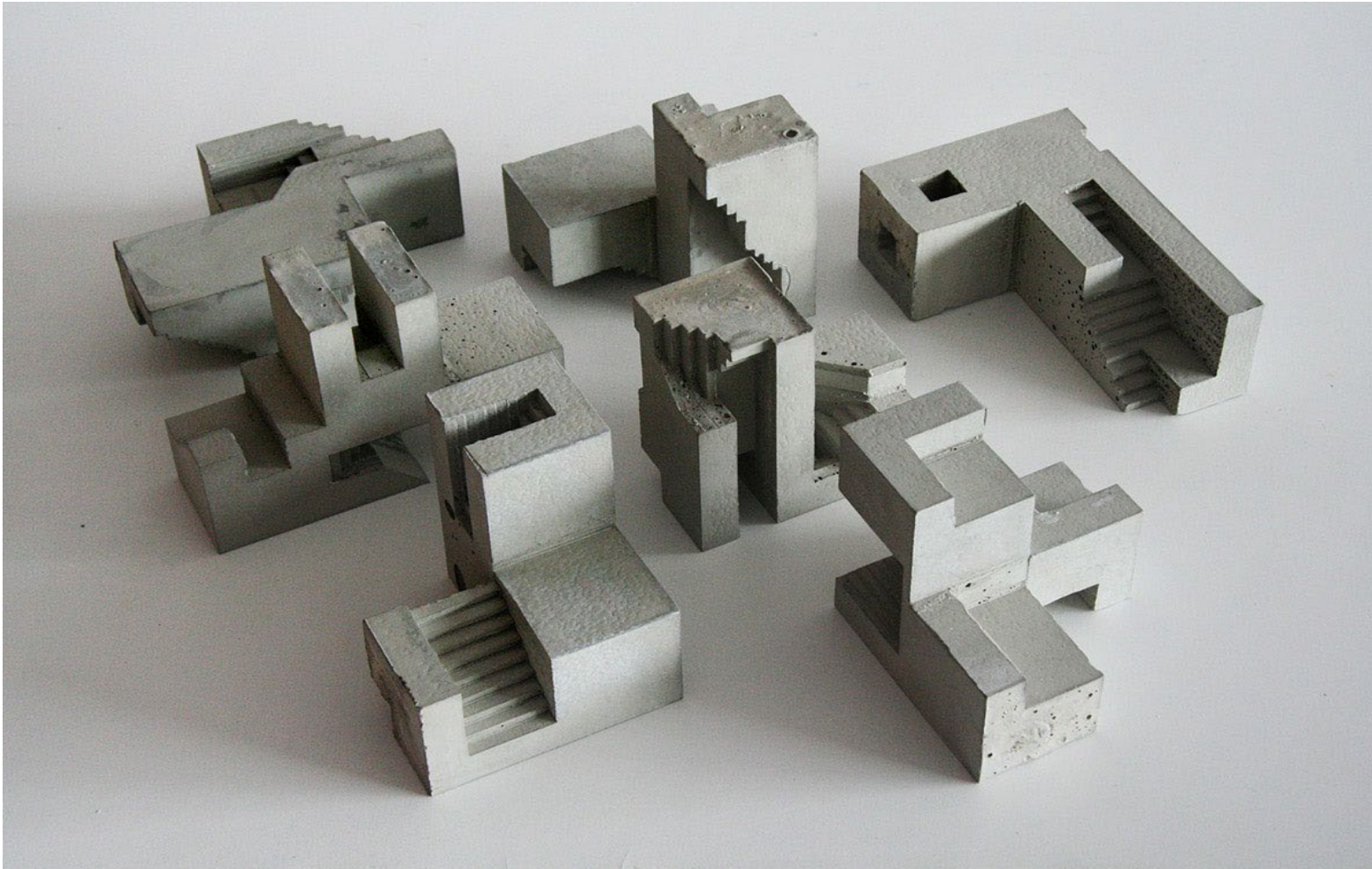
Hollywood House
https://www.archdaily.com/15270/hollywood-house-why-architecture?ad_medium=gallery

https://images.adsttc.com/media/images/55e6/0ebb/4d8d/5d39/6a00/000d/slideshow/1216162802_ribbon-vertical.jpg?1441140391

Henk van Trigt
beeldend kunstenaar
<http://henkvantrigt.nl/galerie/photo/198>

<https://www.google.nl/search?q=ruimtelijke+constructies+in+de+kunst&tbm=isch&imgsrc=DMmktkPxXxy1kM:&cad=h>

3D models – mass models



Concrete Models - conceptual

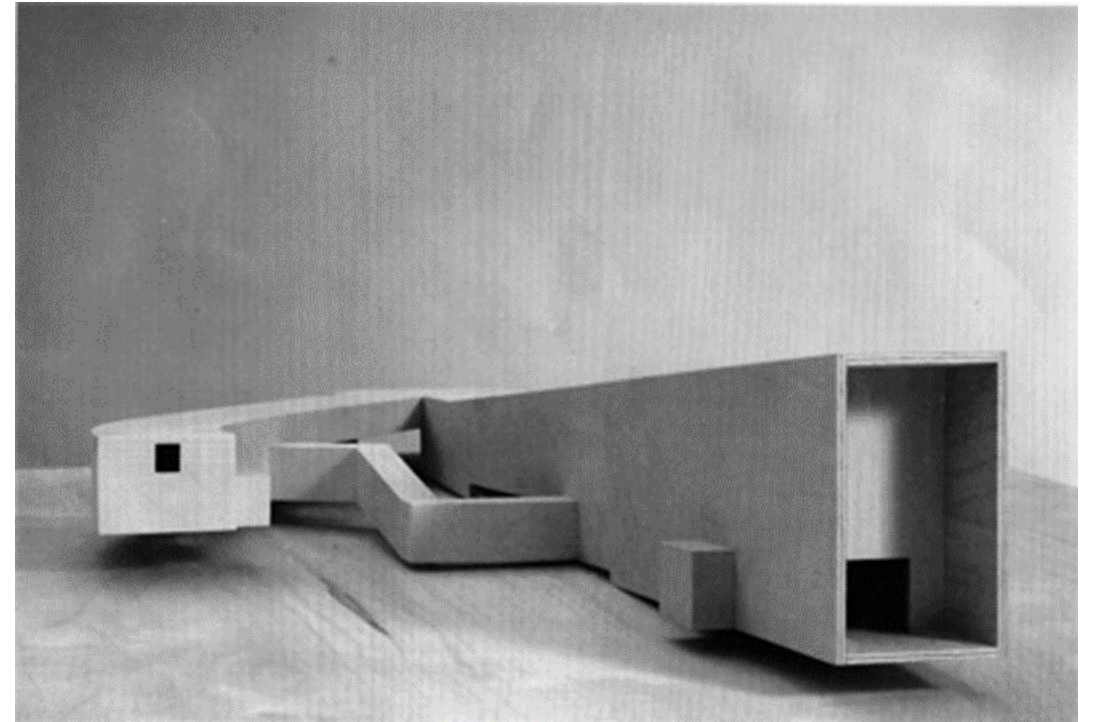
<https://www.archisoup.com/architecture-concept-models>



Troll Wall Restaurant and Visitors Centre

https://www.archdaily.com/162679/trollwall-restaurant-and-service-rra/501569c128ba0d02f00011e8-trollwall-restaurant-and-service-rra-model?next_project=no

http://www.verladams.com/gallery/teaching/pre-architecture/primary_elements_II/primary_elements_II_1.html



[causalocuta](https://thomortiz.tumblr.com/post/35631198822/causalocuta-pablo-picasso-museum-model): Pablo Picasso Museum (model) - Alvaro Siza (via [lecroqui](https://www.lecroqui.com/))
<https://thomortiz.tumblr.com/post/35631198822/causalocuta-pablo-picasso-museum-model>



For the Duchess Estate's model, Allied Works set cast resin, acrylic, and brass atop charred pine. Image via fastcodesign.com.

<https://archinect.com/news/article/147822216/the-designs-of-allied-works-a-counter-proposal-to-the-age-of-instant-image-making>



Benoist Van Borren
Photo by [Alice Novotny](#) on [flickr](#)

Final Wooden House, Sou Fujimoto Architects



<https://images.adsttc.com/media/images/5010/092a/28ba/0d42/2200/060b/slideshow/stringio.jpg?1413926145>

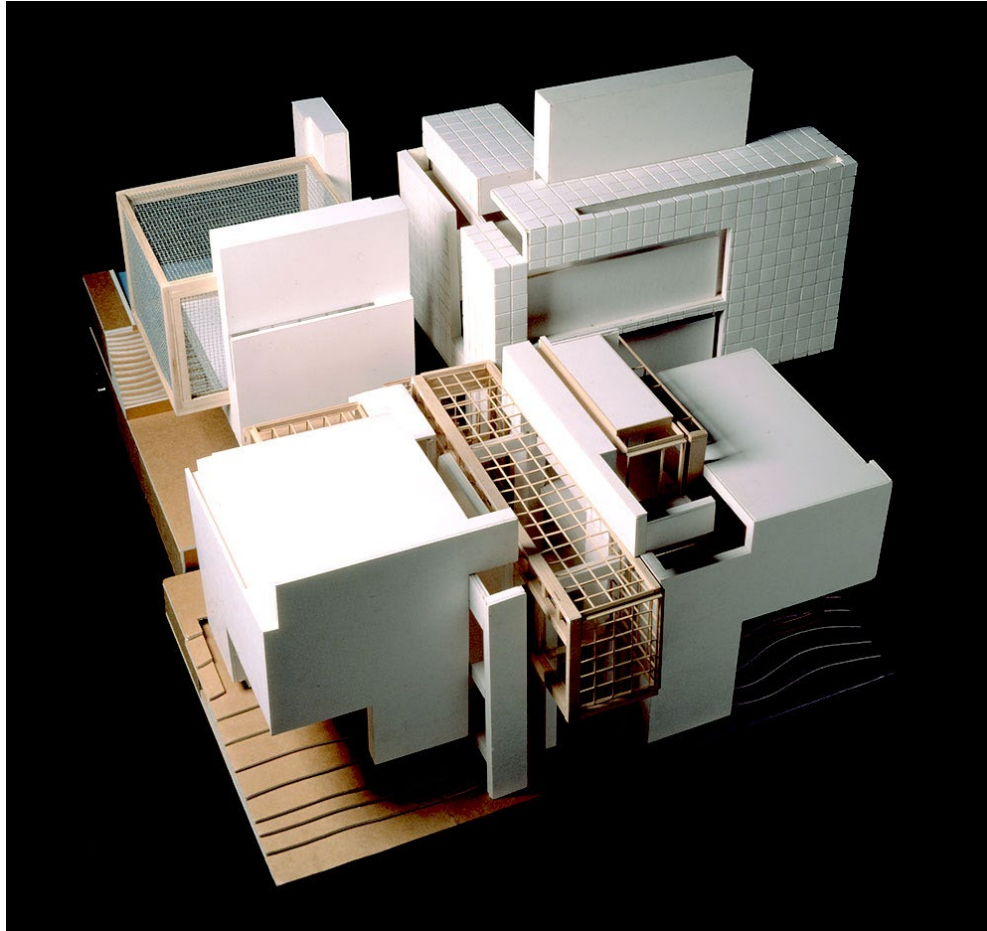
<https://www.archdaily.com/7638/final-wooden-house-sou-fujimoto>



<https://images.adsttc.com/media/images/5010/090a/28ba/0d42/2200/05ff/slideshow/stringio.jpg?1413926131>

3D – 2D – 1D models

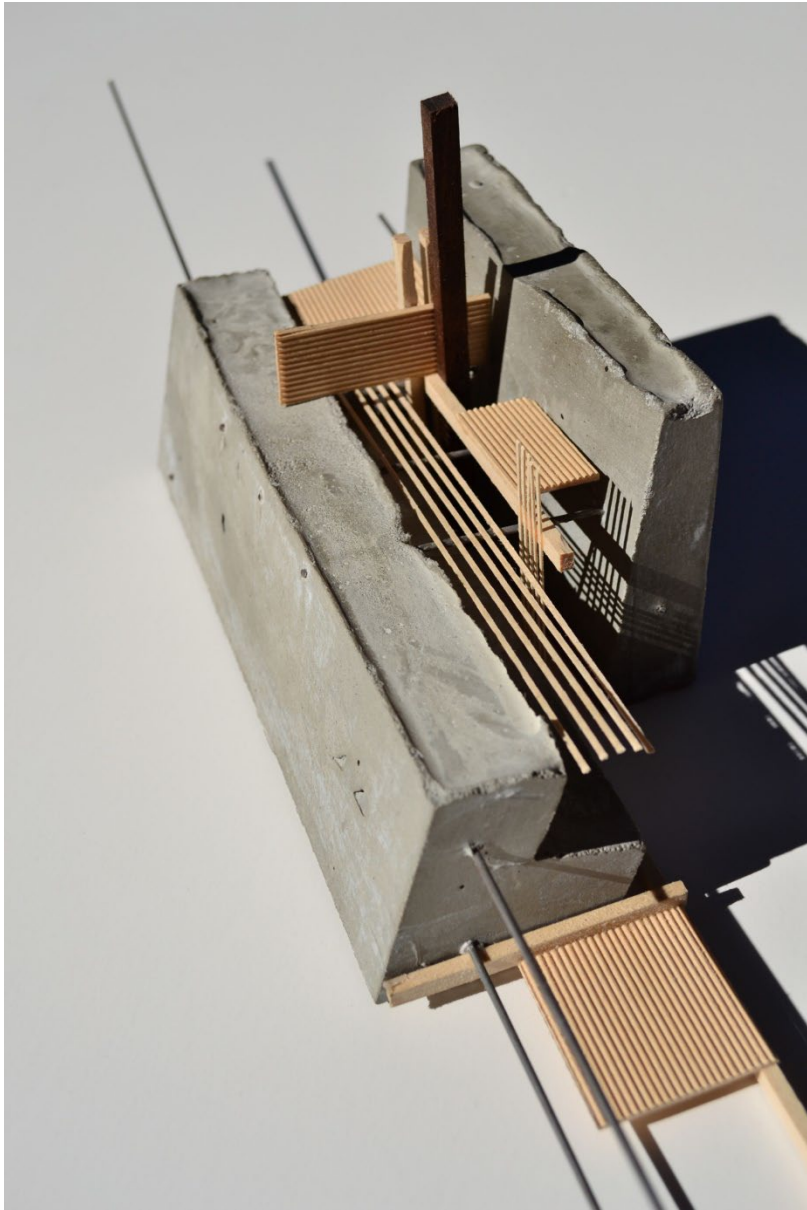
– mass, planar and linear compositions



House X 1075, Peter Eisenman
<https://eisenmanarchitects.com/House-X-1975>



<https://www.pinterest.ch/pin/328199891580578440/>



Daniel Houghton, USF School of Architecture, Class of 2014
Design II: "Miami artist live/work construct" - Spring 2011, Prof. Keubler Perry
<https://usfsacd.tumblr.com/post/18771005688/daniel-houghton-usf-school-of-architecture-class>

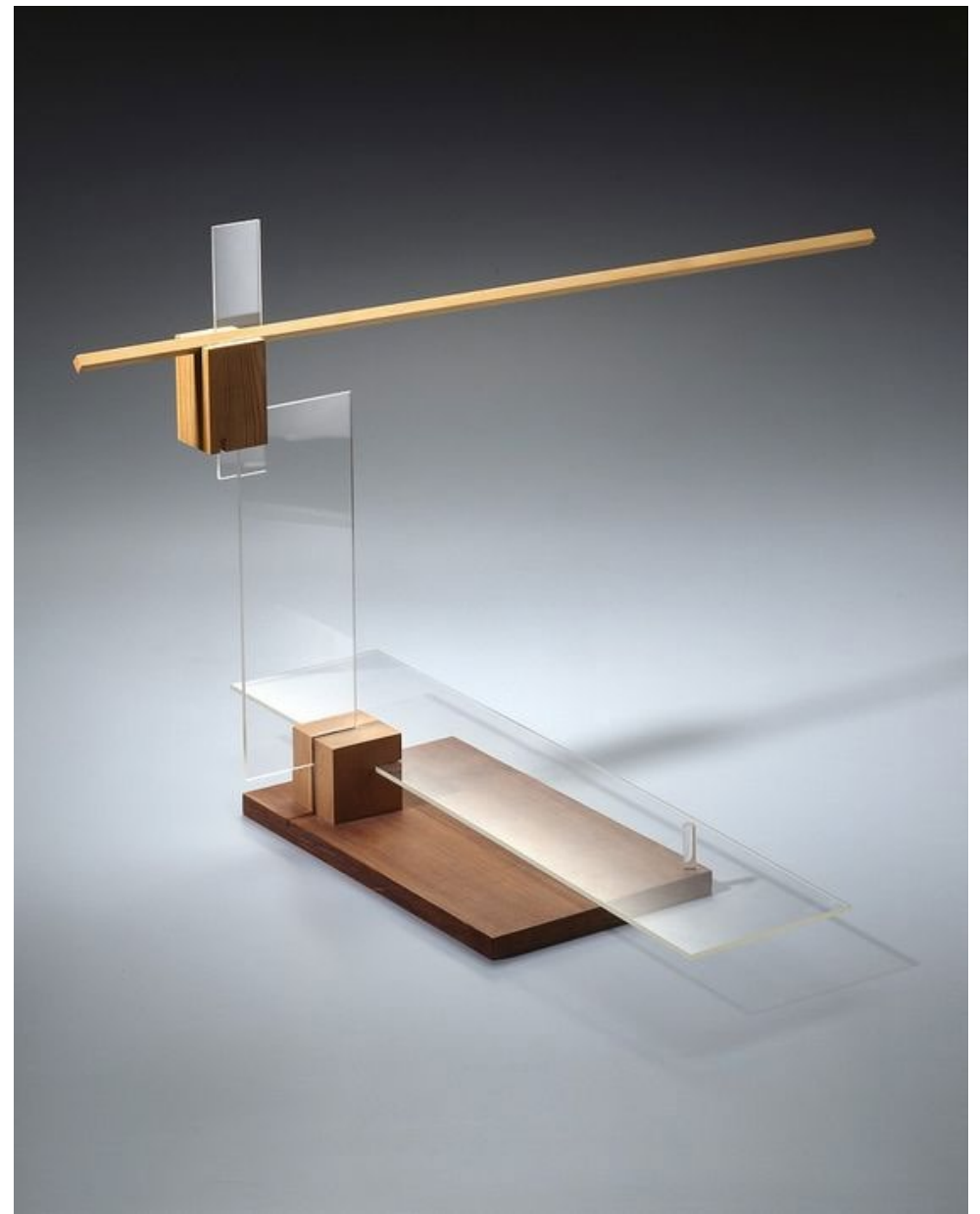


Wall Section Model

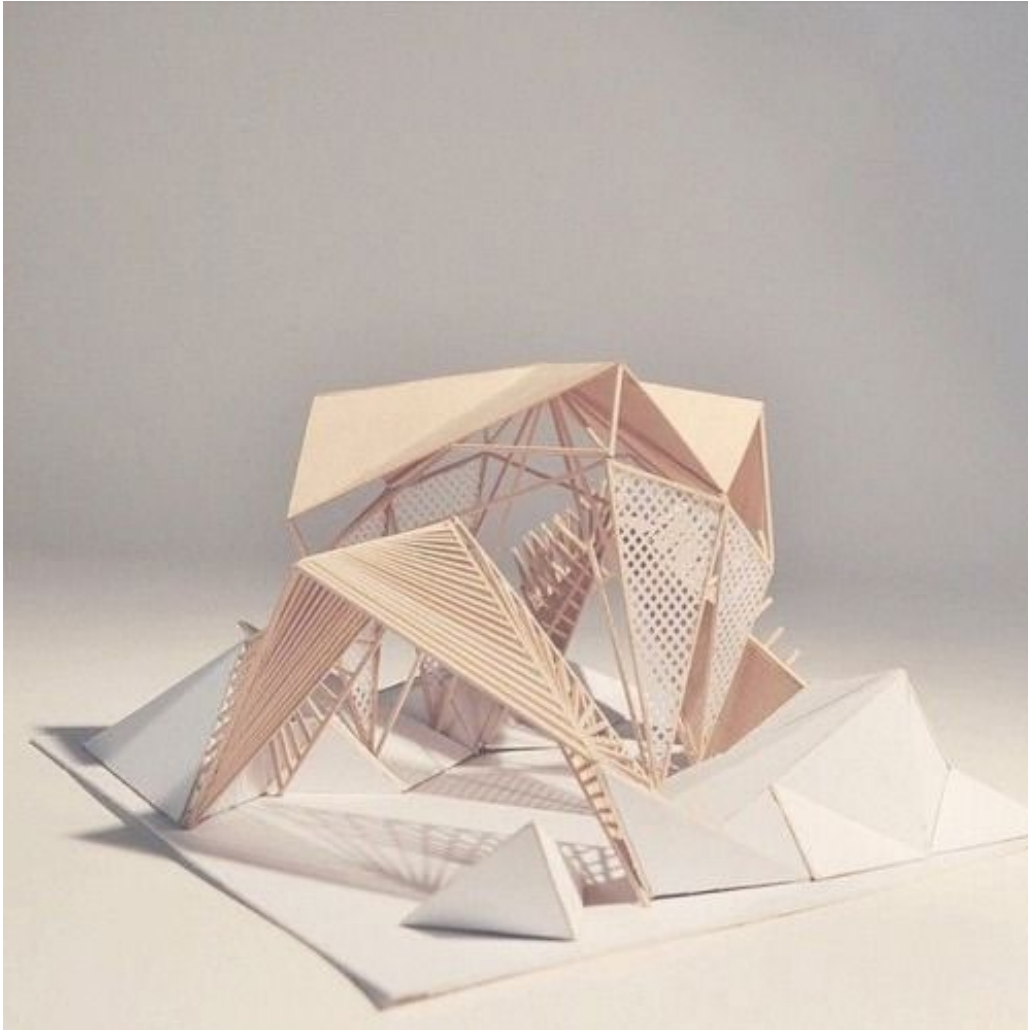
<https://www.flickr.com/photos/14433167@N00/412537272/in/photostream/>



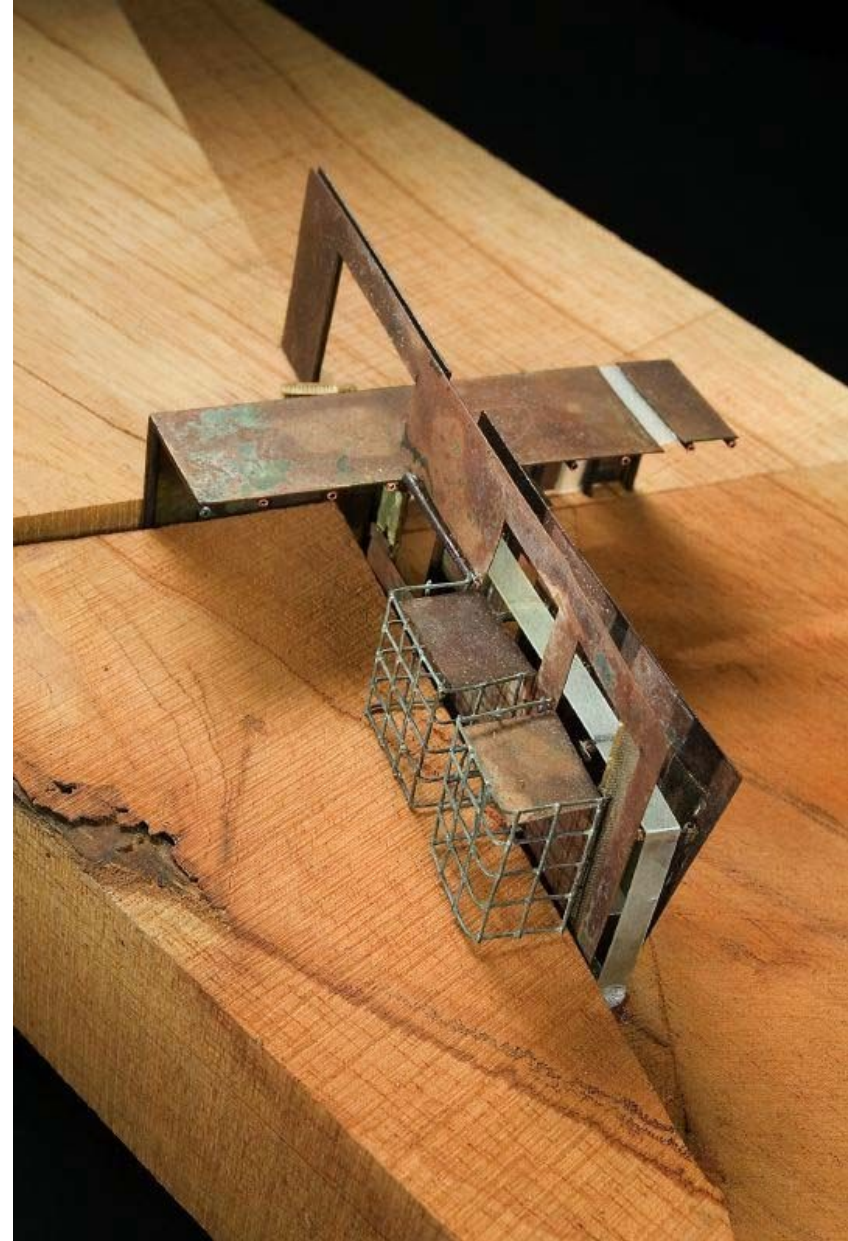
<https://www.pinterest.nz/pin/395190936033569298/>



Balance study from László Moholy-Nagy's Preliminary Course, um 1924 (replica 1967) <https://modelarchitecture.tumblr.com/post/158854009640/balance-study-from-l%C3%A1szl%C3%B3-moholy-nagys>



Shelter Pathe Model by luisfmnz-via
<https://conceptmodel.tumblr.com/post/123309295011/shelter-path-model-by-luisfmnz-via>



<https://i.pinimg.com/1200x/a3/ba/d3/a3bad3dda1f60847105a338ffa2b0f75.jpg>



A prototype of one of the petals, made of copper, aluminium and steel, is also included in the [Heatherwick Studio: Designing the Extraordinary](#) exhibition

<https://www.dezeen.com/2012/07/31/london-2012-olympic-cauldron-by-thomas-heatherwick-model-and-drawings/>



<https://www.ibanezkim.com/work#/conicbox/>

Skins and Skeletons: 3-D Textile Construction

Image courtesy of Mo Kelman

Title: Selfsame, 2010, shibori dyed and shaped silk, bamboo, 50" X 27" X 16"

<https://shibori.org/2014/01/09/providence-ri-mo-kelman-workshop-lecture/>



[Coroflot](#)

[ITALIAN SONNET, Sculpture, Concept Model by Maciek](#)

[Jozefowicz at Coroflot.com](#)

Creator: Maciek Jozefowicz

Copyright: © Maciek Jozefowicz

