

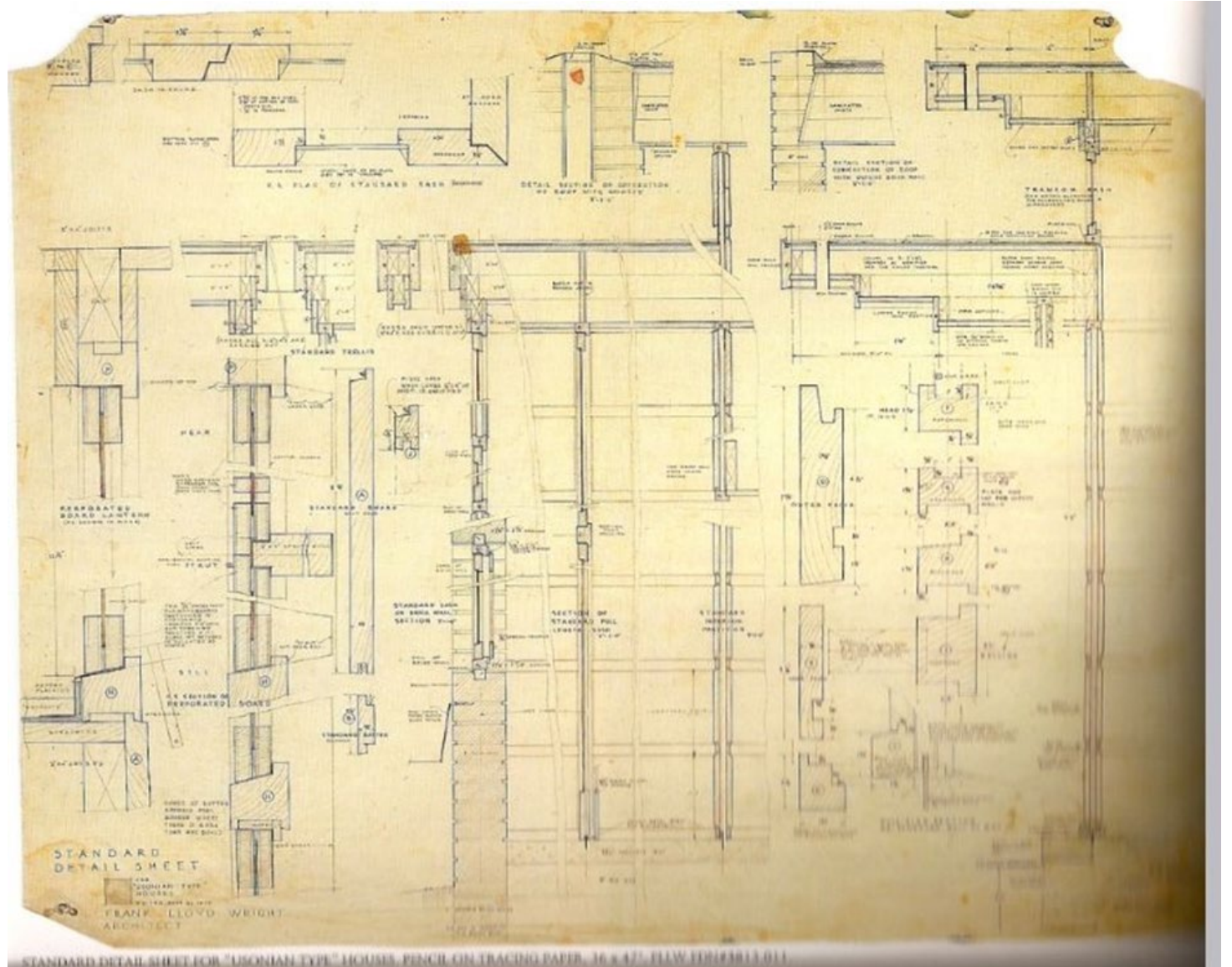
# MATERIALITY

sketching and drawing material connections

# DRAWING MATERIAL DETAILS

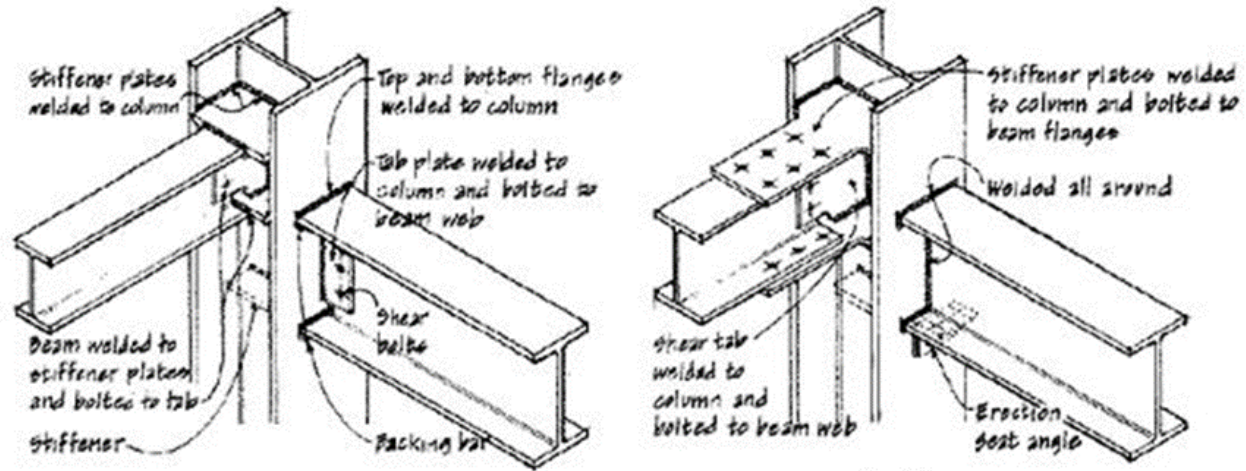
## Architectural Fabric

- Sketches and dimensioned details

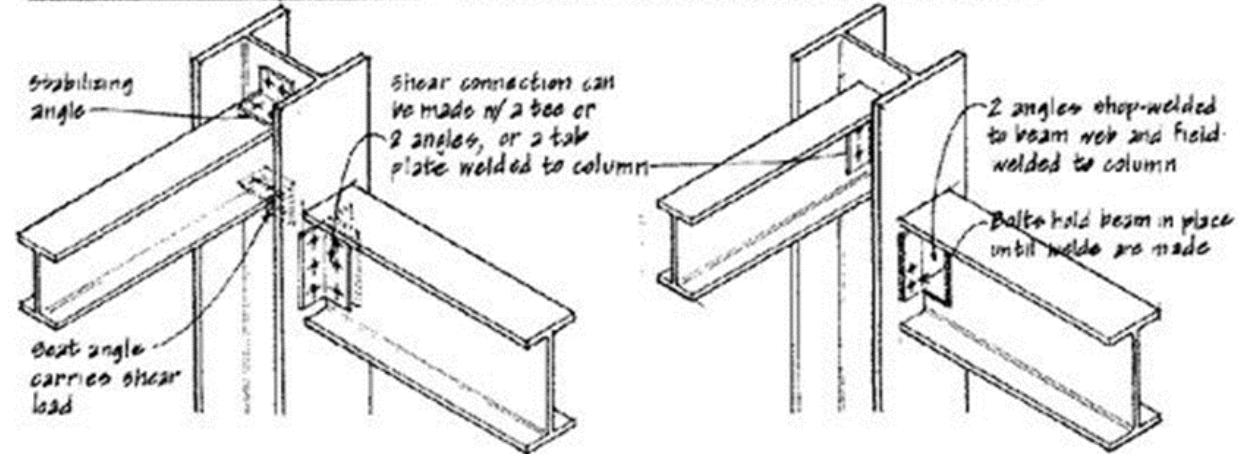


Standard Usonian detail sheet

<https://i.pinimg.com/originals/af/a8/53/afa853bf954ff4bbb22971c94db1f71c.jpg>



TYPE 1: MOMENT CONNECTIONS - Beam flanges must be rigidly connected to column



TYPE 2: SHEAR CONNECTIONS

## hss steel column and beam connection

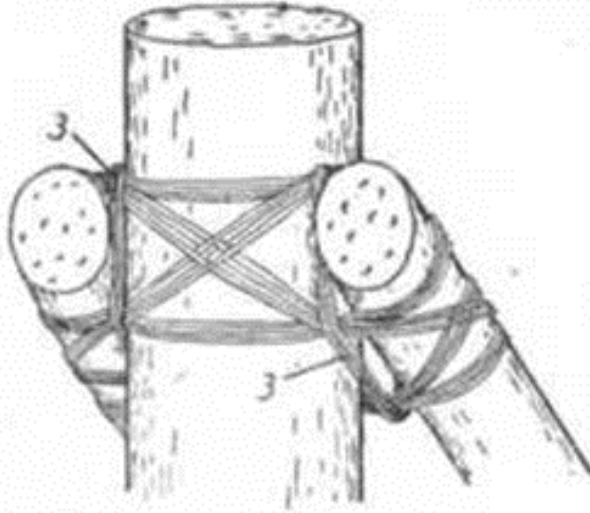


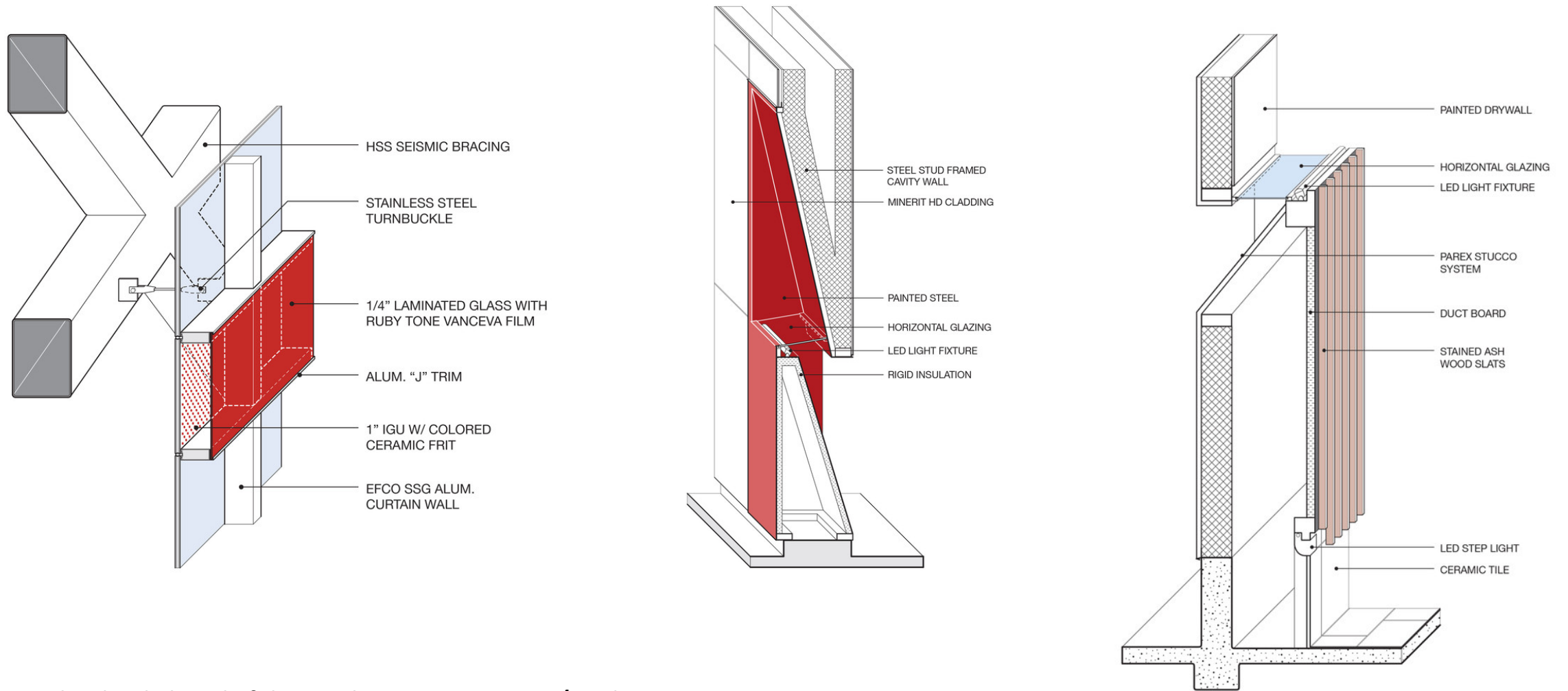
Fig. 31

FIGURE 31.—Lashing of 2 collar beams to middle main post. The lashing is tightened up and finished off with a number of circumferential turns (3) on either side of the post.

**SAMOAN MATERIAL CULTURE  
ITU MIDDLE SECTION**

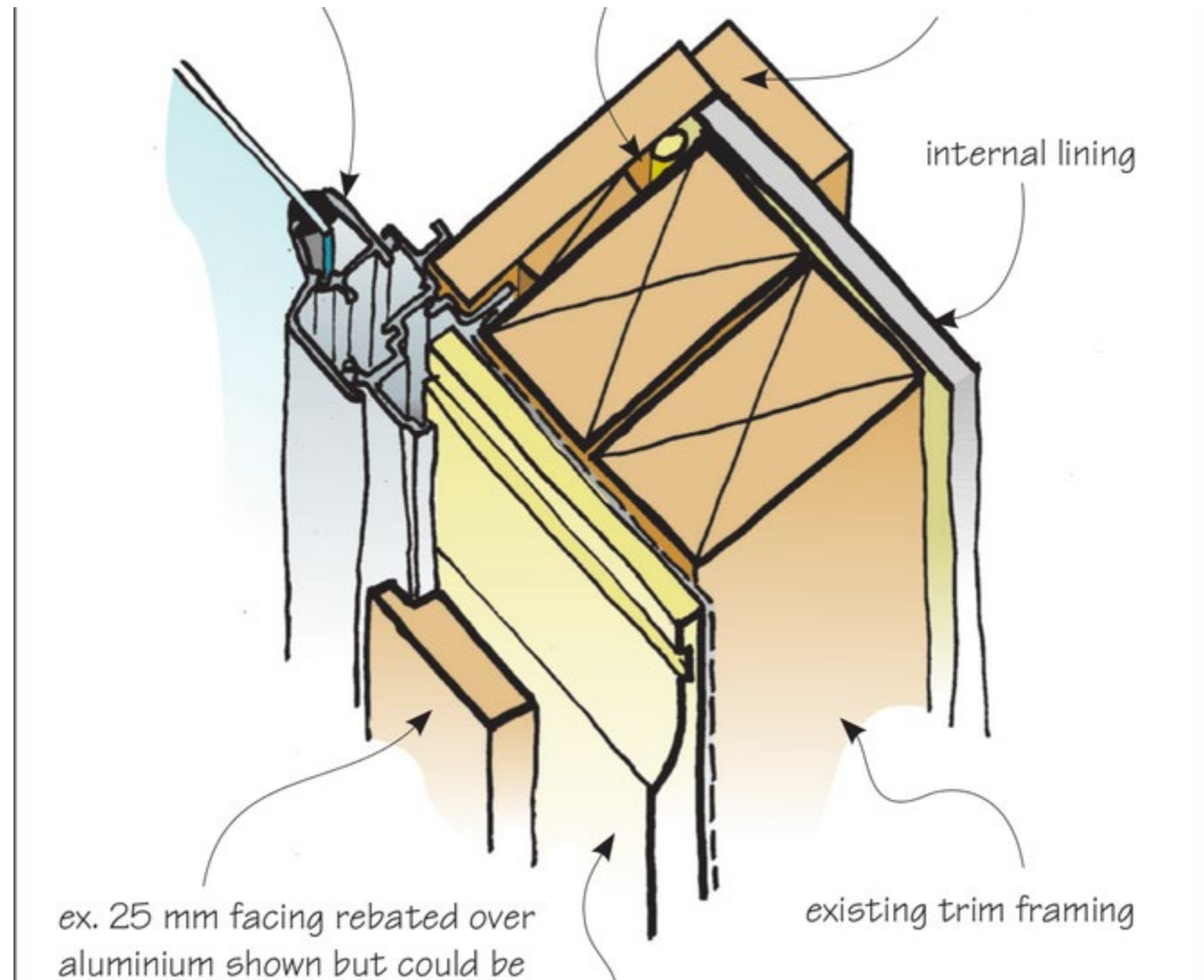
<http://nzetc.victoria.ac.nz/tm/scholarly/tei-BucSamo-t1-body1-d2-d7-d2.html>





**Jesuit High School Chapel of the North American Martyr / Hodgetts + Fung**

[https://www.archdaily.com/606538/jesuit-high-school-chapel-of-the-north-american-martyr-hodgetts-fung?ad\\_medium=gallery](https://www.archdaily.com/606538/jesuit-high-school-chapel-of-the-north-american-martyr-hodgetts-fung?ad_medium=gallery)



**Figure 2 Extended facings with new window to provide sufficient cladding cover**

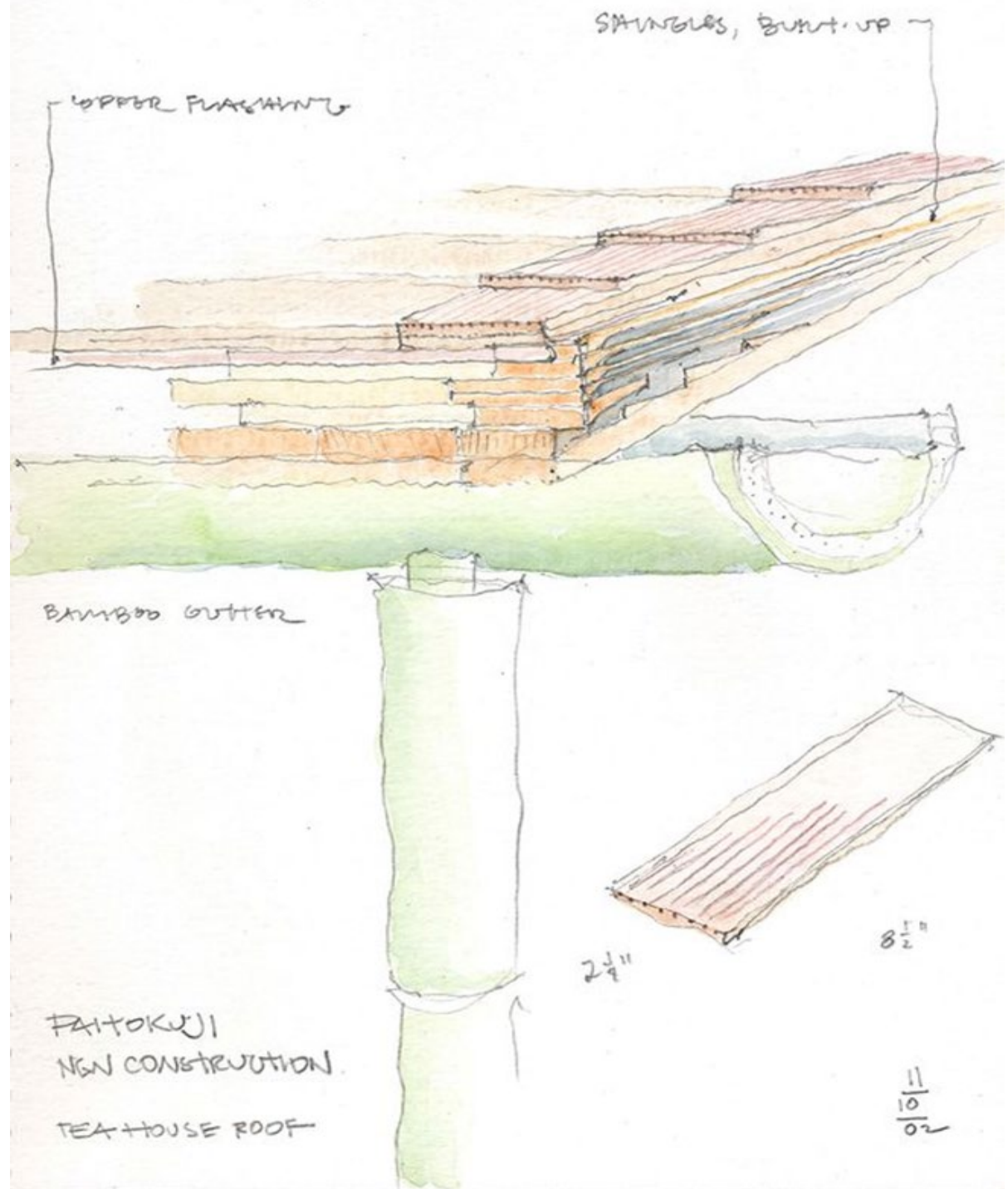
<https://www.buildmagazine.org.nz/index.php/articles/show/timber-to-aluminium-windows-like-for-like>



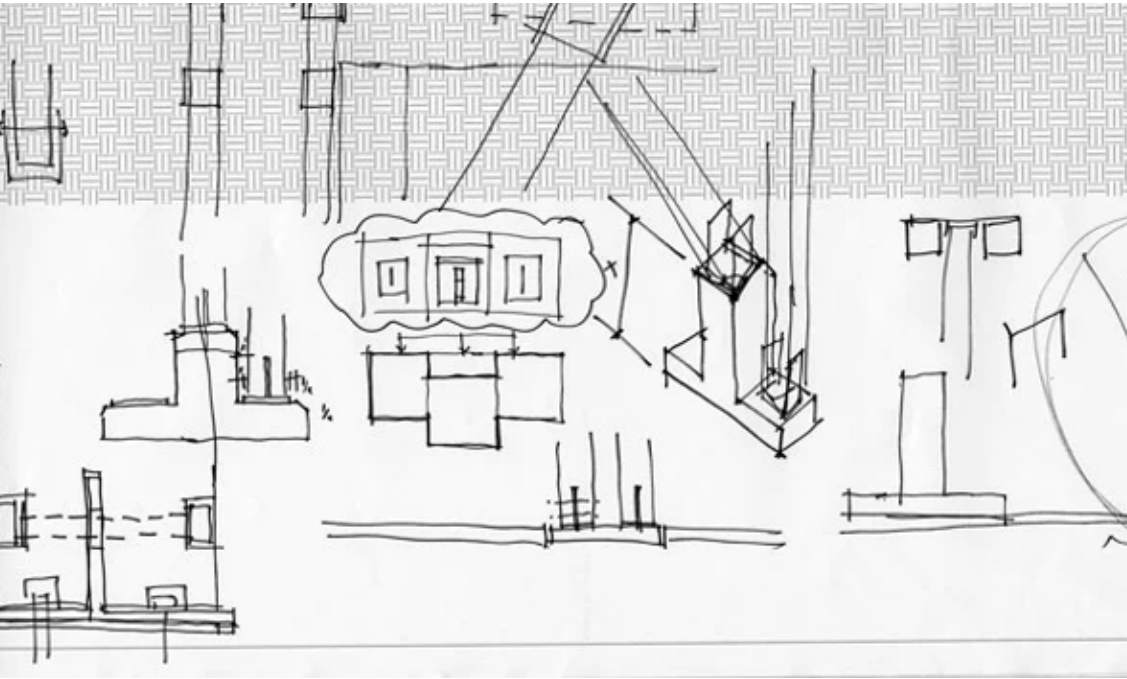
<https://wabisabimind.tumblr.com/post/157360942211/japanese-gardens>

Tea house roof detail, Daitoku-ji, Kyoto

<https://www.pinterest.nz/mindstreamrad/field-notes/>

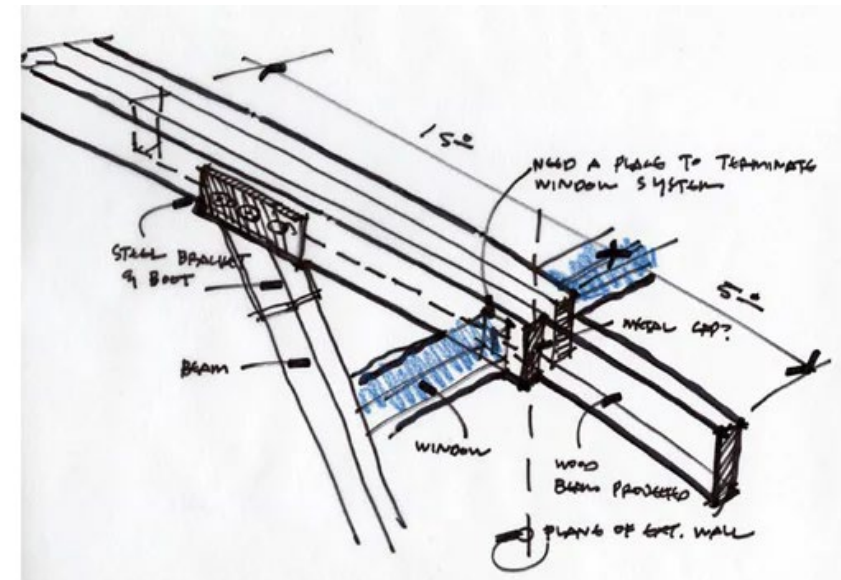
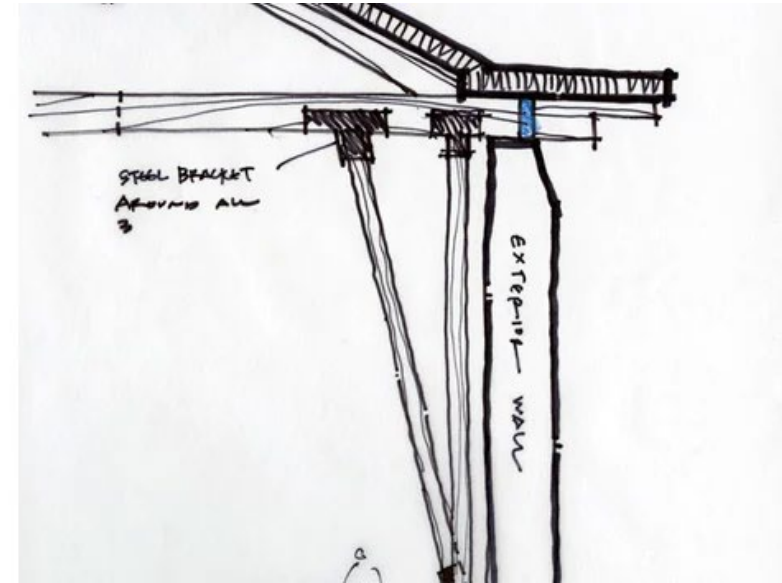






Most of my sketches tend to be on trace paper or on plotted-out sheets. I have frequently described myself in the following way: *“Ask me what time it is, and I’ll tell you how to build a clock.”*

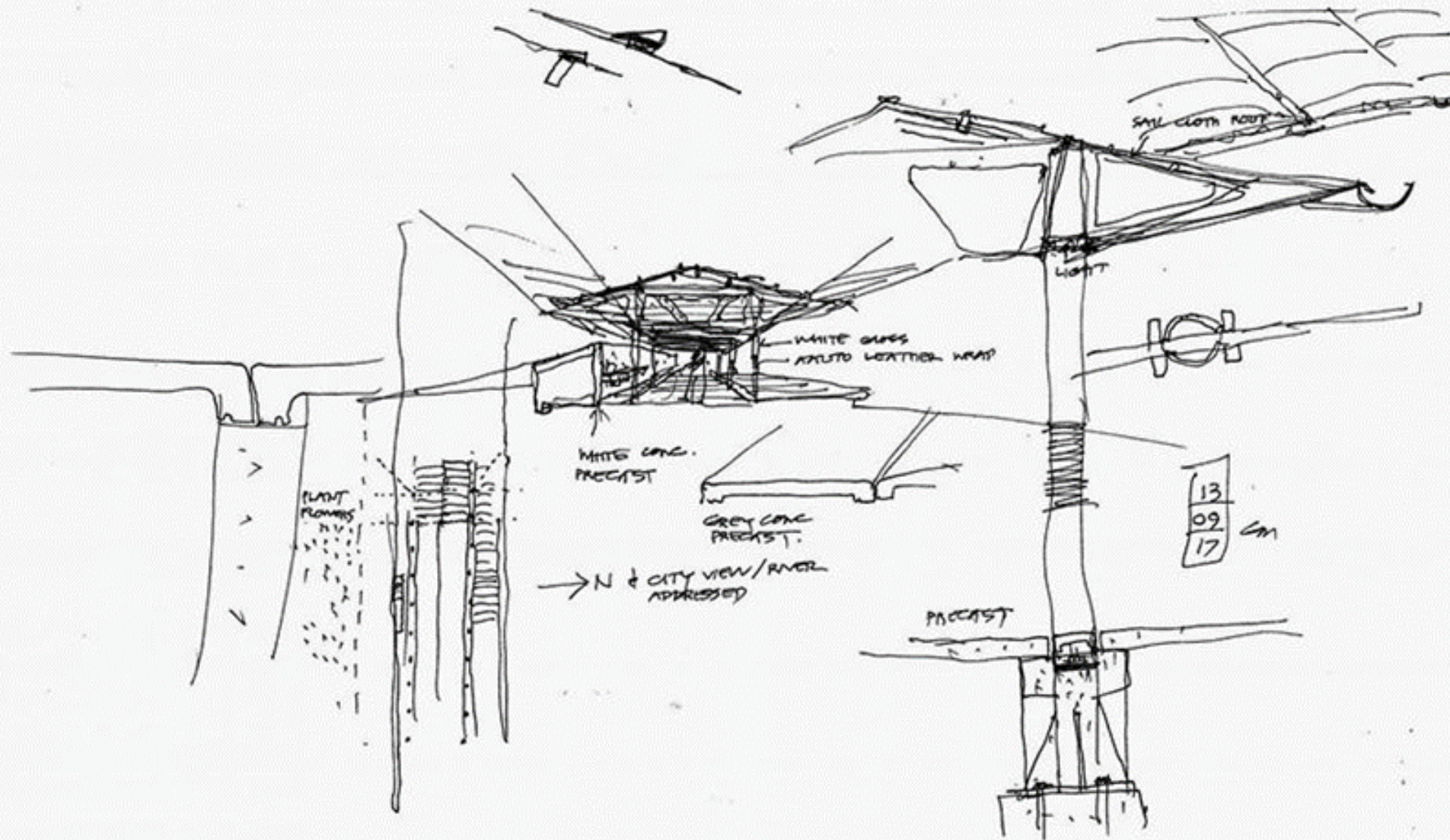
<https://architizer.com/blog/practice/details/young-architect-guide-architectural-sketching/amp/>





**Glenn Murcutt's design for the 2019 MD Pavilion revealed**

<https://www.wallpaper.com/architecture/mpavilion-glenn-murcutt-2019-australia>







## Glenn Murcutt – unveils minimal M Pavilion in Melbourne

MPavilion is complete with electronically operated fabric blinds on the south facade for weather protection, and is flanked by two discreet alcoves with white timber pivot doors to conceal back of house equipment.

<https://www.dezeen.com/2019/11/12/glenn-murcutt-mpavilion-2019-architecture/>

<https://www.dezeen.com/2019/11/12/glenn-murcutt-mpavilion-2019-architecture/>



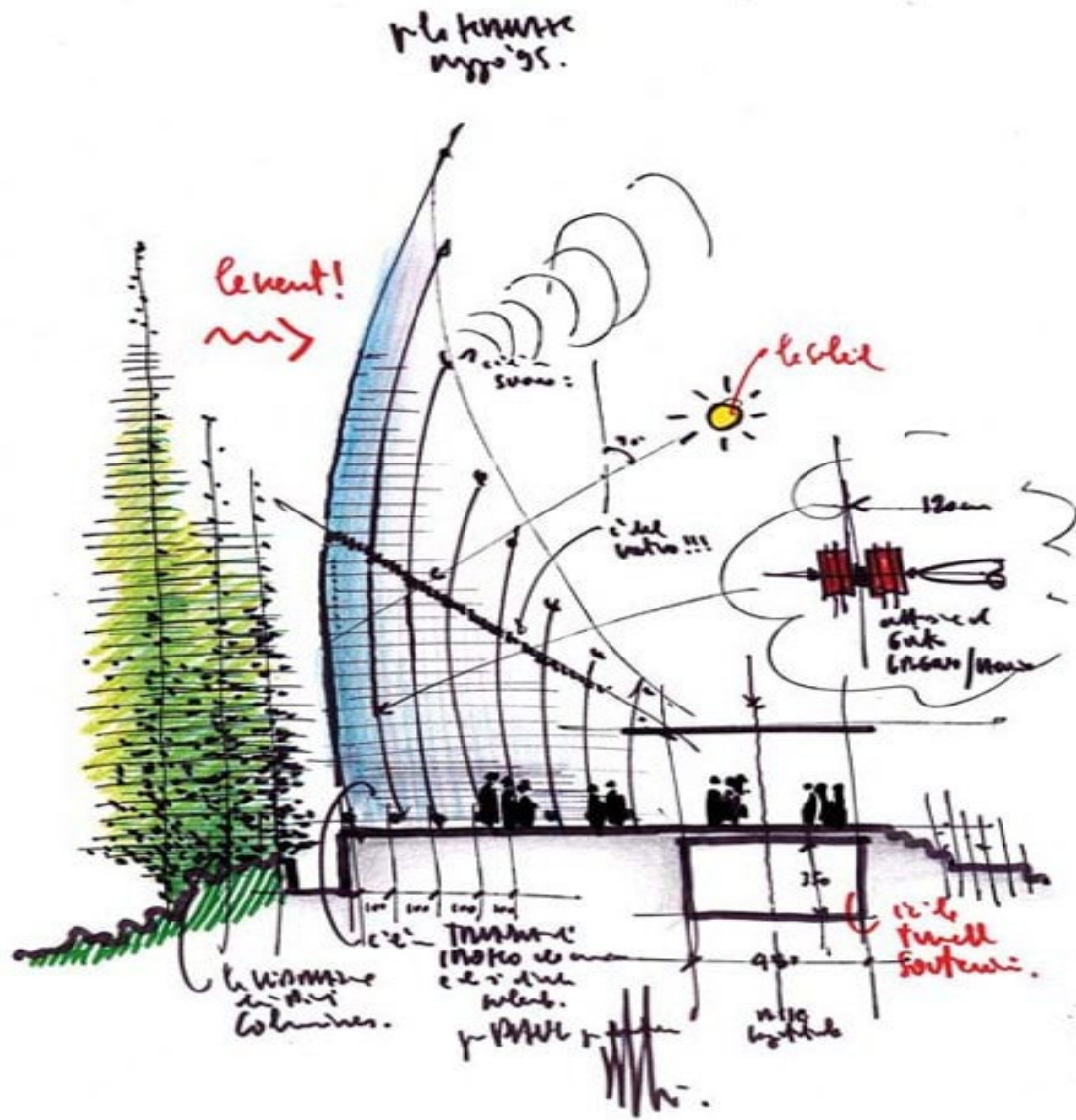




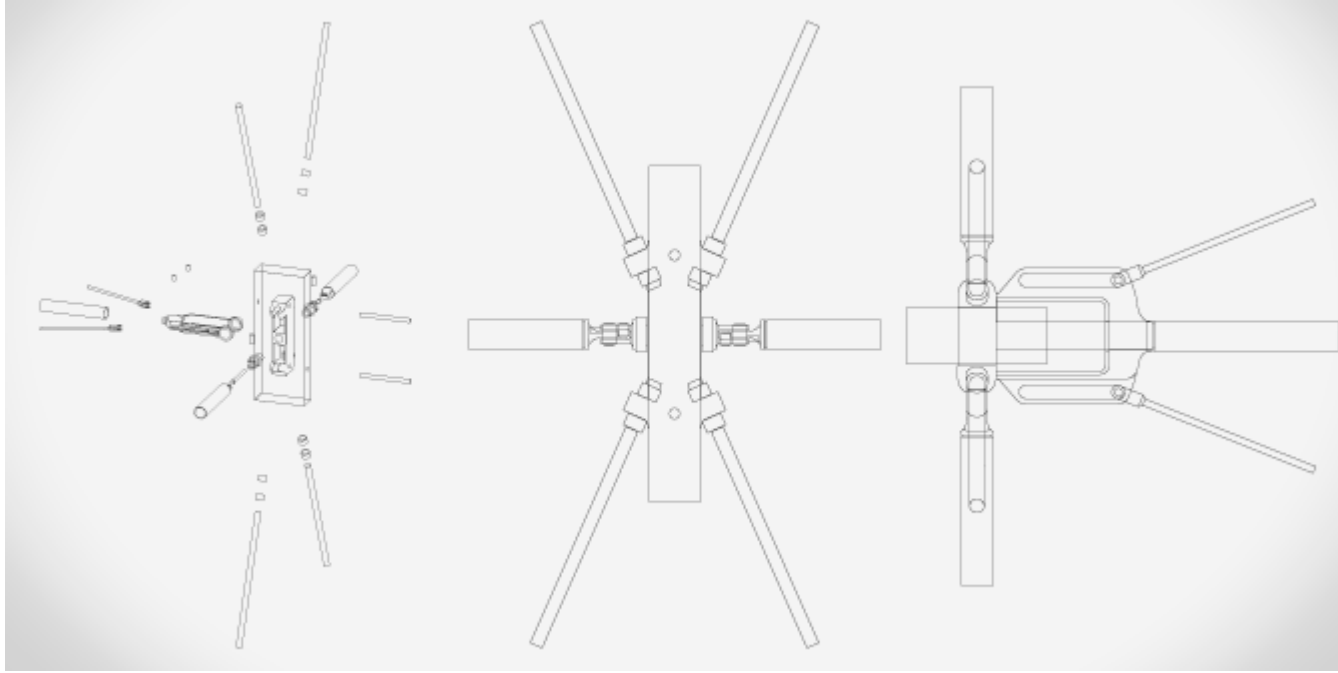
**The Jean-Marie Tjibaou Cultural Center by Renzo Piano  
New Caledonia**

<https://www.inexhibit.com/wp-content/uploads/2019/02/Jean-Marie-Tjibaou-Cultural-Center-New-Caledonia-Renzo-Piano-climatic-section.jpg>





The Jean-Marie Tjibaou Cultural Center by Renzo Piano  
New Caledonia

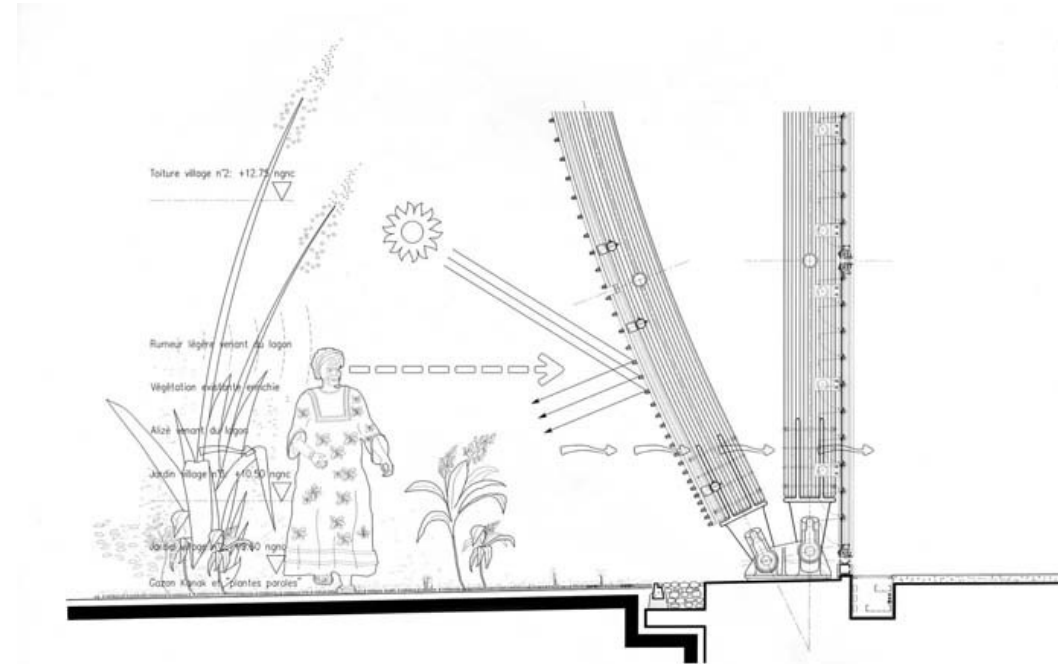


**Project :** Renzo Piano Joint Detail Illustration, Spring 2004

**Work :** Illustrator

**Details :** Intricate study and manual illustration of the joints used in the construction of the *Jean-Marie Tjibaou Cultural Center* in New Caledonia by [Renzo Piano Building Workshop](https://www.archdaily.com/600641/ad-classics-centre-culturel-jean-marie-tjibaou-renzo-piano/540e036ac07a80b9060000f4-ad-classics-centre-culturel-jean-marie-tjibaou-renzo-piano-plan?next_project=no).

<https://cargocollective.com/jonnygotham/filter/illustration/Renzo-Piano-Joint-Detail-2004>



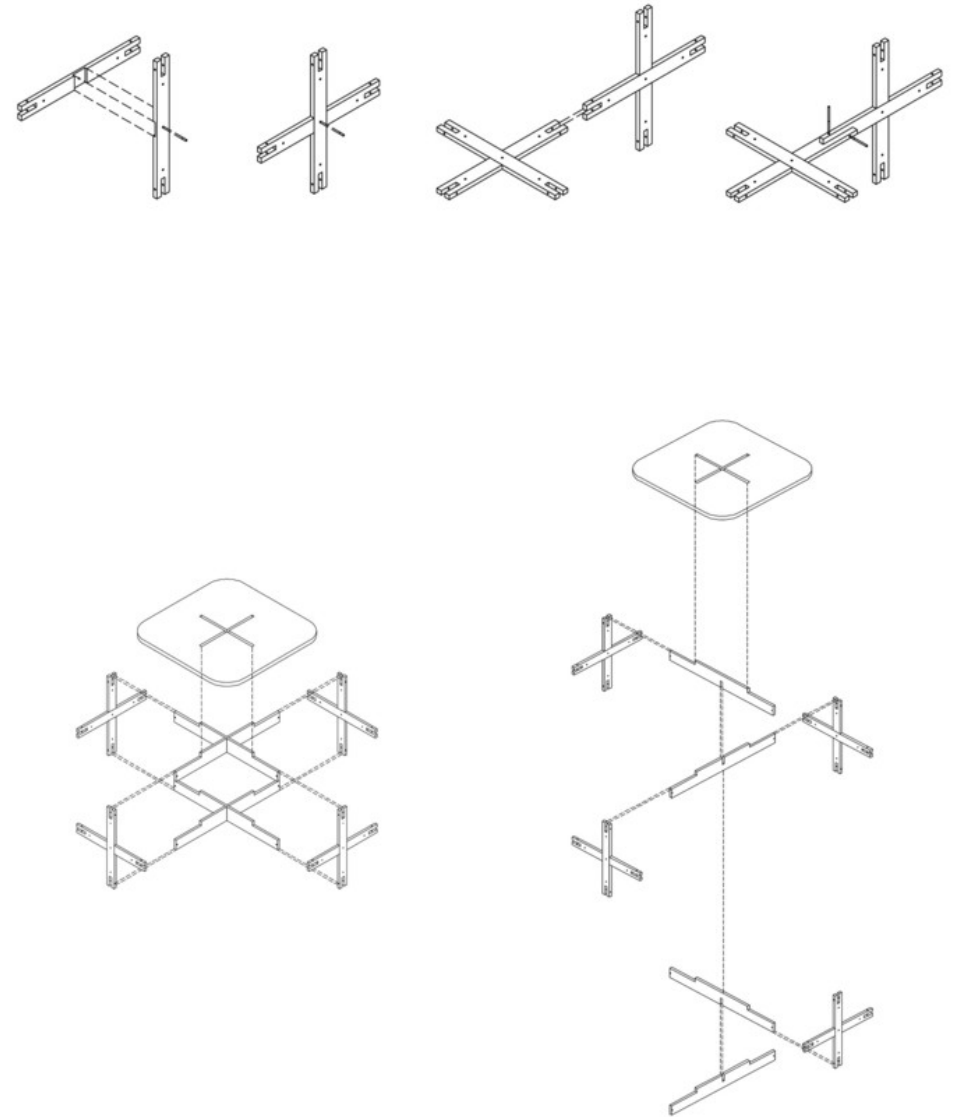
[https://www.archdaily.com/600641/ad-classics-centre-culturel-jean-marie-tjibaou-renzo-piano/540e036ac07a80b9060000f4-ad-classics-centre-culturel-jean-marie-tjibaou-renzo-piano-plan?next\\_project=no](https://www.archdaily.com/600641/ad-classics-centre-culturel-jean-marie-tjibaou-renzo-piano/540e036ac07a80b9060000f4-ad-classics-centre-culturel-jean-marie-tjibaou-renzo-piano-plan?next_project=no)





**BCN Re.Set - Identity Pavilion / Urbanus + La Salle**  
**Public Space, Pavilion – Barcelona, Spain**

<https://www.archdaily.com/800218/50-impressive-details-using-wood/58349eafe58ecea948000184-50-impressive-details-using-wood-image>







**Early sketch for the project Serpentine Gallery Pavilion 2013, by Sou Fujimoto Architects. From: Fujimoto (2012)**

**Serpentine Pavilion / Sou Fujimoto, 2013**

[https://www.researchgate.net/figure/Early-sketch-for-the-project-Serpentine-Gallery-Pavilion-2013-by-Sou-Fujimoto\\_fig1\\_321232555](https://www.researchgate.net/figure/Early-sketch-for-the-project-Serpentine-Gallery-Pavilion-2013-by-Sou-Fujimoto_fig1_321232555)

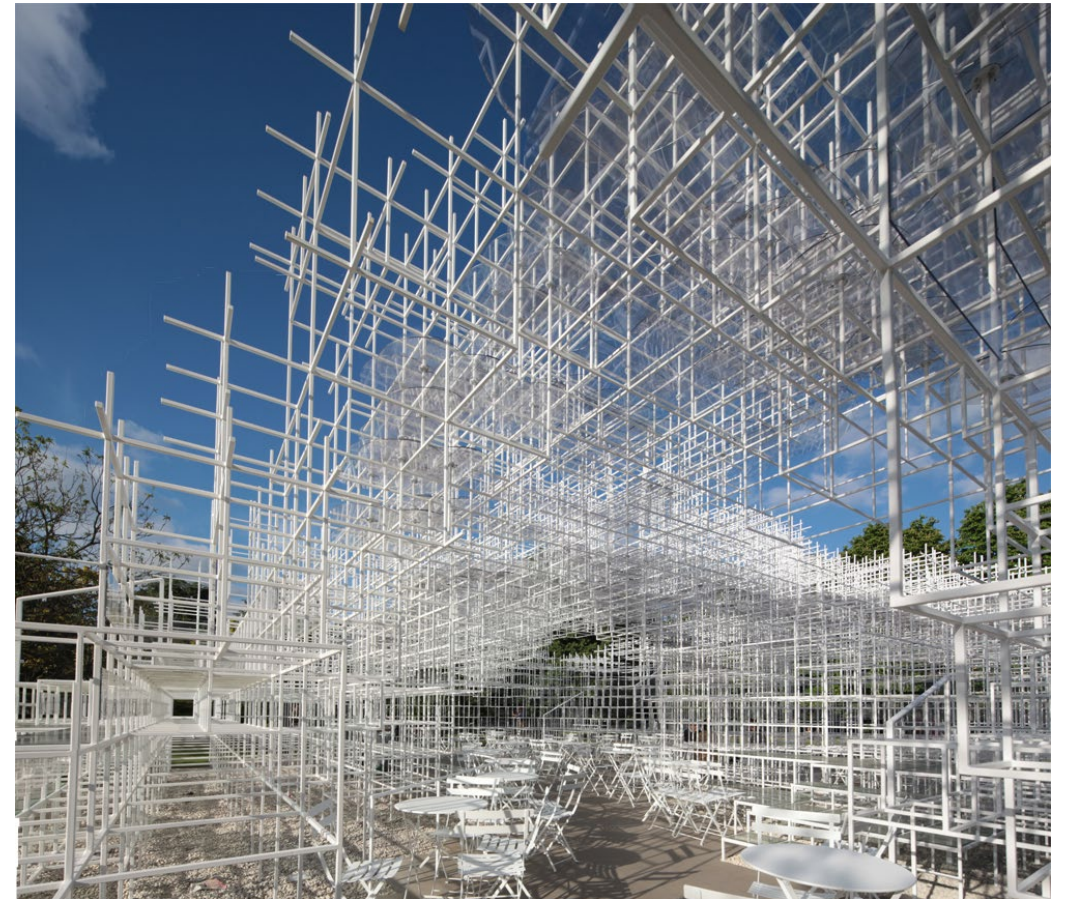
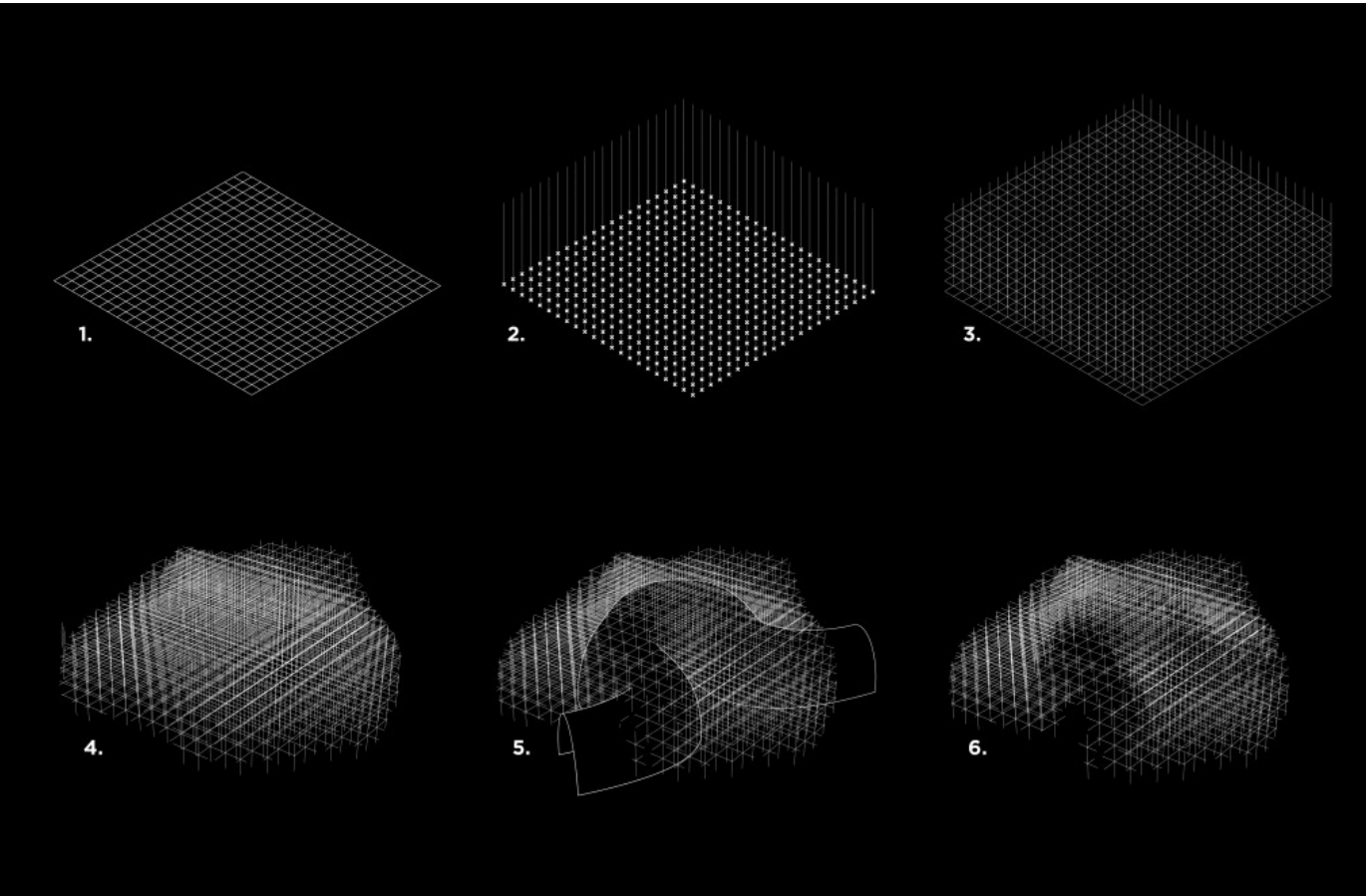


[Images@ Daniel Portilla](#)

[https://www.archdaily.com/384289/serpentine-pavilion-sou-fujimoto?ad\\_medium=gallery](https://www.archdaily.com/384289/serpentine-pavilion-sou-fujimoto?ad_medium=gallery)

[https://images.adsttc.com/media/images/51b1/15fd/b3fc/4b22/5b00/0245/large\\_jpg/2013-06-06\\_14.13.04.jpg?1370559986](https://images.adsttc.com/media/images/51b1/15fd/b3fc/4b22/5b00/0245/large_jpg/2013-06-06_14.13.04.jpg?1370559986)



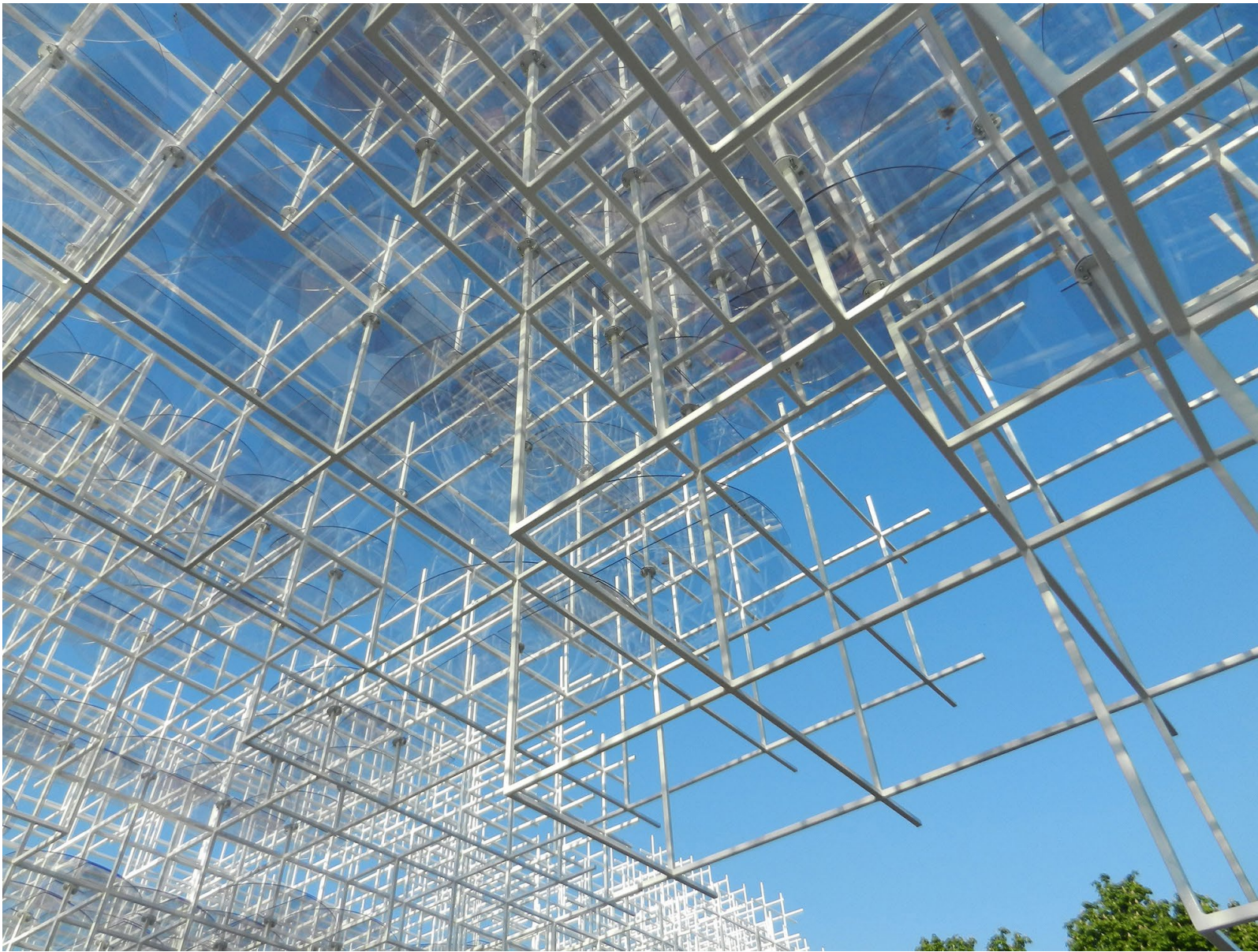


**Creation of the melted form dispersing into the green setting**

<http://www.iaacblog.com/programs/animated-systems-sou-fujimoto-serpentine-pavilion/>

<https://www.detail-online.com/article/interactive-art-serpentine-gallery-pavilion-by-sou-fujimoto-16577/>





[https://images.adsttc.com/media/images/51b1/1550/b3fc/4b22/5b00/0241/large\\_jpg/2013-06-06\\_14.01.54.jpg?1370559817](https://images.adsttc.com/media/images/51b1/1550/b3fc/4b22/5b00/0241/large_jpg/2013-06-06_14.01.54.jpg?1370559817)





**CONCEPT:**

Areas of the abstract grid designated to fulfil a specific function are fitted with hardly noticeable transparent elements. Fish scale-like polycarbonate disks arranged in clusters in the roof area serve as rain protection. The installation attempts to replicate the open structure of clouds, which works by varying the density of the modules admitting sunlight through the white steel construction. When the sky is overcast, the polycarbonate disks accentuate the appearance of the grey clouds with their curved contours.

<https://www.newcivilengineer.com/archive/serpentine-gallery-cracking-a-design-maze-03-06-2013/>