

design process

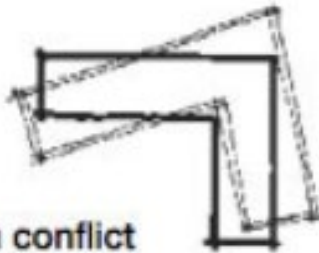
Sketches + sketch modelling
concept and design development



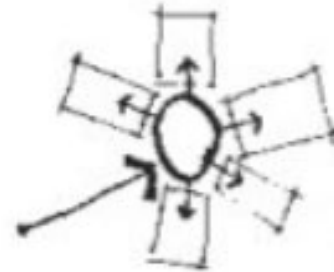
Odd shapes intrude on "pure" space



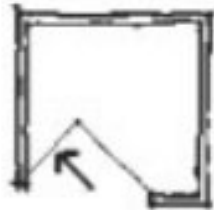
Finger poking into the woods



L's in conflict



Radial scheme with missing spoke



Box subtracted



Core segregates public-private

15/ PARTI

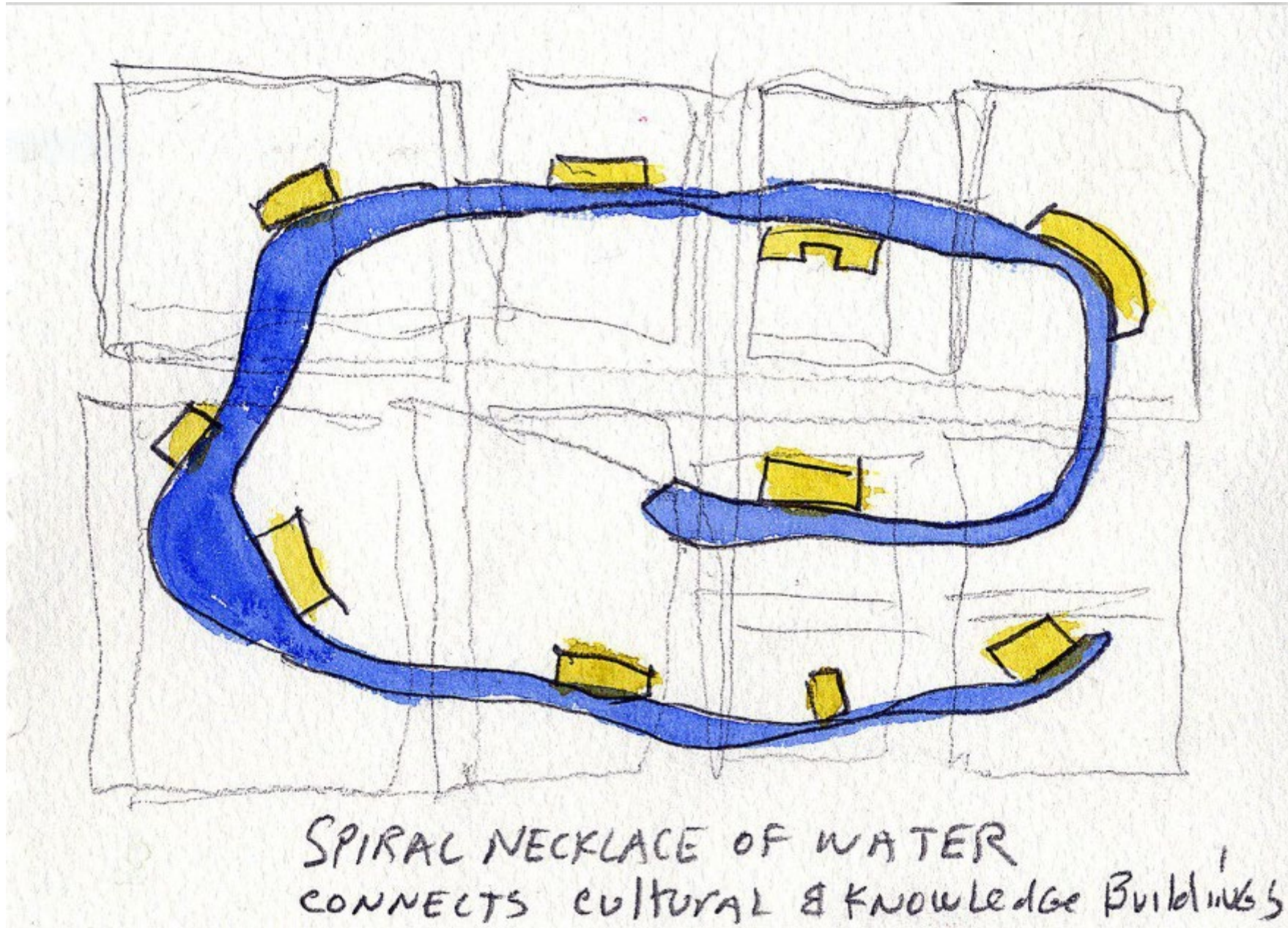
"A *parti* is the central idea or concept of a building"

101 Things I Learned in Architecture School - Matthew Frederick, The MIT Press @2007

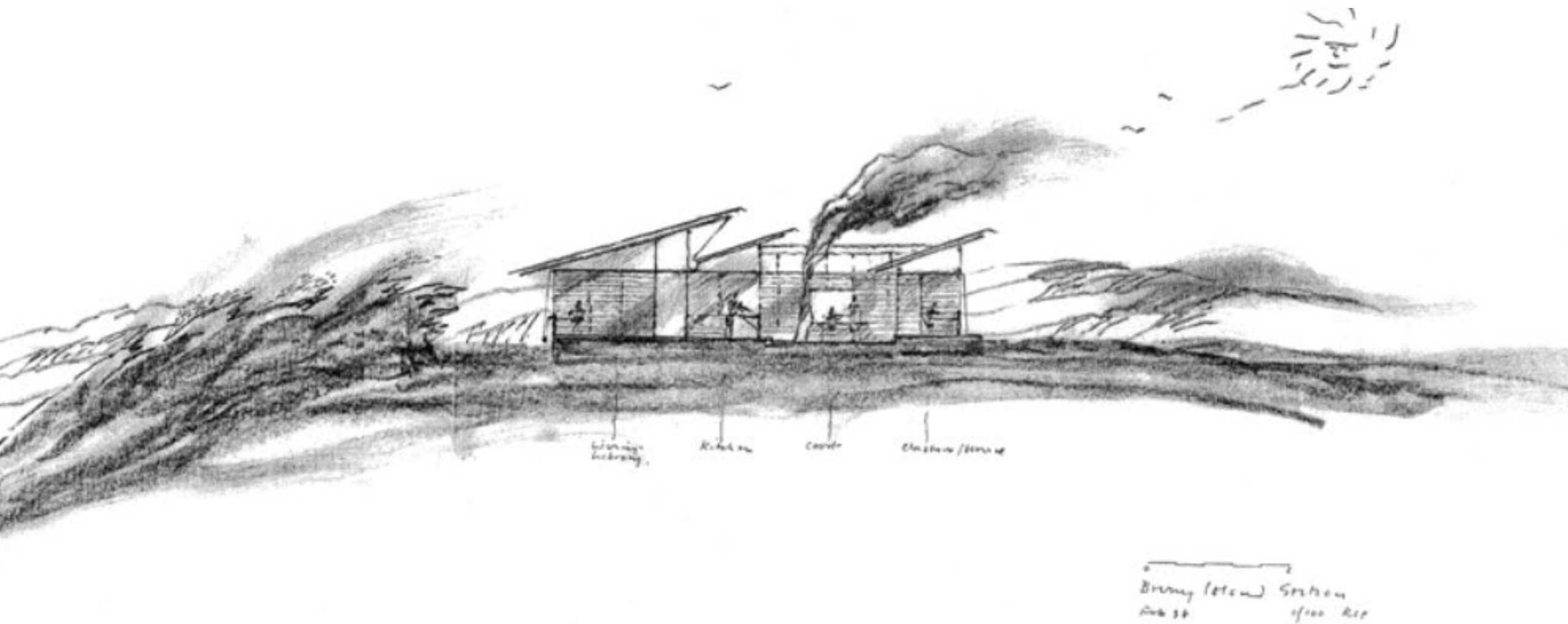
Rectangular S



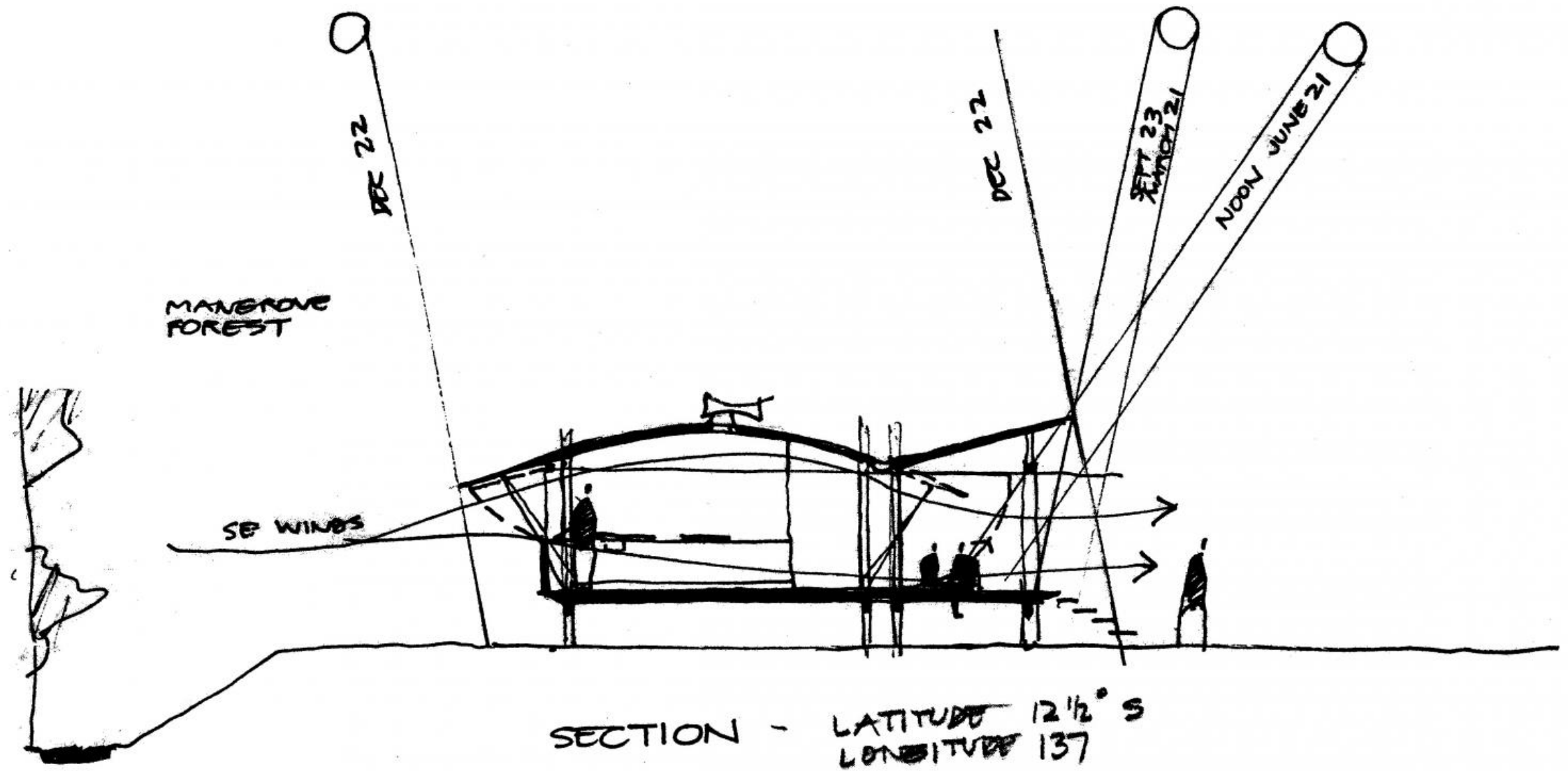
Bologna Civic Offices, Mario Cucinella Architects, Parti diagram



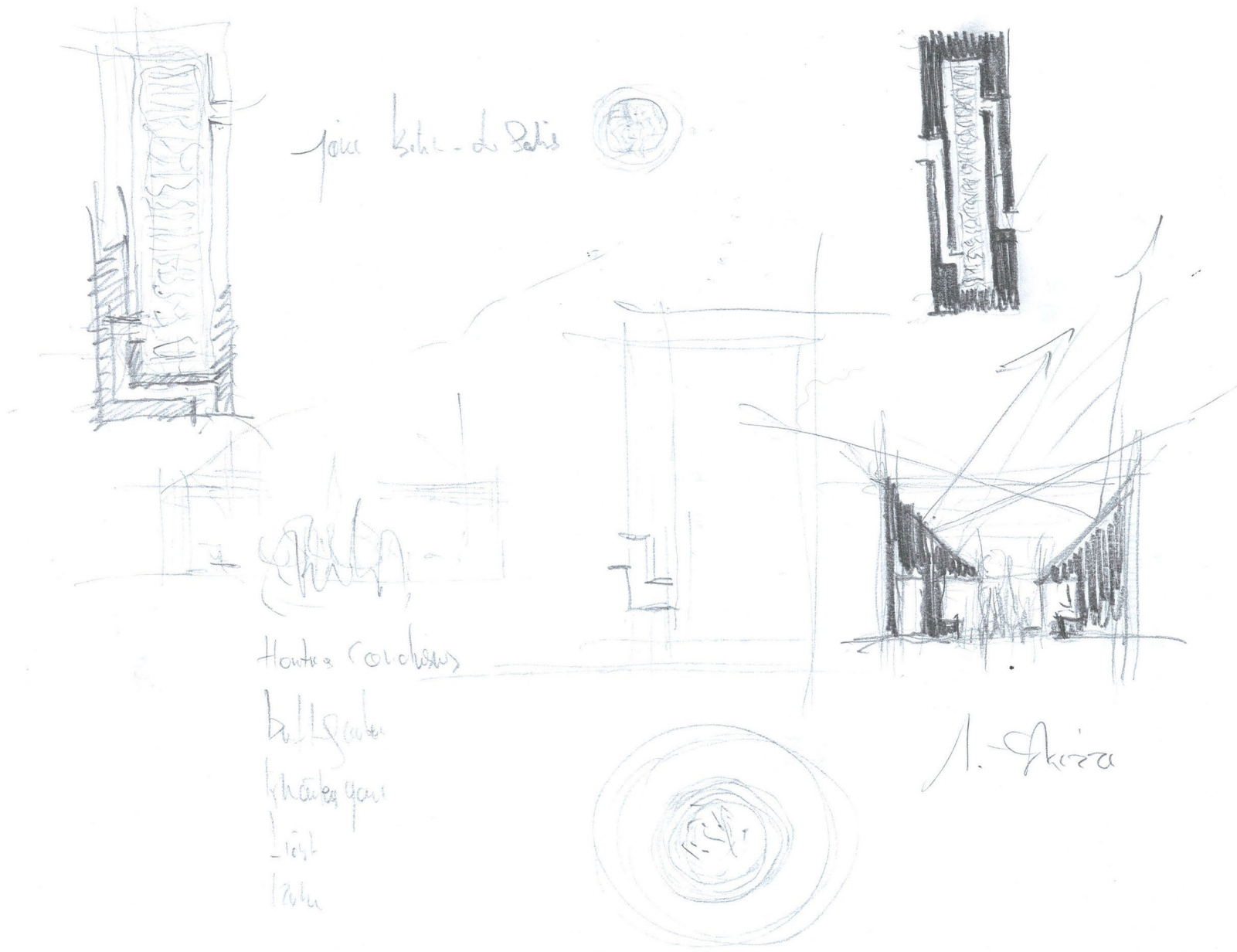
SPIRAL NECKLACE OF WATER
CONNECTS CULTURAL & KNOWLEDGE BUILDINGS



Cloudy Bay Retreat, Richard Leplastrier
<https://panfilo.co/2013/12/07/richard-leplastrier/>



Sections sum up Glenn Murcutt's climatic interests and construction methods: in the sketch, the Marika-Alderton house <https://arquitecturaviva.com/articles/llamame-glenn-3>



jaune beige - du beige

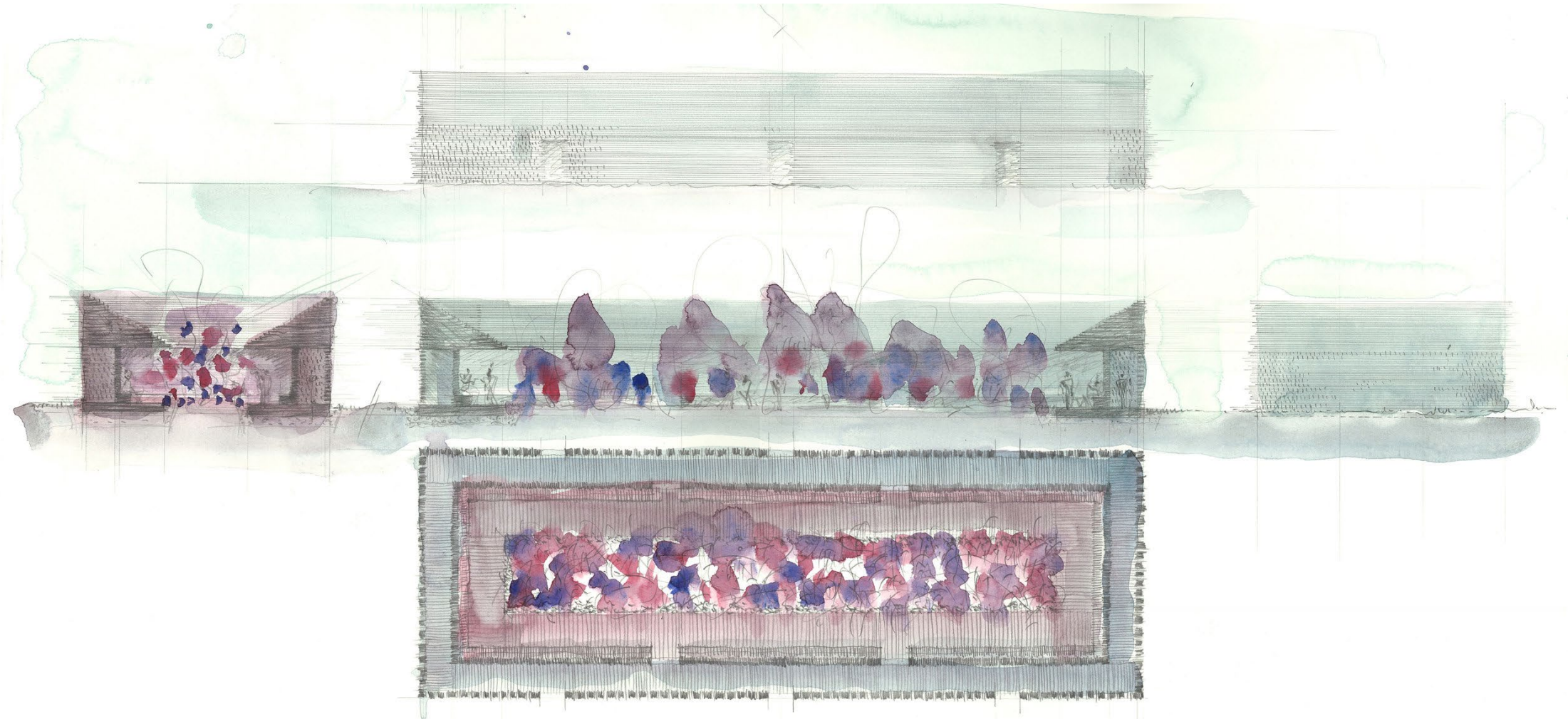
[Handwritten scribble]

Houten & (concrete)

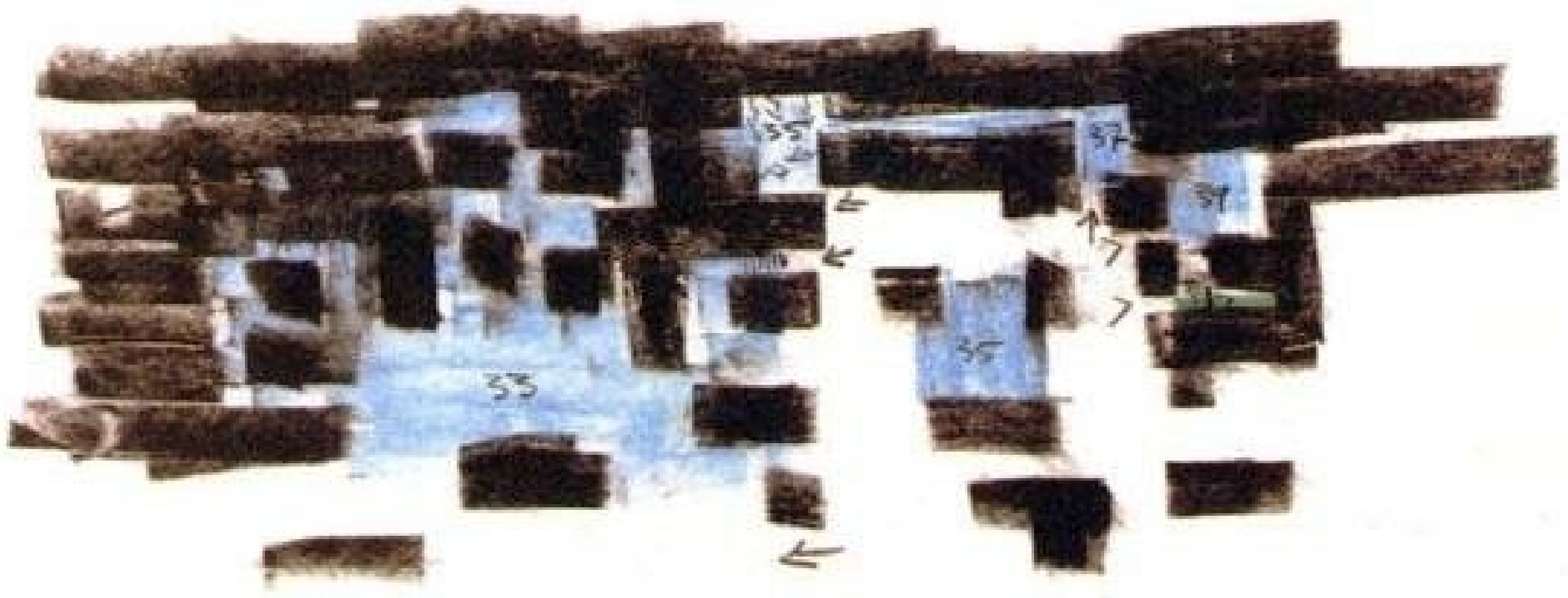
ball games
kitchen area
light
table

A. Skizza

First sketch, Archive Peter Zumthor Büro Serpentine Summer Pavilion, Peter Zumthor, 2011
<https://www.susana-ventura.com/material-experimentation>



„The experimentation never ends in the watercolour, but it crystallises, undoubtedly, determinate properties of the work, which are immutable. There is, almost always, in his watercolours, an implicit defined work and, in that moment, the initial image, which Zumthor seeks in each work, does not now have vague and unformed contours, but a body.”



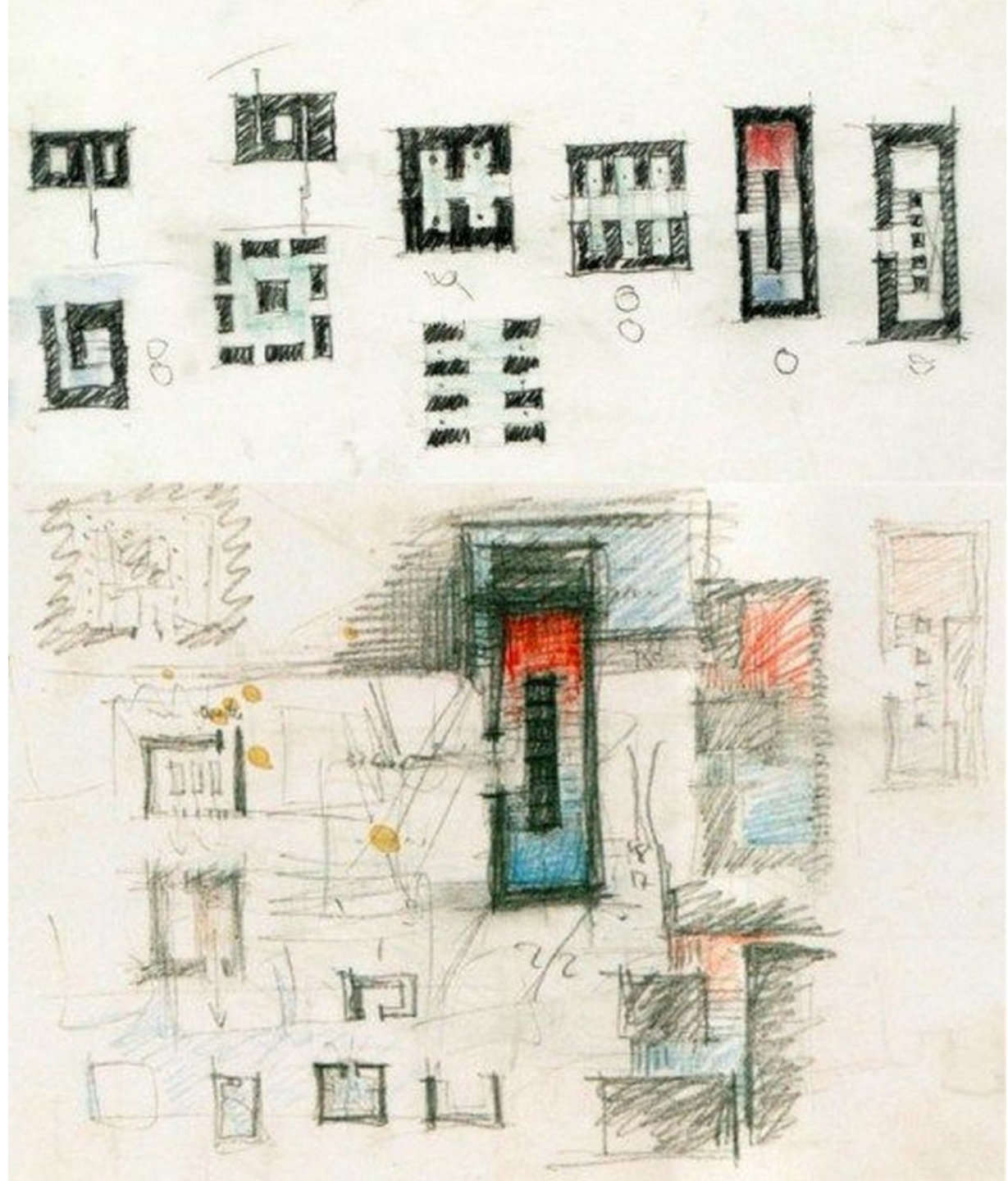
Drawing and atmosphere - Peter Zumthor's Sketches for Vals Therme

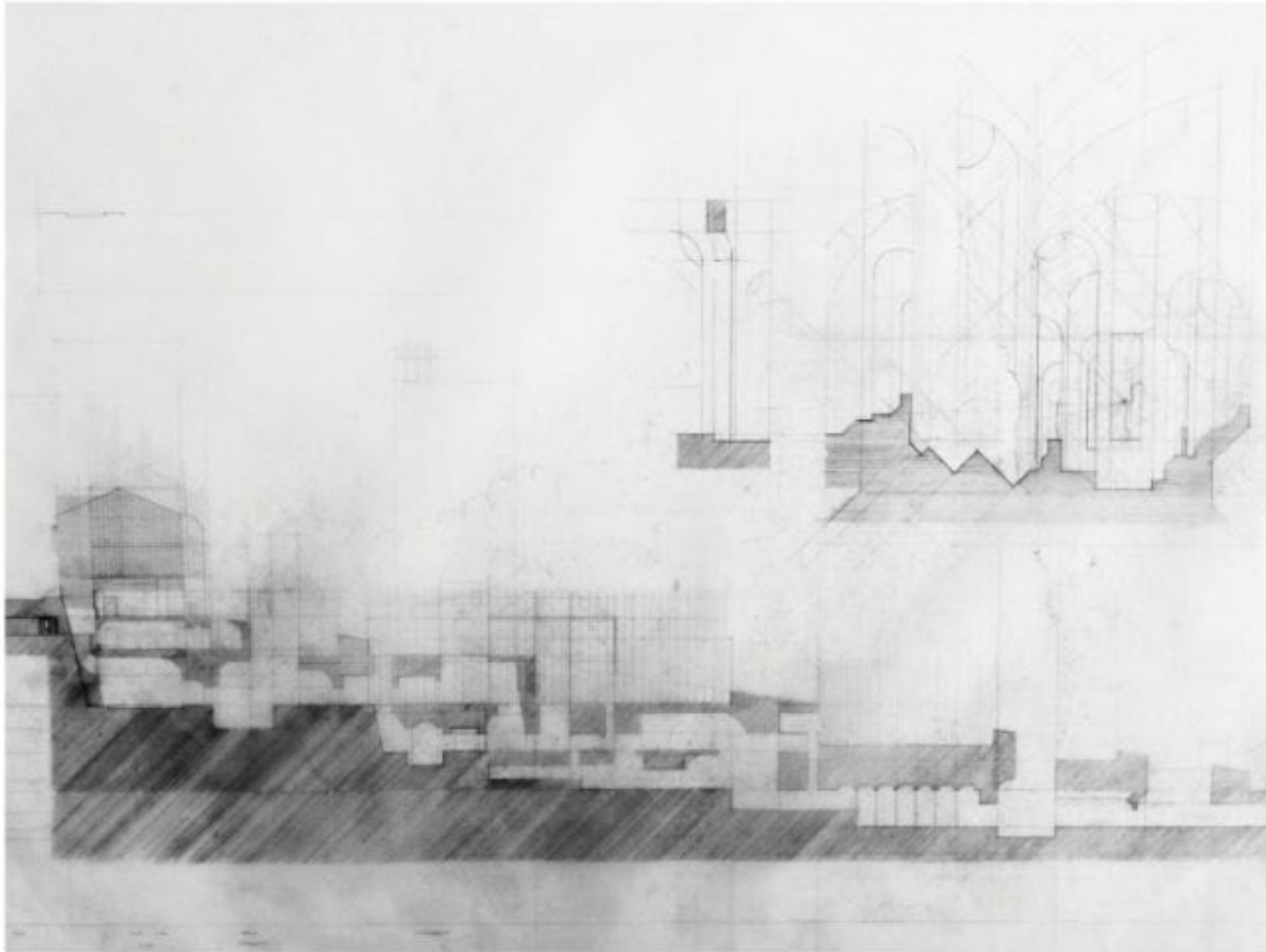
[https://www.researchgate.net/publication/318985526 Architectural notation and design process](https://www.researchgate.net/publication/318985526_Architectural_notation_and_design_process)

“Peter’s Zumthor’s masterpiece is a complex design composed of monolithic horizontal and vertical slabs; this composition creates a puzzling construction where its joins conserve eight centimeters of separation in between the slabs. This technique allows natural light to play with the roof rectangular blocks’ apertures, and it creates a mystic architectural momentum in the interior spaces. It is described as the moment when light and shade combine, and it generates a sublime atmosphere where the rhythm of silence is prevalent.”

Peter Zumthor’s Sketches for Vals Therme Spa;
Source: ©Architecturalogy.

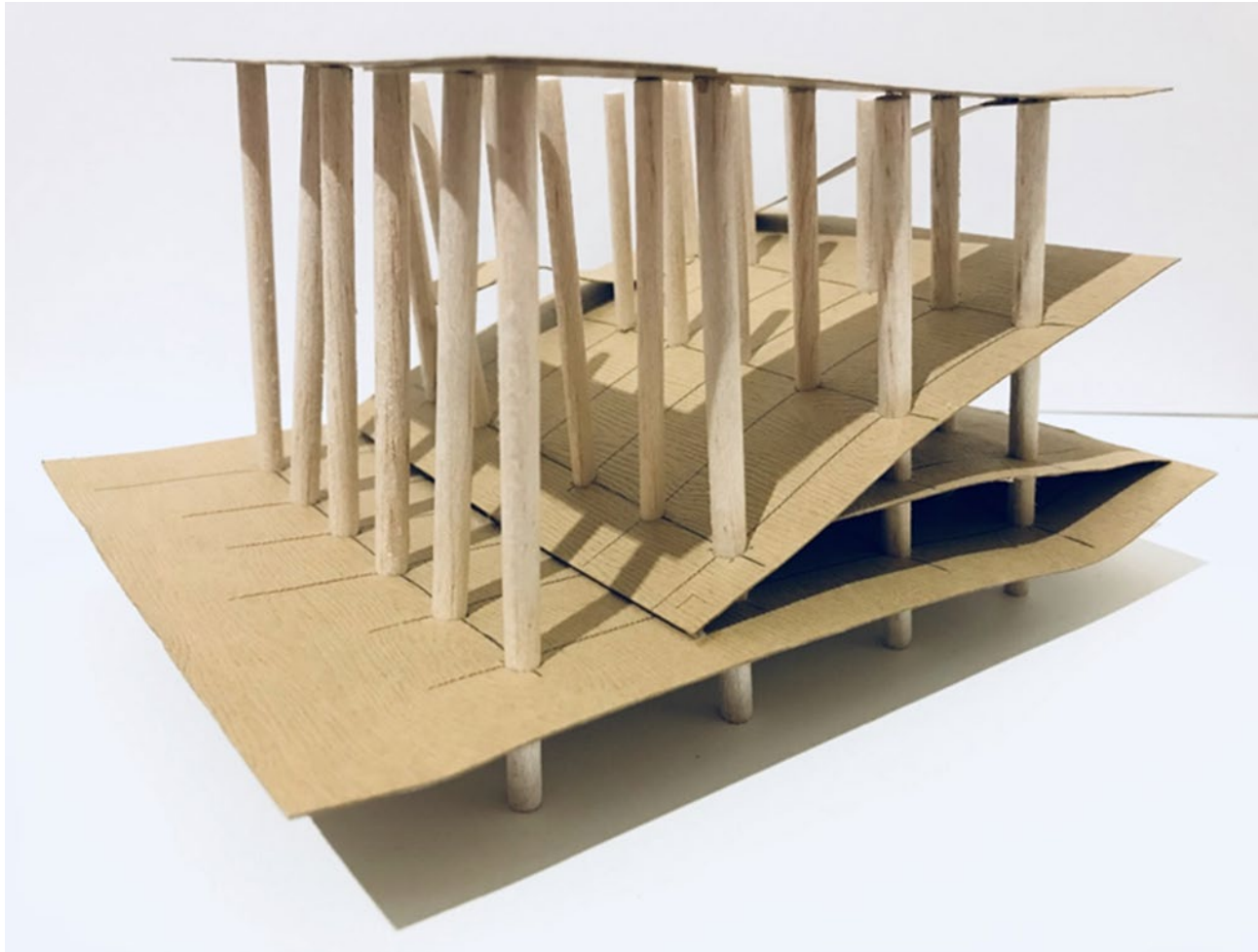
<https://www.re-thinkingthefuture.com/case-studies/a2530-therme-vals-spa-in-switzerland-by-peter-zumthor/>





Studying sectional development and circulation in relation to ground –
The Highgate Wake House –
KooZA/rch

<https://www.koozarch.com/interviews/the-highgate-wake-house/>



"In my fifth iteration, I used a different type of paper that has wood texture on it, and balsa wood rods. so for this iteration, I have started to get an idea of what my final model is going to look like, however, after finish this iteration I wanted to play with the idea of columns and slabs, so that is how the final iteration comes in."

Final model made by Phebe Lin

https://medium.com/@Lin_3193620/architectural-history-and-theory-orientations-bb428dde57a6



*Runner-up
High Commendation*

(Re)making_City
Part 2 Project 2009

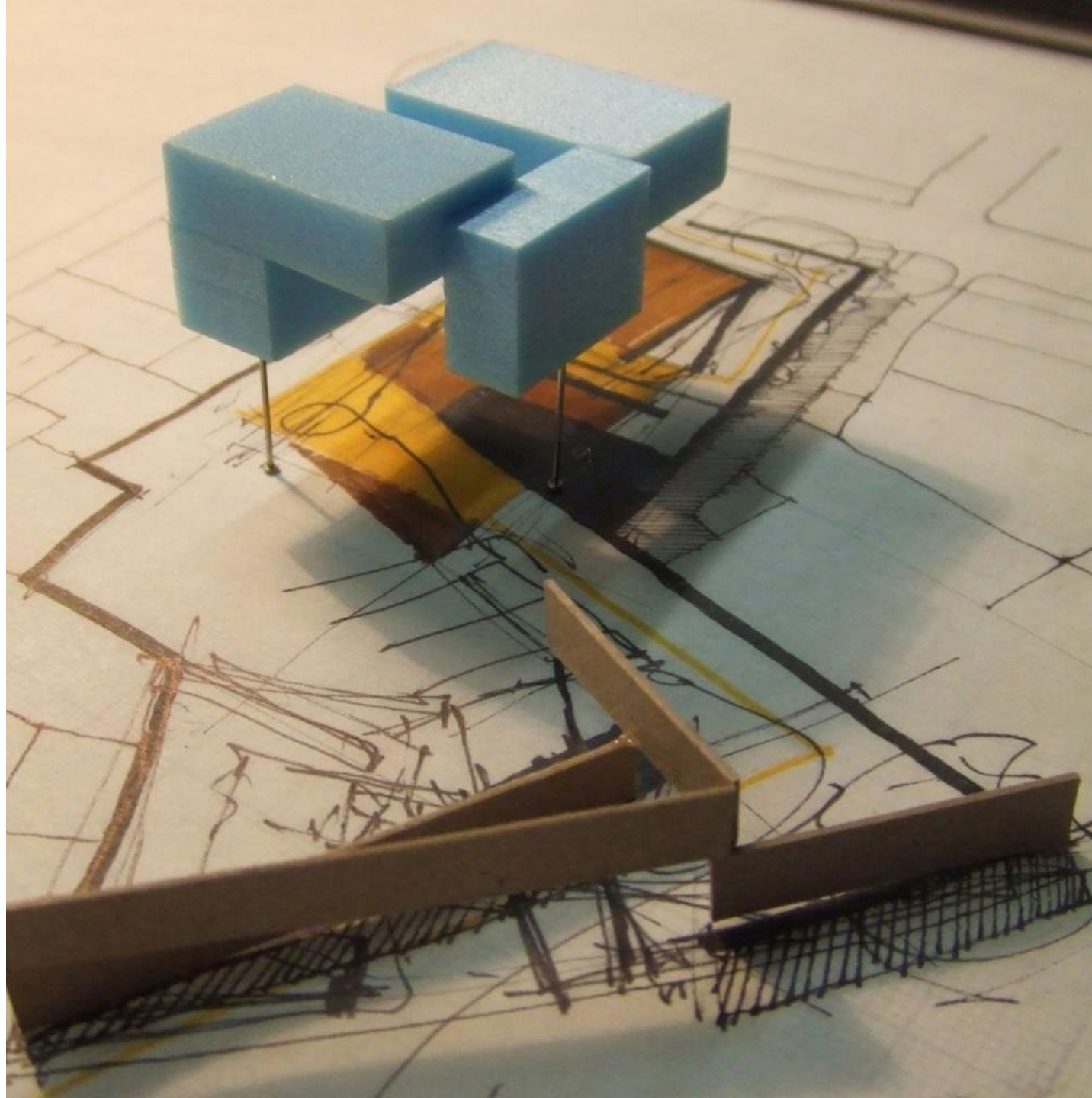
Paul Durcan

[University College
Dublin | Ireland](#)

FOLD

[http://www.presidents
medals.com/Entry-
24881](http://www.presidents
medals.com/Entry-
24881)

[http://www.presidents
medals.com/showcase/
2009/1/2488_08104003
709.jpg](http://www.presidents
medals.com/showcase/
2009/1/2488_08104003
709.jpg)

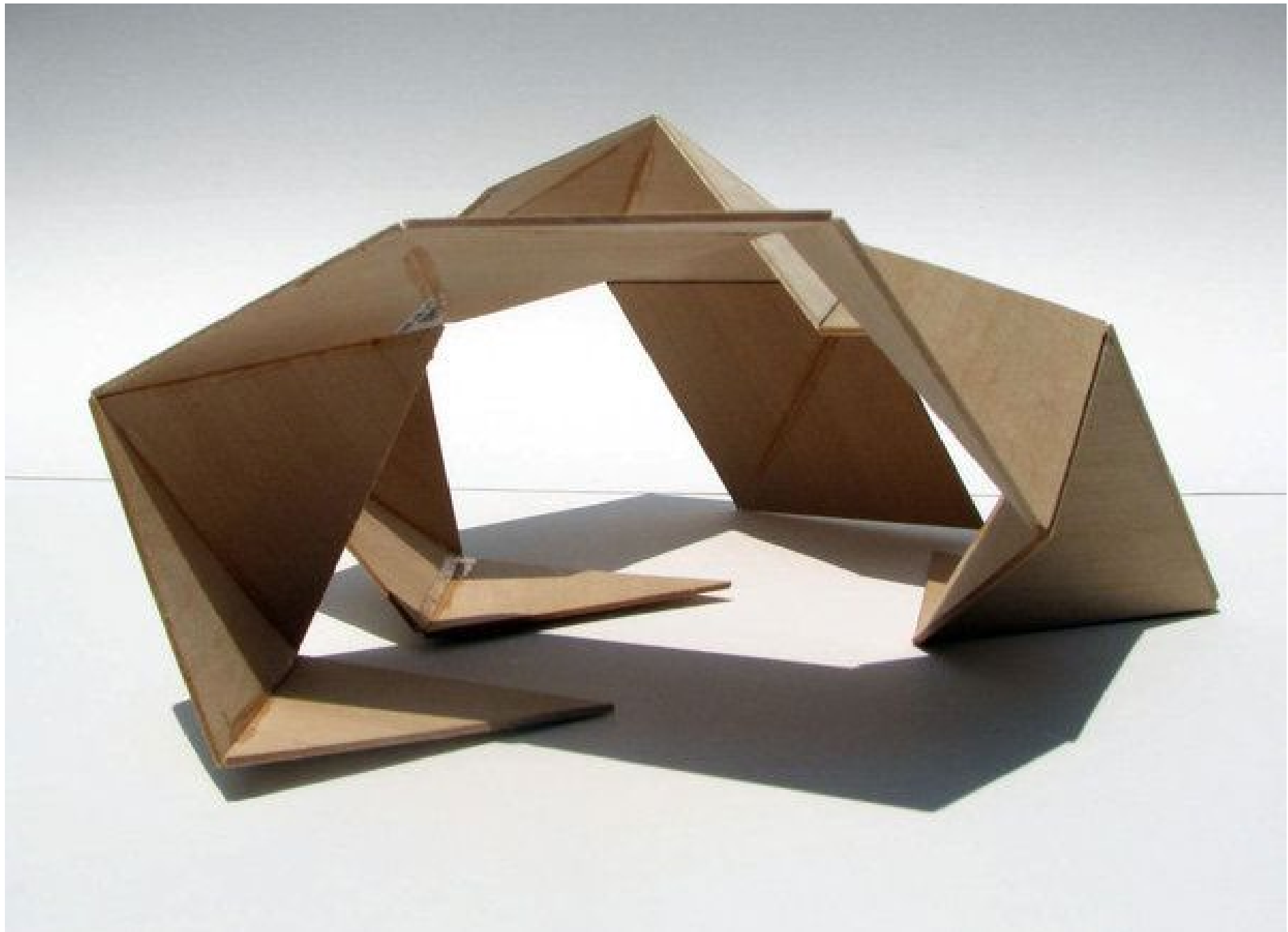


Working model

Working models go a step further in developing design ideas and solutions. The working model will have higher quality materials that reflect specification in design. They help us understand and communicate scale, form and materials.

<https://www.firstinarchitecture.co.uk/architectural-model-making-the-guide/>

<https://www.firstinarchitecture.co.uk/wp-content/uploads/2018/09/image-03.jpg>



[models architecture](#)

Tadao Ando
Church of the Light, Ibaraki, Osaka, Japan, 1984-89

Model: Tadao Ando Architect & Associates

Model material: Wood
Dimensions: 18.1 x 45.1 x 17.8 cm



[models architecture](#)

Tadao Ando
Church of the Light,
Ibaraki, Osaka, Japan,
1984-89

Model: Tadao Ando
Architect &
Associates

Model material:
Wood
Dimensions: 18.1 x
45.1 x 17.8 cm

