

Residency

precedents – structures in context



Herbst
Bach –
Aotea -
2001

NZIA Jury Citation : An experimental building that explores the romance of what is not needed in a house. It succeeds as a room, a veranda and minimal ablution facilities. Lockable cupboards and sliding screens directly deal with security and weathering. The result is the essence of a building and one that heightens ones' involvement with climate, place and company.

<https://herbstarchitects.co.nz/projects/herbst-bach>



Herbst Bach –
Aotea - 2001

Photographer
Jackie Meiring

<https://herbstarchitects.co.nz/projects/herbst-bach>



Photographer
Simon Devitt

<https://herbstarchitects.co.nz/projects/herbst-bach>



1. Entry
2. Living
3. Covered deck
4. Shower
5. WC
6. Kitchen
7. Bedroom
8. Outdoor bath
9. Workshop



Lance and Nicola first visited the Barrier in 1995 and bought land in 1999, shortly after moving permanently to New Zealand; they built the first part of the bach in little more than a month: a tower with a butterfly roof and a water tank on top of a little ablutions block – kitchen one side, bathroom the other – that opened out like a Swiss Army knife. It had an awning above a deck, and they cooked over an open fire and slept in a tent.

<https://homemagazine.nz/herbst-architects-bach-inside-out/>



*"Had I the heavens' embroidered cloths,
Enwrought with golden and silver light,
The blue and the dim and the dark cloths
Of night and light and the half light,
I would spread the cloths under your feet:
But I, being poor, have only my dreams;
I have spread my dreams under your feet;
Tread softly because you tread on my
dreams."*

- William Butler Yeats

"It had a way of leaving its mark on you, the house at Lyttelton, holding on tight of the hillside, in case of a quake), somehow wild still against the rugged backdrop. If the idea of home was measured in sunrises..." Heavens Embroidered Cloth, by Tessa Forde

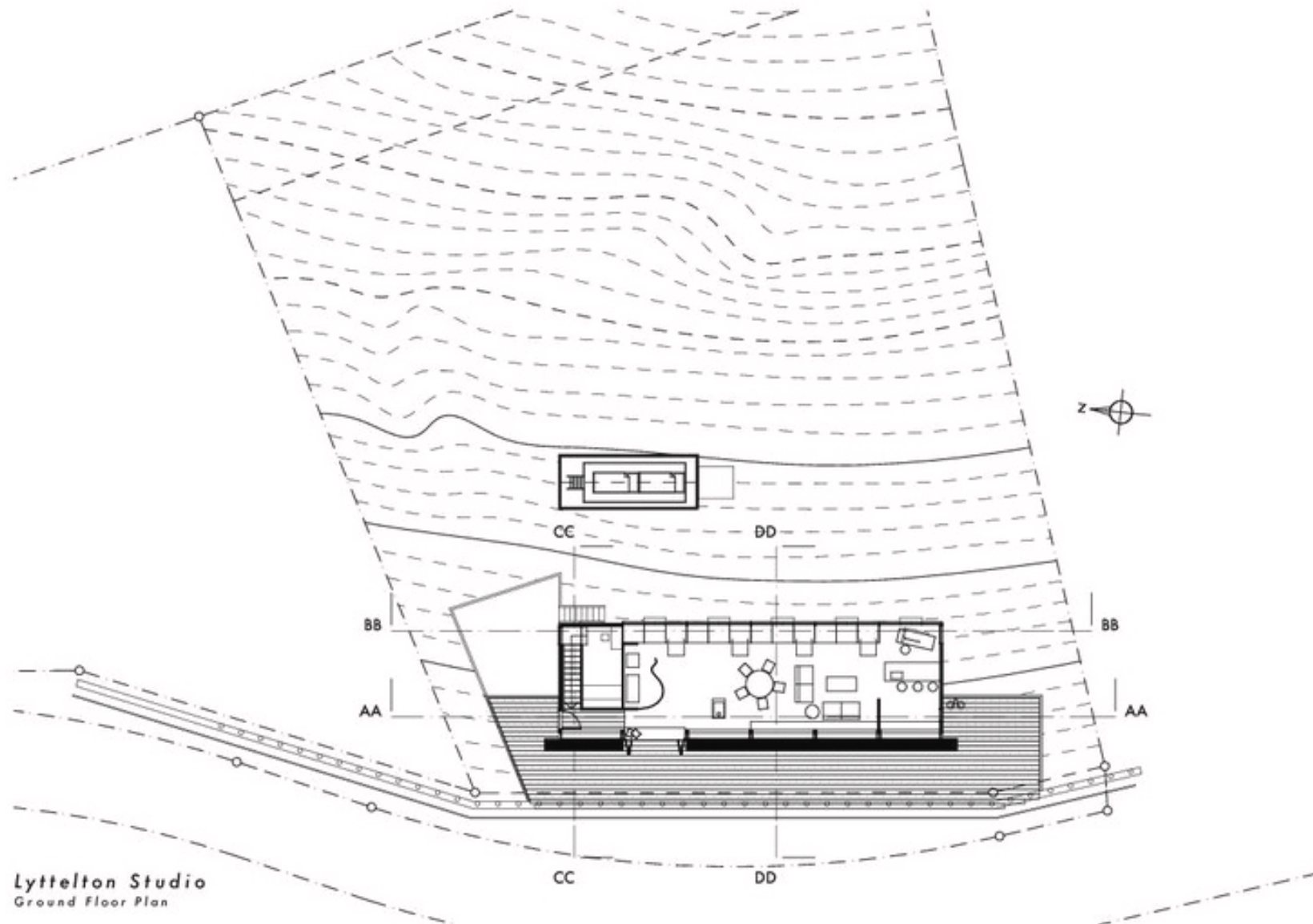
<https://www.bosarchitecture.co.nz/projects/walkers-road-office/>

Photographs : [Patrick Reynolds](#)

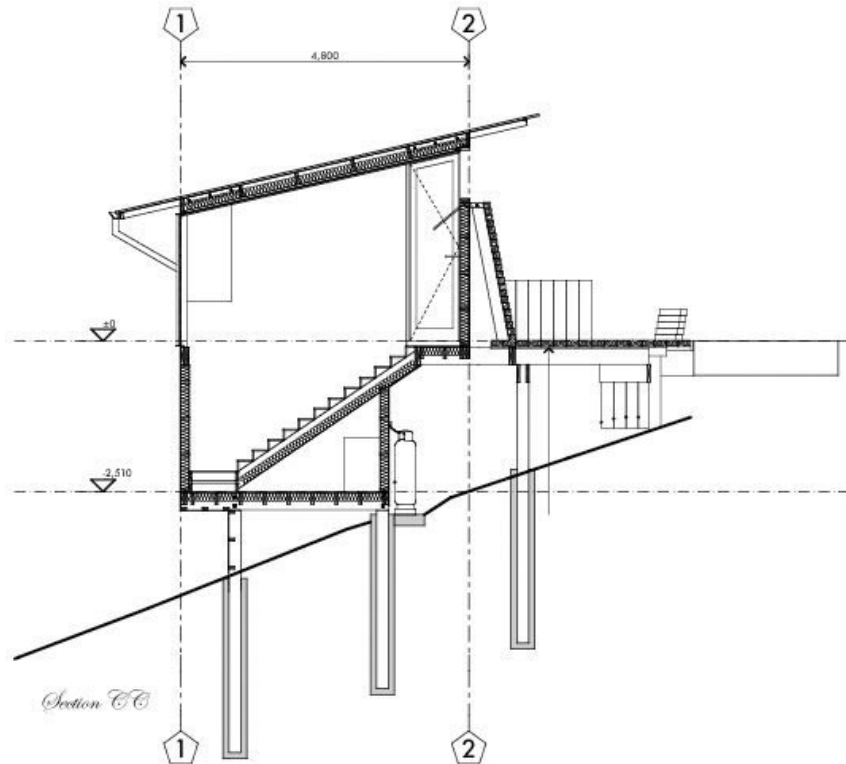


<https://www.bosarchitecture.co.nz/projects/walkers-road-office/>

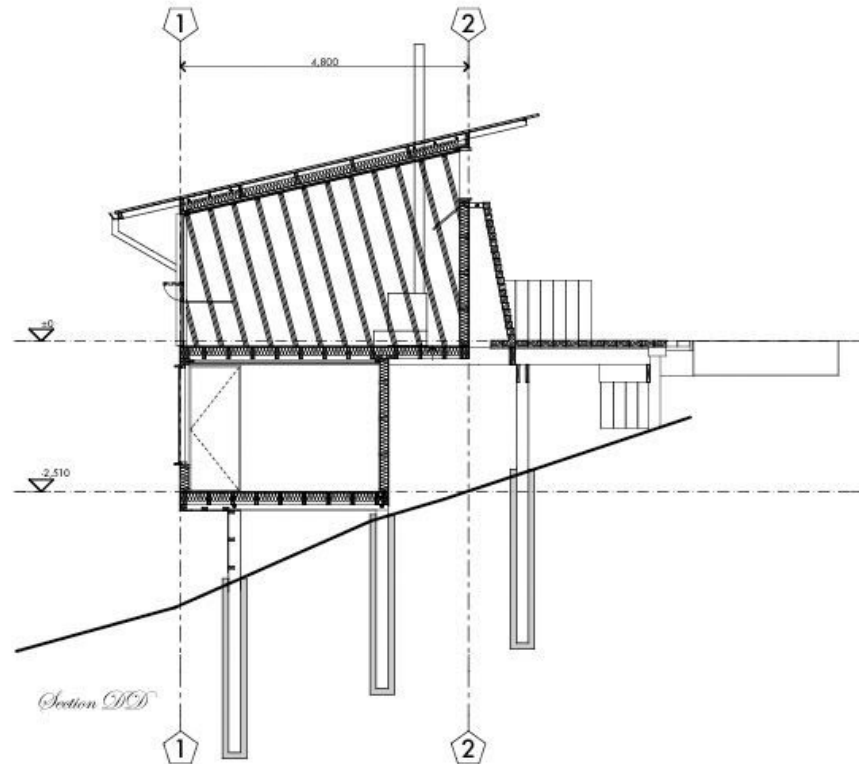




Lyttelton Studio
Ground Floor Plan



Section CC



Section DD



Above: A view of the hillside compound with the *bure* and the boathouse roofs peeking through the greenery.

Whale Bay – Pip Cheshire – 1995

<https://www.remodelista.com/posts/architect-visit-davis-bure-new-zealand-beach-house-by-pip-cheshire/>



Above: “The rafters are a basic truss arrangement made from *pinus radiata*, which New Zealand grows by the billion,” explains Cheshire. “The roof is intended to be expressive of the enclosure of the Pacific way of building—lots of smallish bits of wood supported on a few very big posts.”

Whale Bay – Pip Cheshire – 1995

<https://www remodelista.com/posts/architect-visit-davis-bure-new-zealand-beach-house-by-pip-cheshire/>



Above: Narrow kids' beds are slotted under the rafters—initially the whole family of six could sleep in the house. Note the inset clothing rod and clip-on overhead light.

Whale Bay – Pip Cheshire – 1995

<https://www.remodelista.com/posts/architect-visit-davis-bure-new-zealand-beach-house-by-pip-cheshire/>



Beside: The main room of the *bure* has a soaring ceiling and an open second story loft for sleeping. The floor is jarrah, a type of eucalyptus.

Whale Bay – Pip Cheshire – 1995

<https://www remodelista.com/posts/architect-visit-davis-bure-new-zealand-beach-house-by-pip-cheshire/>



Above: “In the islands woven mats are used on the windward side between the columns to enclose the form and provide shelter, but our somewhat more temperate climate meant we used timber frame infill with big openings to capture the horizontal views out,” Cheshire says. The louvered walls are made of *macrocarpa*, a California pine introduced to New Zealand in the 19th century.

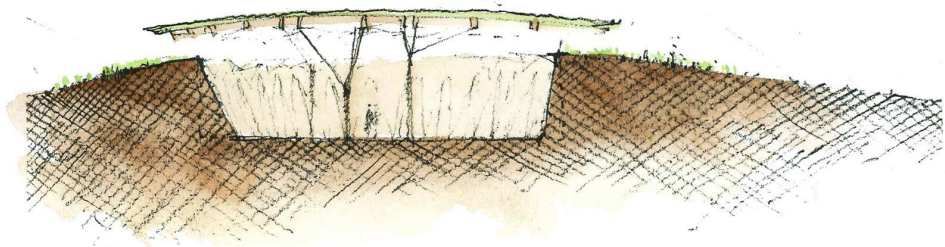
Whale Bay – Pip Cheshire – 1995 <https://www.remodelista.com/posts/architect-visit-davis-bure-new-zealand-beach-house-by-pip-cheshire/>



Beside: The communal bathroom is made of concrete crowned with a prefabricated, galvanized iron structure. It's located on the uphill side of the boathouse and has two sinks and two showers. The east side wall features a garage door that opens to offer bathers a view of a crescent-shaped bay, plus a few houses, and a shop—"not for the modest," notes Cheshire.

Whale Bay – Pip Cheshire – 1995

<https://www.remodelista.com/posts/architect-visit-davis-bure-new-zealand-beach-house-by-pip-cheshire/>



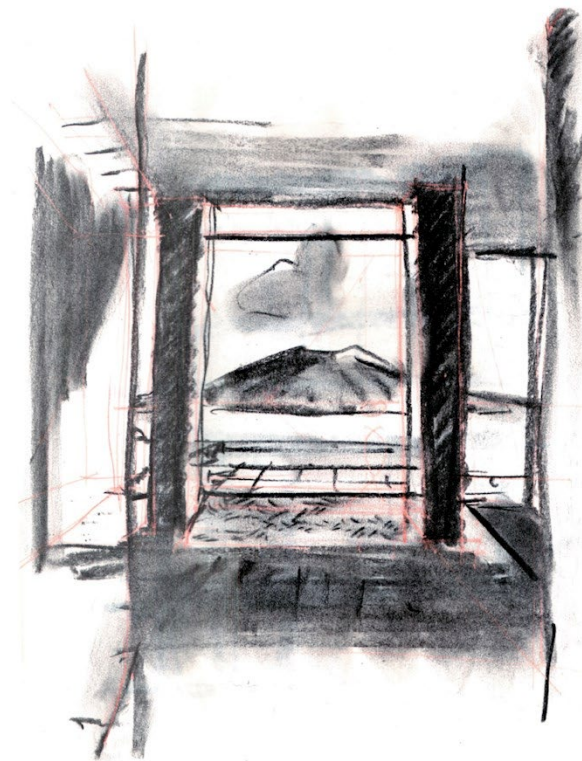
Marsden Cross Visitor Centre, section
Drawing by Pip Cheshire



Catlins beach access
Drawing by Pip Cheshire



Davis Fale, sketch
Sketch by Pip Cheshire

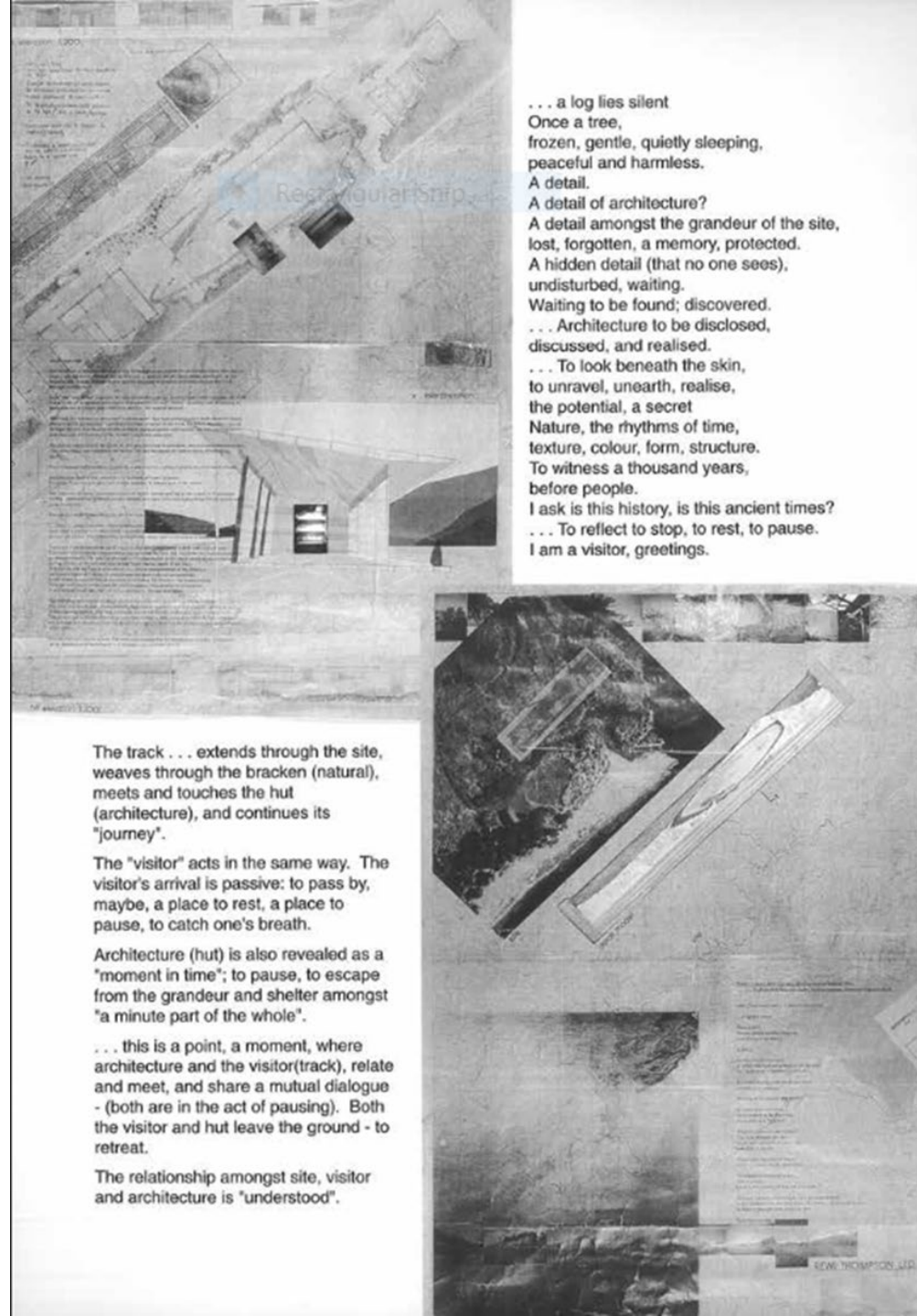


Congreve House
Drawing by Pip Cheshire

Wishart House, Hokianga – Rewi Thompson

1995 Interstices – Wishart House:
Hokianga

<https://ojs.aut.ac.nz/interstices/index.php/Interstices/issue/view/19/20>

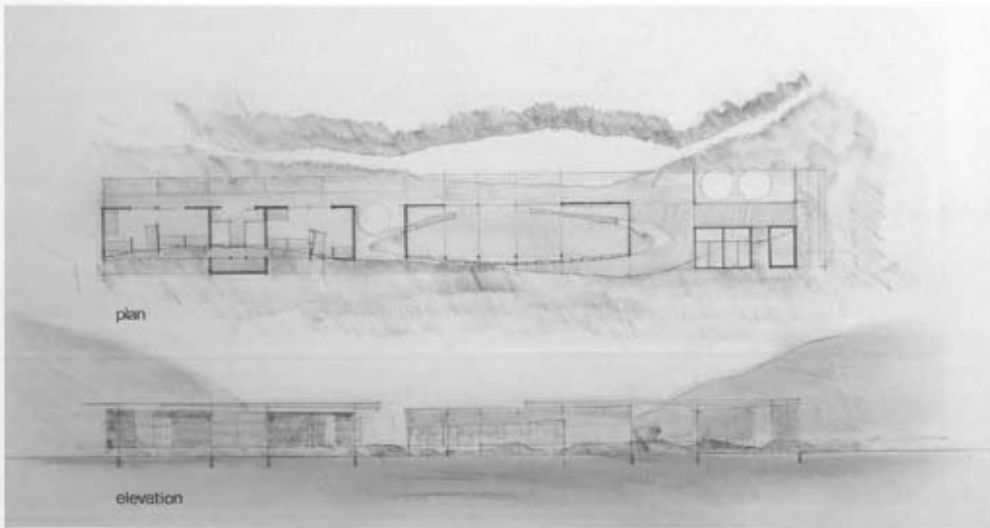
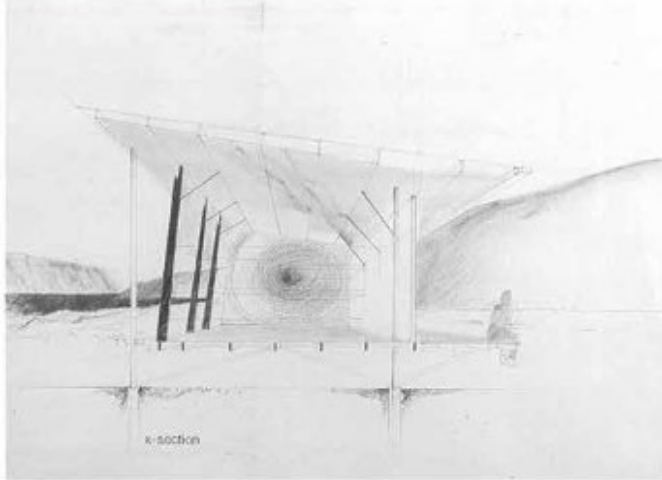


REWI THOMPSON

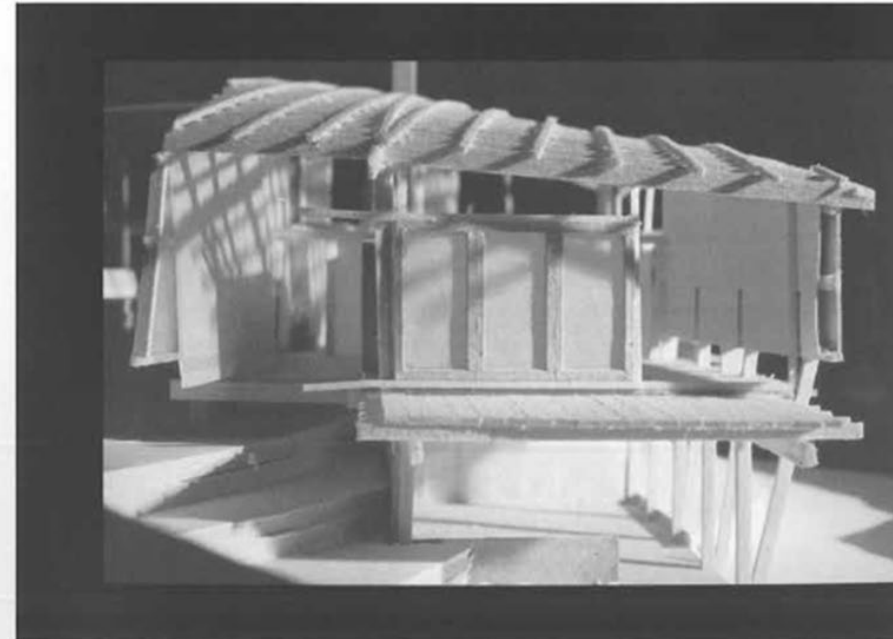
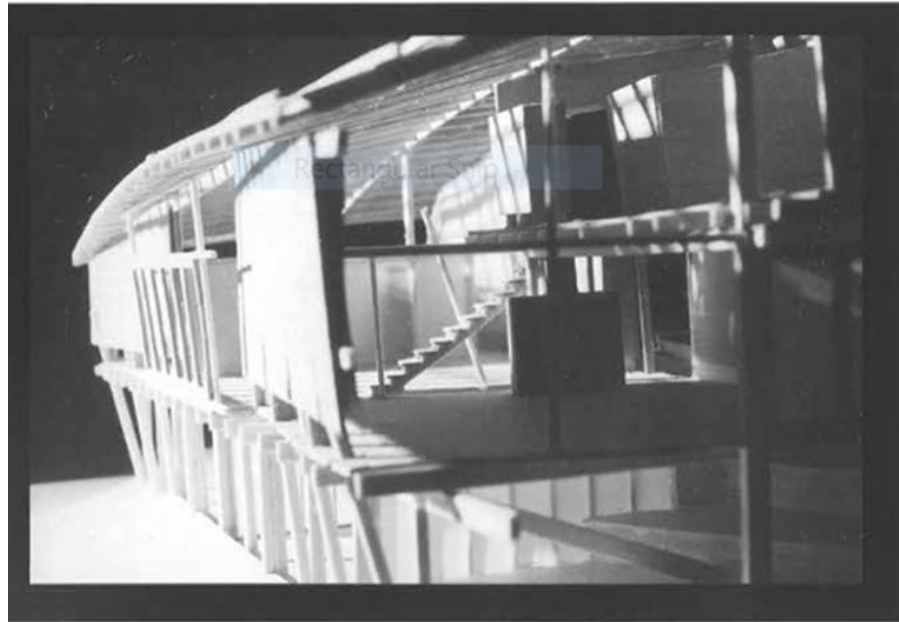
**Carter Holt Harvey
Environmental Award
Registered Architect
First Place 1994**

photography Lynn Logan

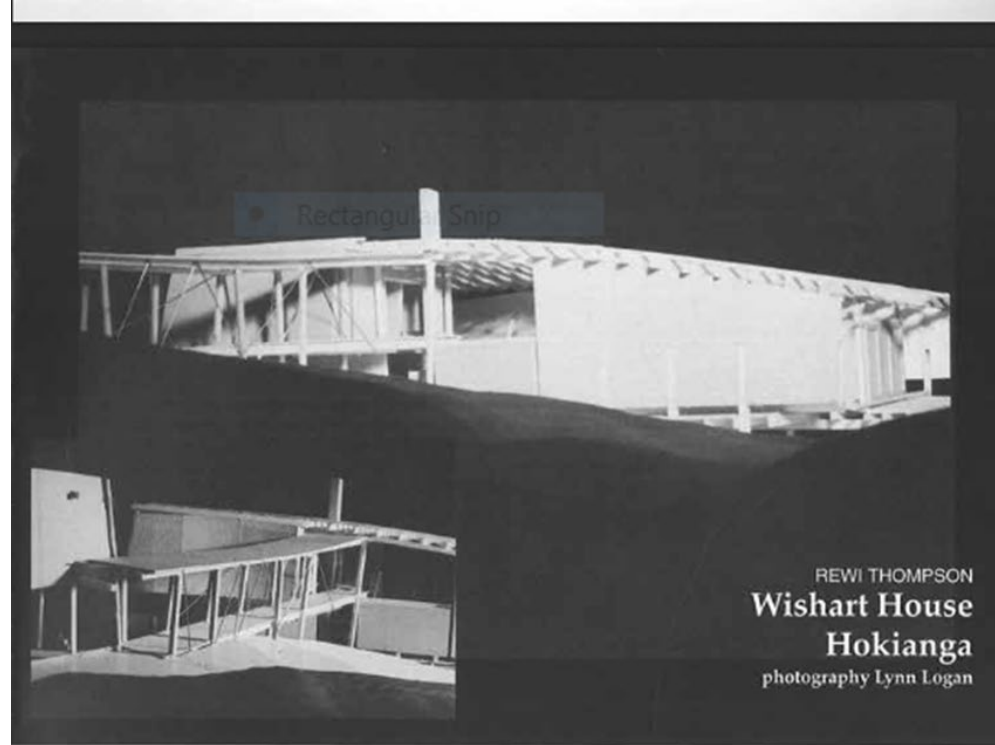
Rectangular Snip



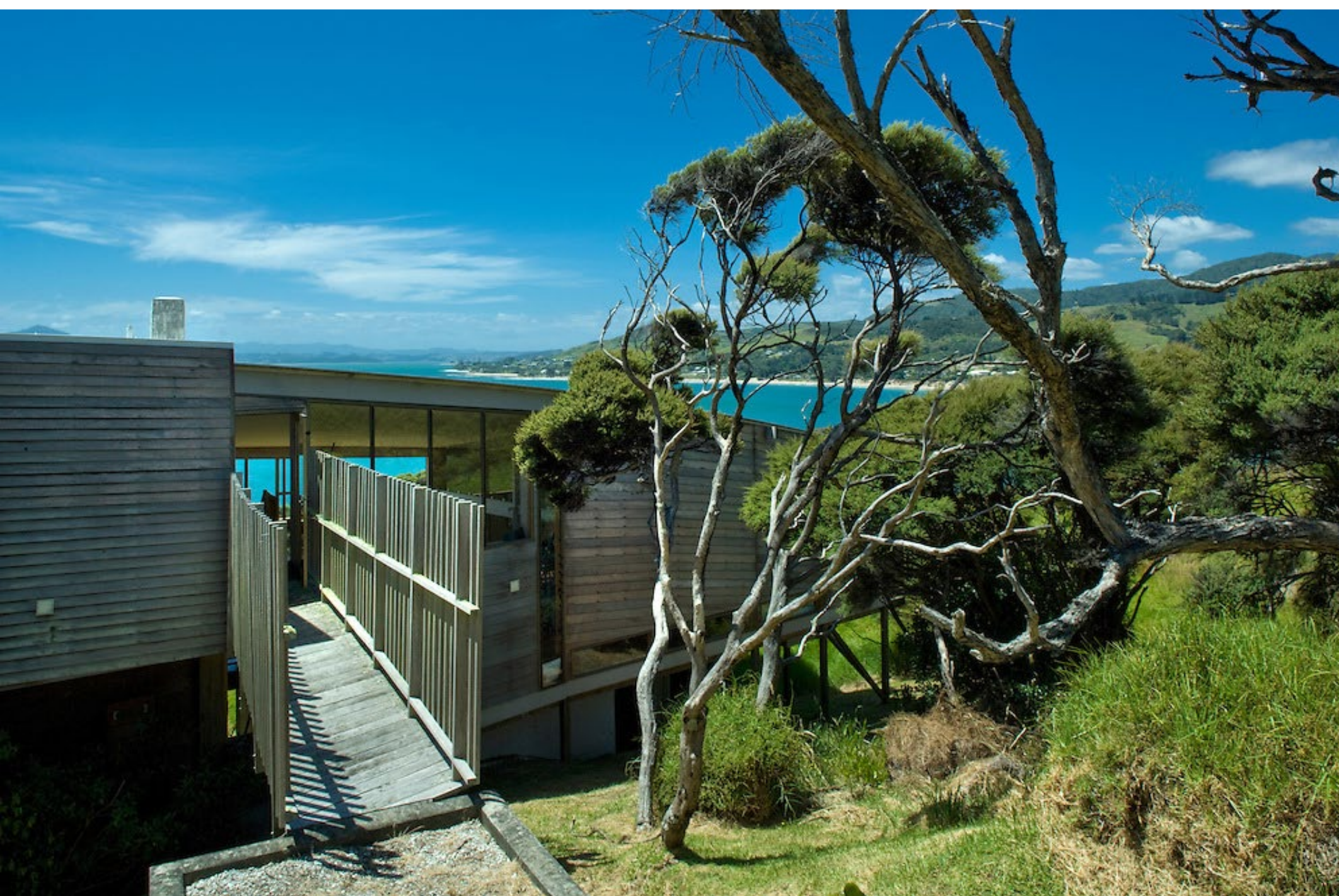
101 ■ 102



Wishart
House,
Hokianga –
Rewi
Thompson
1995
Interstices –
Wishart
House:
Hokianga
<https://ojs.aut.ac.nz/interstices/index.php/Interstices/issue/view/19/20>



Wishart
House,
Hokianga –
Rewi
Thompson
1995
Interstices –
Wishart
House:
Hokianga
<https://ojs.aut.ac.nz/interstices/index.php/Interstices/issue/view/19/20>



Filename
wishart_house_1.jpg
Copyright
Andy Spain Photography
Image Size
4868x3208 / 10.4MB
Web Statement URL
www.asvisual.co.uk



Filename

hokianganz2010.jpg

Copyright

(C) Andy Spain

Asvisual.co.uk andy spain

Image Size

4992x3328 / 8.1MB

Web Statement URL

www.asvisual.co.uk



The Wishart house at Omapere in the Hokianga Harbour was designed by architect Rewi Thompson. It has a strong connection to the land and the sea.
<https://www.stuff.co.nz/life-style/homed/latest/126898157/designing-dreams-architect-nicholas-dalton-takes-us-on-a-bicultural-journey>

Designing Dreams

https://www.skygo.co.nz/watch/mac_sh_100885/mac_11416793?playbackOrigin=Content%20All%20Episodes&playerReferrer=Content%20Details



Richard Leplastrier -Framing the View, directed by: Anna Cater. Doc Edge Festival 2020

Trailer – Richard Leplastrier – Framing the View

<https://www.youtube.com/watch?v=87CCyyy6UB8>



Belonging - Glenn Murcutt

103.958 visualizzazioni • 2 gen 2019

👍 2016 💬 39 ➦ CONDIVIDI ≡ SALVA ⋮

Belonging - Glenn Murcutt

Glenn Murcutt

<https://www.youtube.com/watch?v=QYEbgU7xZHA&t=76s>