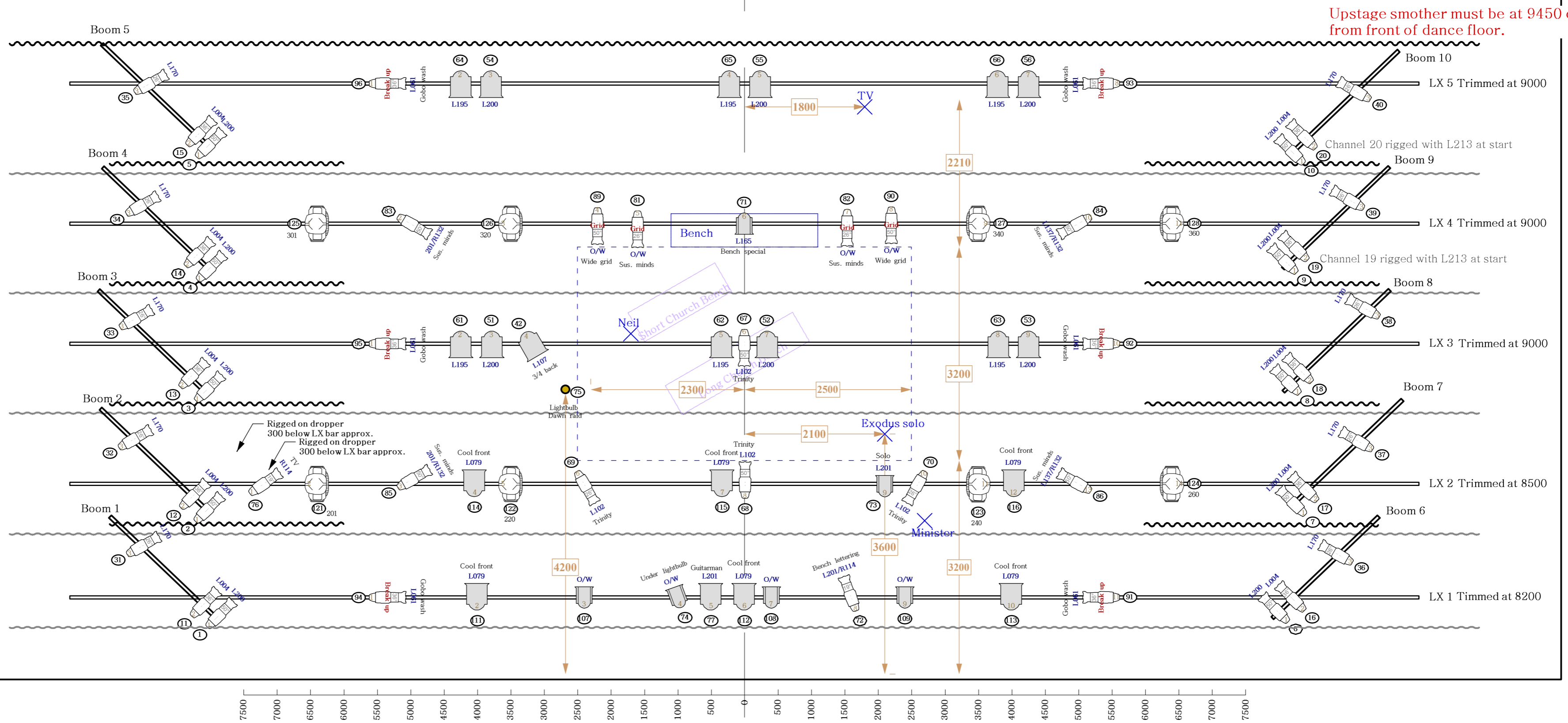


Instruments	Num In Inventory	Used	Remaining
Source 4 36deg	0	16	-16
Studio Command	0	8	-8
Source 4 26deg	0	19	-19
Arena 2k Fresnel	0	20	-20
Source 4 50deg	0	20	-20
1200w Fresnel	0	11	-11
Source 4 19deg	0	2	-2
Lightbulb	0	1	-1

Legend	
	Purpose
	Color
	Unit Number
	Channel
	Dimmer

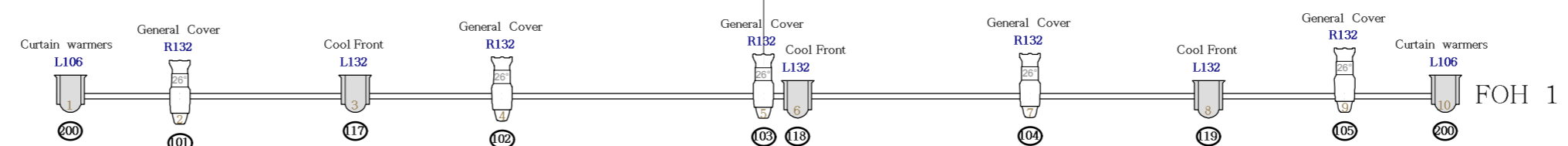


NOTES:  
 All Fresnels & PCs to be rigged with barn doors & spotted.  
 Lightbulb is toured.  
 Moving Lights to be rigged with display facing US.  
 Heights of lamps on booms to centre of lens are:  
 Unit 1 - 150mm  
 Unit 2 - 600mm  
 Unit 3 - 2000mm  
 Trim heights on LX bars are approximate.  
 Channel 87 & 88, by boxes to be rigged with lens at height of front stage.  
 Break up gobo is A643 Moon breakup - 'A' size.  
 Grid gobo is Rosco 8048 Weave - 'B' size.  
 Haze and smoke are used on stage.  
 L213 is swapped for colour in PS boom lights, channels 17 through 20.  
 All colour is Lee filters except for frost.  
 Soft underfloor is 9m deep (5 pieces) or 10.8m deep (6 pieces),  
 depending on stage depth and position of smother.

SPIKE MARKS - All measurements (mm) taken from Centre Line and Downstage Edge.

DC edge positions: DC position, 3m SR position, 3m SL position.

CS position:	4750 US	0
Solo Special (Exodus migration):	3600 US	2100 SL
Minister Special:	2300 US	2700 SL
TV Special:	8610 US	1800 SL
Neil (Dawn Raids under lightbulb):	4200 US	2300 SR
Neil Special:	5100 US	1700 SR
USC (Sick) Bench Special:	6900 US	1100 SL
	6900 US	1100 SR
US Short Church Bench:	5350 US	1800 SR
	6300 US	280 SR
DS Long Church Bench:	4280 US	1180 SR
	5440 US	710 SL



Upstage smother must be at 9450 or less from front of dance floor.

SHOW: Gathering Clouds

COMPANY: Black Grace

VENUE: Touring Plan

CHOREOGRAPHER: Neil Ieremia

DESIGNER: Peter Langford

LD: Nik Janiurek

Tel: +64 21 166 4437, janiurek@ihug.co.nz

Date drawn: 30/4/09 Version 1.2

Scale: 1 : 50 at A2 size