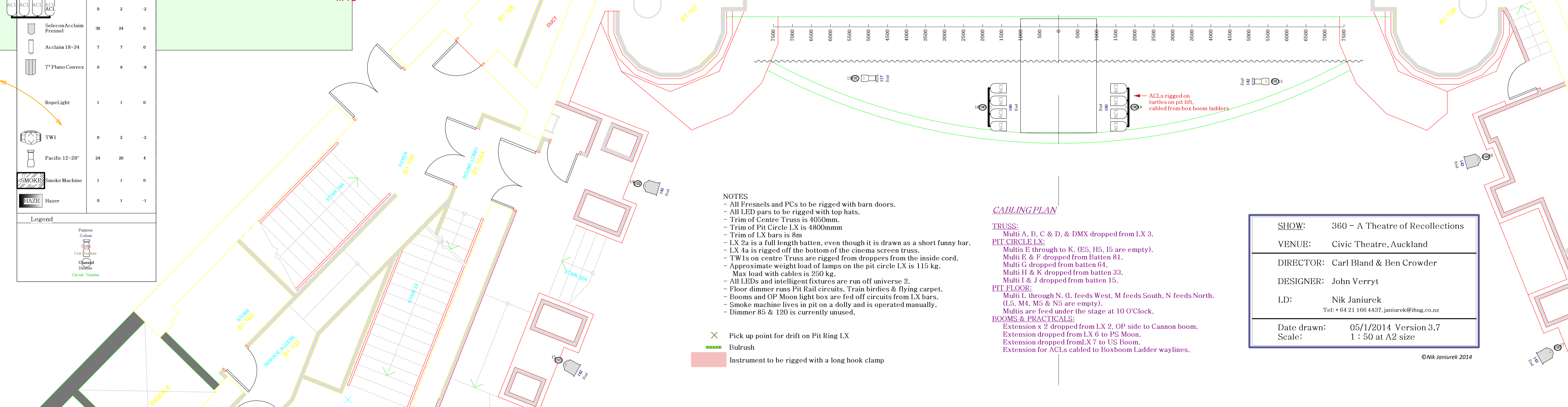
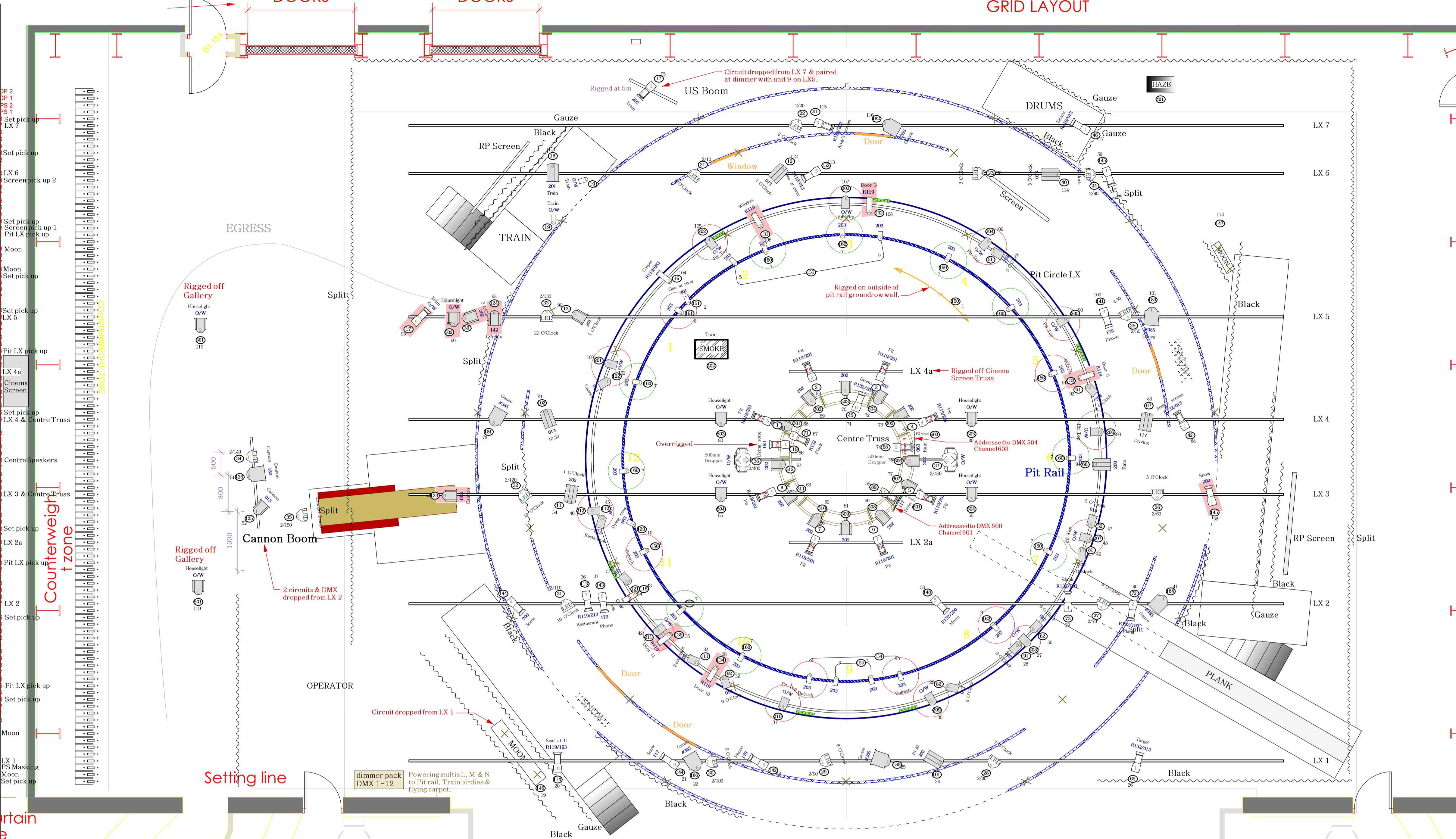


Instruments	Num In Inventory	Used	Remaining
MOON Lightbox	1	1	0
MOON Lightbox	1	1	0
Pacific 23-50"	16	14	2
Arena High Performance Fresnel 245mm	11	11	0
LED Multipar 20"	14	15	-1
1200 Range Fresnel	20	24	-4
ACI ACI ACI ACI	0	2	-2
Solecon Acclaim Fresnel	30	24	6
Acclaim 18-34	7	7	0
7" Plano Convex	0	8	-8
RopeLight	1	1	0
TW1	0	2	-2
Pacific 12-28"	24	20	4
SMOKE Smoke Machine	1	1	0
HAZE Hazer	0	1	-1

Legend	Colour	Symbol	Meaning
Propose	Blue	Circle with dot	Propose
Used	Red	Solid circle	Used
Dimmer	Green	Square	Dimmer
Circuit Number	Yellow	Circle with number	Circuit Number



NOTES

- All Fresnels and PCs to be rigged with barn doors.
- All LED bars to be rigged with top hats.
- Trim of Centre Truss is 4050mm.
- Trim of Pit Circle LX is 4800mm.
- Trim of LX bars is 8m
- LX 2a is a full length batten, even though it is drawn as a short funny bar.
- LX 4a is rigged off the bottom of the cinema screen truss.
- TW1s on centre Truss are rigged from droppers from the inside cord.
- Approximate weight load of lamps on the pit circle LX is 115 kg.
- Max load with cables is 250 kg.
- All LEDs and intelligent fixtures are run off universe 2.
- Floor dimmer runs Pit Rail circuits, Train birds & flying carpet.
- Booms and OP Moon light box are fed off circuits from LX bars.
- Smoke machine lives in pit on a dolly and is operated manually.
- Dimmer 85 & 120 is currently unused.

CABLING PLAN

TRUSS:
Multi A, B, C & D, & DMX dropped from LX 3.

PIT CIRCLE LX:
Multi E through to K. (E5, H5, I5 are empty).
Multi G dropped from batten 64.
Multi H & K dropped from batten 33.
Multi I & J dropped from batten 15.

PIT FLOOR:
Multi L through N. (L feeds West, M feeds South, N feeds North).
(L5, M4, M5 & N5 are empty).
Multis are feed under the stage at 10 O'Clock.

BOOMS & PRACTICALS:
Extension x 2 dropped from LX 2, OP side to Cannon boom.
Extension dropped from LX 6 to PS Moon.
Extension dropped from LX 7 to US Boom.
Extension for ACLs cabled to Boxboom Ladder waylines.

SHOW:	360 - A Theatre of Recollections
VENUE:	Civic Theatre, Auckland
DIRECTOR:	Carl Bland & Ben Crowder
DESIGNER:	John Verryt
LD:	Nik Janiurek Tel: +64 21 166 4437, janiurek@ihug.co.nz
Date drawn:	05/1/2014 Version 3.7
Scale:	1 : 50 at A2 size