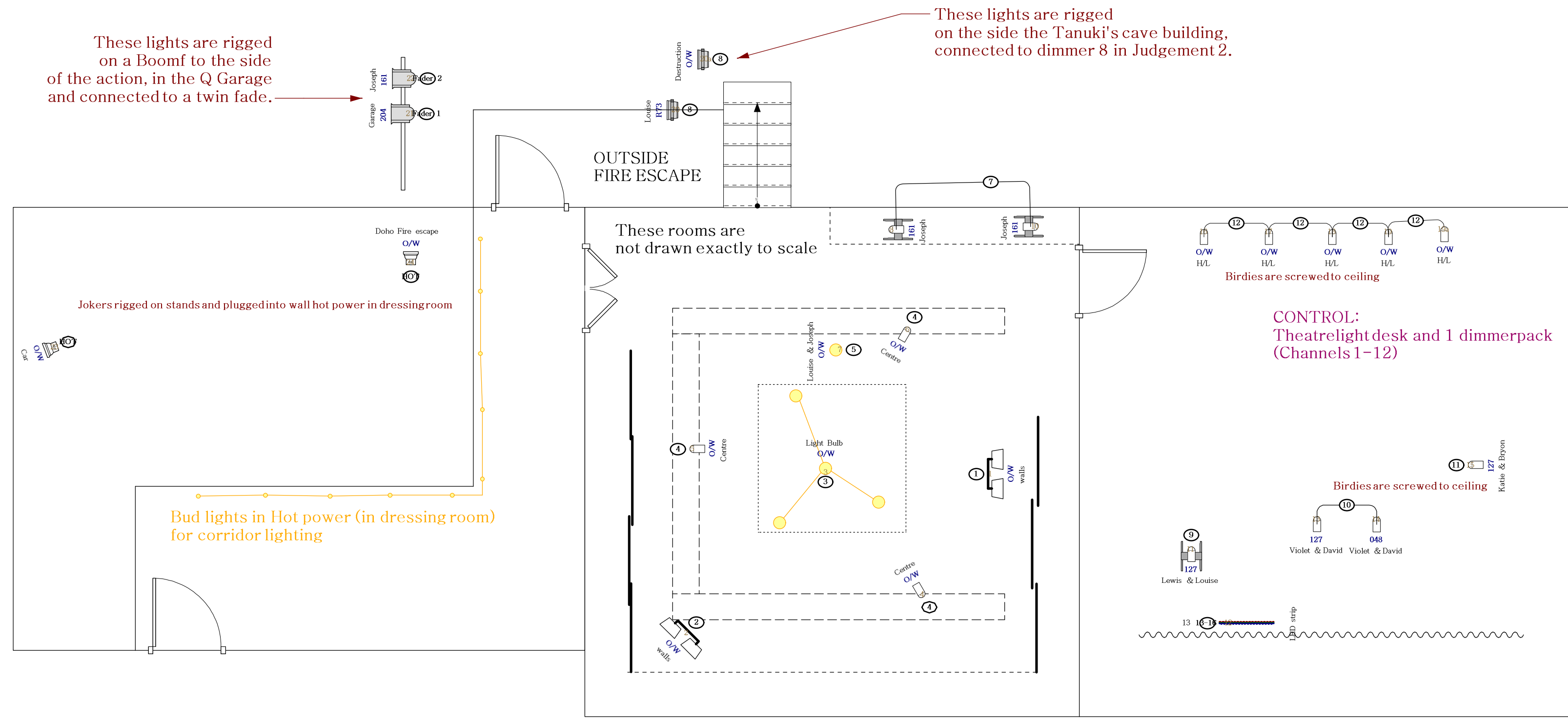


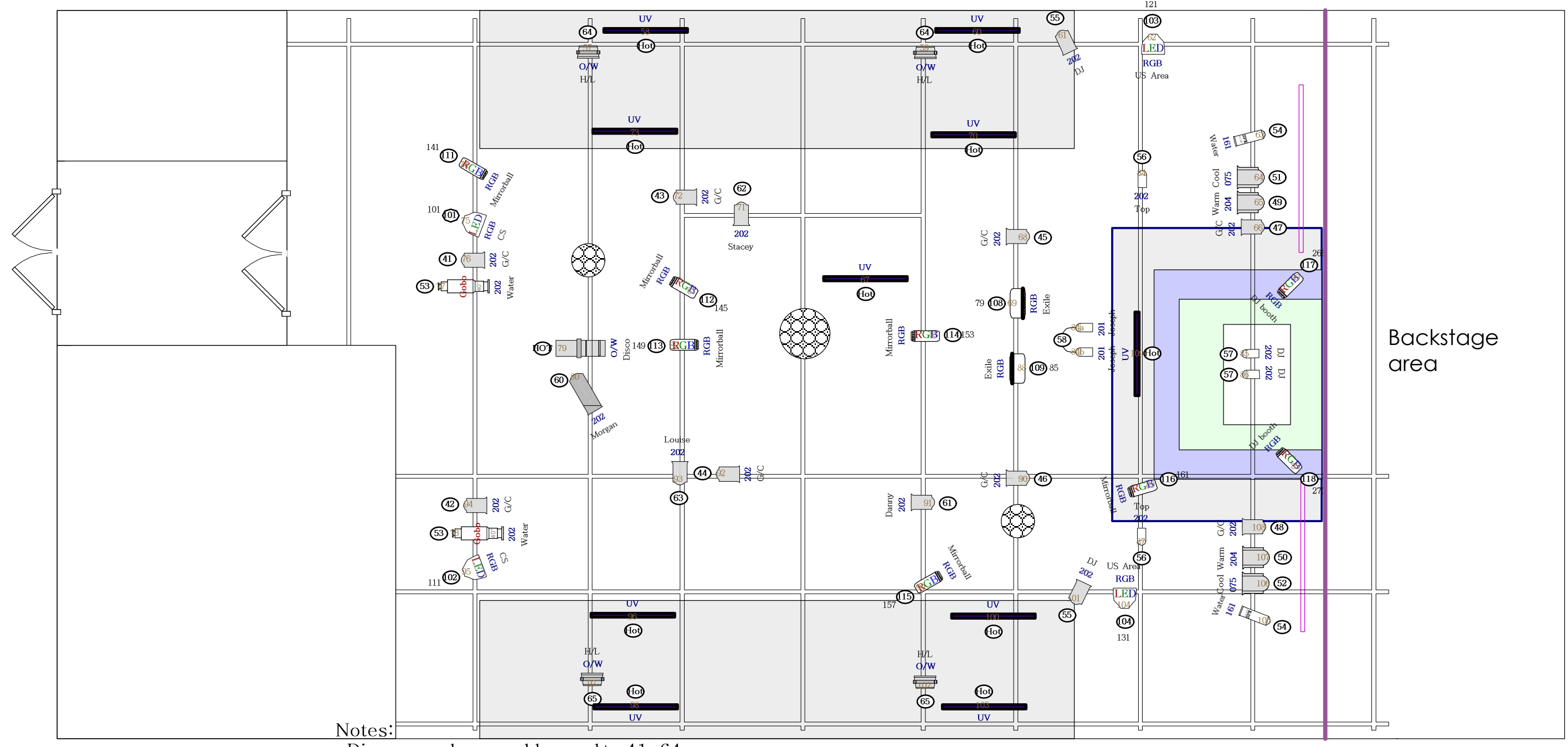
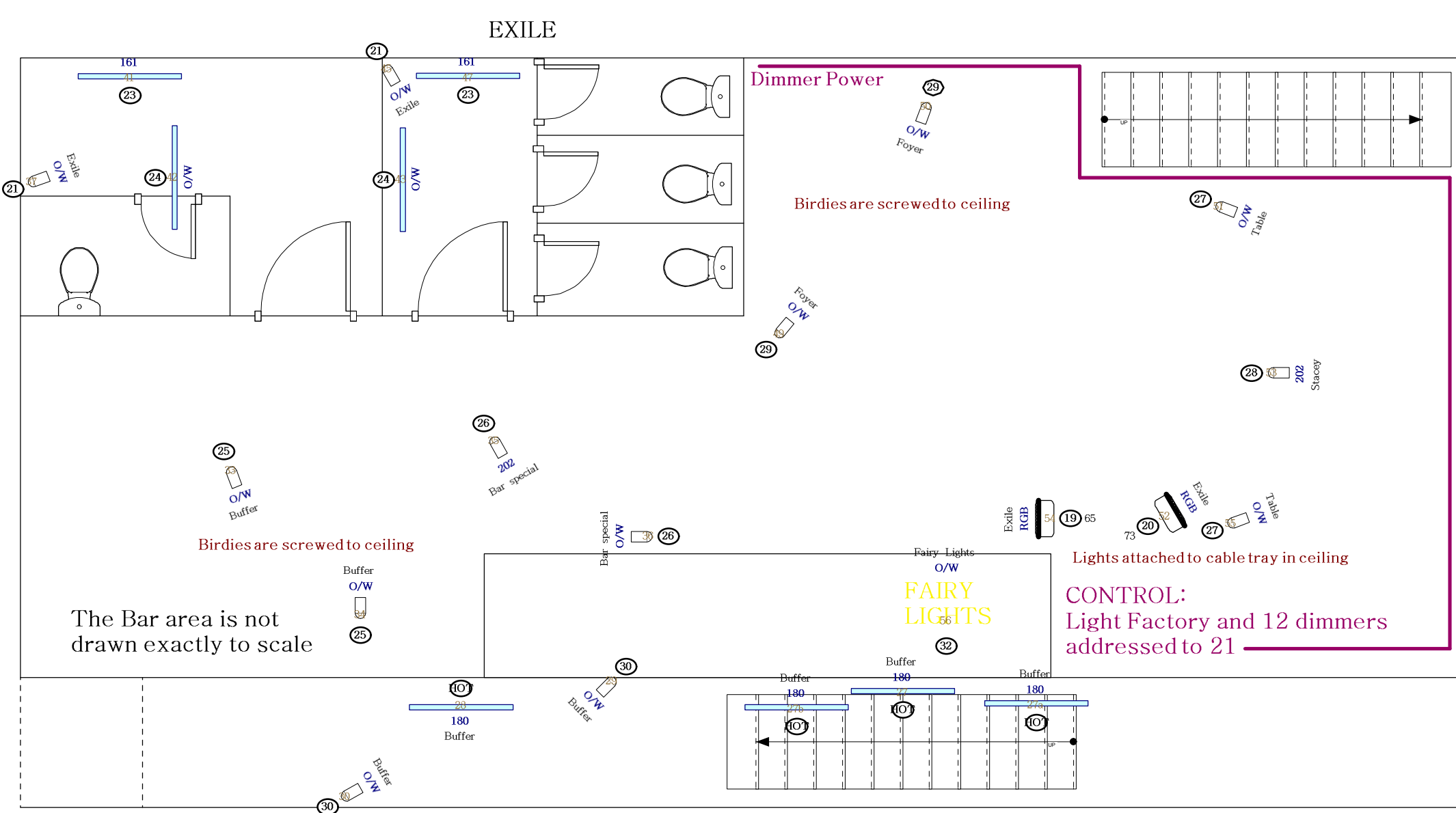
Instruments	Num In Inventory	Used	Remaining
Birdie	40	31	9
Shakespeare 40leg	2	2	0
1200 Range Fresnel	6	6	0
500w Flood	10	6	4
Worklight	2	2	0
Fluorescent Tube	16	8	8
ARRILLITE 800	2	2	0
SPX	0	2	-2
FAIRY LIGHTS			
Fairy lights	0	1	-1
Colour Blast	4	4	0
Selecon Acclaim Fresnel	16	13	3
Light Bulb	0	2	-2
Acclaim Condenser 24-44"	2	1	1
LED Strip	2	1	1
12V Fluorescent Tube	10	10	0
LED Multipar 12FC	4	4	0
ImageScan	1	1	0
LED Pinspot	0	8	-8

Legend	Purpose
	Colour
	Gobo 1
	Unit
	Control
	DMX



JUDGEMENT ROOM 1

JUDGEMENT ROOM 2



SHOW:	Like There's no Tomorrow
VENUE:	The Basement
DIRECTOR:	Robin Kerr & Eleanor Bishop
DESIGNER:	Jessika Verryt
LD:	Nik Janiurek Tel: +64 21 388 8623, nikjan@bbag.co.nz
Date drawn:	29/7/2013 Version 3
Scale:	1:50 at A2 size