

Architect's Pocket Book

Charlotte Baden-Powell

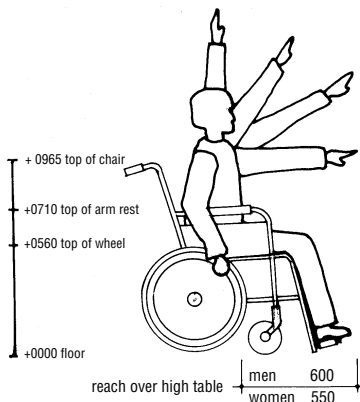
Second edition



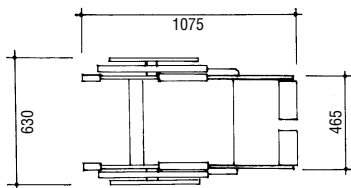
Architectural Press

OXFORD AMSTERDAM BOSTON LONDON NEW YORK PARIS
SAN DIEGO SAN FRANCISCO SINGAPORE SYDNEY TOKYO

Wheelchairs



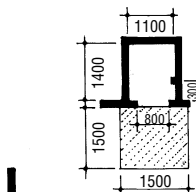
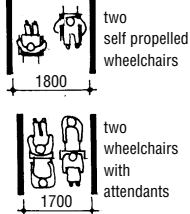
	MEN	WOMEN
high reach	+1715	+1575
oblique reach	+1595	+1465
forward reach	+1410	+1295
head height	+1330	+1255
eye level	+1220	+1155
shoulder	+1035	+0990
elbow	+0690	+0690
thigh	+0605	+0605
seat	+0485	+0475
knuckle	+0380	+0420
foot height	+0145	+0165
floor	±0000	±0000



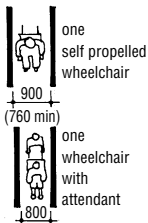
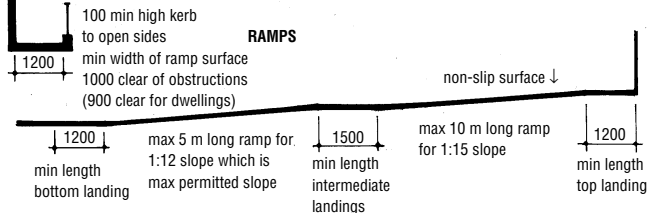
Turning circle ∅ mm

large chair	1700
standard chair	1500
indoor chair	1400

Circulation



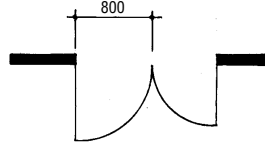
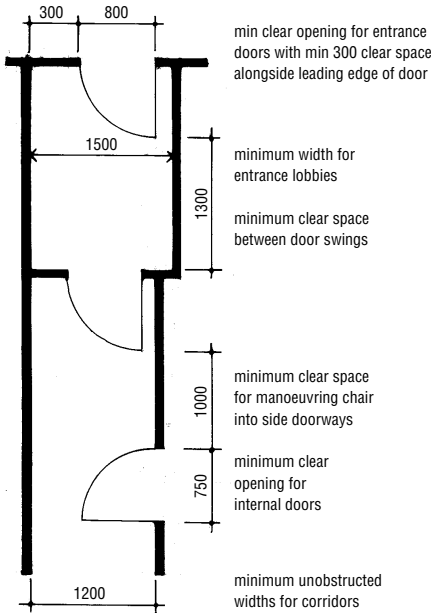
LIFT suitable for a wheelchair user
 Car of at least 1100 wide × 1400 long internally
 Clear landing area of 1500 × 1500
 Clear door opening of 800
 Lift controls set between +900 and +1200 h
 and set at least 300 mm in from front wall inside car



NB Minimum dimensions of landings to be clear of door swings

Wheelchair access

Entrance lobbies & corridors – not in dwellings

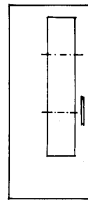


Double doors to have at least one leaf with 800 mm clear opening

NB:

Minimum clear opening for doorways means clear of door thickness, doorstops and any full length pull handle.

In practice this requires a 1000 mm doorset to achieve a minimum 800 clear opening.



Principal entrance doors, doors in frequent use and doors across circulation routes should have glazed panels at least between heights of +0900 and +1500 but preferably with the u/s at +0450.

Means of Escape

See Approved Document B of the Building Regulations and BS 5588 : Part 8 : 1988

Audience & Spectator Seating

Six wheelchair spaces or 1/100th of spectator seating whichever is greater should be provided.

Each space to be 1400 x 900 with unobstructed view and adjacent to seated companions. The space may be created by readily removing seats for the occasion.

DWELLINGS

NOTE; Part M of the Building Regulations applies only to NEW DWELLINGS, not to existing dwellings nor extensions to existing dwellings.

ENTRANCE DOORS to have min clear opening 775 mm
DOORWAYS in relation to CORRIDORS as table below:

Doorway – clear opening mm	Corridor – minimum width mm
750 or wider	900 when approach head-on
750	1200 when approach not head-on
775	1050 when approach not head-on
800	900 when approach not head-on

A WC must be provided in the entrance storey of a dwelling – or the principal storey if there are no habitable rooms at the entrance level.

This WC compartment must be min. 900 wide with an opening-out door and a clear space 750 deep in front of the pan clear of any wash basin. This WC may be part of a bathroom.

NOTE

No frameless glass doors. No revolving doors unless very large as in airports. Door pulls and lever handles for easy opening. Any door closers to be adjusted to open with minimum force and close slowly.

ACCESS to dwellings not steeper than 1:20 or ramps as shown on opposite page with dropped kerbs to any pavements.

ELECTRICAL SWITCHES & SOCKETS

Height of switches, socket outlets, bell pushes, telephone jacks, TV aerial sockets etc to be positioned between +0450 and +1200 above FFL.

Sources:

Approved Document M of the Building Regulations
Metric Handbook
Designing for Accessibility