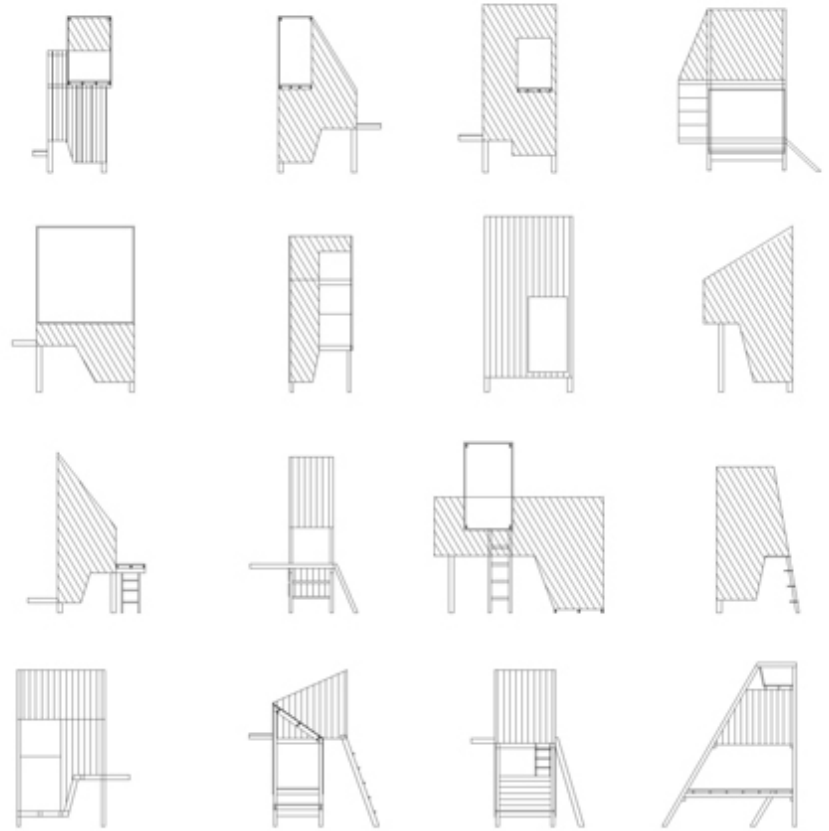


OCCUPATION

architecture as form and function
small structures
precedents



<https://www.dezeen.com/2009/07/13/xs-architecture-vs-xl-furniture-by-worapong-manupipatpong/>





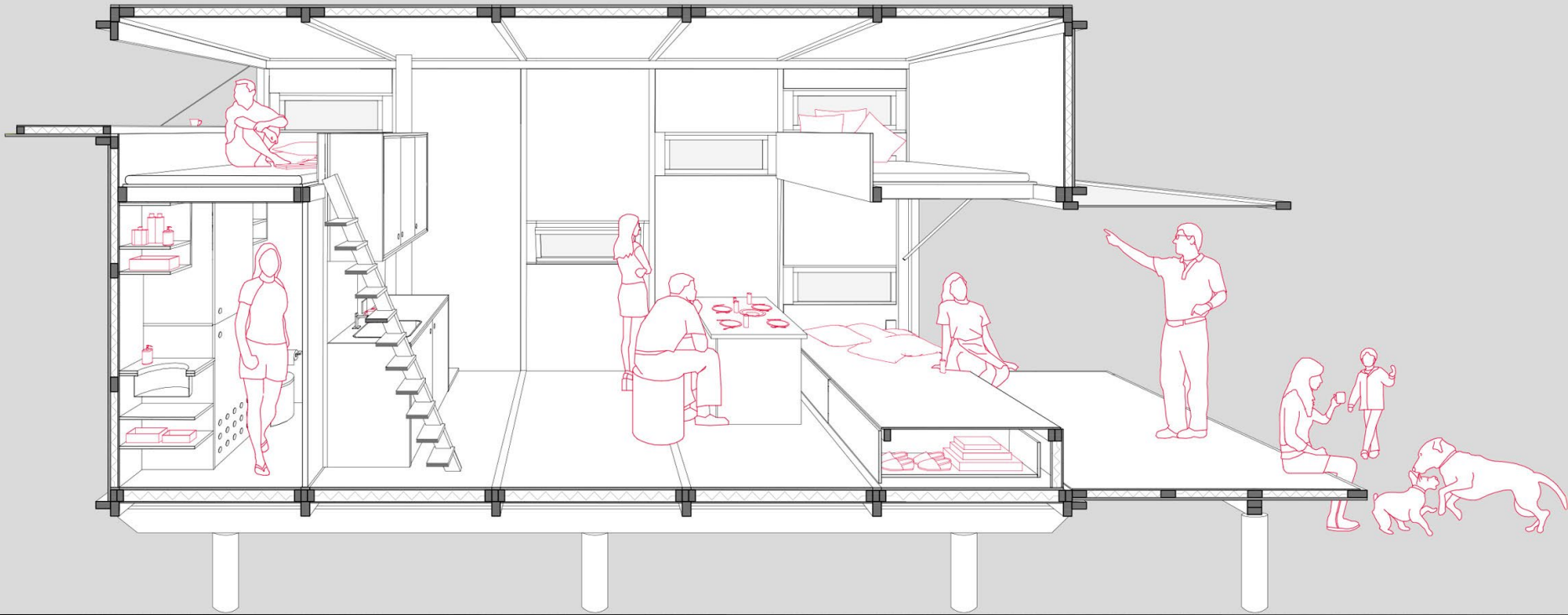
The 18-square-metre building was fabricated at a factory around 300 kilometres from the site and transported on the back of a flatbed lorry to its current plot, where it is nestled among mustard plants.

A laminated-timber framework wrapped in stone-wool insulation and sheets of weatherproofed birch plywood contains a simple interior comprising a kitchen and lounge area overlooked by elevated beds.



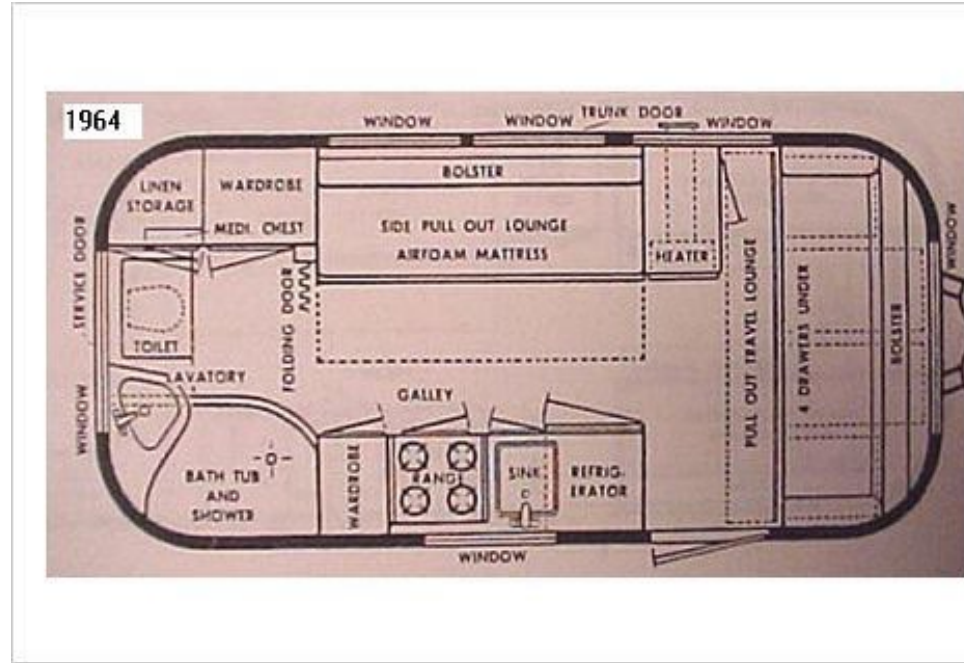


<https://www.dezeen.com/2018/05/21/so-architecture-cabin-border-turkey-greece/>





<https://i.pinimg.com/originals/00/bb/5a/00bb5a199bac93586261137ad349a592.jpg>



<http://www.viewrvs.com/travel-trailer/airstream/tt/floorplans.php>

1964 Airsteam Trailer

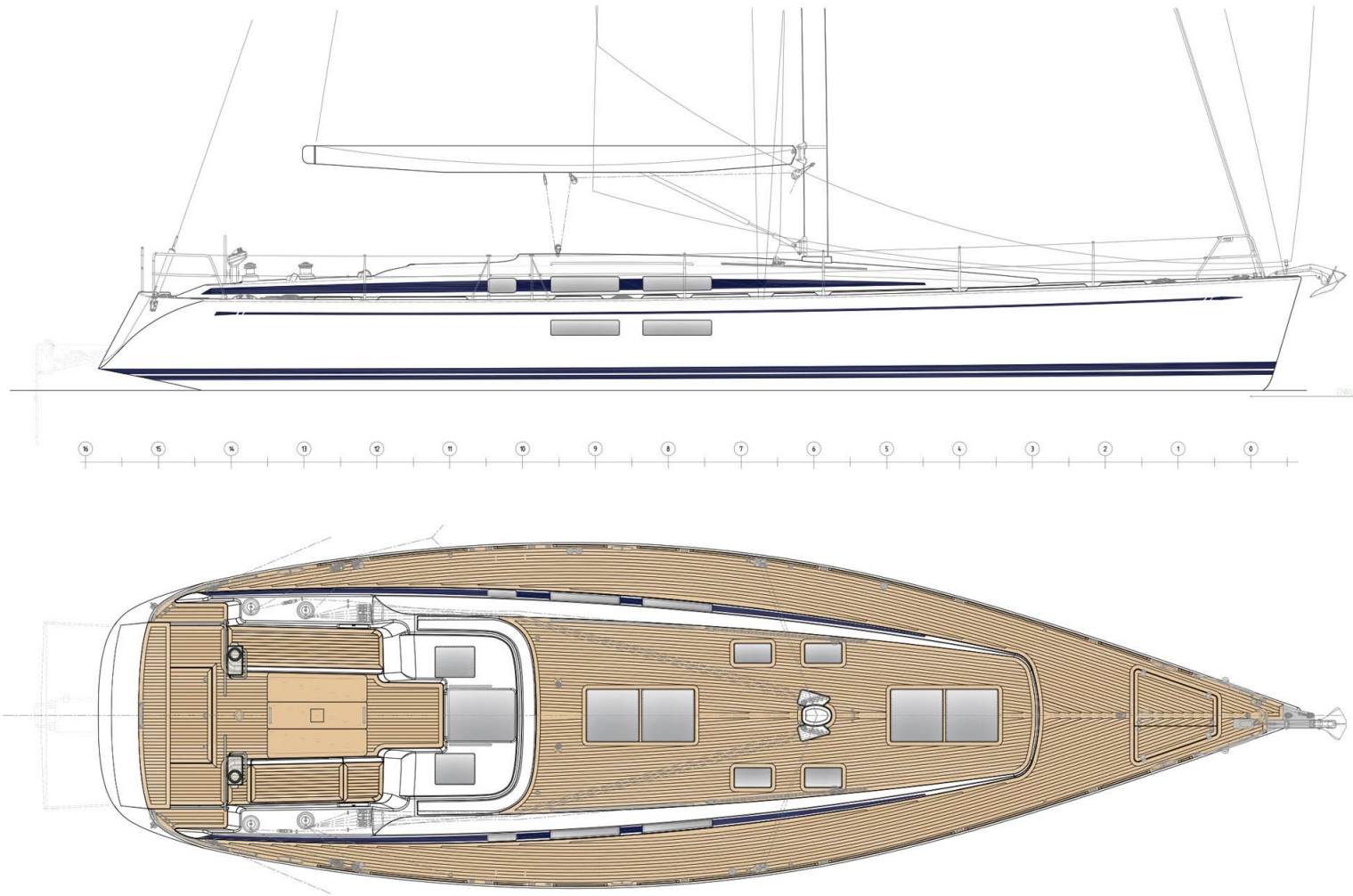


A small but surprisingly easy to live in accommodation plan. And, oh, that old time Hinckley craftsmanship

Some Thoughts On Smaller Older Cruising Boats

January 25, 2021September 2, 2019 by [John Harries](#)

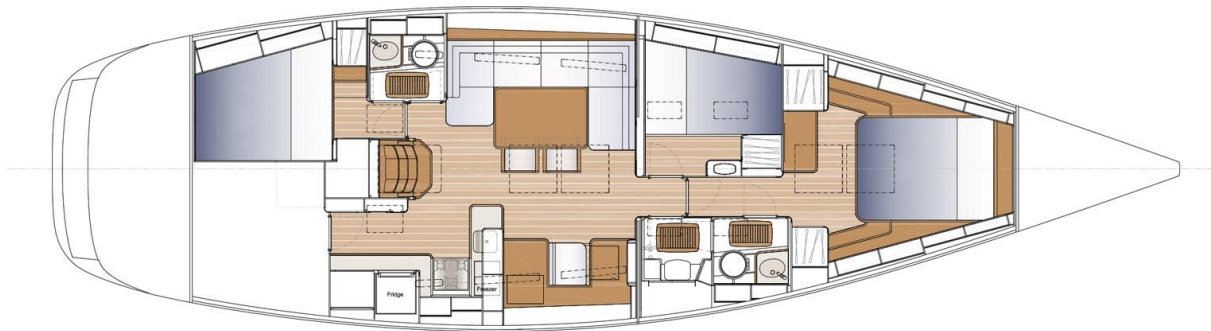
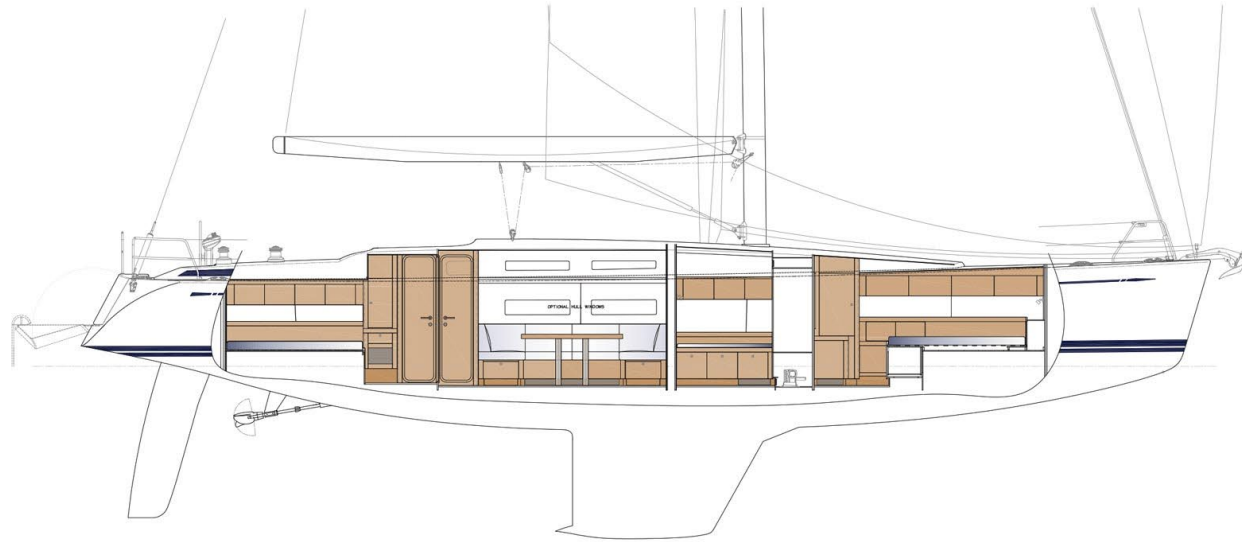
<https://www.morganscloud.com/2019/09/02/some-thoughts-on-smaller-older-cruising-boats/>



Elevation and deck Plan of Swan 54

<https://www.nautorswan.com/yachts/models/swan54/#interior>

<https://www.nautorswan.com/w1/wp-content/uploads/2019/09/swan54-deck-01.jpg>



Section and Interior Plan of Swan 54

<https://www.nautorswan.com/yachts/models/swan54/#interior>

<https://www.nautorswan.com/yachts/models/swan54/#gallery1-3>



Street View | Photographer Unknown

<https://archeyes.com/nakagin-capsule-tower-kisho-kurokawa/>

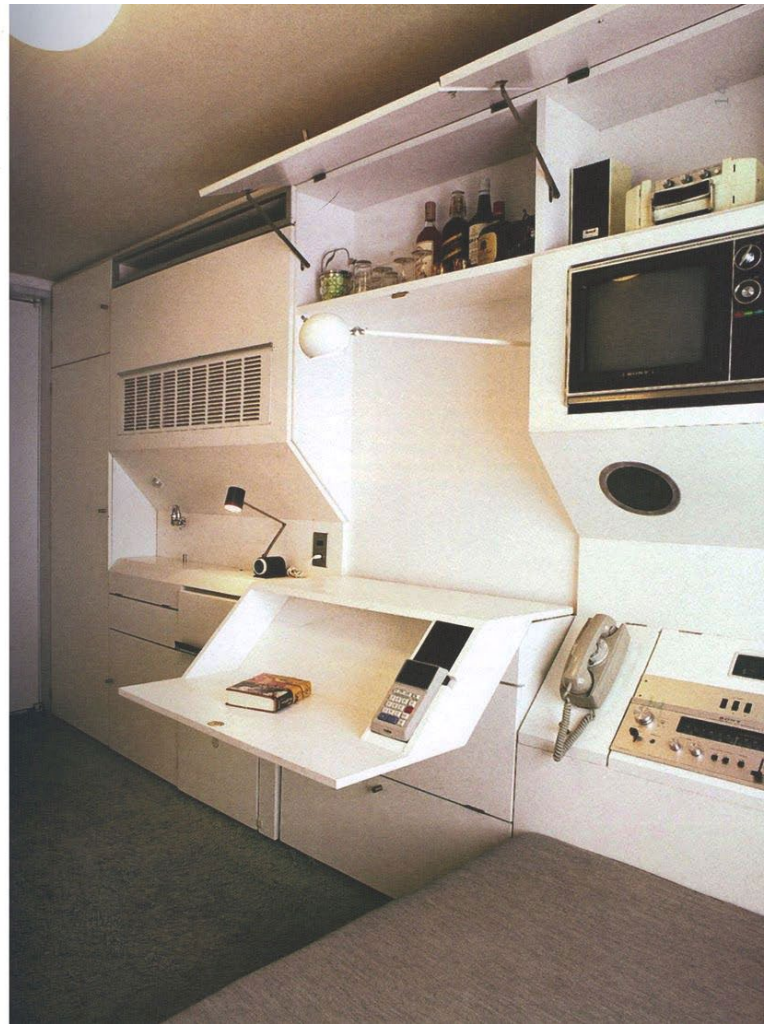
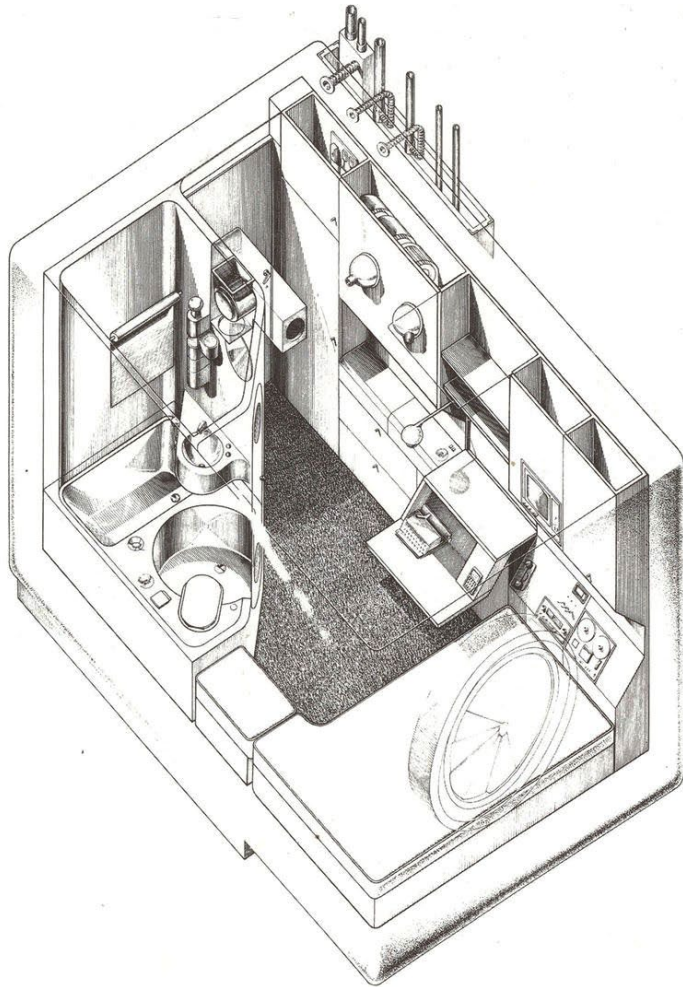


Nakagin Capsule Tower Detail



© Noritaka Minami

<https://archeyes.com/nakagin-capsule-tower-kisho-kurokawa/>
<https://archeyes.com/nakagin-capsule-tower-kisho-kurokawa/#jp-carousel-13784>



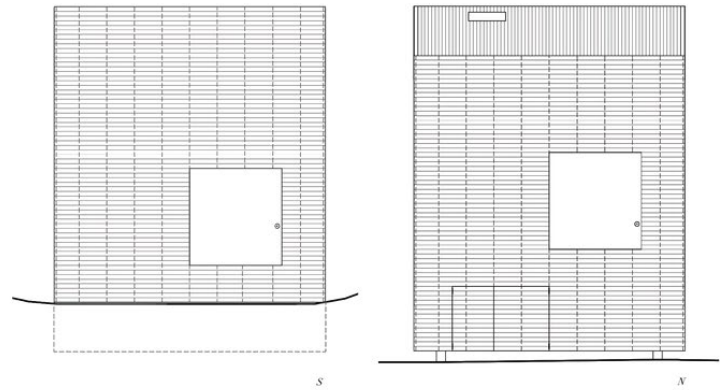
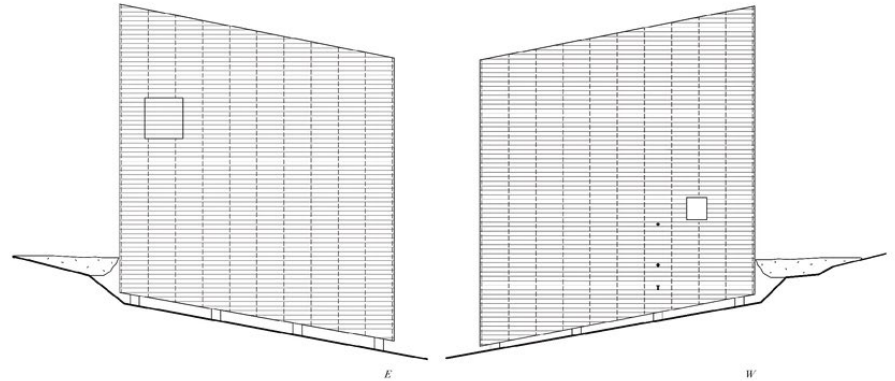
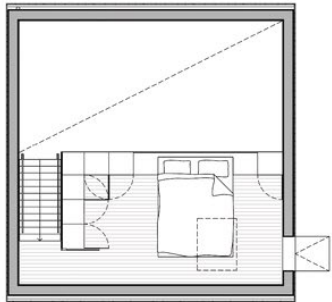
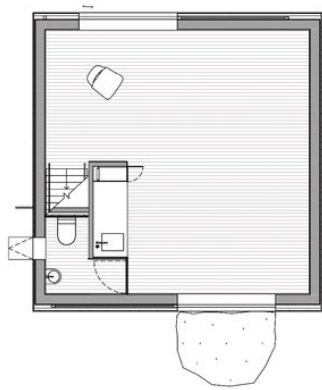
Cite this article: "Nakagin Capsule Tower in Tokyo / Kisho Kurokawa" in *ArchEyes*, August 3, 2021,
<https://archeyes.com/nakagin-capsule-tower-kisho-kurokawa/>
<https://archeyes.com/nakagin-capsule-tower-kisho-kurokawa/#jp-carousel-13784>



http://htlnz.wpengine.com/wp-content/uploads/2015/01/HE0414_H_KAIPARA_016.jpg

These little buildings, with their air of thoughtful austerity, are among the few contemporary structures that can boast a genuine lineage to New Zealand’s bach heritage. There is something profound about their modesty. They are proud to display the beauty that lies in subtraction, and how liveable small spaces can be. They show how designing something elegant needn’t cost a fortune. They show how a small view of a quiet landscape can be as uplifting and alluring as a larger, more glamorous vista. They are tiny, but they possess a sense of enormous calm.

<https://www.homestolove.co.nz/real-homes/home-of-the-year/2014-home-of-the-year-cheshire-architects>



1:100 0 1 2 5 M

Eyrie Houses / Cheshire Architects

<https://www.archdaily.com/774230/eyrie-houses-cheshire-architects>



<https://www.dezeen.com/2012/05/08/house-na-by-sou-fujimoto-architects/>



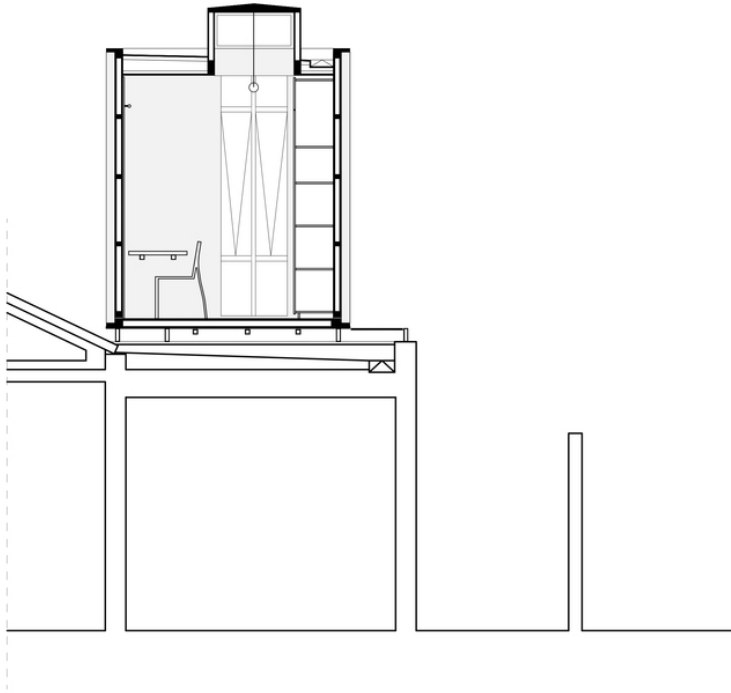
[07.jpg \(667x1000\) \(adsttc.com\)](#)



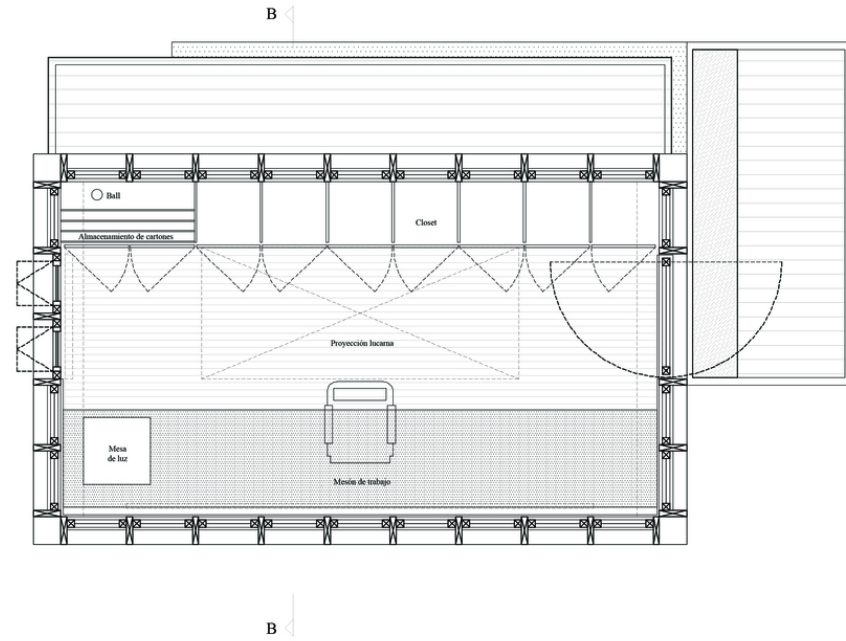
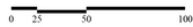
[PORTADA_11.jpg \(1498x1000\) \(adsttc.com\)](#)

Workshop in the City / Romero Silva Arquitectos

[Workshop in the City / Romero Silva Arquitectos | ArchDaily](#)

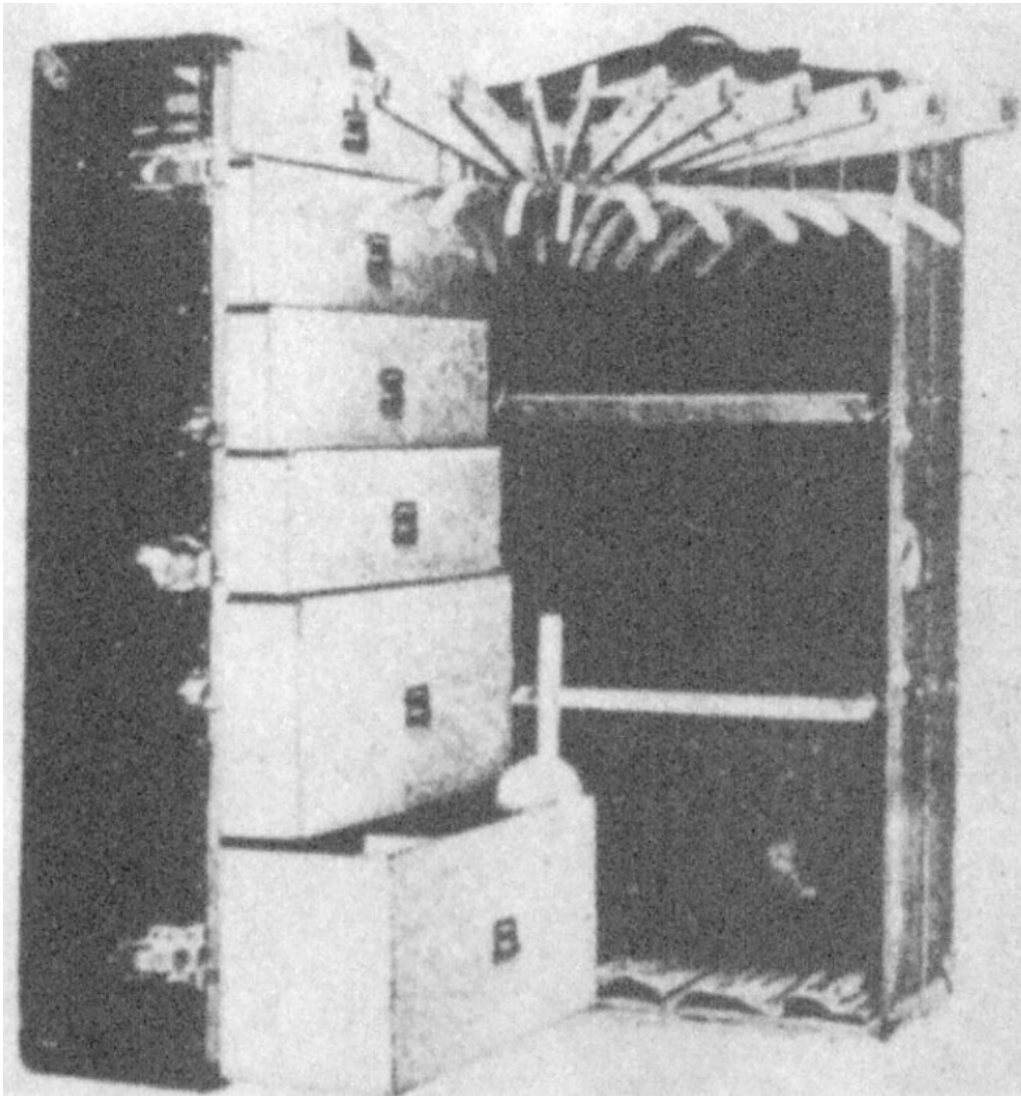


CORTE BB



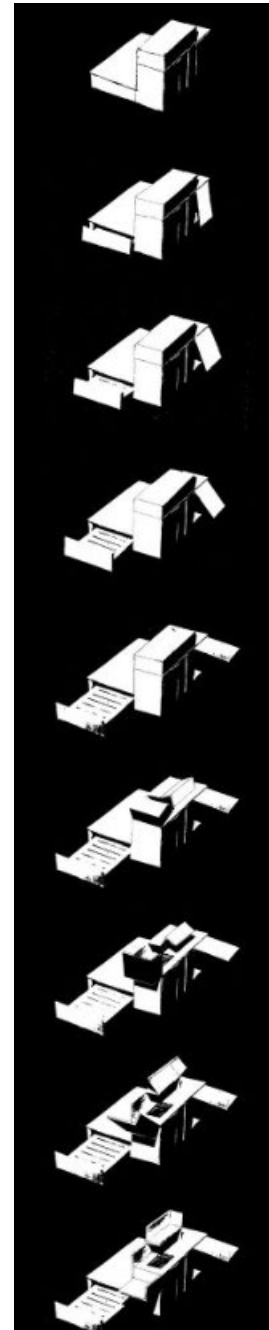
Planta

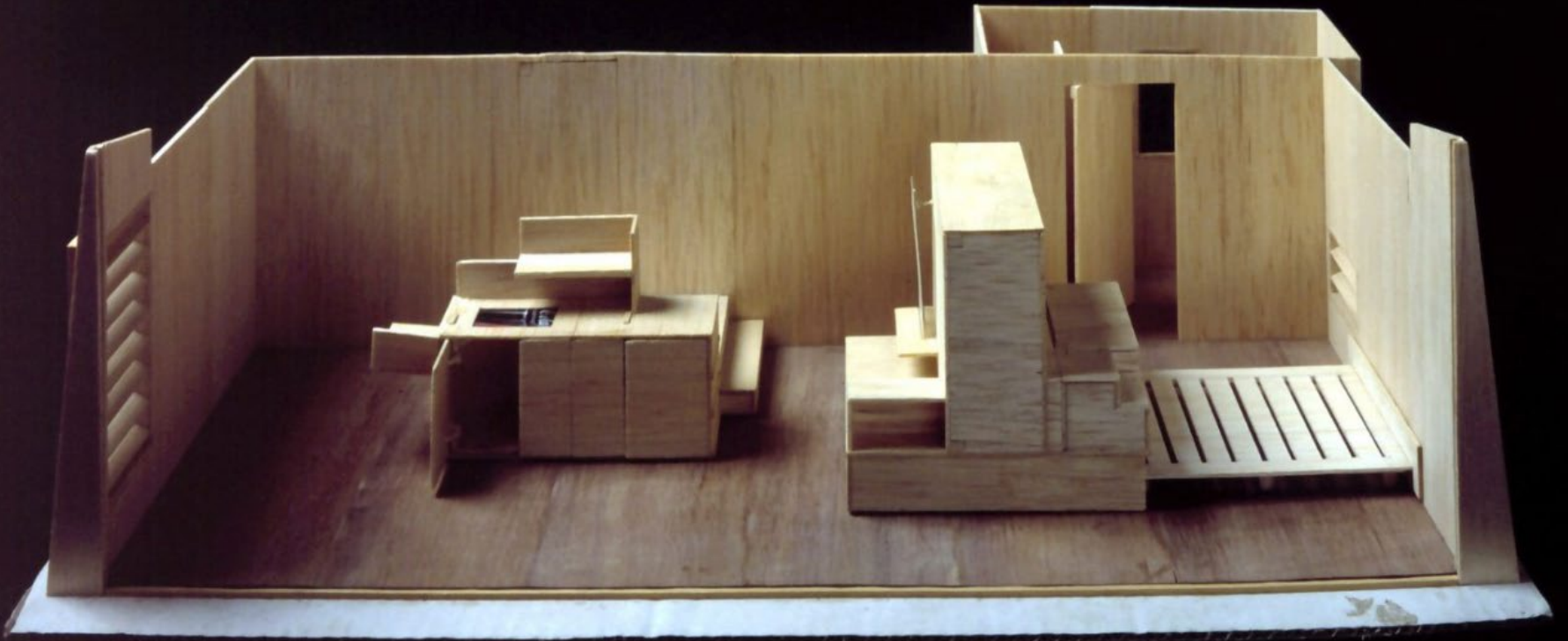




House in a suitcase – Flores and Prats

<https://floresprats.com/archive/casa-en-una-maleta/>





House in a suitcase – Flores and Prats

<https://floresprats.com/archive/casa-en-una-maleta/>



House in a suitcase – Flores and Prats

<https://floresprats.com/archive/casa-en-una-maleta/>



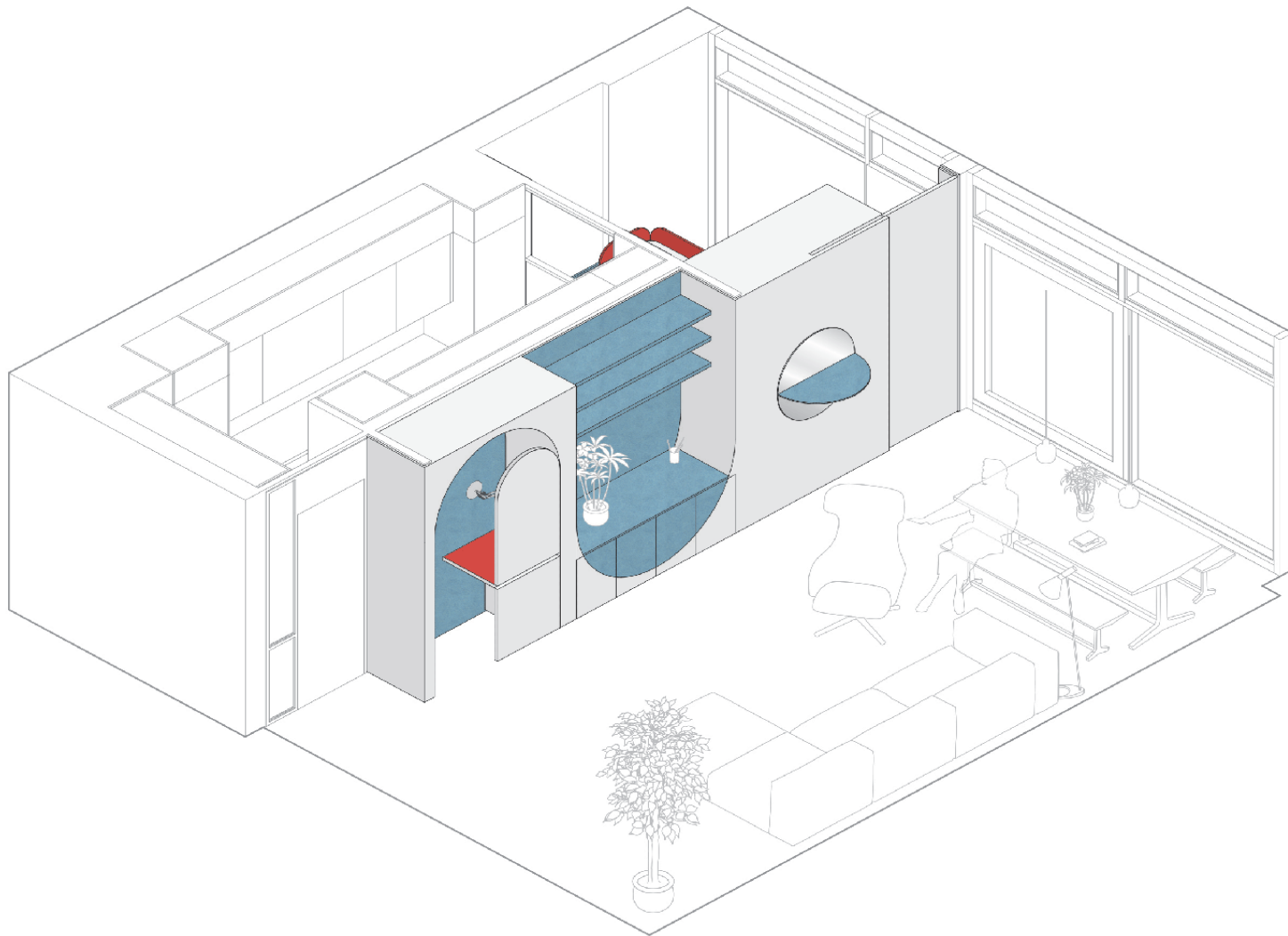
House in a suitcase – Flores and Prats

<https://floresprats.com/archive/casa-en-una-maleta/>



Architect Ben Allen explains that “key features such as the desk, bed, and seat are picked out with subdued primary colors.”
Photography by [French + Tye](#)

<https://www.architecturaldigest.com/story/flexible-furniture-makes-room-for-one-more-in-this-london-landmark>



The unit acts as storage and as a wall partition, with a sliding door that is the only element that directly touches the Grade II Listed building's exterior.

<https://www.architecturaldigest.com/story/flexible-furniture-makes-room-for-one-more-in-this-london-landmark>

**Fogo Island
Newfoundland
Canada**

**wooden cabin-like
artists' studios**

Saunders Architects

Slice is a 15m² small garden house located in Slåttevik, Haugesund in Norway. The inside space is 15m² including a bed, kitchen and small bathroom. We added the outside patio to double the space of the small project. We formed it in a way that the inside, outside and courtyard walls to all looked like one piece.

<https://www.saunders.no/slice>

photographs by [Bent René Synnevåg](#))



**Fogo Island
Newfoundland
Canada**

**Tower
47sqm**

Saunders Architects

The Tower Studio is dramatically situated on a stretch of rocky coastline in Shoal Bay, Fogo Island, Newfoundland. The studio's sculptural silhouette leans both forward and backward as it twists upward.

<https://www.archdaily.com/229353/tower-studio-saunders-architecture>

photographs by [Bent René Synnevåg](#))



**Fogo Island
Newfoundland
Canada**

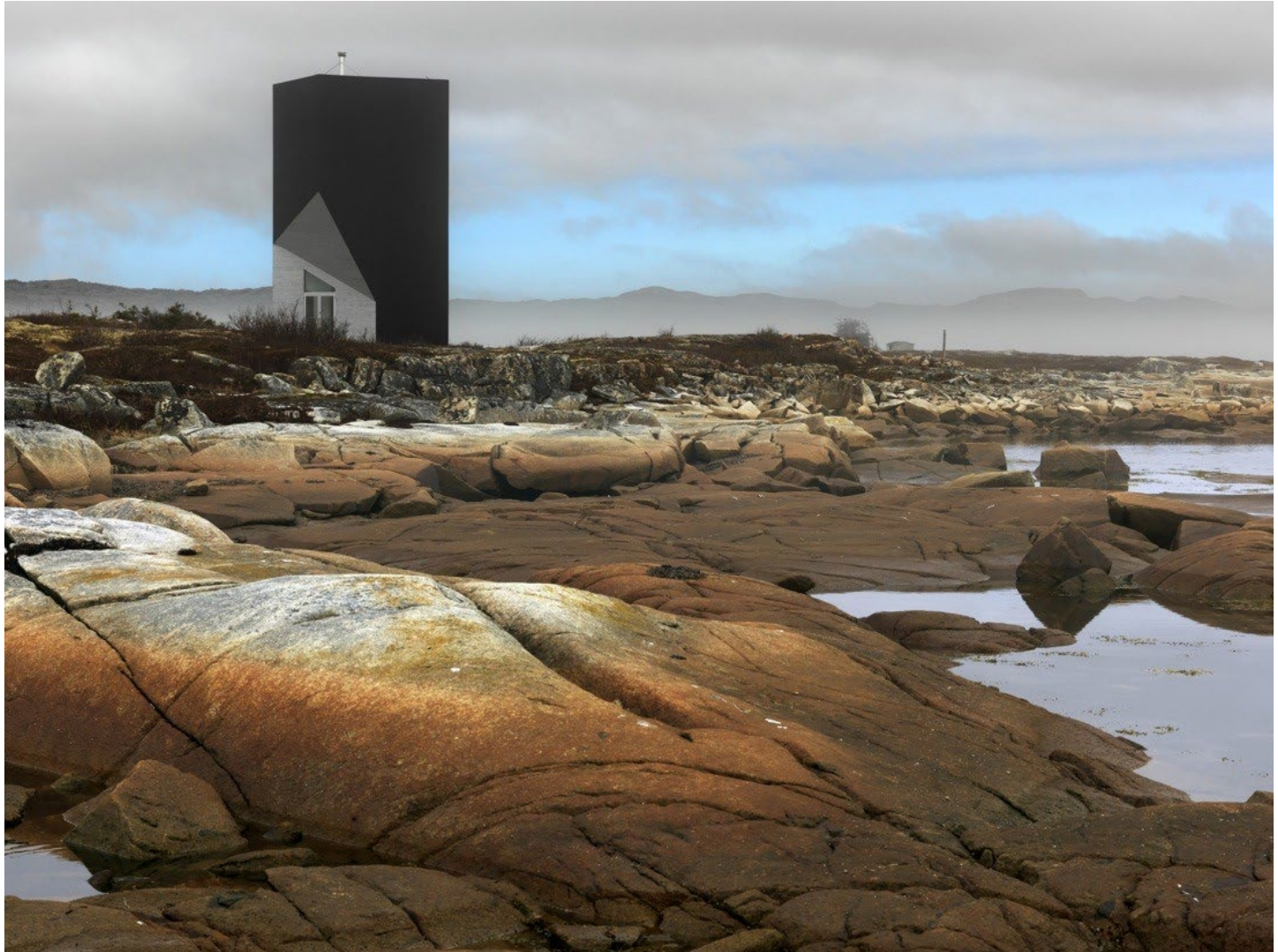
**Tower
47sqm**

Saunders Architects

The Tower Studio is dramatically situated on a stretch of rocky coastline in Shoal Bay, Fogo Island, Newfoundland. The studio's sculptural silhouette leans both forward and backward as it twists upward.

<https://www.archdaily.com/229353/tower-studio-saunders-architecture>

photographs by [Bent René Synnevåg](#))



**Fogo Island
Newfoundland
Canada**

**Tower
47sqm**

Saunders Architects

The Tower Studio is dramatically situated on a stretch of rocky coastline in Shoal Bay, Fogo Island, Newfoundland. The studio's sculptural silhouette leans both forward and backward as it twists upward.



<https://www.archdaily.com/229353/tower-studio-saunders-architecture>

photographs by [Bent René Synnevåg](#))



Seelenkiste - Spirit Shelter Finding Arcadie / allergutendinge

Image by **allergutendinge**

https://www.archdaily.com/627266/seelenkiste-spirit-shelter-finding-arcadie-allergutendinge?ad_medium=gallery



Seelenkiste - Spirit Shelter Finding Arcadie / allergutendinge
Image by **allergutendinge**

https://www.archdaily.com/627266/seelenkiste-spirit-shelter-finding-arcadie-allergutendinge?ad_medium=gallery

Lucky Drops / Atelier Tekuto

Atelier Tekuto named this house 'Lucky Drops', the equivalent to Japanese old saying the best for last'. Every effort is being made to materialize this saying to turn this leftover plot of land into a place of living comfort.

Image by Makoto Yoshida

<https://www.archdaily.com/142878/lucky-drops-atelier-tekuto>





Threshold

Lucky Drops / Atelier Tekuto

Image by Makoto Yoshida

<https://www.archdaily.com/142878/lucky-drops-atelier-tekuto>



Kudhva Wilderness Cabins / New British Design **Image by Roy Riley**

The cabins, design by Ben Huggins are intended to be the first phase of a wider masterplan for the site offering the public the chance to experience temporary small scale experimental architecture.

https://www.archdaily.com/914484/kudhva-wilderness-cabins-new-british-design?ad_medium=gallery



Kudhva Wilderness Cabins / New British Design Image by George Fielding

The cabins, design by Ben Huggins are intended to be the first phase of a wider masterplan for the site offering the public the chance to experience temporary small scale experimental architecture.

https://www.archdaily.com/914484/kudhva-wilderness-cabins-new-british-design?ad_medium=gallery

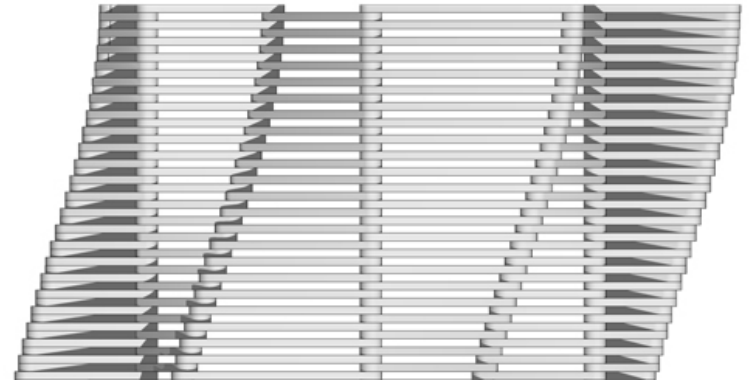
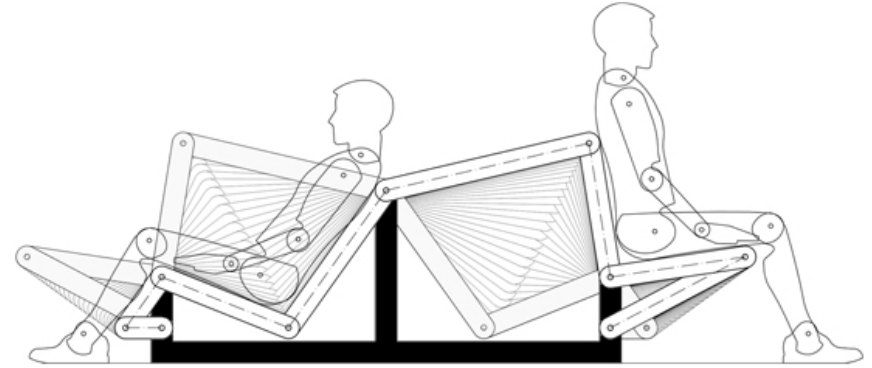
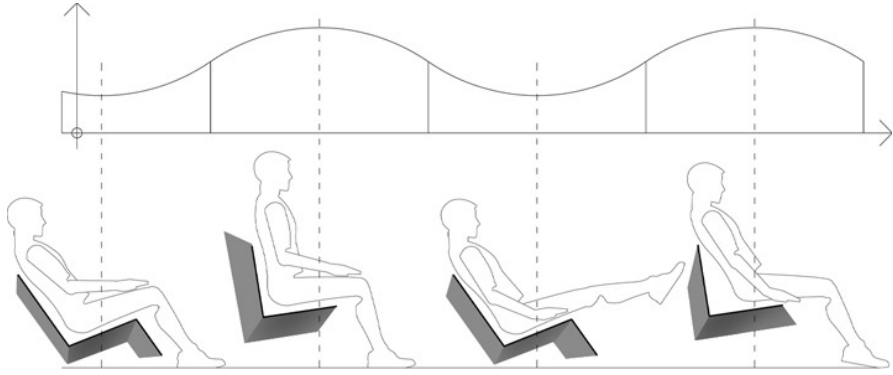


Kudhva Wilderness Cabins / New British Design Image by George Fielding

The cabins, design by Ben Huggins are intended to be the first phase of a wider masterplan for the site offering the public the chance to experience temporary small scale experimental architecture.

https://www.archdaily.com/914484/kudhva-wilderness-cabins-new-british-design?ad_medium=gallery





https://www.archdaily.com/948377/how-small-can-a-home-be-a-glimpse-into-the-smallest-houses-in-the-world?ad_medium=gallery