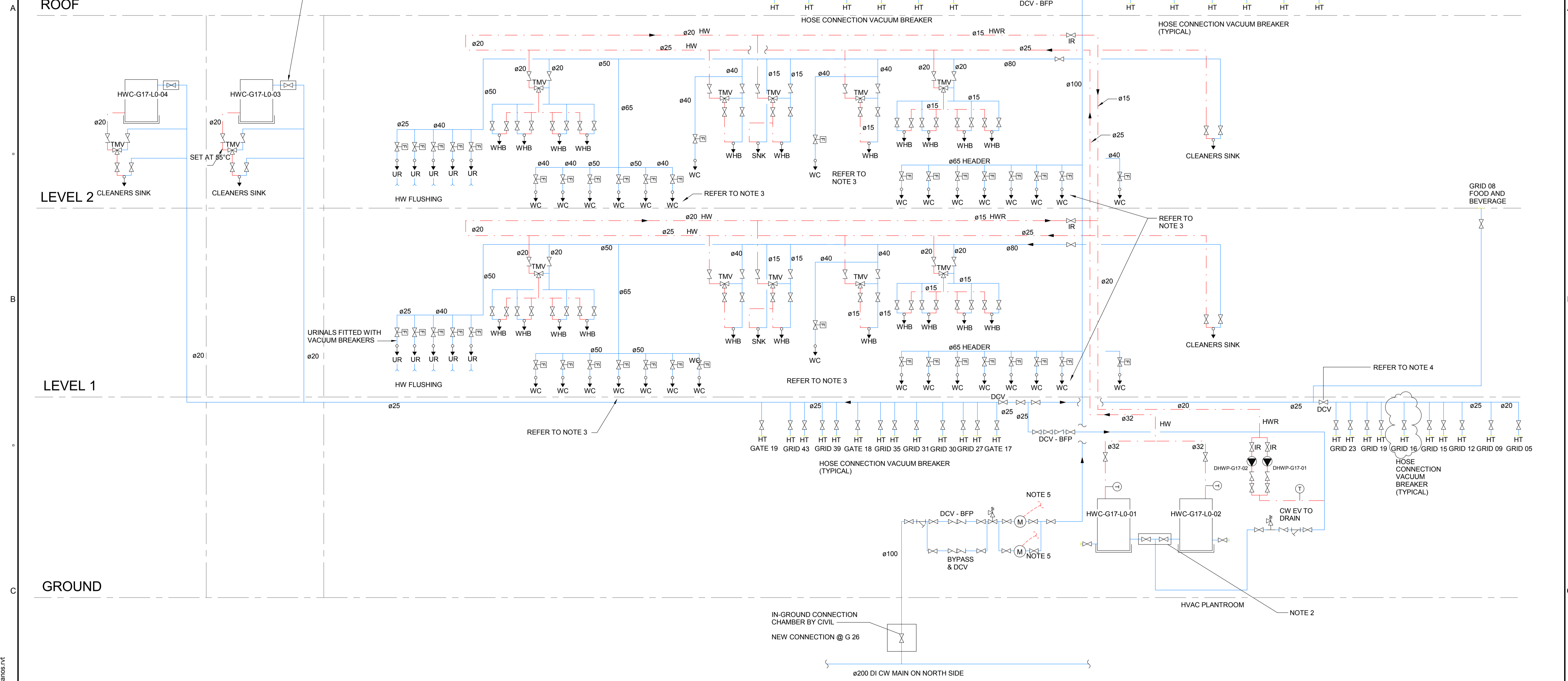


- NOTES:**
- REFER TO DETAIL 9 ON HY-7201 FOR WALL MOUNTED HWC DETAIL.
 - REFER TO DETAIL 8 ON HY-7201 HWC DETAIL.
 - WC FLUSHING VALVES WITH VACUUM AIR BREAK
 - ALL BACKFLOW PREVENTION DEVICES ARE TESTABLE
 - HIGH FLOW AND LOW FLOW WATER METERS ARE DIGITAL PULSE METERS. PROVIDE SIGNAL TO BMS. REFER TO BMS SECTION UNDER MECHANICAL SPECIFICATION.



FOR CONSTRUCTION

This drawing is confidential and shall only be used for the purpose of this project. The signing of this title block confirms the design and drafting of this project have been prepared and checked in accordance with the AECOM quality assurance system to ISO 9001-2000.

AECOM
 CONSULTANT
 AECOM New Zealand Limited
 AECOM House, 8 Mahuhu Crescent
 Auckland 1010, Auckland, NZ 1010
 +64 9 967 9200 tel +64 9 967 9201 fax
 www.aecom.com

WARREN AND MAHONEY
 CONSULTANT
 Ground Floor, Mason Bros
 139 Pakenham Street West
 Wynyard Quarter
 Auckland 1010
 New Zealand
 Phone + 64 9 309 4894

PROJECT
 AUCKLAND AIRPORT - PIER B

CLIENT
 Auckland Airport

SCALE
 NOT TO SCALE

PROJECT MANAGEMENT INITIALS

JP	NP	RW
DESIGNER	CHECKED	APPROVED

ISSUE/REVISION

I/R	DATE	DESCRIPTION
02	13/03/2017	FOR CONSTRUCTION
01	17/02/2017	GATE 19 BC ISSUE
0	23/12/2016	FOR CONSTRUCTION

PROJECT NUMBER
 91345
SHEET TITLE
 HYDRAULIC SERVICES
 HOT AND COLD WATER
 SCHEMATIC
SHEET NUMBER
 91345-ACM-DRG-HY-0027