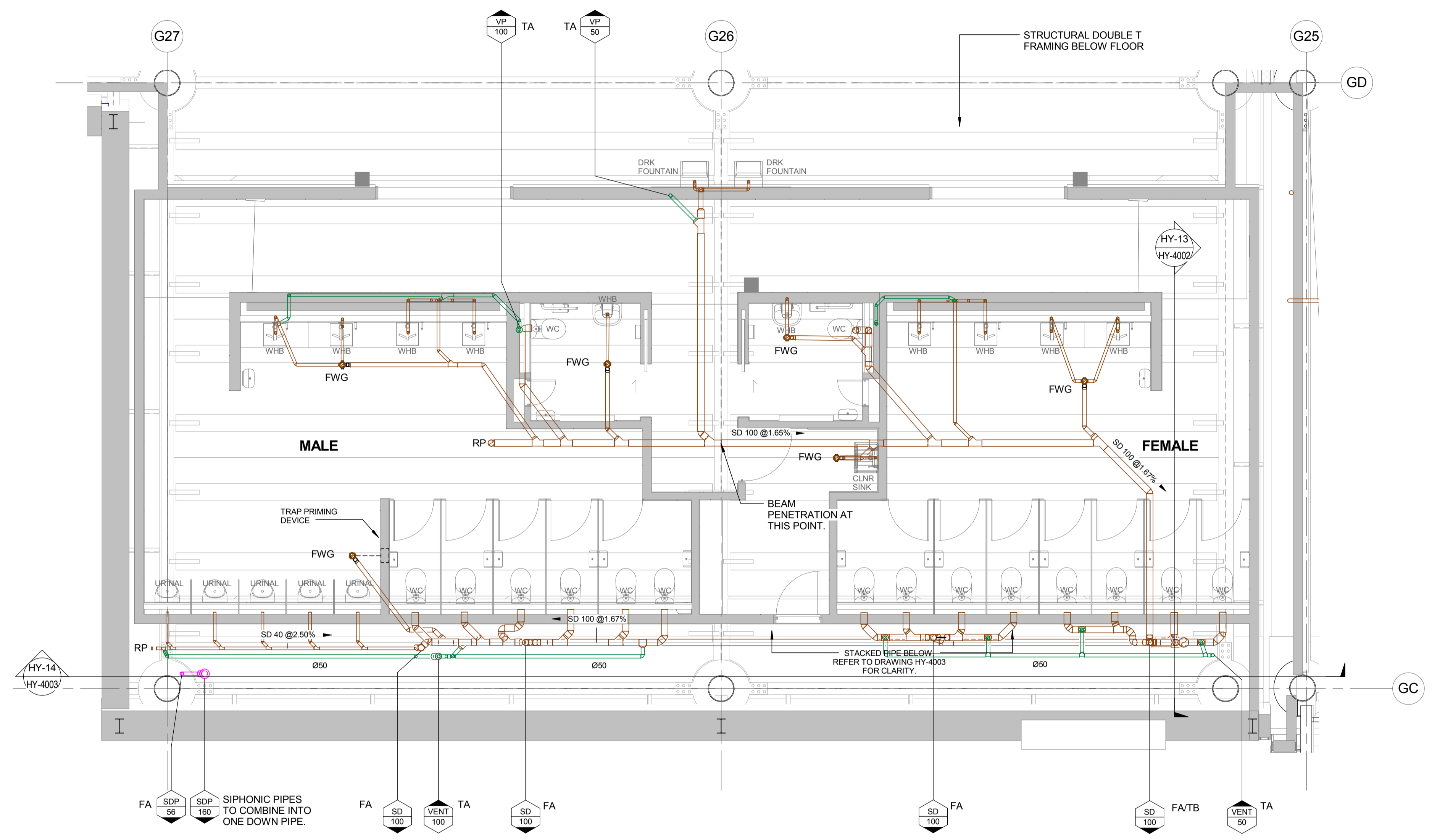
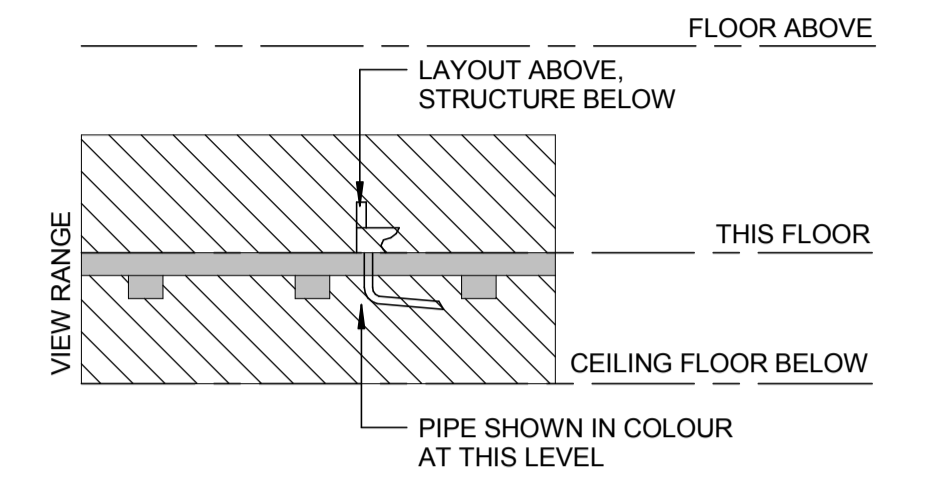


**FIXTURE BRANCH CONNECTION**

- WC 100mm CONNECTION
- WHB 40mm CONNECTION
- FWG 50mm CONNECTION

**VIEW RANGE KEY - LOW LEVEL**



**FOR CONSTRUCTION**

This drawing is confidential and shall only be used for the purpose of this project. The signing of this title block confirms the design and drafting of this project have been prepared and checked in accordance with the AECOM quality assurance system to ISO 9001-2000.



**CONSULTANT**  
 AECOM New Zealand Limited  
 AECOM House, 8 Mahuhu Crescent  
 Auckland 1010, Auckland, NZ 1010  
 +64 9 967 9200 tel +64 9 967 9201 fax  
 www.aecom.com

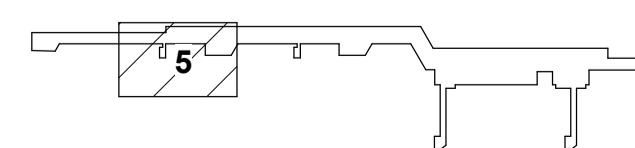


**CONSULTANT**  
 201 Victoria Street West  
 PO Box 91517  
 Auckland 1142  
 New Zealand  
 Phone + 64 9 309 4894

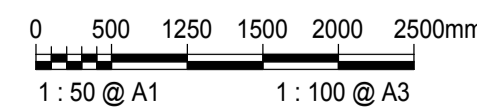
**PROJECT**  
 AUCKLAND  
 AIRPORT - PIER B



**KEY PLAN**



**SCALE**



**PROJECT MANAGEMENT INITIALS**

JP	NP	RW
DESIGNER	CHECKED	APPROVED

**ISSUE/REVISION**

I/R	DATE	DESCRIPTION
0	23/12/2016	FOR CONSTRUCTION

**PROJECT NUMBER**

91345

**SHEET TITLE**

HYDRAULIC SERVICES  
 LEVEL 1 ARRIVALS TOILETS  
 SANITARY LAYOUT

**SHEET NUMBER**

91345-ACM-DRG-HY-3101