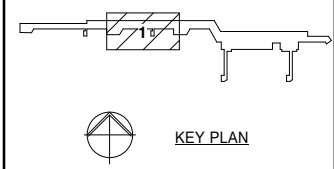


| Issue | Amendments | Date | Sign: |
|-------|---------------------|---------|-------|
| A | ISSUED FOR APPROVAL | 26-1-17 | JJT |



- GENERAL NOTES:
- LEVEL 0 = RL 7650
 - LEVEL 1 = RL 11250
 - LEVEL 2 = RL 15450
 - ROOF LEVEL 1 = RL 23800
 - BL'S TO DUCTS AND PIPES ARE GIVEN FROM STRUCTURAL LEVEL
 - CEILING ACCESS PANEL FOR DAMPERS SHOWN THUS
 - ALL CEILING HEIGHTS SHOWN THUS: (2700)

- DUCT LEGEND:
- E - EXHAUST AIR
 - R - RETURN AIR
 - S - SUPPLY AIR
 - OA - OUT DOOR AIR
- PLAIN GMS
 - GMS c/w 25MM INT. INSULATION
 - GMS c/w 50MM INT. INSULATION
 - GMS c/w 25MM EXT. INSULATION
 - GMS c/w 50MM EXT. INSULATION
 - EXTERNAL FIRE PROOFING
 - 10MM INT. THERMO BREAK INSULATION

Status:

| | | |
|---------------------|------------------|-------------------|
| FOR APPROVAL | | |
| Status of Drawing: | Authorised Sign: | Date |
| PRELIMINARY | | |
| FOR APPROVAL | JJT | 26-01-2017 |
| FOR CONSTRUCTION | | |

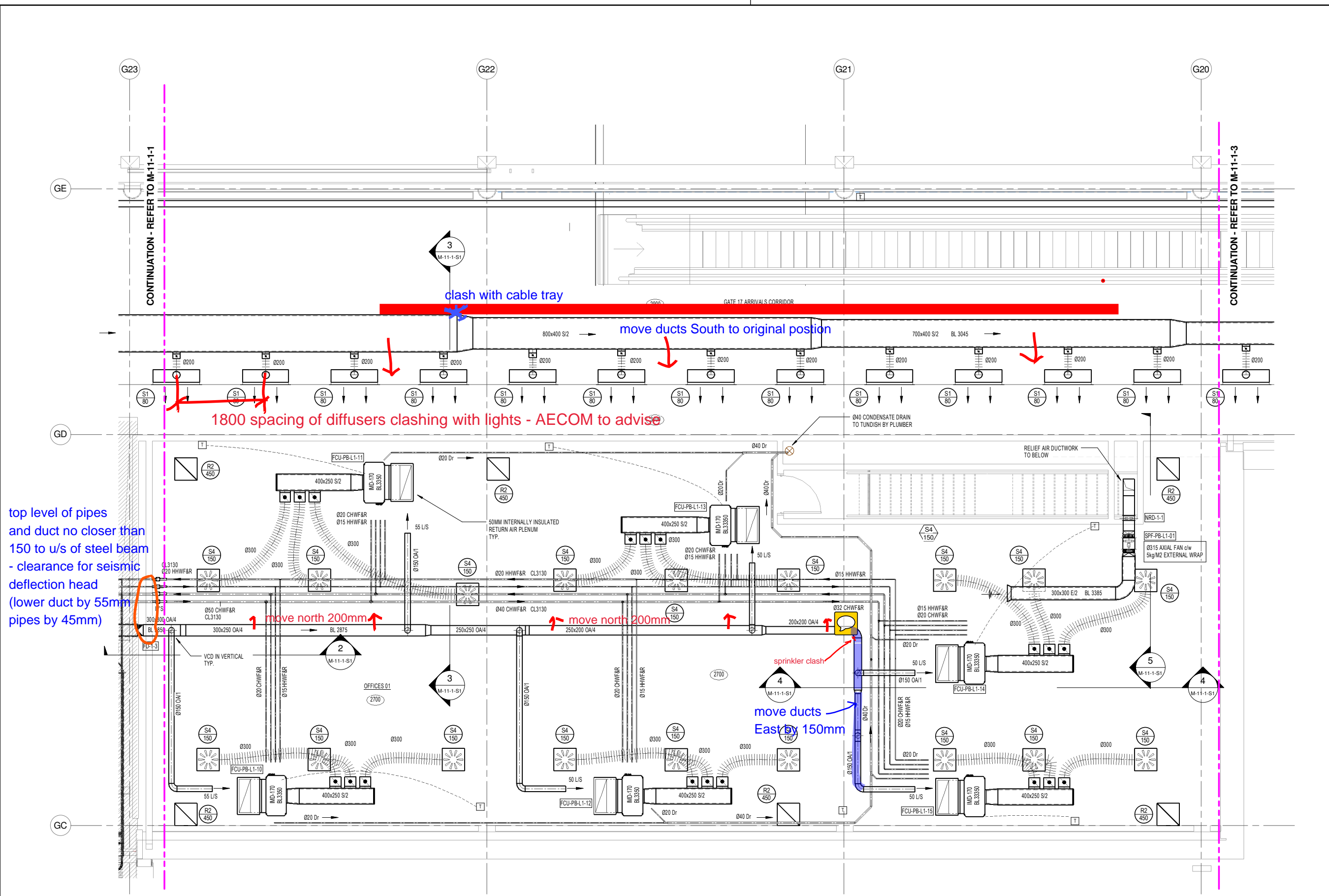
COPYRIGHT
 This document and the copyright in this document remain the property of Economech Services Ltd. The contents of this document may not be reproduced either in whole or in part, by any means whatsoever without the prior written consent of Economech Services Ltd.



PROJECT TITLE:
AUCKLAND AIRPORT - PIER B EXTENSION

SHEET TITLE:
MECHANICAL SERVICES LEVEL 1 HVAC LAYOUT - ZONE 1 SHEET 2

| | | | |
|-------------|---------------|--------------|-------|
| Drawn: | LML | Cad File: | 2294 |
| Date: | DEC '16 | Scale at A1: | 1:50 |
| | | at A3: | 1:100 |
| Drawing No: | 2294-M-11-1-2 | Rev: | A |



top level of pipes and duct no closer than 150 to u/s of steel beam - clearance for seismic deflection head (lower duct by 55mm pipes by 45mm)

2 PART PLAN - LEVEL 1
 1:50