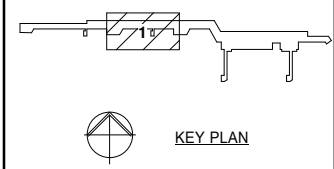


Issue	Amendments	Date	Sign:
A	ISSUED FOR APPROVAL	26-1-17	JJT



- GENERAL NOTES:**
- LEVEL 0 = RL 7650
 - LEVEL 1 = RL 11250
 - LEVEL 2 = RL 15450
 - ROOF LEVEL 1 = RL 23800
 - BL'S TO DUCTS AND PIPES ARE GIVEN FROM STRUCTURAL LEVEL
 - CEILING ACCESS PANEL FOR DAMPERS SHOWN THUS
 - ALL CEILING HEIGHTS SHOWN THUS: (2700)

- DUCT LEGEND:**
- E - EXHAUST AIR
 - R - RETURN AIR
 - S - SUPPLY AIR
 - OA - OUT DOOR AIR
- PLAIN GMS
 - GMS c/w 25MM INT. INSULATION
 - GMS c/w 50MM INT. INSULATION
 - GMS c/w 25MM EXT. INSULATION
 - GMS c/w 50MM EXT. INSULATION
 - EXTERNAL FIRE PROOFING
 - 10MM INT. THERMO BREAK INSULATION

Status:

FOR APPROVAL		
Status of Drawing:	Authorised Sign:	Date
PRELIMINARY		
FOR APPROVAL	JJT	26-01-2017
FOR CONSTRUCTION		

COPYRIGHT
 This document and the copyright in this document remain the property of Economech Services Ltd. The contents of this document may not be reproduced either in whole or in part, by any means whatsoever without the prior written consent of Economech Services Ltd.

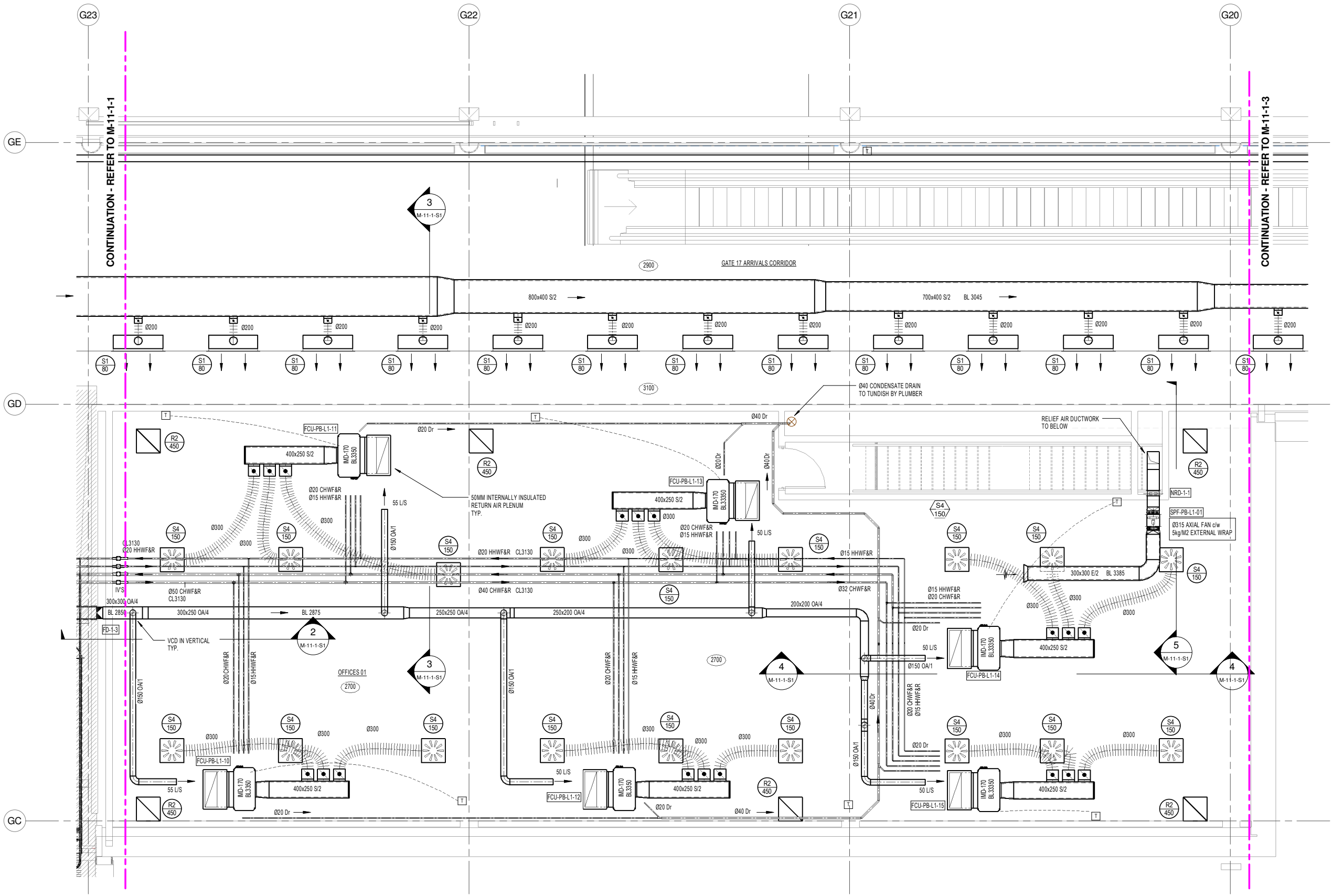


PROJECT TITLE:
AUCKLAND AIRPORT - PIER B EXTENSION

SHEET TITLE:
MECHANICAL SERVICES LEVEL 1 HVAC LAYOUT - ZONE 1 SHEET 2

Drawn:	LML	Cad File:	2294
Date:	DEC '16	Scale at A1:	1:50
		at A3:	1:100
Drawing No:	2294-M-11-1-2	Rev:	A

2 PART PLAN - LEVEL 1
 1:50



CONTINUATION - REFER TO M-11-1-1

CONTINUATION - REFER TO M-11-1-3

GATE 17 ARRIVALS CORRIDOR

RELIEF AIR DUCTWORK TO BELOW

OFFICES 01 (2700)

M-11-1-S1

M-11-1-S1

M-11-1-S1

M-11-1-S1

M-11-1-S1

M-11-1-S1

M-11-1-S1

M-11-1-S1

M-11-1-S1

M-11-1-S1

M-11-1-S1

M-11-1-S1

M-11-1-S1

M-11-1-S1